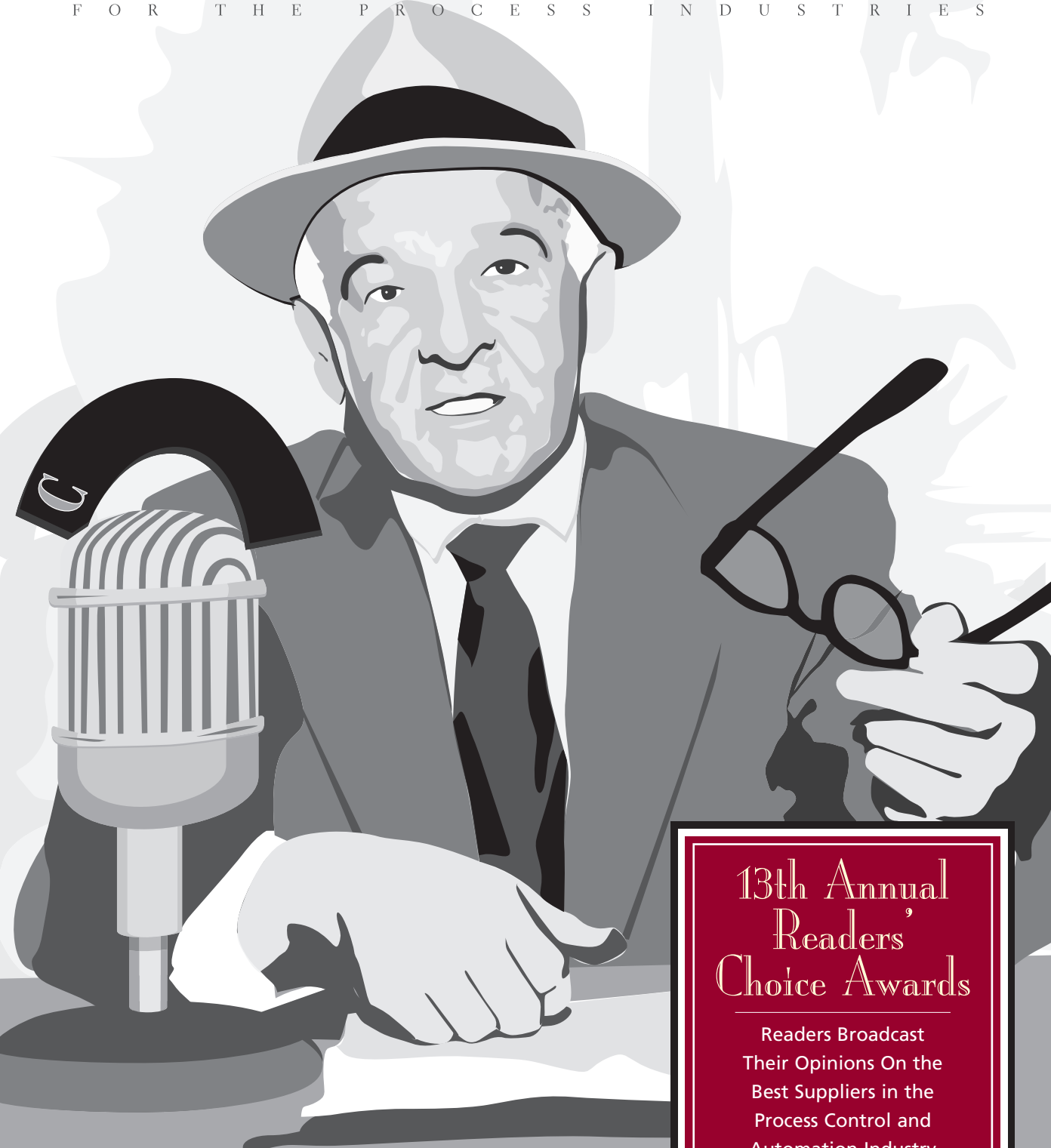


A PUTMAN MEDIA PUBLICATION

WWW.CONTROLGLOBAL.COM

CONTROL

F O R T H E P R O C E S S I N D U S T R I E S



13th Annual Readers' Choice Awards

Readers Broadcast
Their Opinions On the
Best Suppliers in the
Process Control and
Automation Industry



As we have done every year since 1991 we're broadcasting our readers' opinions of process automation and control technologies vendors. Does this thirteenth-annual Readers' Choice Awards reveal any breathtaking new winners or any striking falls from grace? Well, in a word no, but that's a good thing, perhaps reflecting a continuity to the industry in spite of some tough recessionary years and waves of consolidation among the suppliers we all count on to help us get the job done. As you scan the categories you'll encounter some familiar names, many who appear also in The CONTROL Top 50 list (p26, Dec. '04).

Steve Kuehn,
Managing Editor

What our readers' opinions do reveal is that year-after-year, certain companies have, through good technology and good service, been able to retain that key "front-of-mind" awareness. In other words, a positive presence that is readily recalled when the CONTROL's Readers' Choice Awards sur-

vey lands in the inbox and asks readers to name the vendors delivering the best technologies across 71 categories.

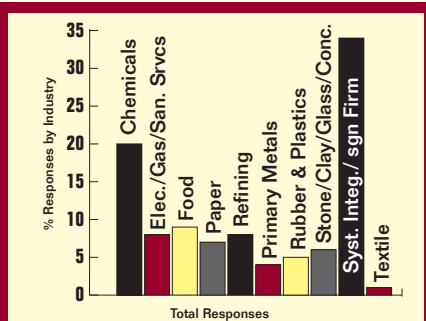
Similarly, we asked readers to rate vendors' ability to deliver customer service (see Table). This line of inquiry goes right to the heart of the matter because even if a company has the best technology it won't mean much if the mechanisms of delivery and after-the-sale service are not in place to keep you satisfied once the check has cleared.

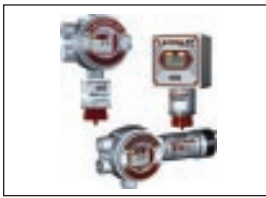
You Are the Judge

To our mind, you, our readers, are the ultimate judges of the "character" of the process industry's suppliers, and through your interactions with them, have the only truly valid opinion of their performance. Our intent with the Readers' Choice Awards is to provide you with a vehicle to voice your opinions in a way that broadcasts loud and clear to suppliers how they stand with the people who put the "P" in their profit margins. We think they'll listen.

READERS' CHOICE AWARDS SURVEY DEMOGRAPHICS

The 13th Annual Readers' Choice Awards survey was e-mailed to a controlled list of more than 20,000 representing a cross section of CONTROL's readership. Respondents were asked to write, unprompted, the name of the most outstanding supplier in each of 71 distinct technology categories. Respondents were also asked to rate that supplier on a scale of 1-5, with 1 being poor and 5 being excellent, on the basis of service. Results were tabulated from a total of 555 qualified responses. The survey's margin of error is an estimated 4% at a 90% confidence level and the Figure shows responses by industry.





MSA'S ULTIMA X SERIES GAS MONITOR

ANALYZERS, AMBIENT GAS DETECTORS

1. MSA	40%
2. Draeger	9%
Scott Bacharach	7%



MICRO MOTION'S ELITE FLOWMETER

ANALYZERS, DENSITY/CONCENTRATION

1. Emerson Process-Micro Motion	46%
2. Endress+Hauser	12%



SIEMENS' MAXUM EDITION II/MICROSAM

ANALYZERS, GAS CHROMATOGRAPH

1. Siemens-Applied Automation	28%
2. Emerson Process-Rosemount Analytical	23%
3. ABB	18%



GE'S MIS MOISTURE ANALYZER FAMILY

ANALYZERS, HUMIDITY/MOISTURE

1. GE Panametrics	20%
2. Vaisala	14%
3. Ametek	8%



ROSEMOUNT'S PH/ORP FAMILY

ANALYZERS, PH/ORP/CONDUCTIVITY

1. Emerson Process-Rosemount Analytical	38%
2. Yokogawa	11%
3. ABB	8%
Invensys Foxboro	7%
GLI Hach div. of Danaher	7%
Endress+Hauser	6%
7. Mettler-Toledo	5%



ABB'S CONTINUOUS GAS FAMILY, AMETEK'S PROLINE AND EMERSON'S MLT SERIES

ANALYZERS, PROCESS SPECTROMETER

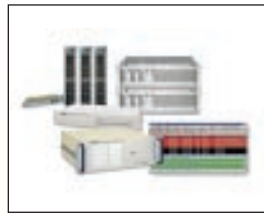
1. ABB	7%
Ametek	7%
Emerson	7%



ROSEMOUNT ANALYTICAL'S MICROCEM

ANALYZERS, STACK GAS/EMISSIONS

1. Emerson Process-Rosemount Analytical	24%
2. Horiba Instruments	7%
Siemens	7%



RONAN ENGINEERING'S X500F

ANNUNCIATORS

1. Ronan Engineering	21%
2. Ametek Panalarm	16%
3. Rockwell Automation	11%



EMERSON'S FISHER DIGITAL VALVE

CONTROL VALVES

1. Emerson Process-Fisher Controls	65%
2. Flowserve-Valtek	11%
3. Dresser Masoneilan	7%



HOFFMAN'S GOLD SERIES DESK CONSOLES

ENCLOSURES

1. Hoffman	73%
2. Rittal	9%



MICRO MOTION'S F-SERIES

FLOWMETERS, CORIOLIS

1. Emerson Process-Micro Motion	81%
2. Endress+Hauser	9%



ROSEMOUNT'S 8700 SERIES

FLOWMETERS, MAGNETIC

1. Emerson Process-Rosemount	43%
2. Yokogawa	11%
Endress+Hauser	9%
4. ABB	8%
Krohne	6%
6. Invensys Foxboro	5%



SIEMENS' OCM III

FLOWMETERS, OPEN CHANNEL

1. Siemens-Milltronics	23%
2. Emerson Process-Rosemount	9%
Badger Meter	7%
Endress+Hauser	7%



BROOKS' BM SERIES OVAL, MODEL BM10

FLOWMETERS, POSITIVE DISPLACEMENT

1. Emerson Process-Brooks	48%
2. Badger Meter	6%
IDEX Liquid Controls	6%



FCI'S ST50 SERIES MASS FLOWMETERS

FLOWMETERS, THERMAL MASS FLOW

1. FCI	45%
2. Kurz Instruments	13%
Emerson Process-Brooks	11%
4. Sierra Instruments	5%



DANIEL'S SERIES 1500

FLOWMETERS, TURBINE

1. Emerson Process-Daniel	28%
2. Hoffer Flow Control	9%
Badger Meter	8%
4. Flow Technology	5%



GE ULTRASONIC FLOWMETER

FLOWMETERS, ULTRASONIC

1. GE Panametrics	34%
2. Emerson Process-Daniel	23%
3. Thermo Electron-Polysonics	14%
4. Controltron	9%
Endress+Hauser	7%



BROOKS' AR-MITE MODEL 3750C

FLOWMETERS, VARIABLE AREA

1. Emerson Process-Brooks	54%
---------------------------	-----



ROSEMOUNT'S REDUCER VORTEX

FLOWMETERS, VORTEX SHEDDING

1. Emerson Process-Rosemount	39%
2. Yokogawa	22%
3. Invensys Foxboro	13%
4. Endress+Hauser	9%



FCI'S MASS FLOW SWITCHES

FLOW SWITCHES

1. FCI	35%
2. Endress+Hauser	12%
ifm efector	10%
4. Dwyer	5%



DELL'S POWEREDGE 2850

INDUSTRIAL COMPUTERS

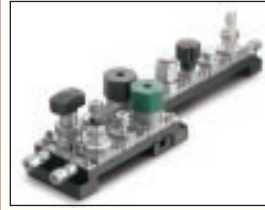
1. Dell Computer	25%
2. Rockwell Automation	15%
3. Advantech	6%
Xycom	5%



ALLEN-BRADLEY'S ARMORPOINT I/O

INPUT/OUTPUT (I/O) SYSTEMS

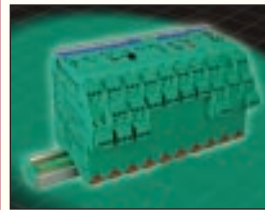
1. Rockwell Automation	38%
2. Emerson Process Management	9%
3. AutomationDirect.com	5%



SWAGELOK'S MPC

INSTRUMENT FITTINGS

1. Swagelok	63%
2. Parker Hannifin	26%



PEPPERL+FUCHS' K-SYSTEM

INTRINSIC SAFETY BARRIERS

1. Pepperl+Fuchs	19%
2. Banner Engineering	11%
MTL	11%
4. Rockwell Automation	6%
Phoenix Contact	5%
Turck	5%



AMETEK'S UNIVERSAL III, ENDRESS+HAUSER'S MINICAP AND EMERSON'S FISHER TYPE DL3

LEVEL GAUGES, ELECTRICAL PROPERTY-BASED

1. Ametek Drexelbrook	16%
Endress+Hauser	16%
Emerson Process-Fisher Controls	14%
4. Magnetrol	6%



EMERSON'S FISHER TYPE DL3

LEVEL GAUGES, FLOAT/DISPLACER TYPE

1. Emerson Process-Fisher Controls	35%
2. Magnetrol-Orion	31%
3. Danaher Gems Sensors	8%
Dresser Masoneilan	6%
K-Tek	6%



OHMART VEGA'S FLEX 67

LEVEL GAUGES, TDR RADAR

1. Ohmart Vega	31%
2. Emerson Process-Rosemount	26%
3. Endress+Hauser	22%
Magnetrol	22%
5. Krohne	9%



OHMART VEGA'S PULS 68 AND EMERSON-ROSEMOUNT'S 5600

LEVEL GAUGES, NON-CONTACT RADAR

1. Ohmart Vega	30%
Emerson Process-Rosemount	28%
3. Endress+Hauser	19%
4. Siemens-Milltronics	7%



SAAB ROSEMOUNT'S TANKRADAR REX

LEVEL GAUGE, INVENTORY GRADE

- | | |
|-----------------------------------|-----|
| 1. Emerson Process-Saab Rosemount | 30% |
| 2. Endress+Hauser | 12% |



OHMART VEGA'S FIBER FLEX

LEVEL GAUGES, NUCLEAR

- | | |
|--------------------|-----|
| 1. Ohmart Vega | 36% |
| 2. Thermo Electron | 33% |



MILLTRONICS' MULTIRANGER

LEVEL GAUGES, ULTRASONIC

- | | |
|--|-----|
| 1. Siemens Milltronics | 37% |
| 2. Endress+Hauser | 11% |
| 3. Magnetrol | 6% |
| Emerson Process Measurement-Saab Rosemount | 6% |
| Ohmart Vega | 6% |
| Flowline | 5% |



ENDRESS+HAUSER'S LIQUIPHANT M

LEVEL SWITCHES, POINT

- | | |
|-----------------------|-----|
| 1. Endress+Hauser | 26% |
| 2. Ametek Drexelbrook | 17% |
| 3. Magnetrol | 11% |
| 4. SOR | 5% |
| Thermo Electron | 5% |



ALLEN-BRADLEY'S INVIEW MESSAGE DISPLAY

OPERATOR INTERFACE TERMINALS

- | | |
|------------------------|-----|
| 1. Rockwell Automation | 47% |
| 2. Honeywell | 5% |



ALLEN-BRADLEY'S PANELVIEW PLUS

PANEL DISPLAYS

- | | |
|------------------------|-----|
| 1. Rockwell Automation | 45% |
| 2. Red Lion | 10% |



FLUKE'S 744 DOCUMENTING PROCESS CALIBRATOR

PORTABLE CALIBRATORS

- | | |
|---------------------------|-----|
| 1. Fluke, a Danaher Co. | 51% |
| 2. Altek/Transmation | 12% |
| 3. GE Druck | 7% |
| Emerson Process-Rosemount | 5% |



SOLA/HEVI-DUTY'S SDN PERFORMANCE DIN RAIL SERIES

POWER SUPPLIES

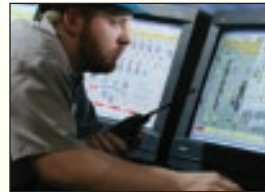
- | | |
|--------------------|-----|
| 1. Sola/Hevi-Duty | 27% |
| 2. Acopian | 17% |
| 3. Phoenix Contact | 8% |
| 4. Idec | 5% |



ROSEMOUNT'S 3051S SERIES

PRESSURE TRANSMITTERS

- | | |
|------------------------------|-----|
| 1. Emerson Process-Rosemount | 73% |
| 2. Honeywell | 7% |



EMERSON'S DELTAV DIGITAL AUTOMATION SYSTEM

PROCESS CONTROL/AUTOMATION SYSTEMS

- | | |
|-------------------------------|-----|
| 1. Emerson Process Management | 29% |
| 2. Rockwell Automation | 22% |
| 3. Honeywell | 9% |
| Invensys | 9% |
| 5. Siemens | 6% |
| ABB | 5% |



HONEYWELL UDC3200 UNIVERSAL DIGITAL CONTROLLER

PROCESS LOOP CONTROLLERS

- | | |
|-------------------------------|-----|
| 1. Honeywell | 19% |
| 2. Emerson Process Management | 9% |
| ABB (sold to MicroMod Inc.) | 8% |
| Invensys-Foxboro | 8% |
| Yokogawa | 8% |
| Moore Industries | 7% |
| 7. Siemens | 5% |



ALLEN-BRADLEY'S CONTROLLOGIX CONTROLLER

PROGRAMMABLE LOGIC CONTROLLERS

- | | |
|------------------------|-----|
| 1. Rockwell Automation | 67% |
| 2. Schneider Electric | 6% |
| AutomationDirect.com | 5% |
| Siemens | 5% |



PEPPERL+FUCHS' SERIES 4000

PURGE SYSTEMS

- | | |
|------------------------|-----|
| 1. Pepperl+Fuchs-Bebco | 36% |
|------------------------|-----|



YOKOGAWA'S DAQSTATION DX SERIES

RECORDERS

- | | |
|--------------------------------|-----|
| 1. Yokogawa | 25% |
| 2. Honeywell | 14% |
| 3. Invensys Eurotherm Chessell | 6% |
| ABB | 5% |



ALLEN-BRADLEY'S SCL 500

REMOTE TERMINAL UNITS

1. Rockwell Automation	34%
2. Emerson Process Management	6%
Honeywell	6%
SixNet	5%



ROSEMOUNT'S RTDS

RESISTANCE TEMPERATURE DETECTORS

1. Emerson Process-Rosemount	47%
2. Pyromation	10%
3. Omega Engineering	7%
Burns Engineering	5%
JMS Southeast	5%



TRICONEX'S TRIDENT

SAFETY/EMERGENCY SHUTDOWN SYSTEMS

1. Invensys-Triconex	22%
2. Rockwell Automation	11%
Honeywell	9%
4. Siemens	6%



MOORE INDUSTRIES' SPA2

SIGNAL CONDITIONERS

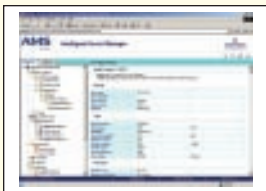
1. Moore Industries Int'l	18%
2. Invensys Eurotherm	14%
Action Instruments	14%
3. Phoenix Contact	8%
Acromag	6%



EMERSON'S DELTAV EMBEDDED
ADVANCED CONTROL

SOFTWARE, ADVANCED PROCESS CONTROL

1. Emerson Process Management	25%
2. Honeywell	12%
Rockwell Automation	11%
4. AspenTech	9%
Invensys	9%



EMERSON'S AMS SUITE:
INTELLIGENT DEVICE MANAGER

SOFTWARE, ASSET MANAGEMENT

1. Emerson Process Management	37%
2. SAP	8%



EMERSON'S DELTAV BATCH

SOFTWARE, BATCH CONTROL

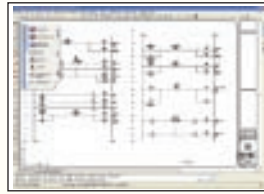
1. Emerson Process Management	27%
2. Rockwell Automation	13%
3. Invensys Wonderware	8%
Invensys Foxboro	7%
Honeywell	6%



EMERSON'S AMS SUITE
CALIBRATION ASSISTANT

SOFTWARE, CALIBRATION MANAGEMENT

1. Emerson Process Management	25%
2. Honeywell	11%
3. Danaher Fluke	5%



AUTODESK'S AUTOCAD
ELECTRICAL 2005

SOFTWARE, DESIGN/DOCUMENTATION

1. AutoDesk AutoCAD	36%
2. Microsoft Visio	8%
Intergraph	7%



INVENSYS' INTOUCH 9.0 HMI SOFTWARE

SOFTWARE, HUMAN-MACHINE INTERFACE

1. Invensys Wonderware	32%
2. Rockwell Automation	24%
3. GE Infrastructure	12%



EXPERTUNE'S ANALYZER & TUNER

SOFTWARE, LOOP TUNING

1. Expertune	20%
2. Emerson Process Management	16%
3. Rockwell	7%
Honeywell	6%



EMERSON'S DELTAV NEURAL

SOFTWARE, NEURAL NETWORKS

1. Emerson Process Management	15%
2. Pavilion Technologies	10%



EMERSON'S DELTAV V7.4 SOFTWARE

SOFTWARE, PROCESS CONTROL

1. Emerson Process Management	27%
2. Rockwell Automation	18%
3. Honeywell	10%
4. Invensys Wonderware	7%
Invensys Foxboro	7%



ROCKWELL SOFTWARE'S
RSLOGIX 5000

SOFTWARE, PLC PROGRAMMING

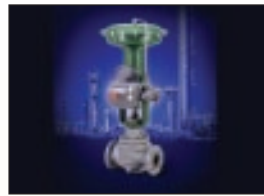
1. Rockwell Automation	68%
2. Schneider Electric	6%



INVENSYS' SCADALARM 6.0

SOFTWARE, SCADA

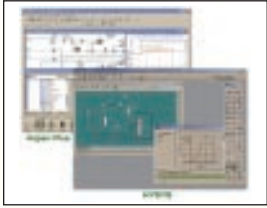
1. Invensys Wonderware	21%
2. GE Infrastructure	12%
Rockwell Automation	11%
4. Emerson Process Management	6%
National Instruments	6%
OSISoft	5%



EMERSON'S FISHER
TYPE 657 ACTUATOR

VALVE ACTUATORS, PNEUMATIC

1. Emerson Process-Fisher Controls	54%
2. Flowserve-Valtek	12%



ASPENTECH'S ASPEN PLUS AND HYSYS

SOFTWARE, SIMULATION

1. AspenTech	20%
2. Mynah Technologies	10%
Rockwell Automation	10%
Invensys	9%



ALLEN-BRADLEY'S POWERFLEX
FAMILY OF AC DRIVES

VARIABLE FREQUENCY DRIVES

1. Rockwell Automation	58%
2. ABB	6%
Toshiba	6%



RAYTEK'S MID

TEMPERATURE SENSORS, INFRARED

1. Danaher Fluke-Raytek	24%
2. IRCON	13%



GE ENERGY'S
CONDITION MONITOR

VIBRATION SENSORS

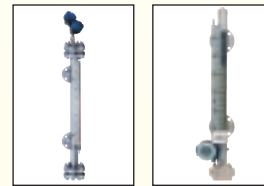
1. GE Energy (Bently Nevada)	57%
------------------------------	-----



ROSEMOUNT'S 3144P

TEMPERATURE TRANSMITTERS

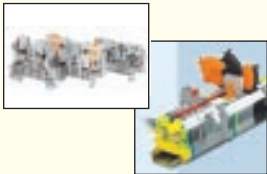
1. Emerson Process-Rosemount	60%
2. Honeywell	8%
3. Invensys Foxboro	5%
Omega Engineering	5%



MAGNETROL-ORION'S AURORA
AND K-TEK'S KM26

VISUAL LEVEL INDICATORS

1. Magnetrol-Orion	18%
K-Tek	16%
3. Penberthy	11%
4. Clark-Reliance (Jerguson)	8%
Emerson Process-Brooks	8%



ROCKWELL'S BULLETIN 1492
AND PHOENIX CONTACT'S UT
UNIVERSAL SCREW CLAMP

TERMINAL BLOCKS

1. Rockwell Automation	26%
Phoenix Contact	24%
3. Weidmüller	17%
4. Entelec	7%



METTLER TOLEDO'S Q.I. SOLUTION

WEIGHING SYSTEMS, LOAD CELL

1. Mettler Toledo	35%
2. Vishay BLH	13%
3. Hardy Instruments	10%
4. Danaher Venture Measurement (Kistler Morse)	7%



OMEGA'S AND ROSEMOUNT'S
THERMOCOUPLE PROBES

THERMOCOUPLES

1. Omega Engineering	23%
Emerson Process-Rosemount	21%
3. Pyromation	7%
JMS Southeast	5%
Watlow	5%



METTLER TOLEDO'S
CORNERSTONE SERIES

WEIGHING SYSTEMS, INLINE

1. Mettler Toledo-Hispeed	20%
2. Thermo Electron-Ramsey	9%
Siemens-Milltronics	9%



FLOWSERVE LIMITORQUE'S MX-05
AND ROTORK'S 1QT

VALVE ACTUATORS, ELECTRIC

1. Flowserve-Limitorque	13%
Rotork	12%
3. Emerson Process-Fisher Controls	10%
Flowserve-Valtek	8%
5. Beck	6%



BELDEN'S DATATUFF ETHERNET LINE

WIRE & CABLE

1. Belden	56%
-----------	-----

VENDORS OFFERING EXCEPTIONAL SERVICE (5 = EXCELLENT, 1 = POOR)

5.0

AmetekProcess Spectrometers
AutomationDirect.comProcess Control Systems
TurckIntrinsic Safety Barriers

4.5+

AmetekHumidity/Moisture Analyzers
AutomationDirect.comPLC Programming Software
AutomationDirect.comProgrammable Logic Controllers
AutomationDirect.comTerminal Blocks
Banner EngineeringSafety/Emergency Shutdown Systems
DwyerFlow Switches
EIMElectric Valve Actuators
Emerson Process ManagementHMI Software
Emerson Process ManagementLoop Controllers
Emerson Process ManagementPortable Calibrators
Emerson Process ManagementProcess Spectrometers
Emerson Process-RosemountPressure Transmitters
Emerson Process-RosemountResistance Temperature Detectors
Emerson Process-RosemountTemperature Transmitters
Endress+HauserUltrasonic Flowmeters
FestoPneumatic Valve Actuators
Flowserve-ValtekPneumatic Valve Actuators
InvensysAdvanced Process Control Software
Invensys Eurotherm ChessellRecorders
Red LionPanel Displays
SiemensPressure Transmitters
Sierra InstrumentsThermal Mass Flowmeters
SixNetRemote Terminal Units
ThermoElectron-RamseyInline Weighing Systems
ThermoElectron (Sensall)Point Level Switches
Vishay BLHWeighing System/Load Cell
WatlowResistance Temperature Detectors
YokogawaProcess Control Systems
YokogawaTemperature Transmitters

4.4

Control MicrosystemsRemote Terminal Units
Dresser MasoneilanFloat/Displacer Level Transmitters
Emerson Process ManagementLoop Tuning Software
Emerson Process ManagementNeural Network Software
Emerson Process ManagementBatch Control Software
Emerson Process-MicromotionDensity/Concentration Analyzers
Emerson Process-RosemountElectrical Property-Based Level Transmitters
HoneywellPressure Transmitters
Mynah TechnologiesSimulation Software
Phoenix ContactPower Supplies
Rockwell AutomationSafety/Emergency Shutdown Systems

4.3

ABBBatch Control Software
Ametek DrexelbrookElectrical Property-Based Level Transmitters
AspentechSimulation Software
BeamexPortable Calibrators
Clark-Reliance (Jerguson)Level Visual Indicators
Dresser MasoneilanControl Valves
Emerson Process ManagementAsset Management Software
Emerson Process ManagementCoriolis Mass Flowmeters
Emerson Process ManagementMagnetic Flowmeters
Emerson Process ManagementProcess Control Software

Emerson Process ManagementProcess Control Systems
Emerson Process ManagementSCADA Software
Emerson Process ManagementSafety/Emergency Shutdown Syst.
Emerson Process ManagementRemote Terminal Units
Emerson Process ManagementThermal Mass Flowmeters
Emerson Process-Fisher ControlsElectric Valve Actuators
Emerson Process-Fisher ControlsPneumatic Valve Actuators
Emerson Process-RosemountTDR Radar Level Transmitters
Emerson Process-RosemountThermocouples
Emerson Process-Saab RosemountNon-contact
.....Radar Level Transmitters
Emerson Process-Saab RosemountInventory-Grade Tank Level Gauge
Endress+HauserNon-contact Radar Level Transmitters
Endress+HauserVortex Shedding Flowmeters
Flowserve-ValtekControl Valves
Invensys FoxboroResistance Temperature Detect.
Invensys WonderwareBatch Control Software
Invensys WonderwareSCADA Software
JMS SoutheastThermocouple
MTLIntrinsic Safety Barriers
National InstrumentsProcess Control Software
Ohmart VegaResistance Temperature Detectors
Pavilion TechnologiesNeural Network Software
Pepperl+Fuchs/BebcoPurge Systems
PyromationThermocouples
RobiconVariable Frequency Drives
Rockwell AutomationVariable Frequency Drives
SiemensPLC Programming Software
SwagelokInstrument Fittings
YokogawaLoop Controllers
YokogawaMagnetic Flowmeters
YokogawaRecorders

4.2

ABBpH/ORP/Conductivity Analyzers
AcopianPower Supplies
BeldenWire & Cabling
Danaher-Gems SensorsFloat/Displacer Level Transmitters
Dell ComputerIndustrial Computers
Emerson Process ManagementInput/Output (I/O) Systems
Emerson Process-Fisher ControlsControl Valves
Emerson Process-Fisher Controls Float/Displacer Level Transmitters
Endress+HauserElectrical Prop.-based Level Transmitters
Endress+HauserCoriolis Mass Flowmeters
Endress+HauserMagnetic Flowmeters
Endress+HauserPressure Transmitters
GLI Hach div. of DanaherpH/ORP/Conductivity Analyzers
Hardy InstrumentsWeighing Systems/Load Cells
HoffmanEnclosures
HoneywellLoop Tuning Software
HoneywellTemperature Transmitters
Invensys FoxboropH/ORP/Conductivity Analyzers
Invensys FoxboroPressure Transmitters
JMS SoutheastResistance Temperature Detectors
Mettler ToledoInline Weighing Systems
OSISoftSCADA Software
Phoenix ContactTerminal Blocks
PyromationResistance Temperature Detectors
Rockwell AutomationRemote Terminal Units
WatlowThermocouples
WeidmüllerTerminal Blocks

**FIND MORE SERVICE SCORES
BY VISITING CONTROLGLOBAL.COM**