

# FloBoss™ 107E Flow Manager.

The FloBoss™ 107E is an environmentally-packaged version of the FloBoss 107 flow computer that builds upon the “best in class” measurement and control capabilities of the FloBoss family of products. Its new packaging and available touchpad user interface make the FloBoss 107E the ideal solution for many remote installations. The FloBoss 107E shares the functional and hardware features of the FloBoss 107 base unit, but does not use an expansion rack.

The FloBoss 107E supports up to four meter runs using multi-variable sensors. One sensor can mount to the bottom of the enclosure. Additional sensors are remotely mounted and connect to the unit through a single multi-variable sensor module. A pressure module can replace the enclosure-mounted multi-variable sensor for pressure only measurement. Functionally, the FloBoss 107E provides:

- **API / AGA / ISO Compliant Flow Measurement.** API Chapter 21.1 compliant historical archives for measured and calculated values, events, and alarms, as well as AGA3 orifice, AGA7 pulse, and ISO 5167 flow calculations using AGA8 compressibility.
- **Scalable and Configurable I/O.** Add an I/O board to the CPU module and up to three I/O modules to the module rack. Each I/O board and module is configured by software as to input or output type.
- **Communication Choices.** Local operator interface, RS-232, and RS-485 ports are standard. Plug-in modules support other communication methods.
- **Built-in Control Capability.** Perform PID primary and override control on up to 8 loops using analog or discrete outputs. Logic and sequencing control is provided through Function Sequence Tables (FSTs).

## Enclosure

The FloBoss 107E is protected from the elements by a rugged steel enclosure that meets CSA Type 4 rating (NEMA 4 equivalent) and is designed for panel or pipestand mounting. It houses the FloBoss 107 base unit and provides mounting space for up to four 7-amp-hour batteries, a data radio, and a remote dual-variable sensor or pressure module. The optional LCD touchpad attaches to the front cover.

## LCD Touchpad

The optional LCD touchpad gives users the flexibility to view and enter configuration and operating parameters without the need for an external local operator interface. The touchpad is transreflective for high visibility even in bright



*FloBoss 107E with optional LCD touchscreen and multi-variable sensor.*

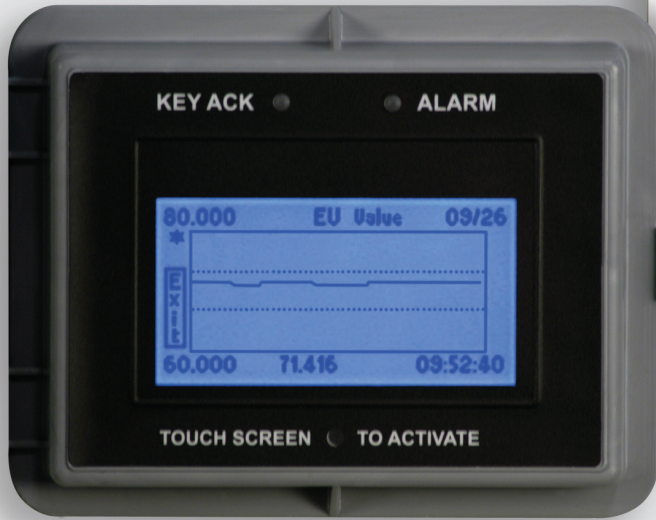
sunlight and is backlit for night viewing. Browse through lists or screens and enter numeric values by simply touching the screen with your finger. Easy-to-navigate menus and screens let you access commonly used parameters. The main menu gives you:

- **User lists** - Displays a list of 16 parameter values. You can define up to four lists, for a total of up to 64 parameters.
- **Meter runs** - Displays values for up to four meter runs.
- **PID** - Displays and permits changes to defined PID parameters.
- **Chart** - Displays historical or dynamic information in a graphical format.
- **Module** - Displays parameter values associated with each installed module.
- **System** - Enables you to access and modify some general system parameters.

The main menu accesses submenus that provide additional information or data entry options.

## Remote Automation Solutions

Phone (641) 754-3449 Toll Free (800) 807-0730 (US & Canada only)  
 FAX (641) 754-3630  
 Website: [www.EmersonProcess.com/remot](http://www.EmersonProcess.com/remot)



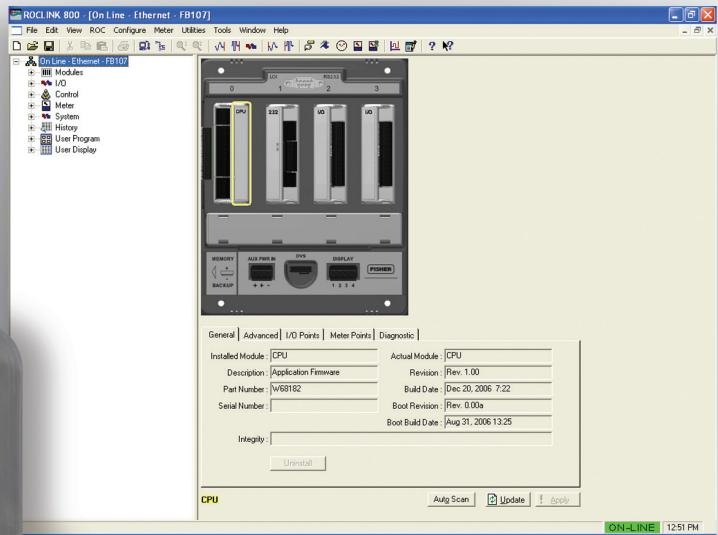
*LCD Touchscreen lets you chart current and historical data.*

The touchpad provides two modes of operation, Normal and Basic List Mode (BLM). Normal mode requires a user logon to enable viewing or entry of data. BLM mode presents a scrolling list of read-only data without requiring a logon.

You can easily detect and troubleshoot Integrity and alarm conditions with the touchpad. A red alarm LED illuminates whenever an alarm or integrity condition occurs and a flashing asterisk (\*) on each screen leads you through the main and submenus until the exact problem is identified.

A powerful charting feature lets you graph real-time and historical data on the touchpad. The graphical presentation of data gives you the capability to monitor, adjust, and troubleshoot the operation of your process quickly and easily while on-site. Hourly and daily historical data may be configured for charting.

Security for the touchpad is defined in ROCLINK™ 800 Configuration Software, allowing you to customize individual user access. You can select lists of parameters for up to 16 users to both view and edit or to view only.



**FloBoss 107E Dynamic Interface makes configuration and operation faster and easier using ROCLINK™ 800.**

## Dynamic Interface

Dynamic interface, in conjunction with ROCLINK 800, gives you an easy new way of configuring and using the FloBoss 107E. Dynamic interface lets you virtually “see” a FloBoss 107E that is installed at a remote site, on your computer screen, wherever you have communication access.

Dynamic interface shows the base unit and any I/O or communication modules installed in it. To configure an I/O module or communications port you merely point and click on the module to open a dialog box with parameters.

The FloBoss 107E notifies you of operational problems in two ways. Integrity notifications indicate hardware problem and alarms indicate functional problems with software or field devices.

Notifications appear on both the graphical representation of the FloBoss 107E and on the dialog box below it. Notifications are color-code to help you quickly identify and resolve the alarms. Integrity notifications display the letter “I” in a red box next to the affected module and alarm notifications display the letter “A” in a yellow box. Moving a cursor over these letters displays a definition of the notification.

## Learn More

We want you to start realizing the many benefits of the FloBoss 107E today. For a demonstration, contact the Emerson Local Business Partner (LBP) or sales office in your area. If you don’t know who they are, please visit our web site.