

Emerson Manufacturing and Technology Centers Tianjin, China

Control Valve and Valve Automation

艾默生在中国天津的制造和技术中心
控制阀和阀门自动化

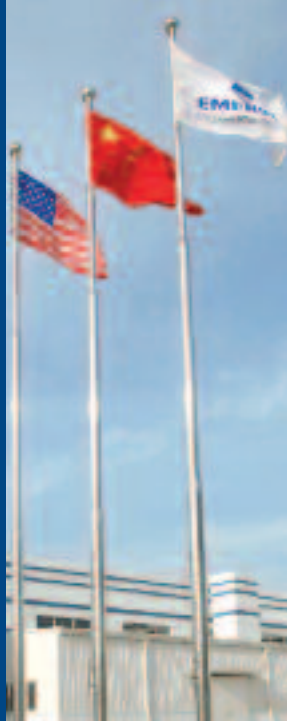


Emerson

A U.S. based company, Emerson was founded in 1890 in St. Louis, Missouri. Today, Emerson (NYSE: EMR) operates as a truly global company, where technology and engineering merge to generate innovative solutions to ensure your success. Its people are driven towards the global marketplace without compromise.

Renowned for its engineering capabilities and outstanding management process, Emerson has more than 128,000 employees and over 270 manufacturing locations across the globe.

Emerson's three new centers in Tianjin, China, will keep our customers on the cutting edge with control valve and valve actuation research, development, testing and manufacturing.



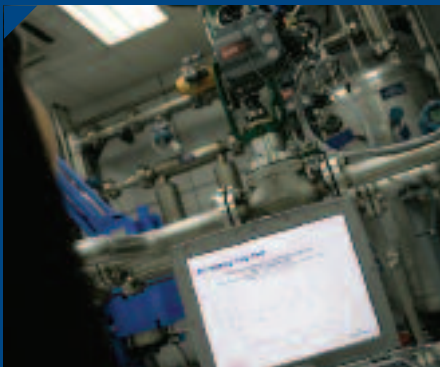
艾默生

总部位于美国密苏里州圣路易斯市，创建于1890年的艾默生（纽约证券交易所NYSE: EMR）是一家知名的跨国公司，在这里先进的技术不断融入工程实践创造出创新性的解决方案，为您的成功提供保证。艾默生的员工不懈地致力于开拓全球市场。

在工程实力和过程管理上享有盛誉的艾默生拥有128,000多名员工和超过270处工厂遍布全球。

艾默生在中国天津开设的三个新的中心，这将使我们在控制阀和执行机构产品的研发、测试和生产方面具有向客户提供更高水平服务的实力。

Our Core Strengths • 我们的核心实力



Innovative Engineering

Our best-in-class technologies better control and manage your processes.

不断创新的工业技术

我们的顶级技术可以更好的控制和管理您的生产工艺流程。



Credible Solutions

Our global team offers unmatched capabilities to optimize all your process and plant assets.

可靠的解决方案

我们全球化的技术团队可提供完善的技术支持，优化客户所有的工艺流程和装置设备。



Global Industry Expertise

Our engineers possess key industry knowledge and expertise in solving process control problems.

全球工业专家

我们的工程师拥有解决工艺控制各方面问题的关键知识和专业经验。



Fisher® Control Valves

As one of the world's largest control valve manufacturers, our Fisher® Brand control valves, valve instrumentation and services are designed to improve throughput, quality and availability while reducing the overall cost of operations. Whether you are in oil and gas, refinery, petrochemical and chemicals, food and beverages, pulp and paper, life sciences, power or pharmaceuticals, our comprehensive product range and innovative technology deliver precisely what you seek.

Valve Automation

Emerson also offers an extensive lineup of pneumatic, hydraulic, electric, and gas hydraulic valve automation products and services. These valve automation products and services complement Emerson's extensive capabilities in automation solutions for the process industries.

费希尔控制阀

艾默生经由费希尔产品向客户提供久经时间考验的和创新性的解决方案，以满足客户的需求。不管您从事的是石油和天然气、炼油、石化和化工、食品饮料、纸浆造纸、生命科学、电力或医药中的何种行业，我们全面的产品种类和创新的技术都能提供让您满意的服务。

阀门自动化

艾默生同时提供多种气动、液动、电动、和气液联动阀门自动化及附件。这些自动化产品拓展了艾默生在工艺自动化领域的竞争力。

Emerson's Control Valve Manufacturing Center
艾默生控制阀制造中心



An Ongoing Commitment

Located in China's Wuqing Development Area in Tianjin, Emerson's newest control valve manufacturing center in Asia began its operations in 2004 and is situated on over 12,000 sqm of land area.

Established as both a global product quality manufacturing site and a certified service center, it represents our commitment to the dynamic Asia Pacific region which we serve.

一项正在实现的承诺

艾默生在亚洲最新建立的控制阀制造中心位于中国天津武清开发区，于2004年投产，占地超过12,000平方米。

天津工厂同时承担快速响应制造基地和售后服务中心的功能，该工厂履行了我们向不断扩大的亚太区客户群提供更高质量服务的承诺。





Emerson's Control Valve Manufacturing Center
艾默生控制阀制造中心



Our Center, Our People

Positioned in a vibrant high growth market, the manufacturing center is fully fitted with leading edge technology and skilled engineers who are rigorously trained on a continual basis to the exacting standards you have come to expect of Emerson.

Being fully accredited and certified, our manufacturing center meets stringent quality guidelines and international engineering standards.

Our manufacturing center includes spare parts support which offers quick replacement parts via the FisherFAST™ program. Control valve services are also available to provide diagnostics, repair, plant start-up and outage management.

我们的中心，我们的员工

作为面向急速扩展市场的公司，我们的制造中心拥有领先的技术设备和技能熟练的工程师，工程师都持续地接受严格的培训，严格的培训标准完全能达到您对艾默生的期望值。这保证了艾默生在任何地方都具有一贯的高超水平。

经过全面的质量稽核，我们的制造中心符合严格的国际指导标准，每个阀门零件都经过彻底的检验，因此您足可以放心产品质量。

制造中心还包括一个备件和服务中心，它们为客户提供尖端的技术服务。我们的快速备件服务可快速地为客户送交更换的零件，同时提供开车、控制阀诊断、维修和运送服务。



Emerson's Control Valve Manufacturing Center
艾默生控制阀制造中心



Operational and Quality Excellence

Emerson conducts annual global operation and quality audits in all of its control valve manufacturing centers, which are ISO certified. We adhere to quality standards in accordance with internationally accepted policies and benchmarks.

Lean Manufacturing

Customer success is our primary focus. We use Lean manufacturing tools to provide greater operating efficiencies in meeting market demanded lead times.



卓越产品质量和生产运营

艾默生已通过ISO认证,每年都对全球所有控制阀制造中心进行生产运营和质量的审核。我们坚决执行国际公认的质量认证标准。

精益化生产

客户的成功是我们首要关注的焦点。我们采用精益化生产获得极高的生产效率,以满足市场要求的交货周期。





Our Competitive Edge

Strategically located beside the manufacturing center, our technology center performs Fisher control valve and valve instrumentation research and engineering. It is capable of validating control valve dynamic performance that is backed by research.

The center is a vital node in the acceleration of product development, engineering and testing, ensuring that customers are receiving the finest products and services.

In addition to product design engineering and testing, our Engineering Specials services provide customized valves to suit your unique process needs.



我们的竞争优势

我们的技术中心战略性的设置在制造中心旁边，担任控制阀和阀门仪表的研发任务。技术中心可以验证阀门设计的动态性能。

技术中心在加快产品研发、生产和测试及保证客户获得最佳产品和服务方面扮演着重要角色。

除了标准产品设计制造和测试外，我们的特殊产品设计服务还可为客户提供满足客户特定工艺要求的阀门。

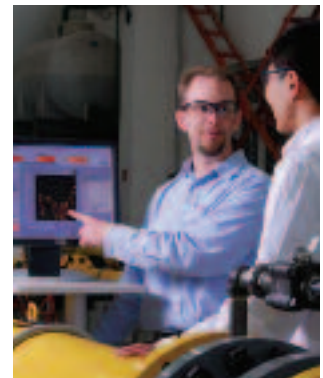
Emerson's Control Valve Technology Center
艾默生控制阀技术中心



Technology Driven Capability

Within the Technology Center, our flow lab is custom designed to simulate process conditions for product testing. Every Fisher valve design undergoes thorough evaluation to ensure exceptional performance and extended service life.

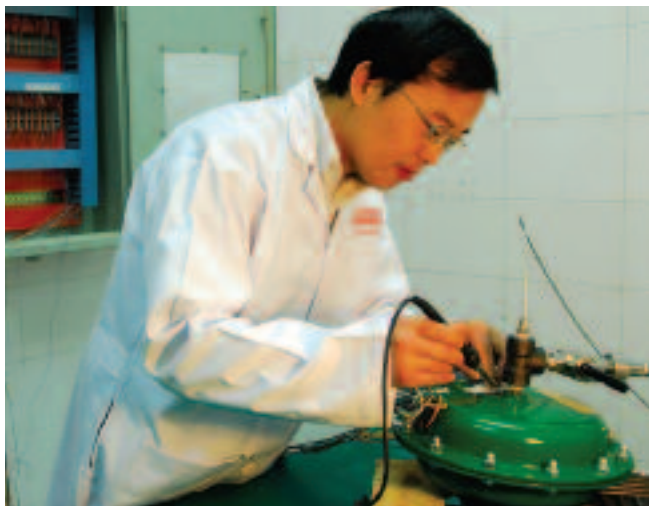
Additionally, research activity within the center includes experimental stress evaluation, materials analysis as well as testing at various temperatures and pressures.



技术研发能力

技术中心的流量实验室采用定制设计，具有仿真客户可模拟工艺流程条件进行产品测试的能力。每台费希尔阀门都经过全面测试以保证出色的性能和寿命。

另外，技术中心内的研发活动还包括应力试验测试，和在不同温度、压力下的材料试验与分析。





Continuous Training

People are our most valuable asset. Emerson brings out the best in its people through continual training. The level of competence and technical knowledge of Emerson engineers is consistent worldwide.



持续的培训

员工是我们最宝贵的资源。艾默生采用持续的培训教育不断将优秀的素质赋予我们的员工。艾默生工程师的竞争力和技术水平始终是世界一流的。



Emerson's Control Valve Service Center
艾默生控制阀服务中心



Our Service Center

The mission of our service center's presence in Tianjin City, Wuqing Development Area, is to bring convenience to our China customers. The control valve service center within our manufacturing center is here to diagnose, repair, replace and upgrade control valves so you maximize uptime.

Emerson helps manage your control valves and assets better through our comprehensive, reliability based service center and field capabilities provided either in our shop or at your plant. Whether you manage a power plant, a refinery, or anything in between, we can handle your process control equipment's maintenance and repair.

服务中心

我们在天津市武清开发区设立的服务中心旨在为我们的中国客户提供更加方便的服务。服务中心位于我们在武清的费希尔工业园区内，具备诊断，维修，更换零部件，整体阀门翻新等完整的服务功能，从而帮助您实现工厂设备正常运行时间最大化。

艾默生致力于通过我们在服务中心或您的工厂为您提供的综合、可靠的服务来优化您的控制阀及资产；无论是电力，炼油，或其他行业，我们都可以为您的过程控制设备提供维护和维修服务。



Quality Care

Our process for valve repair complies with strict detailed standards and is documented at each step from repair to inspection, testing and shipment.

Although the process is stringent in its details, yet it is flexible enough to address any unique requirements that you may have.

Whenever you send an old valve for servicing, our certified and factory trained technicians will make certain you get a fully refurbished valve back in no time, as good as new.

关注质量

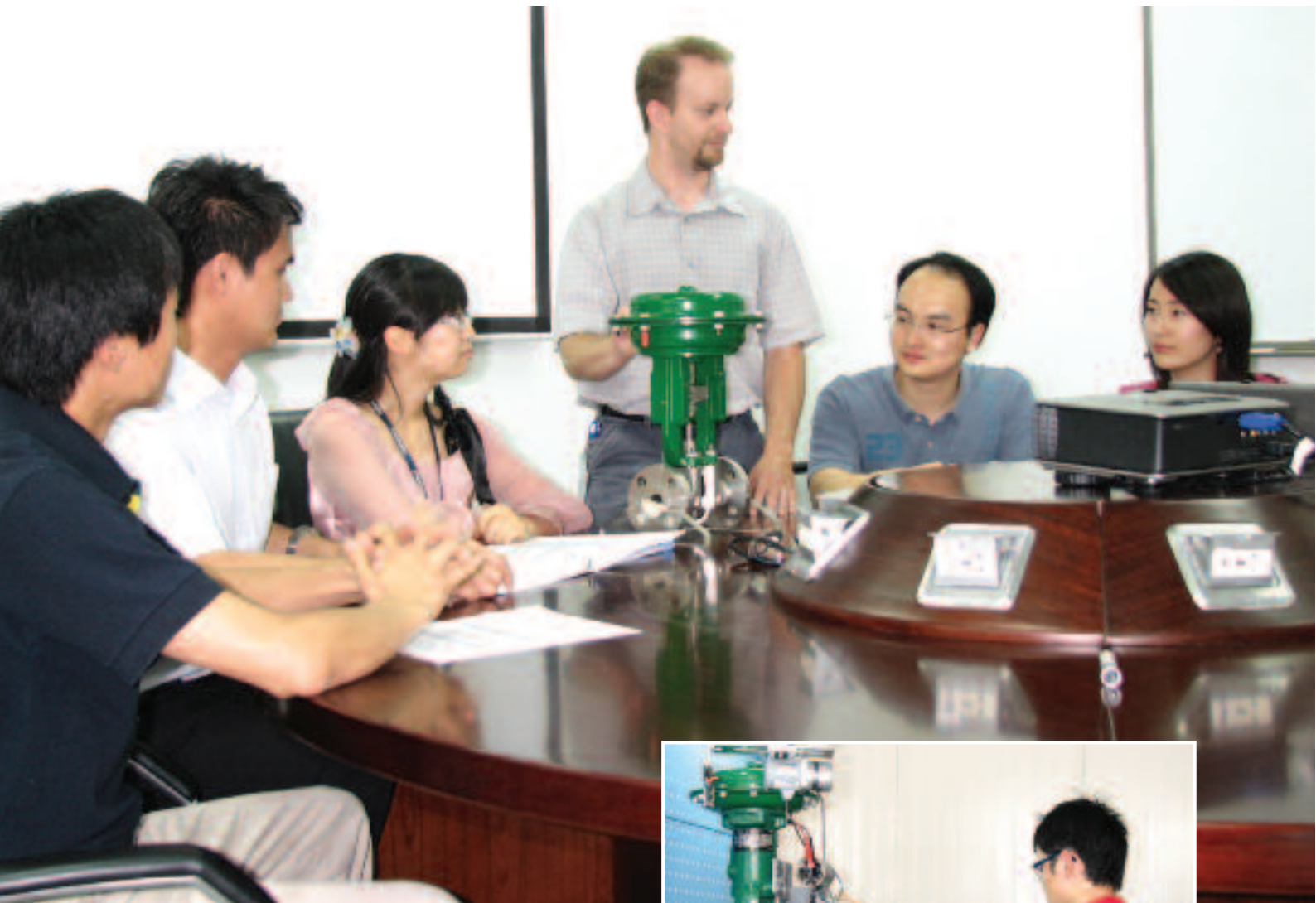
我们的阀门维修严格遵循阀门维修的标准流程。维修、检查、测试和发货的每一个环节都有具体规定。

虽然维修的步骤具体并严谨到每一个细节，但是对于客户遇到的特定问题，我们也具有足够的灵活性来处理特定的问题。

当您把旧阀门送来维护或维修，我们经过严格培训并获得服务认证的工程师将确保您即时带回一个焕然一新的阀门，其性能可达一台全新的阀门所具备的性能。



Emerson's Control Valve Service Center
艾默生控制阀服务中心



Training and Education for customers

The need for training is more important than ever to achieve and maintain cost-effective process operations. Through our training programs, customers receive current product and technology knowledge. We want customers to know how to get the most from Fisher valves and instruments through hands-on training courses and demonstrations at our Wuqing training and education center.

客户培训

为实现并保持过程管理成本的最优化，培训的重要性日益突出。通过参加培训，我们的客户可以了解最先进的调节阀产品和技术知识。我们希望通过武清培训中心的培训课程和现场演示能够让客户更加熟悉调节阀，了解如何从费希尔产品中获得最大收益。

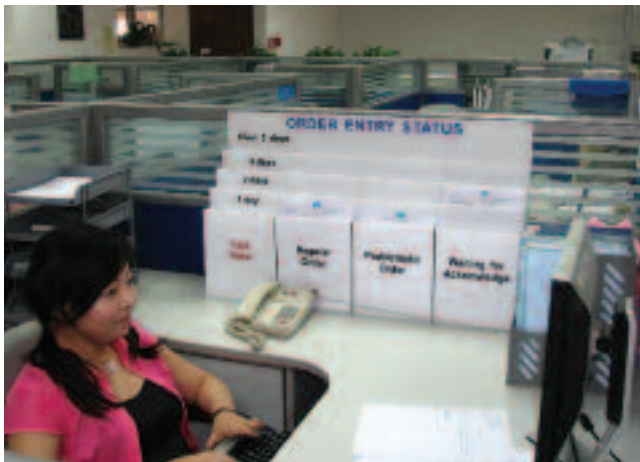


FAST Parts Operation

Next to our service center is our Fisher Parts inventory center. It is set up to offer quick spare and replacement parts via the FisherFAST program. More than 1500 genuine Fisher parts are stocked in this center to cater to your emergency needs.

Fast response, express delivery within 24 hours for parts in stock, reliable packaging and quality items from Wuqing Fast stock is part of the FisherFAST program we promise our customers.

The Fisher Parts Support Service is ready to assist you in the management of your spare parts inventory, the control of plant and inventory costs, and improving the bottom line of your entire operation.



Emerson's Control Valve Fast Parts Center 艾默生控制阀快速备件中心



FAST快速备件

与服务中心毗邻的是费希尔快速备件中心。中心通过快速备件服务为客户提供快速备件。备件中心存有1500多种费希尔零件用于满足您的紧急需求。

快速备件服务是我们对客户提供的承诺之一。艾默生武清费希尔快速备件中心将让您享受快速响应、可靠的质量和包装等便捷服务，对库存零件我们可以做到24小时内快速发货。

费希尔快速备件支持服务已经准备好并期待协助您优化您的备件库存管理、工厂控制和库存成本管理，提高您整体业务运作效率。

Emerson's Valve Automation Manufacturing & Technology Center
艾默生阀门自动化制造和技术中心

Operational Excellence

Emerson has the reputation of providing quality valve actuation with short lead times. With the company's customer centric strategy of best service and best products, our Valve Automation manufacturing center located in China's Wuqing Development Area in Tianjin is using the latest lean manufacturing tools.

Our continued focus on Lean is an integral part of our manufacturing strategy and is fundamental to the way we manage product development, operations, supplier and customer relationships.

With our proximity to the Fisher control valve manufacturing center, we are able to better offer actuator supply and automation capabilities to meet all customers as well as Fisher's valve automation requirements.

卓越的运营

艾默生阀门执行机构质量好、交货时间短的声誉已经稳定的持续了多年。在延续公司以客户为中心的战略、为客户提供最佳服务和最优产品的同时，艾默生位于中国天津，武清开发区的阀门自动化制造中心正在实施精益化生产。

我们对精益化生产的持续关注是我们整个生产制造战略的一部分，也是我们经营管理产品开发、操作、供应以及客户关系的基础。



由于我们临近费希尔阀门的生产中心，我们能够供应满足所有费希尔阀门要求的执行机构和阀门自动化。



1 FORCE DRIVING ALL VALVES ... EVERYWHERE

Our Vision

- First-in-class products.
- Operating as one company.
- Respected as the market leader.
- Chosen for delivering value.
- Earned from exceptional performance.

我们的目标

- 一流的产品。
- 一体化运作公司。
- 公认的市场领导者。
- 公认的价值提供者。
- 业绩源自卓越的产品性能。

This facility focuses on producing Bettis series products to meet our global market demand.

Bettis, a key brand well established in the valve actuation business is utilized in almost every energy-related industry. Today the actuator range includes linear, quarter-turn scotch-yoke, rack and pinion and electric options powered by compressed gas, hydraulic and electric sources satisfying a vast range of automation requirements.

我们的阀门自动化工厂主要生产Bettis系列产品，用于满足全球市场的需求。

Bettis，作为我们在阀门执行机构行业的知名品牌，几乎用于所有和耗能有关的行业。目前其执行机构种类包括线性、1/4转拨叉式、齿轮齿条式，以及由压缩气体、液压或电力驱动的电动型号，可满足诸多范围内的自动化要求。

Emerson's Valve Automation Manufacturing & Technology Center 艾默生阀门自动化制造和技术中心



Technology Leadership

Our expertise and leading edge technology play a key role in the Emerson strategy of combining superior products and technology with industry-specific engineering, consulting, project management and maintenance services.

Each innovation developed and each new product or service that we create is introduced with the sole purpose of ensuring that our customers are fully prepared to meet emerging technology and industry requirements.

Our planned purpose-built technology center focusing on configuration engineering, product design, new product development and local production support emphasizes our commitment to this vital market, with its location showing our devotion to this region.

The center will provide automation and support services, warranty repairs, project start-up and commissioning services including unrivalled training to support our valued customers in China.



领先的技术

在艾默生将卓越的产品技术与特定行业的设计制造、咨询、项目管理以及维修服务相结合的战略当中，我们的专家和领先的技术扮演了关键的角色。

我们每一项新技术的开发和每种新产品的问世的唯一目的，就是确保我们的客户完全准备好迎接新的技术和行业的要求。

我们已计划创建的特定用途的技术中心将重点关注结构选型、产品设计、新产品开发和本地生产支持，它的建立体现出我们对这一重要市场的承诺和对此领域的热情。

该中心将向艾默生尊贵的中国客户提供保修、服务支持、项目开车和调试服务，以及客户培训服务。



© Emerson Process Management 2008 All Rights Reserved.

Fisher, FisherFAST, Bettis, Dantorque, El-O-Matic, FieldQ, Hytork and Shafer are marks owned by one of the companies in the Emerson Process Management business division of Emerson Electric Co. Emerson and the Emerson logo are trademarks and service marks of Emerson Electric Co. All other marks are the property of their respective owners.

The contents of this publication are presented for information purposes only, and while every effort has been made to ensure their accuracy they are not to be construed as warranties or guarantees, express or implied, regarding the products or services described herein or their use or applicability. All sales are governed by our terms and conditions, which are available upon request.

We reserve the right to modify or improve the designs or specifications of such products and services at any time without notice. Neither Emerson, Emerson Process Management, Fisher, nor any of their affiliated entities assumes responsibility for the selection, use and maintenance of any product. Responsibility for the selection, use and maintenance of any product remains with the purchaser and end-user.

No part of this publication may be produced without prior permission.

© 艾默生过程管理 2008 版权所有

Fisher, FisherFAST, Bettis, Dantorque, El-O-Matic, FieldQ, Hytork和Shafer 标志为艾默生电气艾默生过程管理分公司旗下的各公司所拥有。艾默生及艾默生标识被作为艾默生电气公司的商标及服务标志。其它标记是其各自的拥有者的财产。

本出版物的内容仅供参考而已。尽管我们尽一切努力确保内容的准确性，但这些内容不应被看作是对本出版物所介绍的产品或服务、或者它们的使用或适用性的或明或暗的证明或担保。所有的销售都受制于我们的条件和条款，如有要求我们可以提供。

我们保留在任何时候修改或改进该产品的设计或规格而无需通知各方的权利。艾默生、艾默生过程管理和费希尔公司及其关联实体均不承担对任何产品的选型、使用或维护的责任。任何对费希尔产品的正确选型、使用和维护的责任只能由购买方和最终用户单独承担。

未得到事先允许该出版物的任何部分不得被拷贝。

**Manufacturing and Technology Center
Emerson Process Management (Tianjin)
Valves Co., Ltd.**

No. 15 Xing Wang Road,
Wuqing Development Area,
Tianjin 301700,
P.R. China
T: (86) 22 8212 3300
F: (86) 22 8212 3308

制造和技术中心
艾默生过程管理（天津）阀门有限公司
天津市武清开发区兴旺路15号
邮政编码 301700
中国
电话: (86) 22 8212 3300
传真: (86) 22 8212 3308
<http://www.EmersonProcess.com.cn>

**Sales Office
Emerson Process Management Co., Ltd.**

13th Floor Gateway Building
No. 10 Ya Bao Road,
Chaoyang District,
Beijing 100020,
P.R. China
T: (86) 10 5821 1188
F: (86) 10 5821 1100

销售办事处
艾默生过程控制有限公司
北京市朝阳区雅宝路10号
凯威大厦13层
邮政编码 100020
中国
电话: (86) 10 5821 1188
传真: (86) 10 5821 1100
<http://www.EmersonProcess.com.cn>