

AMS[®] ValveLink[®] Software Signature Series Performance Testing

AMS[®] ValveLink[®] Software Signature Series factory-executed performance testing (shown in figure 1), available for any Fisher[®] control valve assembly that includes a FIELDVUE[®] digital valve controller, can be used as the starting point in your control valve maintenance program.

Signature Series performance testing creates a benchmark of an assembled valve's performance just prior to shipment. This benchmark provides a starting point for future data comparison, enabling you to track the operating condition of your control valve and maximize valve performance.

Diagnostic Capability

AMS[®] ValveLink[®] Software

When ordered with your FIELDVUE equipped control valve, our factory uses the diagnostic capability of AMS ValveLink Software to thoroughly test each valve assembly as part of its final assembly.

ValveLink Software is available in the following configurations; AMS ValveLink SNAP-ON[™], ValveLink Solo, and ValveLink PLUG-IN for PRM.

FlowScanner[™] Valve Diagnostic System

In those instances where Signature Series data is desired, but the control valve does not include a FIELDVUE instrument, you can rely on the FlowScanner[™] Diagnostic System to gather the



W9363-3

Figure 1. Start Your Control Valve Maintenance Program with Signature Series Performance Testing

maintenance data you need. The FlowScanner system is a portable, in-the-field method to investigate the operating condition of a control valve. Our factory uses the FlowScanner to provide Signature Series testing for all valves that do not include FIELDVUE instrumentation.

Operating Signature

We call this benchmark the valve's operating signature. You can use this signature as the starting point in later valve diagnostics to determine if any performance degradation has occurred.

Test Levels

Three levels of Signature Series tests are available, with each level providing valuable diagnostic data. When you order a Signature Series test, you will receive the test results electronically from your Emerson Process Management[™] sales office.



Signature Series Performance Testing

Data Comparison

If your control valve is equipped with a FIELDVUE instrument that includes diagnostic capability, after the valve has been in service you can use ValveLink Software to run the same tests that were originally run at the factory. Then, by importing the Signature Series data into ValveLink Software you can compare the as-shipped performance with the valve's current operating condition. The current data can be compared to the baseline data to quickly pinpoint issues, as shown in figure 2.

The Signature Series Lineup

Signature Series 1

Within the Signature Series 1 test level, you receive:

- Instrument Configuration Display
- Status Monitor (50% travel)
- Valve Spec Sheet
- Valve Signature, as recorded from -5 to 105% input (scan time for this test depends on actuator size).
- Dynamic Error Band Curve, as recorded from -5 to 105% input (scan time for this test depends on actuator size).
- Drive Signal, as recorded from -5 to 105% input (scan time for this test depends on actuator size).
- Signature Series test results electronically from your Emerson Process Management sales office.

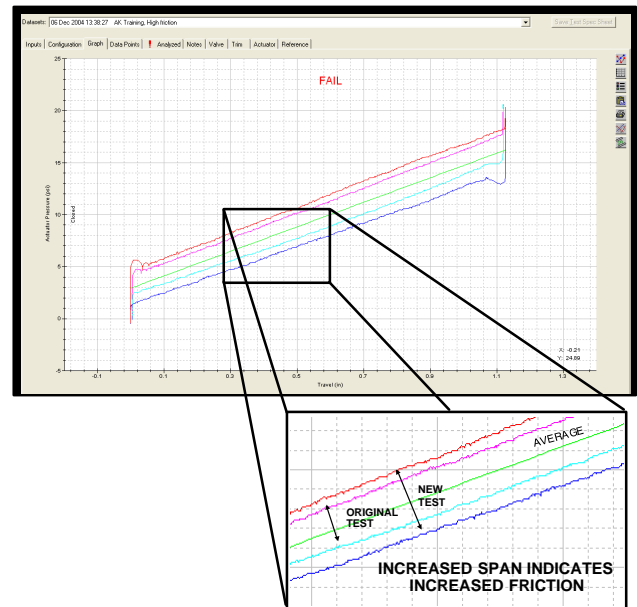


Figure 2. Data Comparison

Signature Series 2

In addition to Signature Series 1 information, you receive:

- Performance Step Test
- Status Monitor (0, 25, 50, 75, 100%)
- Signature Series test results electronically from your Emerson Process Management sales office.

Signature Series 3

Series 3 testing provides user specified Series 1 and 2 tests and allows any change in end points or scan times. This capability lets you tailor the testing to your specific requirements or process needs.

Signature Series Availability

Signature Series testing is available for all Fisher control valves when specified as part of the original valve order. To order Signature Series testing, simply specify your Signature Series testing requirements on your Fisher control valve orders. Signature Series tests will not be available if not specified as part of the original valve order.

Take Advantage of the Signature Series

You can begin to take advantage of the Signature Series by contacting your Emerson Process Management sales office. Remember to specify your Signature Series testing requirements when placing your order. Emerson Process Management can provide you with the diagnostic data you need to keep your valves operating at top performance!

Note

Neither Emerson, Emerson Process Management, nor any of their affiliated entities assumes responsibility for the selection, use, or maintenance of any product. Responsibility for the selection, use, and maintenance of any product remains with the purchaser and end-user.

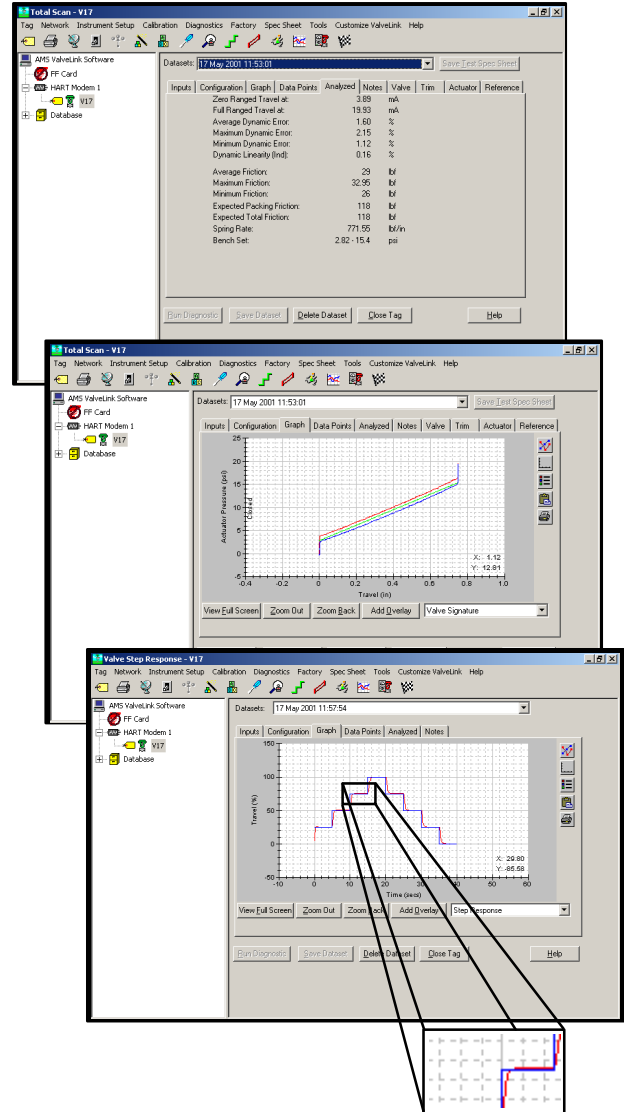


Figure 3. Performing a Diagnostic Test with AMS® ValveLink® Software Provides an Analysis of Control Valve Operating Parameters

Signature Series Performance Testing

Product Bulletin

62.1:Signature
April 2008

FIELDVUE, FlowScanner, ValveLink, SNAP-ON, and Fisher are marks owned by Fisher Controls International LLC, a member of the Emerson Process Management business division of Emerson Electric Co. AMS is a mark owned by one of the companies in the Emerson Process Management business division of Emerson Electric Co. Emerson Process Management, Emerson, and the Emerson logo are trademarks and service marks of Emerson Electric Co. All other marks are the property of their respective owners.

The contents of this publication are presented for informational purposes only, and while every effort has been made to ensure their accuracy, they are not to be construed as warranties or guarantees, express or implied, regarding the products or services described herein or their use or applicability. We reserve the right to modify or improve the designs or specifications of such products at any time without notice.

Neither Emerson, Emerson Process Management, nor any of their affiliated entities assumes responsibility for the selection, use and maintenance of any product. Responsibility for the selection, use and maintenance of any product remains with the purchaser and end-user.

Emerson Process Management

Marshalltown, Iowa 50158 USA

Sorocaba, 18087 Brazil

Chatham, Kent ME4 4QZ UK

Dubai, United Arab Emirates

Singapore 128461 Singapore

www.Fisher.com

