

## Trust your repairs to the leader in control valve technology.

- *Improve your uptime*
- *Get quick turnaround*
- *Locate hard-to-find replacement valves and parts*

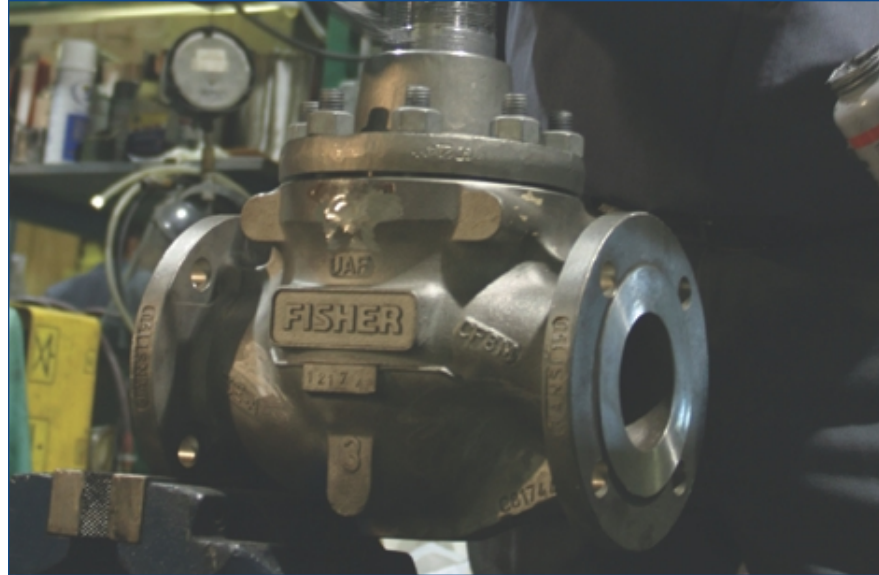


*Expert repair performed by factory-trained and -certified technicians.*

Whether you're just starting up a process, currently in operation, or trying to keep old and outdated equipment working efficiently, Emerson's Instrument & Valve Services is the partner you can trust for expert repair of process control valves.

We service all installed valves, regardless of manufacture, with consistent procedures, benchmarking, and quality metrics. And we're the only supplier in North America that offers coast-to-coast coverage.

All our technicians are factory trained and participate in continuing education and certification programs, enabling them to deliver only the highest quality of expertise to every customer.



**Fisher® valves**

**We fix them right the first time, every time.**

Our service centers are the only factory authorized repair facilities in North America for Fisher control valves. With more than 40 locations, we're also the only source with coast-to-coast coverage, enabling us to respond to your repair needs quickly and efficiently.

When you send a Fisher control valve to Emerson's Instrument & Valve Services, you'll get a cleaned, working valve back quickly.

You'll find that our range of repair services is second to none in scope and quality.

Our technicians will:

- Physically inspect the valve
- Perform diagnostic tests
- Check seat pressure
- Check packing
- Remove valve and inspect
- Clean mechanical valve parts down to bare metal
- Determine what parts are needed and estimate repair costs
- Complete the actual repair
- Perform tests to make sure the valve is performing at factory standards

For a functional repair, our technicians will:

- Check linkages

- Calibrate the instrument
- Check stroking—full open/full close
- Conduct signature valve test with our FlowScanner™ system

**OEM control valves**

**No matter who makes it, we can service it.**

Chances are your plant isn't comprised entirely of valves made by the same manufacturer. When your valve assets need repair, you can save a lot of time and expense by dealing with one full service provider.

Choose a control valve expert who has both the service breadth and technical depth to reliably repair every valve in your plant.

When you send your OEM control valve to Emerson's Instrument & Valve Services, we will fully repair it on time and within budget, following the same strict procedures and high quality standards we employ when repairing Fisher valves. Further, we back our workmanship with a one-year guarantee, as applicable through Emerson's Instrument & Valve Services warranty program.



Need OEM control valve parts? We use and supply parts that are equal to the same standards as Fisher parts. The process of reverse engineering replacement parts includes:

- Analyzing for correct part material identification and condition
- Measuring and documenting critical dimensions with our coordinate measurement machine (CMM)
- Producing the part with controlled manufacturing and refurbishing standards to ensure traceability and tolerance repeatability

**Encore® remanufactured valves**

**Repaired, reconditioned, and ready to go.**

You need a valve and you need it now. You don't have a backup unit in inventory, so the next best solution is an instant repair. Every hour offline is costing the company money.

What do you do? Have your local sales office specify a ready-to-install remanufactured valve as a replacement for what you have inline today.

That's the value of our Instant Repair service via our Encore program. We'll have your replacement valve on site prior to your scheduled workday, ready to

swap out before you break into the line. Simply return the old valve to us at your convenience.

You can rest assured that your Encore remanufactured control valve will deliver the same performance and reliability you've come to associate with Emerson Process Management. Only Encore can offer a true OEM quality remanufactured product.

Our broad selection of more than 12,000 Encore valves is maintained on CoreTracker, a real-time database that enables Quick Ship service to our "on call" teams, who are available 24 hours a day, 7 days a week, 365 days a year for your emergency needs.



## Expect only the best from Emerson's Instrument & Valve Services.

Every control valve we service—and every customer we serve—receives our highest level of attention and workmanship. We have services, standards, and best practices in place to ensure that your control valve issues are resolved quickly and expertly. For example:

### Valve Diagnostic Tools

We use a full set of diagnostic tools, including FlowScanner, AMS™ Suite: Intelligent Device Manager, and AMS ValveLink®.

These tools enable the storage of your valve's repair history within an asset management database, helping you eliminate unplanned maintenance. Using our diagnostic toolset, we can offer preventive and predictive solutions to all your plant-critical

valve applications. As a routine part of this service offering we apply the proven engineering and product expertise of the Emerson Process Management Network.

### Onsite Repairs

With our onsite repair program, our technicians will diagnose and analyze your valve inline, and then propose which repairs would be best for its situation. Our inline repair capabilities include welding, heat treatment, and machining. We'll do the repair and have your valve functioning properly on time.

### Industry Leading Standards

Emerson's Instrument & Valve service centers operate under a national quality management system that assures consistent process control from order entry through final product inspection and shipment. Factory-trained technicians use procedures developed to industry standards,

NIST traceable measuring, and test equipment and qualified material suppliers. Fisher® engineering support assures that the highest quality standards will go into the repair of every control valve.

### Coast-to-Coast Service

Only Emerson's Instrument & Valve Services offers repair capabilities nationwide. With more than 40 locations throughout North America and our factory-trained technicians, we can provide you quality, timely, cost effective valve repair any time, any place. You can be assured that your Emerson Process Management sales representative will offer you a truly flexible, always reliable maintenance solution.

So, the next time a control valve needs repair, contact Emerson's Instrument & Valve Services, the undisputed leader in control valve expertise.

*For more information or to schedule service, please call your local Emerson Process Management sales representative or the North American Response Center at **1-800-654-7768**.*

### Emerson Process Management

Instrument & Valve Services Company  
205 South Center Street  
Marshalltown, IA 50158

©2006, Emerson Process Management.

The contents of this publication are presented for informational purposes only, and while every effort has been made to ensure their accuracy, they are not to be construed as warranties or guarantees, express or implied, regarding the products or services described herein or their use or applicability. All sales are governed by our terms and conditions, which are available on request. We reserve the right to modify or improve the designs or specifications of our products at any time without notice.

AMS Suite, AMS ValveLink, Encore, FIELDVUE, Fisher, FlowScanner, MicroMotion and Rosemount are marks owned by subsidiaries and divisions of Emerson Process Management, a business division of Emerson Electric Co. Emerson Process Management, Emerson and the Emerson logo are trademarks and service marks of Emerson Electric Co.