

Reference Guide

D301656X412

April 2012

OpenEnterprise Active Poll List Builder Reference Guide (V2.83)

Remote Automation Solutions

Website: www.EmersonProcess.com/Remote



Contents

1	Active Poll List Builder	1
1.1	OpenEnterprise Data Collection	1
1.2	Command Line Parameters	1
1.3	APB Diagram	2
1.4	Main Dialog	2
1.4.1	Database	3
1.4.2	Database connection status	3
1.4.3	Event Type List	3
1.4.4	Event Category List	4
1.4.5	Object Filter	4
1.4.6	New Events Flag	4
1.4.7	Events List	4
2	Index	6

1 Active Poll List Builder

OpenEnterprise has an OPC Server for Network 3000 and ControlWave devices. Data being requested by OPC clients, referred to as 'active' data, can be requested from the device at a faster rate than normal. The Active Poll List Builder is responsible for maintaining data collection for active data.

1.1 OpenEnterprise Data Collection

OpenEnterprise employs two main methods of collecting data from a device:

- Template (Poll List)
- Report by Exception (RBE).

Under normal circumstances, every global signal within a device is collected by template or RBE. Typically, templates are collected at a fixed interval (according to a rate defined in the *dvi_schedule* table). Templates consist of a pre-built list of signal addresses and they are fairly static lists. They only need to be rebuilt following load version changes. This method of polled collection at a fixed rate can be thought of as background template collection. Background polling rates are set at an optimum rate that doesn't place a strain on the network.

However, when an OPC Client requests data, a faster rate of collection may be required, and the Active Poll List Builder provides the necessary flexibility to do this. The APB creates a temporary poll list for the requested data that polls the device at a faster rate than the background polling rate.

Active Polling is not enabled by default for OpenEnterprise systems. If Active Polling is required, it must be enabled by:-

- Setting the tables that will be monitored for query activity (use the Data Query Monitor Config Tool)
- Enabling required devices for Active Template collection (use the NW3000 Advanced Config Tool)
- Setting the Active Poll List Builder to run as part of the OpenEnterprise session (use Session Manager)

1.2 Command Line Parameters

Command line parameters can be used to specify the username and password via the command line in the following manner:

```
Nw3000ActiveQueryMonitor.exe -s[dataservice] -u[username] -p[password]
```

where

-s is used to define the dataservice.

-u is used to define the username.

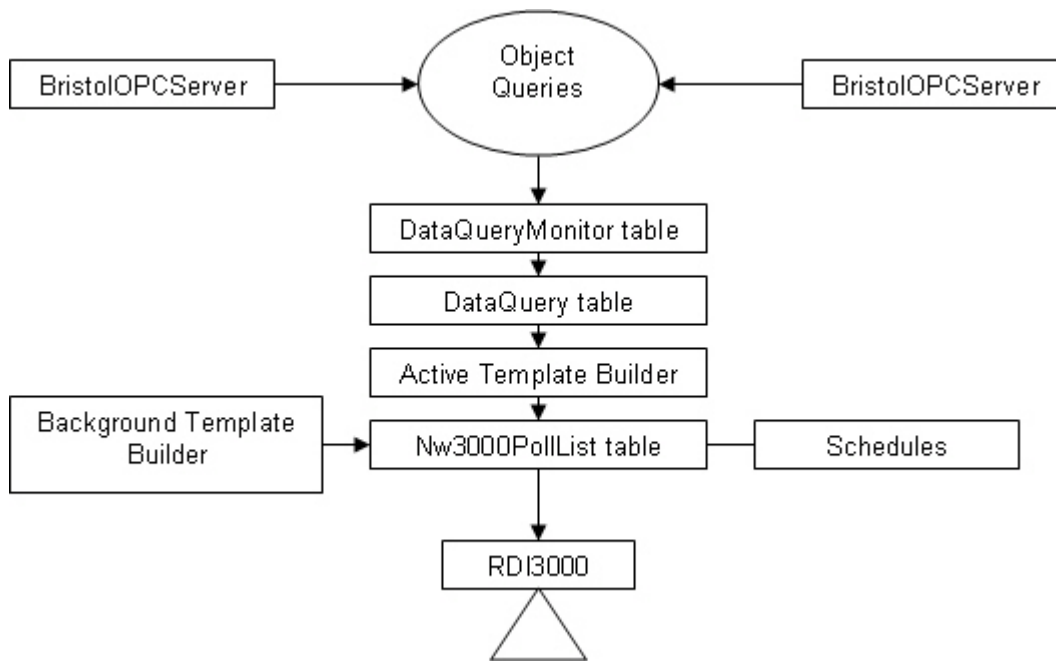
-p is used to define the password.

The default value for dataservice will be "rtrdb1". If no username and password are specified, the values will be obtained from ServerAdminSecurity.

1.3 APB Diagram

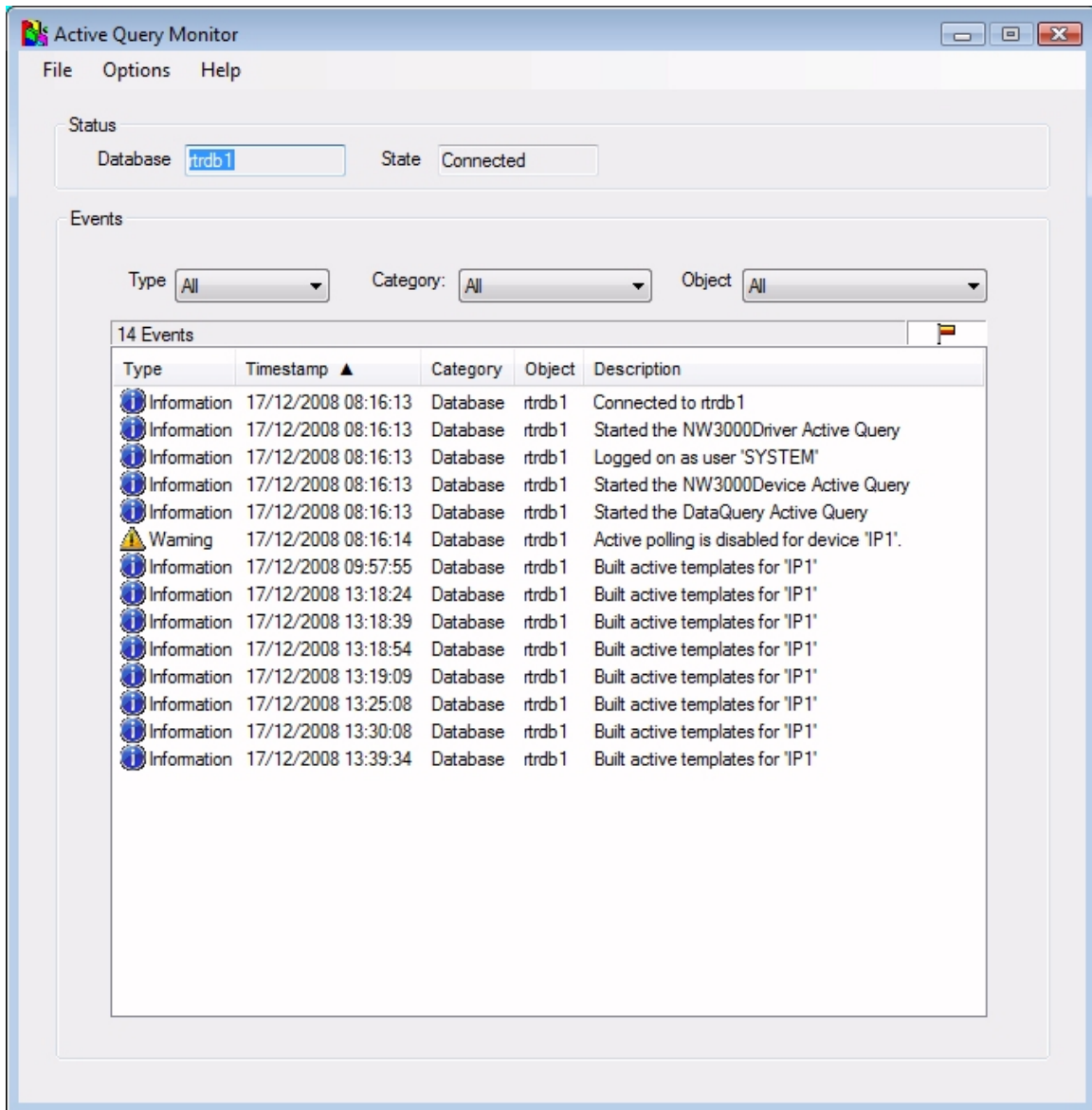
The Active Poll List Builder (APB) monitors the *dataquery* table for evidence of any active object queries from OPC Client programs (these will be typically using the *Bristol OPC Server*). If the APB finds that active object queries exist for network3000 or ControlWave signals, it will create temporary poll lists (called active poll lists) that will collect the data requested at a faster rate than background templates.

These active poll lists are created only for the time that the active object queries exist, and only for the objects that are being requested. When the data is no longer being requested by the client program, the temporary active poll list is deleted and collection will revert back to background collection only. However, during the time that the data is being actively requested, the data for the objects will be collected at both the active rate and the background rate.



1.4 Main Dialog

The Active Template Builder main dialog displays database connection status and events relating to active template building.



1.4.1 Database

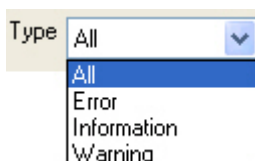
This is the data service that the Active Poll List Builder is attempting to connect to. It is defined by a string in the form <ServerName>:<ServiceName> (i.e. Server1:rtrdb1).

When connecting to a local database, the <ServerName> and following colon are not required. The <ServiceName> is 'rtrdb1' by default.

1.4.2 Database connection status

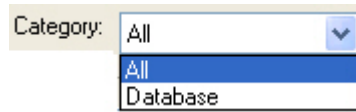
Tells you whether or not the Active Poll List Builder is connected to the database.

1.4.3 Event Type List



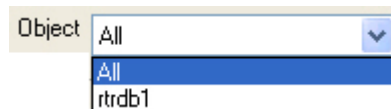
This control contains a list of event types that can be used to filter the Events List.

1.4.4 Event Category List



This control contains a list of event categories that can be used to filter the Events List.

1.4.5 Object Filter



This list can be used to filter the Events List according to object.

1.4.6 New Events Flag



The presence of this flag in the top right corner of the Events List indicates that new events have occurred. Click the flag to view these new events in the Events List.

1.4.7 Events List

Type	Timestamp ▲	Categ...	Object	Description
Information	18/11/2008 08:47:00	Database	rtrdb1	Connected to rtrdb1
Information	18/11/2008 08:47:00	Database	rtrdb1	Started the NW3000Driver Active Query
Information	18/11/2008 08:47:00	Database	rtrdb1	Logged on as user 'SYSTEM'
Information	18/11/2008 08:47:00	Database	rtrdb1	Started the NW3000Device Active Query
Information	18/11/2008 08:47:00	Database	rtrdb1	Started the DataQuery Active Query
Information	18/11/2008 08:47:04	Database	rtrdb1	Built active templates for 'CW1'
Information	18/11/2008 08:47:04	Database	rtrdb1	Built active templates for 'IP1'
Information	18/11/2008 08:50:55	Database	rtrdb1	Built active templates for 'IP1'
Information	18/11/2008 08:52:19	Database	rtrdb1	Built active templates for 'IP1'
Information	18/11/2008 08:53:21	Database	rtrdb1	Built active templates for 'IP1'
Information	18/11/2008 08:53:36	Database	rtrdb1	Built active templates for 'IP1'
Information	18/11/2008 08:53:51	Database	rtrdb1	Built active templates for 'IP1'
Information	18/11/2008 08:54:06	Database	rtrdb1	Built active templates for 'IP1'
Information	18/11/2008 08:54:21	Database	rtrdb1	Built active templates for 'IP1'
Information	18/11/2008 08:54:36	Database	rtrdb1	Built active templates for 'IP1'
Information	18/11/2008 08:54:51	Database	rtrdb1	Built active templates for 'IP1'
Information	18/11/2008 08:55:07	Database	rtrdb1	Built active templates for 'IP1'
Information	18/11/2008 08:55:22	Database	rtrdb1	Built active templates for 'IP1'
Information	18/11/2008 08:55:37	Database	rtrdb1	Built active templates for 'IP1'
Information	18/11/2008 08:55:52	Database	rtrdb1	Built active templates for 'IP1'
Information	18/11/2008 08:56:07	Database	rtrdb1	Built active templates for 'IP1'
Information	18/11/2008 08:56:22	Database	rtrdb1	Built active templates for 'IP1'
Information	18/11/2008 08:56:37	Database	rtrdb1	Built active templates for 'IP1'

Reference Guide

D301656X412

April 2012

Active Poll List Builder

The Events List shows all events that have happened since the Active Template Builder started. The number of events is displayed in the top left corner. The event flag in the top right corner indicates that new events have occurred, and if selected, causes the events to be displayed in the list. The flag is only visible when new events occur.

2 Index

A

Active Poll List Builder Overview 3

APB Diagram 4

D

Database 5

Database connection status 5

E

Event Category Filter 6

Event Type Filter 5

Events List 6

M

Main Dialog 4

N

New Events Flag 6

O

Object Filter 6

Reference Guide

D301656X412

April 2012

DISCLAIMER

Bristol, Inc., Bristol Babcock Ltd, Bristol Canada, BBI SA de CV and the Flow Computer Division, are wholly owned subsidiaries of Emerson Electric Co. doing business as Remote Automation Solutions ("RAS"), a division of Emerson Process Management. ROC, FloBoss, ROCLINK, Bristol, Bristol Babcock, ControlWave, TeleFlow and Helicoid are trademarks of RAS. AMS, PlantWeb and the PlantWeb logo are marks of Emerson Electric Co. The Emerson logo is a trademark and service mark of the Emerson Electric Co. All other marks are property of their respective owners.

The contents of this publication are presented for informational purposes only. While every effort has been made to ensure informational accuracy, they are not to be construed as warranties or guarantees, express or implied, regarding the products or services described herein or their use or applicability. RAS reserves the right to modify or improve the designs or specifications of such products at any time without notice. All sales are governed by RAS' terms and conditions which are available upon request. RAS does not assume responsibility for the selection, use or maintenance of any product. Responsibility for proper selection, use and maintenance of any RAS product remains solely with the purchaser and end-user.

Engineered and supported by:

Remote Automation Solutions,

Blackpole Road, Worcester, WR3 8YB, UK

Registered office: Meridian East, Leicester, LE19 1UX

Registered in England and Wales, Registration No. 00671801

VAT Reg No. GB 705 353 652

Emerson Process Management
Remote Automation Solutions
1100 Buckingham St
Watertown, CT 06795
T 1 (860) 945 2200
F 1 (860) 945 2278
www.EmersonProcess.com/Remote
binfo@EmersonProcess.com

Emerson Process Management
Remote Automation Solutions
Blackpole Road
Worcester, WR3 8YB
T 44 (0) 1905 856848
F 44 (0) 1905 856930
www.EmersonProcess.com/Remote
oedsupport@EmersonProcess.com

