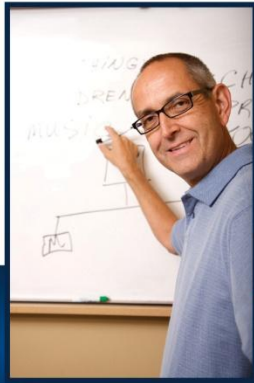


Emerson's Virtual Classroom



Connect from anywhere to Emerson's Virtual Classroom to receive live, instructor led training without the cost and inconvenience of travel.

- Convenient training from work or home.
- Savings by eliminating travel
- Factory certified instructors
- Course content flexibility

Emerson facilitates your hands-on, learn by doing experience by connecting students directly to a system located in a factory classroom using the GoToMyPC technology.

Utilize Emerson's virtual classroom capability to achieve outstanding results without the costs typically associated with factory based training.

Introduction

Emerson's Virtual Classroom delivers traditional courseware from certified instructors with access to fully functional DeltaV systems via the internet. Now you can garner the benefits of Emerson's training without leaving your office or home!

Emerson uses Adobe® and GoToMyPC® technology to provide a rich training environment that is easy to use. Emerson's certified Instructors deliver the curriculum through the Adobe Connect meeting room with full audio and video support. You can pose questions directly to the instructor or share them with the entire classroom.

"I could sit at home and work on the course... and I didn't have to deal with the hassle of travelling" Control Systems Technician

"I would definitely recommend taking a virtual course to others." Process Control Engineer

Benefits

Convenient: Accomplish your training from work, home or anywhere with an internet connection. With Emerson's Virtual Classroom you have access to your systems, instructors and curriculum from anywhere in the world. Imagine taking a class from the comfort of your home without the lost time and hassles of travel, airports and hotels.

Having the training you need, when you need it, without travel is very convenient. You have enough to worry about without adding unnecessary travel, lodging and logistics to your training needs.

Savings: Today everyone is looking for best cost options without sacrificing quality. Emerson provides the same curriculum from the same professional staff on the same systems you would use if you were taking the class at the factory school. The only difference, you'll realize a significant savings and have the option of attending class in your pajamas... Don't worry, we won't tell the boss.

Your time is much too valuable to waste it in an airport. Wouldn't you rather be home to enjoy evenings with your family rather than sleeping in a hotel bed? Aside from cost savings imagine having all that travel and evening time while taking the same award winning training from Emerson.

Quality Instruction: Emerson's Factory certified instructors lead every class using the same learn by doing methodologies. Because each student has access to a system, they can participate in workshops, explore and experiment. Students can also think longer about what they want to say and add their comments when ready.

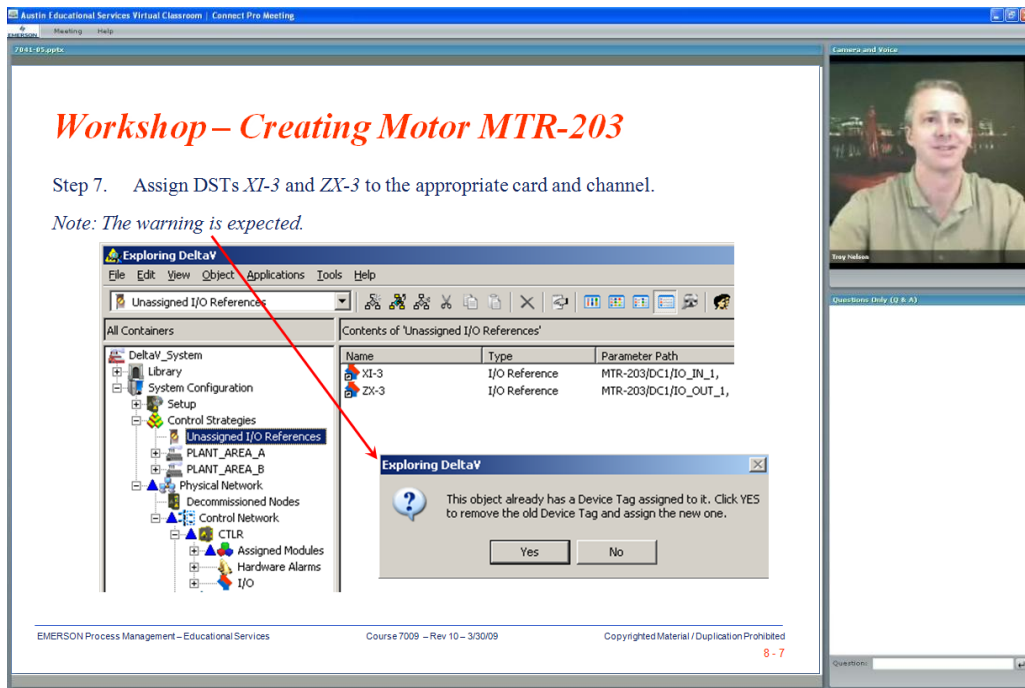
Studies show that when a trainee learns in the same environment in which they work, knowledge retention increases. If you train in the same location you apply the knowledge you'll see a better retention and application.

Content flexibility: Because the classes originate from the factory, you have greater flexibility in defining special or custom content to suit your training needs. Emerson's Virtual Classroom facilitates multiple subject matter expert availability from one location.

How the Virtual Classroom works

Emerson's Virtual Classroom works through the use of web conferencing software and a live professional instructor to bring the classroom to your location. Emerson utilizes the Adobe Connect Pro environment to deliver course content, direct chat, video and audio to your desk top. GoToMyPC connects you directly with the system located in the Emerson lab used during the course.

Courses are delivered by Emerson's certified instructors and contain identical content to the 'on-site' or factory schools. The only thing missing is lunch and travel cost.



Educational Services instructor delivering curriculum via the Adobe web conferencing software .

Virtual Classroom Features

Features	
Instructor Led	X
Individual DeltaV System	X
Professional Curriculum	X
Home @ night	X
Attend from anywhere	X
Customize Content	X
No travel hassles	X
Best Cost Option	X
Course content flexibility	X

Requirements to Connect to the Virtual Classroom

- An audio-enabled computer.
- A minimum screen resolution of 1024 x 768.
- Intel Pentium® 4 with 2.5 GHz or faster processor.
- 2 GB of RAM.
- Web Browser: Internet Explorer 7 or higher.
- Adobe Flash Player 8 or later.
- Support for Java or ActiveX within a web browser, and the latest version of Java installed.
- Reliable high-speed (DSL or higher) Internet connection (a wired Internet connection preferable).

- Ability to launch an Adobe Connect meeting room.
- Access to GotoMyPC.com

For details go to:

<http://www.emersonprocess.com/VirtualClassroomRequirements>

Available Courses

Course Number	Course Title
7009V	DeltaV Implementation I
7012V	DeltaV Operate Continuous
7014V	DeltaV Operate Batch
7016V	DeltaV Batch Implementation
7017V	DeltaV Implementation II
7025V	DeltaV Advanced Graphics
7041V	Simulation with MiMiC
7045V	Alarm Management DeltaV Analyze
7081V	Syncade Document Control and Archiving
7082V	Syncade Training and Development
7083V	Syncade Equipment Tracking
7084V	Syncade Materials, Inventory and Order Management
7095V	Syncade Suite Recipe Authoring 4.0
7201V	DeltaV Advanced Control
7202V	DeltaV Model Predictive Control
7305V	DeltaV SIS Implementation

Ordering Information

To enroll, contact Educational Services at 1-800-338-8158 or +1-641-754-3771 or email Education@emerson.com.

Find more details about Emerson's Virtual Classroom, class schedules and other training opportunities by visiting our Virtual Classroom website: <http://www.emersonprocess.com/VirtualClassroom>.

To locate a sales office near you, visit our website at:

www.EmersonProcess.com/DeltaV

Or call us at:

Asia Pacific: 65.777.8211

Europe, Middle East: 41.41.768.6111

North America, Latin America: +1 800.833.8314 or
+1 512.832.3774

For large power, water, and wastewater applications

contact Power and Water Solutions at:

www.EmersonProcess-powerwater.com

Or call us at:

Asia Pacific: 65.777.8211

Europe, Middle East, Africa: 48.22.630.2443

North America, Latin America: +1 412.963.4000

© Emerson Process Management 2010. All rights reserved. For Emerson Process Management trademarks and service marks, go to:
<http://www.emersonprocess.com/home/news/resources/marks.pdf>.

The contents of this publication are presented for informational purposes only, and while every effort has been made to ensure their accuracy, they are not to be construed as warranties or guarantees, express or implied, regarding the products or services described herein or their use or applicability. All sales are governed by our terms and conditions, which are available on request. We reserve the right to modify or improve the design or specification of such products at any time without notice.