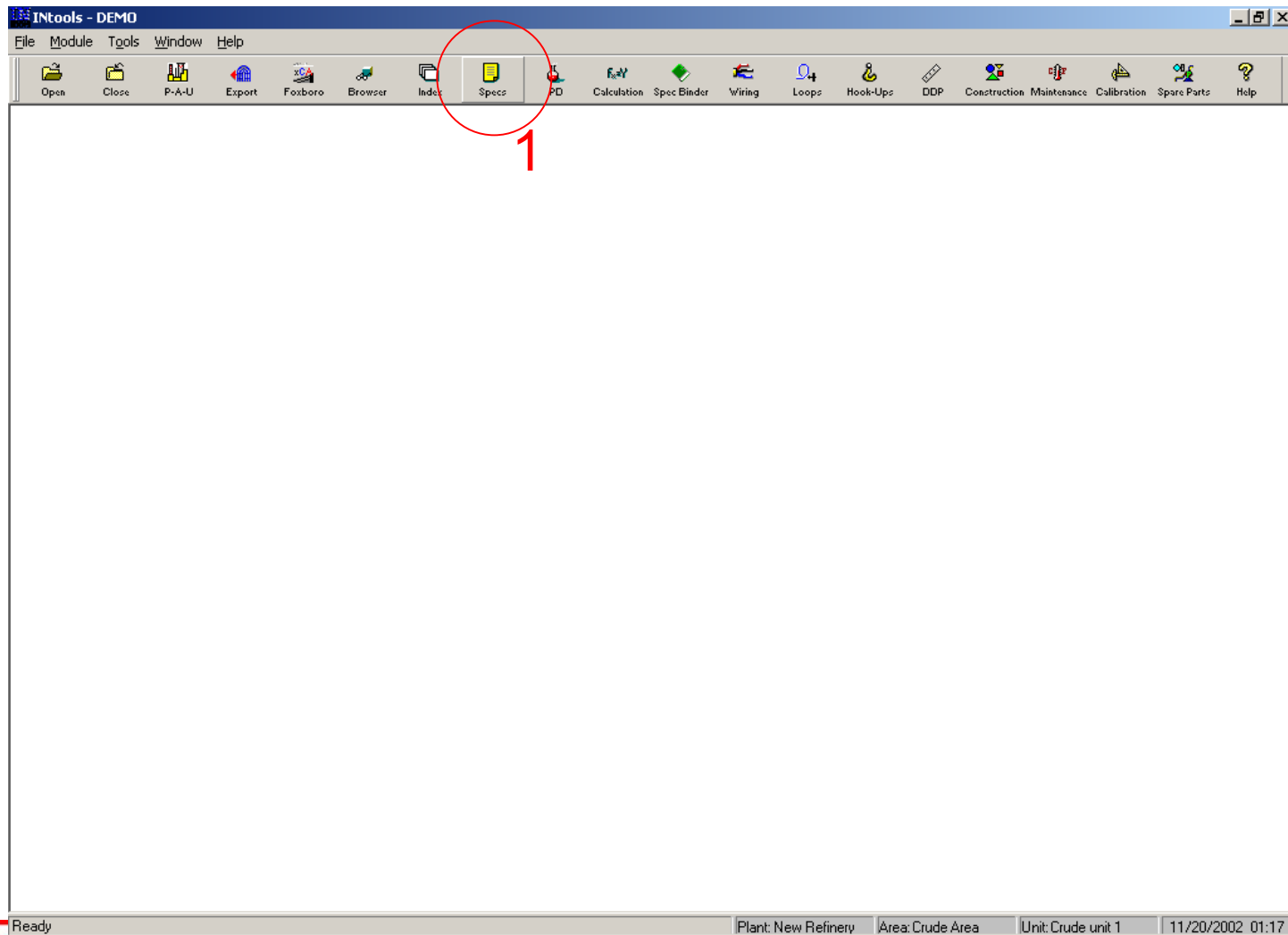


***What if I've installed
the FIRSTVUE
interface but spec
form 70 is not
available?***



Go to the Spec Module



Click on the Form Editor

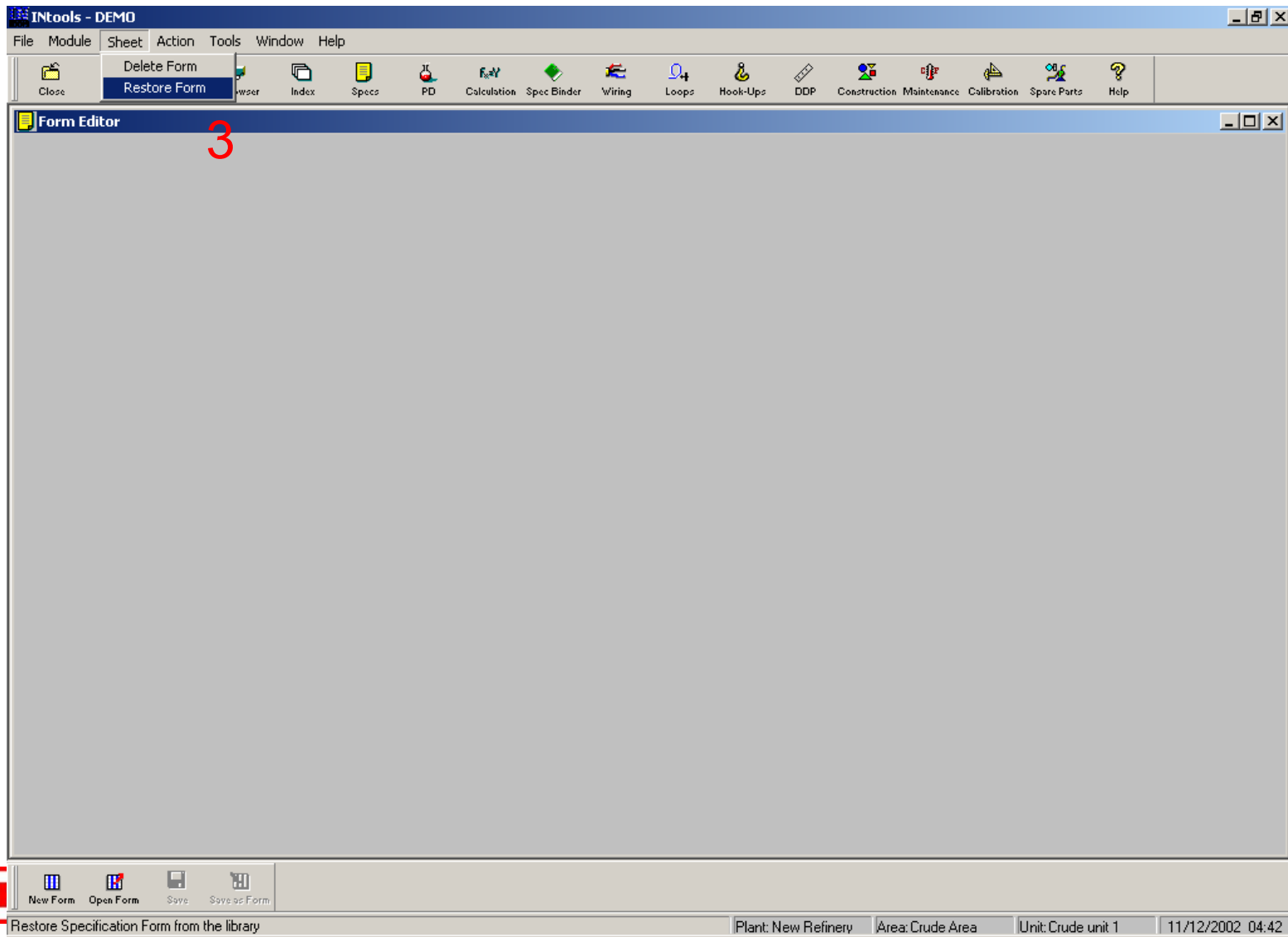
The screenshot displays the INtools - DEMO software interface. At the top, there is a menu bar with options: File, Module, Sheet, Custom, Action, Options, Tools, Window, and Help. Below the menu bar is a toolbar containing various icons for different functions such as Close, P-A-U, Export, Foxboro, Browser, Index, Specs, PD, Calculation, Spec Binder, Wiring, Loops, Hook-Ups, DDP, Construction, Maintenance, Calibration, Spare Parts, and Help.

In the center of the main workspace, a dialog box titled "Instrument Specifications" is open. It contains two text input fields: "Tag No." with the value "101- - /" and "Form No." which is empty. Below these fields are four buttons: "OK", "Cancel", "Search...", and "Help".

At the bottom of the interface, there is a secondary toolbar with icons for "Open", "Close", "Form Editor", "Page Editor", "Formats", and "Spec DD". The "Form Editor" icon is circled in red, and a large red number "2" is placed above it. Below this toolbar, a status bar shows the text "Edit Specification Forms" and "Form Editor".

On the right side of the status bar, there is a logo for "RSON Process management" and a timestamp "11/20/2002 01:18".

Select "Restore Form" from the "Sheet" menu item



Select / Restore form no. 70

4

5

6 (if needed)

7

Form No.	Form Name	Process Function	Notes
51	Smart Diff. Press. Transmitter	Pressure	
52	Temperature Switch	Temperature	
53	Turbine Flowmeter	Flow	
54	Vibration Monitor	General	
55	Conduct. Transmitt./Controller	General	
56	Diff. Pressure Instr. (flow)	Flow	
57	Diff. Pressure Instr. (level)	Level	
58	Smart Diff.Pres. Transm. (flow)	Flow	
59	Smart Diff.Pres. Transm.(level)	Level	
60	Orifice Plate style 2	Flow	
61	Restriction Orifice style 2	Flow	
62	Control Valve style 2	Control Valve	
63	Relief Valve style 2	Relief Valve	
64	Butterfly Valve style 2	Control Valve	
65	Diff. Press. Regulator style 2	Control Valve	
66	Emergency Block Valve style 2	Control Valve	
67	Special Globe Valve style 2	Control Valve	
68	Ball Valve style 2	Control Valve	
70	ISA Control Valve	Control Valve	

Search Form No.

Warning

Specification Form 70 ("ISA Control Valve") already exists and there are Specification Sheets that use it.

Overwrite it. 6 (if needed)

Restore it with another number :

OK Cancel Help