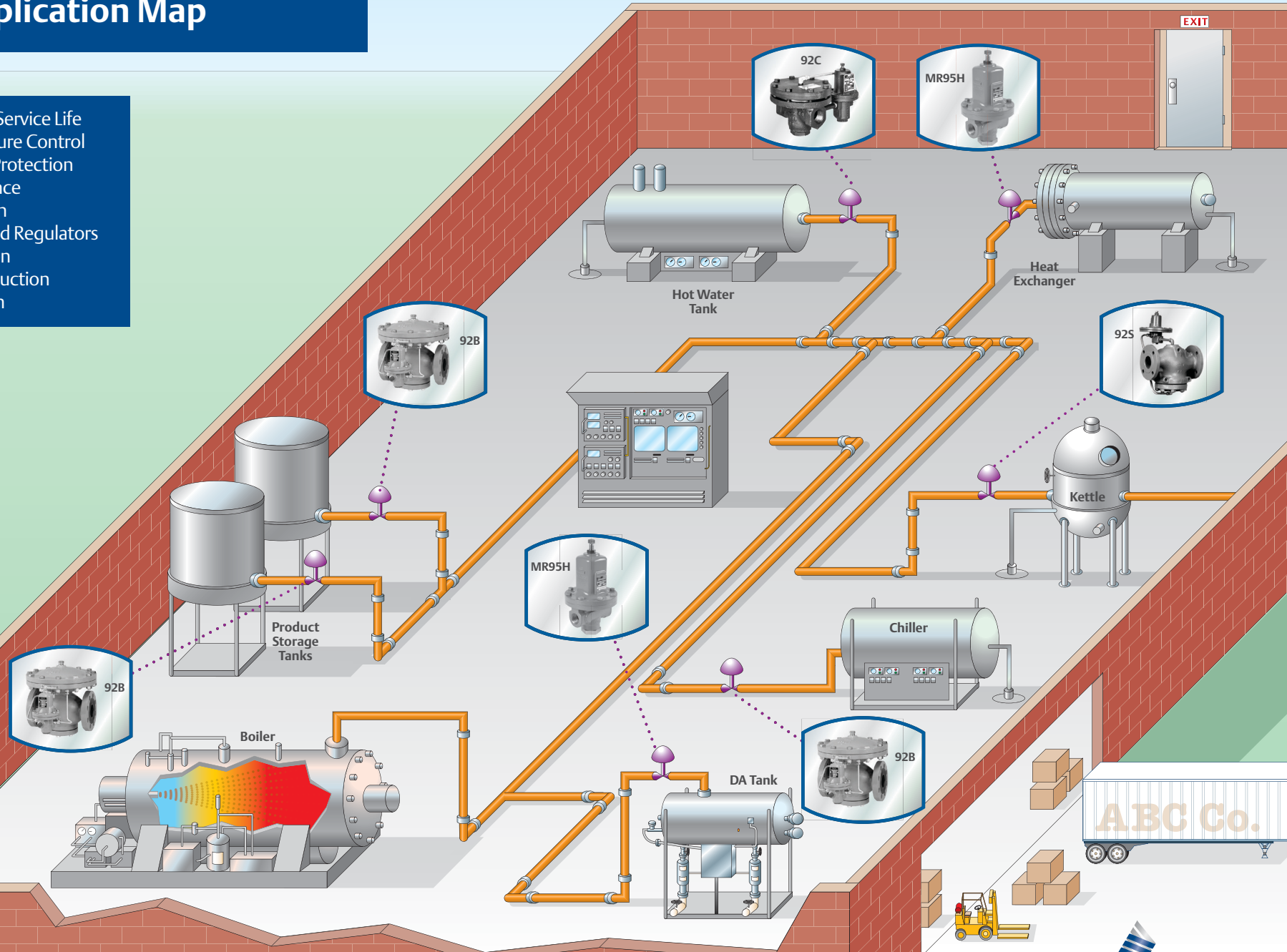


Steam Application Map

Features

- Reliable, Long Service Life
- Accurate Pressure Control
- Overpressure Protection
- Low Maintenance
- Superior Design
- Pressure Loaded Regulators
- Noise Reduction
- Rugged Construction
- High Turndown



FISHER™

D351352X012 © 2008, 2020 Emerson Process Management Regulator Technologies, Inc. All rights reserved. 05/20.
 The Emerson logo is a trademark and service mark of Emerson Electric Co. All other marks are the property of their prospective owners.
 Fisher™ is a mark owned by Fisher Controls International LLC, a business of Emerson Automation Solutions.

EMERSON™