

Fisher™ Emergency Shutoff Valves Trust The Original

Snappy Joe™ Shutoff Valves



Type N551 with
Type P539A

Type N551

Type N551 Emergency Shutoff Valve

MODELS

	Manual Actuator
1-1/4 in. NPT:	Type N551-10
2 in. NPT:	Type N551-16
3 in. NPT:	Type N551-24

SPECIFICATIONS

Maximum Inlet Pressure: 400 psig / 27.6 bar
Maximum Temperature Capability: 160°F / 71°C.
 All seats and seals use UL® tested materials rated for -40°F / -40°C
Propane Flow at 2 psid / 0.14 bar d:
 Type N551-10: 150 gpm / 568 l/min
 Type N551-16: 295 gpm / 1117 l/min
 Type N551-24: 850 gpm / 3127 l/min

OPTIONS

Seat Discs

Standard disc and O-ring material is Nitrile (NBR).
 Viton® and Kalrez® available.

Operation Methods

Manual/Cable Pull	Standard (add P164B)
Air Close	P327D Actuator
Air Open-Close	P539A Actuator

Viton® and Kalrez® are marks owned by E.I. Du Pont de Nemours and Co.
 UL® is a mark owned by Underwriters Laboratories.

Type N550 is Now Type N551

The trusted Fisher Type N550 shutoff valve is known by the LPG industry to provide maximum full-port flow performance and low-cost of ownership. The Type N551 builds on the foundation of performance and value and adds improved gland and sealing durability and simplified maintenance.

Type N551 Emergency Shutoff Valve

Type N551 emergency shutoff valve is intended for in-line use on LPG or Anhydrous Ammonia (NH₃) service. The valves may be installed on both ends of transfer hoses where the hose connects the bulk plant piping to the bobtail, transport or tank car. The Type N551 provides a quick way of shutting off gas flow in the event of a hose rupture.

FISHER™


EMERSON™

PERFORMANCE & VALUE

Fisher™ Snappy Joe™ Emergency Shutoff Valves (ESV) have been reliably serving generations of customers in the LPG Industry. The original shutoff valve is preferred for its:

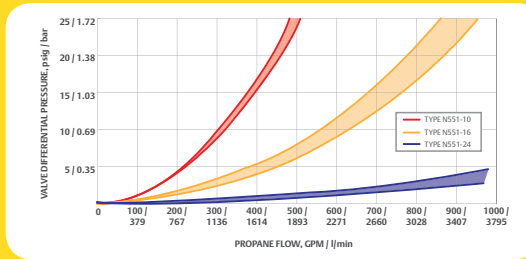
- Rugged Construction
- Ease of Maintenance
- Full-Port Flow Performance
- Range of Material Options
- Integral 212°F Thermal Fuse Link
- Reliable Release Latch
- Low Cost of Ownership

NEW FEATURES

- Enhanced Packing Design
- Simplified Gland Construction
- Poppet-to-Shaft Retention Device

FLOW PERFORMANCE

Type N551 is designed to give the maximum full-port flow available for a given piping diameter.



BENEFITS

- Poppet and Shaft remain connected to prevent lost time and potential disassembly from piping system during gland maintenance
- Increased cycle life and improved sealing performance at cold temperatures
- Elimination of nuisance leakage and shaft binding if retainer is torqued unevenly

Applications

- ✓ Bulk Plant
- ✓ Rail Car
- ✓ Specialty Gases

ENHANCED PACKING DESIGN

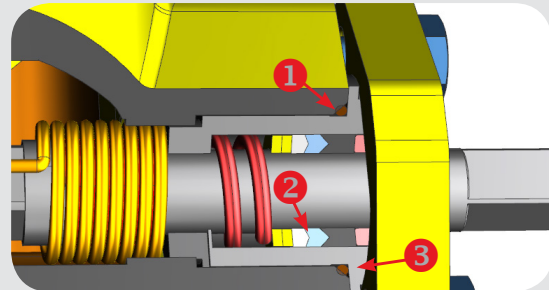
The gland packing of Type N551 has been re-designed to provide an improved seal for increased cycle life.

NEW FEATURES

- Superior Gland Seal Geometry with Captured O-ring Seal ①
- Optimized Polytetrafluoroethylene (PTFE) Chevron Packing ②
- New Gland Design Permits a Wider Torque Range on the Retainer Bolts for a Consistent Seal and Smooth, Dependable Valve Action ③

FIELD PROVEN FEATURES

- Stainless steel Trim Parts
- Heavy Duty Spring To Close Design
- UL®-Listed Design

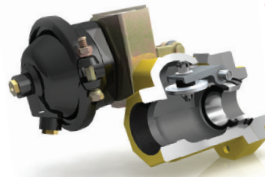


Re-designed Gland, Retainer and main gland external O-ring seal improve cycle life and seal performance

ACTUATOR CONTROL PACKAGE

The Fisher P539A actuator is:

Designed for enhanced service life and exceeds UL's cycle testing requirements.



SERVICEABILITY

- Convenient Bolt Gland Design for easy inspection and service.

Type N551 is easily serviced with few parts.



SUPERIOR SERVICE AND SUPPORT

The Emerson and Fisher worldwide distribution network includes an experienced sales and support team consisting of more than 2,000 technical experts available to serve you from nearly 200 offices throughout the world. For product integrity, reliability and performance - and a level of support no other supplier can equal - call on Emerson to help you meet even your toughest challenges.

UL® is a mark owned by Underwriters Laboratories.

Emerson Automation Solutions

Americas

T +1 800 558 5853
T +1 972 548 3574

✉ webadmin.regulators@emerson.com

🔍 Fisher.com

Europe

T +39 051 419 0611

📘 Facebook.com/EmersonAutomationSolutions

Asia Pacific

T +65 6777 8211

🌐 LinkedIn.com/company/emerson-automation-solutions

Middle East / Africa

T +971 4811 8100

🐦 Twitter.com/emr_automation

D450360T012 © 2015, 2018 Emerson Process Management Regulator Technologies, Inc. All rights reserved. 10/18.
The Emerson logo is a trademark and service mark of Emerson Electric Co. All other marks are the property of their prospective owners.
Fisher™ is a mark owned by Fisher Controls International LLC, a business of Emerson Automation Solutions.

FISHER™


EMERSON™