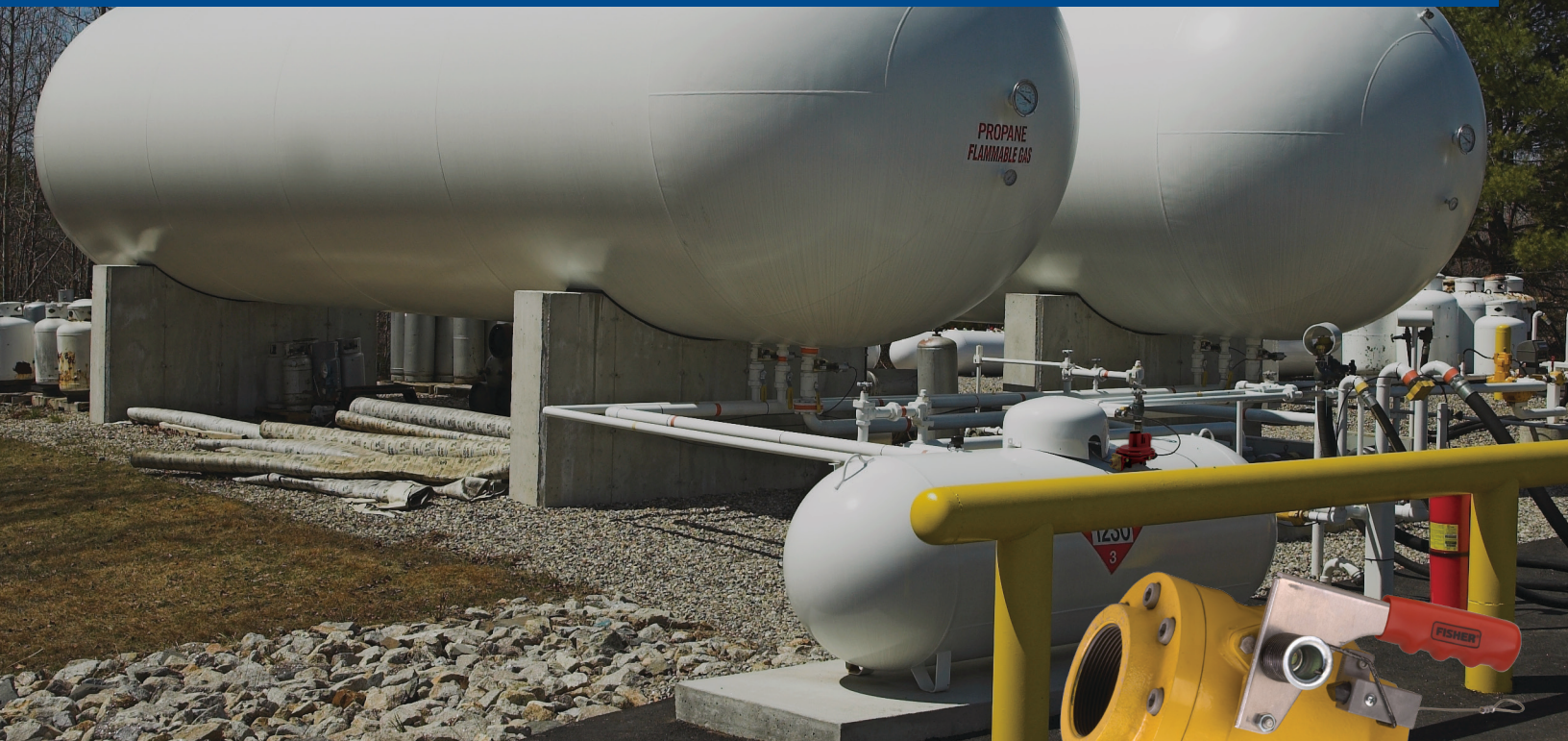
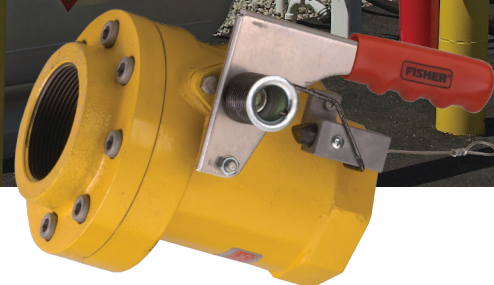


Re-engineered for increased durability and simplified maintenance



FISHER™ Type N551 Snappy Joe™ emergency shutoff valve



TYPE N551

Type N550 is Now Type N551

The trusted Type N550 shutoff valve is widely known by the LPG industry to provide maximum full-port flow performance, reliable shut-off and with low-cost of ownership. Improving upon those proven strengths in order to meet the increasing service demands, the Type N551 has been re-engineered to provide enhanced gland and sealing robustness and simplified maintenance.

Type N551 Emergency Shutoff Valve

The Type N551 emergency shutoff valve is intended for in-line use in LPG or Anhydrous Ammonia NH₃ service. The valve may be installed on either end of the transfer hoses and typically where the hose connects the bulk plant piping to the bobtail, transport or tank car. The Type N551 provides a quick way of shutting off gas flow in the event of a hose rupture.

TYPE N551 EMERGENCY SHUTOFF VALVES

Type	Body Size, FNPT	Propane Flow at 2 psi / 0.14 bar Differential, GPM / l/min	Maximum Inlet Pressure	Maximum Temperature Capability
N551-10	1-1/4	150 / 568	400 psig / 27.6 bar	160°F / 71°C*
N551-16	2	295 / 1117		
N551-24	3	850 / 3127		

OPTIONS

Seat Discs	Operation Methods
• Standard disc and O-ring material is Nitrile (NBR)	• Manual/Cable pull standard (add P164B)
• Viton® and Kalrez® available	• Air close P327D actuator
	• Air open-close P539A actuator

*All seats and seals use UL® tested materials rated for -40°F / -40°C. Viton® and Kalrez® are marks owned by E.I. Du Pont de Nemours and Co. UL® is a mark owned by Underwriters Laboratories.



PERFORMANCE AND VALUE

Emerson offers Fisher™ Snappy Joe™ Emergency Shutoff Valves (ESV) that are reliably serving generations of customers in the LPG Industry. The original shutoff valve is preferred for its:

- Rugged construction
- Full-port flow performance
- Range of material options
- Integral 212°F thermal fuse link
- Reliable release latch
- Low cost of ownership

FEATURES

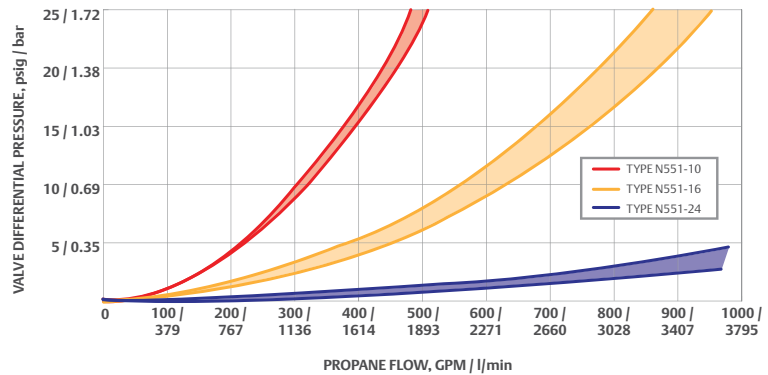
- Ease of maintenance
- Enhanced packing design
- Simplified gland construction

APPLICATIONS

- Bulk plant
- Rail car
- Specialty gases

FLOW PERFORMANCE

Type N551 is designed to give the maximum full-port flow available for a given piping diameter.



BENEFITS

- Poppet and Shaft remain connected to prevent lost time and potential disassembly from piping system during gland maintenance
- Increased cycle life and improved sealing performance at cold temperatures
- Elimination of nuisance leakage and shaft binding if retainer is torqued unevenly

ENHANCED PACKING DESIGN

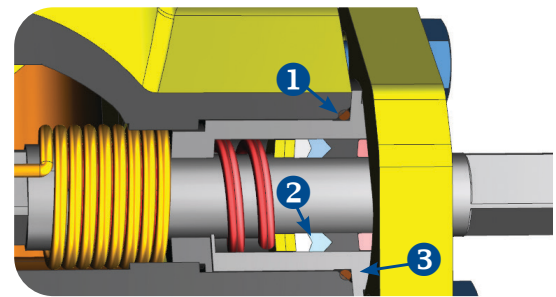
The gland packing of Type N551 has been re-designed to provide an improved seal for increased cycle life.

FEATURES

- Superior gland seal geometry with captured O-ring seal⁽¹⁾
- Optimized polytetrafluoroethylene (PTFE) Chevron packing⁽²⁾
- New gland design permits a wider torque range on the retainer bolts for a consistent seal and smooth, dependable valve action⁽³⁾

FIELD PROVEN FEATURES

- Stainless steel trim parts
- Heavy duty spring to close design
- UL®-listed design

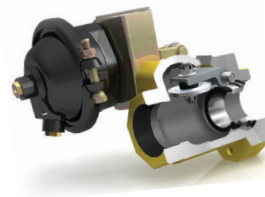


Re-designed gland, retainer and main gland external O-ring seal improve cycle life and seal performance

ACTUATOR CONTROL PACKAGE

The Type P539A actuator is:

- Designed for enhanced service life and exceeds UL's cycle testing requirements.
- Convenient Bolt Gland Design for easy inspection and service.



Type N551 is easily serviced with few parts.



SUPERIOR SERVICE AND SUPPORT

Emerson's industry leading service and support offers a complete line of LPG equipment with a worldwide distribution network. Our experienced sales and support teams consist of more than 2000 technical experts available to serve you from nearly 200 offices worldwide. Contact Emerson to learn more about our services.

UL® is a mark owned by Underwriters Laboratories.

Emerson Automation Solutions

Americas

T +1 800 558 5853
T +1 972 548 3574

✉ webadmin.regulators@emerson.com

🔍 Fisher.com

Europe

T +39 051 419 0611

📘 Facebook.com/EmersonAutomationSolutions

Asia Pacific

T +65 6777 8211

🌐 LinkedIn.com/company/emerson-automation-solutions

🐦 Twitter.com/emr_automation

Middle East / Africa

T +971 4811 8100