

# easy-Drive Configurator Software Release Notes

Date: April 2024  
Version 2.4.0.2

## 1. Description

This Release Notes document is for the easy-Drive Configurator version 2.4.0.2. It describes the updates and enhancements included in this release, along with product compatibility and upgrade instructions.

## 2. Overview

This release incorporates various fixes and enhancements as shown below.

## 3. Items Addressed in Release 2.4.0.2

Item	Description
1	Added support for easy-Drive 200R Rotary Electric Actuator. See the 200R Instruction Manual for more details.
2	Added support for Virtual Stops control mode. See the Instruction Manual Supplement on Control Method Changes for an overview of this new control method.
3	Added support for Dual Contact Stepped control mode. See the Instruction Manual Supplement on Control Method Changes for an overview of this new control method.
4	Added support for a maximum allowed position in 4-20 mA Level control mode. See the Instruction Manual Supplement on Control Method Changes for an overview of this new feature.
5	Enhanced product security with firmware signature verification. See Section 6 for an overview of the new signature verification features.
6	Added a Configuration Viewer to provide the user with a record of their configuration options in the event of a configuration loss. See Section 7 for an overview of the new Configuration Viewer features.
7	Updated instruction manuals to latest versions.
8	Modified the manual connection process to wait until the user clicks connect to apply new settings.
9	Enhanced the process of connecting to the Configurator after updating device firmware.
10	Updated the system snapshot's file name to save as the easy-Drive's serial number by default.
11	Added a step to calibration to confirm that the Configurator is calibrating the correct type of valve.
12	Enhanced the firmware update process so that the easy-Drive's configuration will be restored automatically if lost during the update.
13	Modified the configuration process to apply changes only to the selected control method.
14	Various minor bug fixes and quality enhancements.

## 4. Product Compatibility

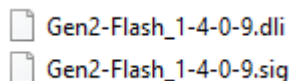
For optimal performance with the easy-Drive product line, it is recommended to use the latest version of the Configurator.

## 5. Software Installation Instructions

1. Ensure you have administrative rights for your computer.
2. Remove the license dongle if already in a USB port.
3. Extract the files in Gen2easyDriveConfigurator\_v2.4.0.2.zip to a local folder.
4. From that folder, run the file "Gen2easyDriveConfigurator\_V2.4.0.2.bat".
5. Follow the on-screen prompts for installation.
6. The command window will open, and two separate installations will occur. The first is the configuration tool itself. The second is the driver for the license dongle.

## 6. Firmware Signature Verification

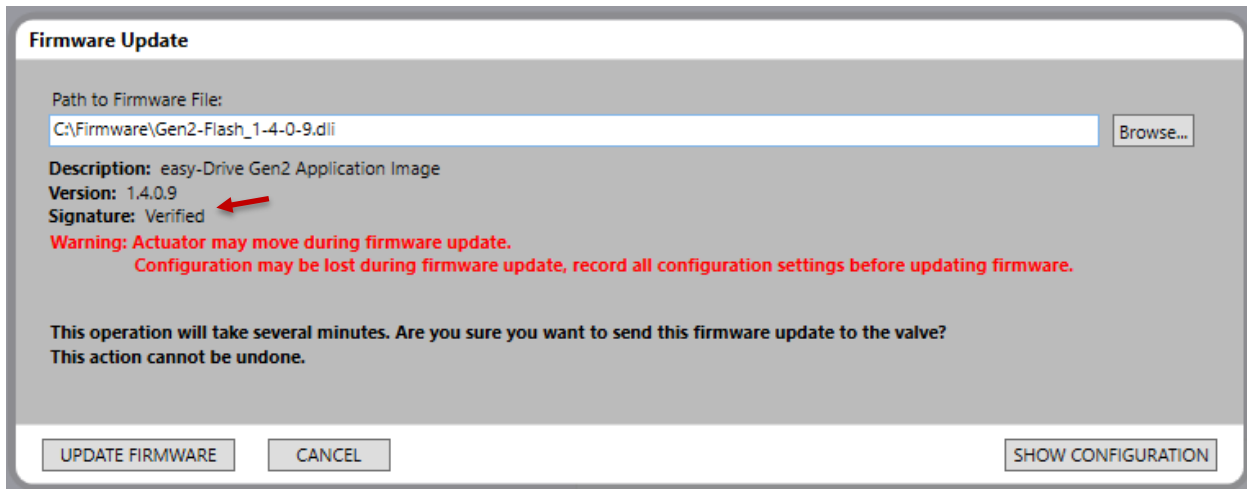
The easy-Drive Configurator now provides support for verifying Gen2 firmware images using a Fisher provided signature file. This signature file can only be created by Fisher and is unique to each version of firmware. By using the signature file, you can ensure the firmware you are applying to your device is genuine Fisher firmware and has not been corrupted or modified.



**Figure 1 - Firmware image and signature files**

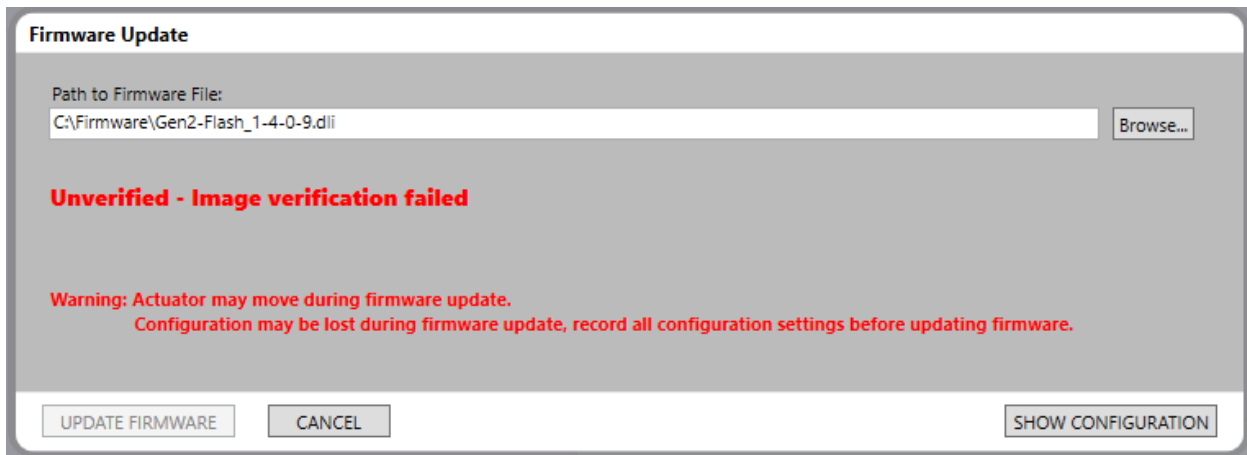
With every release of Gen2 firmware image (.dli), you will also be provided a signature file (.sig) of the same name with a different file extension (see Figure 1). These files should not be renamed and should be kept together in the same folder. If for some reason the filename must change, both the image and signature file names should be changed, with the extensions remaining unchanged.

When updating the firmware on a Gen2 device, you will select the firmware image as normal. Once the image is selected, the Configurator will use the signature file to verify the image is authentically created by Fisher and notify you in the file information (see Figure 2).



**Figure 2 - Signature verified message**

If the signature verification fails, either because the image file, signature file, or configurator image has been modified, you will be notified of the failure and will not be able to update the firmware (see Figure 3).



**Figure 3 - Image verification failure**

If the signature file is missing, you will still be able to download the firmware; however, you will receive a message notifying you that the signature file is not found (see Figure 4). It is not recommended to apply firmware without an associated signature file, unless advised to do so by Fisher support.

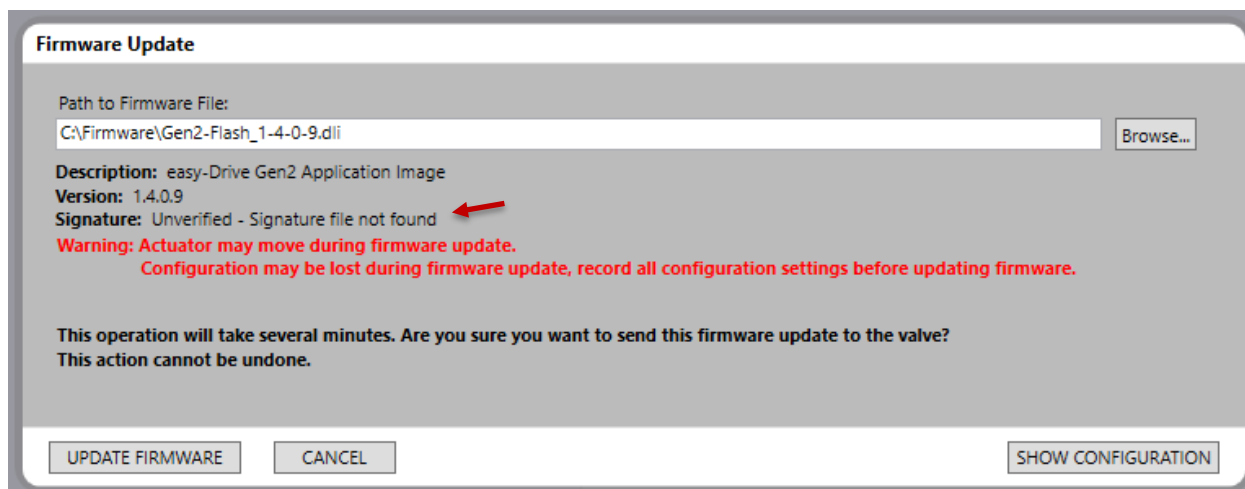


Figure 4 - Signature file not found

## 7. Configuration Viewer

The easy-Drive Configurator now has a viewer that allows the user to see all of the easy-Drive's most recently used configuration parameters. Because it is possible for configuration settings to be lost during a firmware update (e.g. if power is lost while updating firmware), it is recommended for the user to record all of the information in the Configuration Viewer before initiating a firmware update. After the firmware update has concluded, if configuration settings were lost, the user can return the easy-Drive to its former configuration by setting all of the parameters to the values recorded before the firmware update.

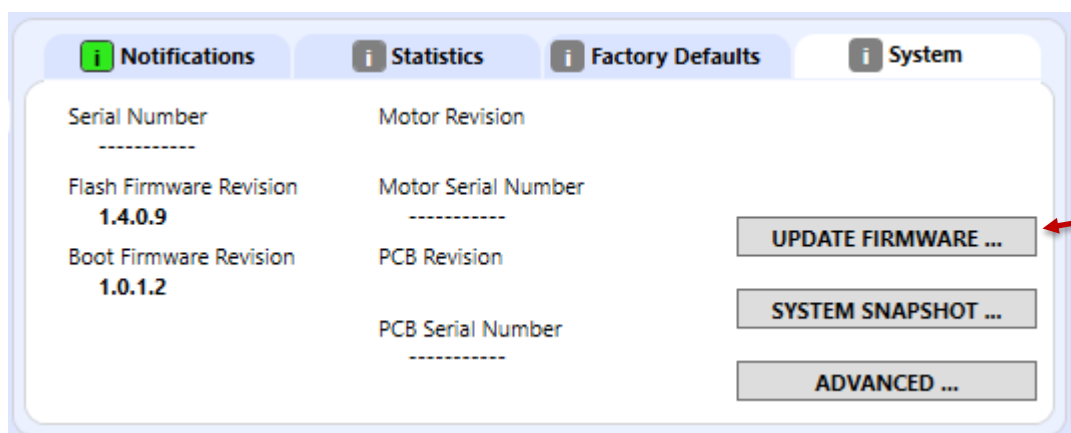
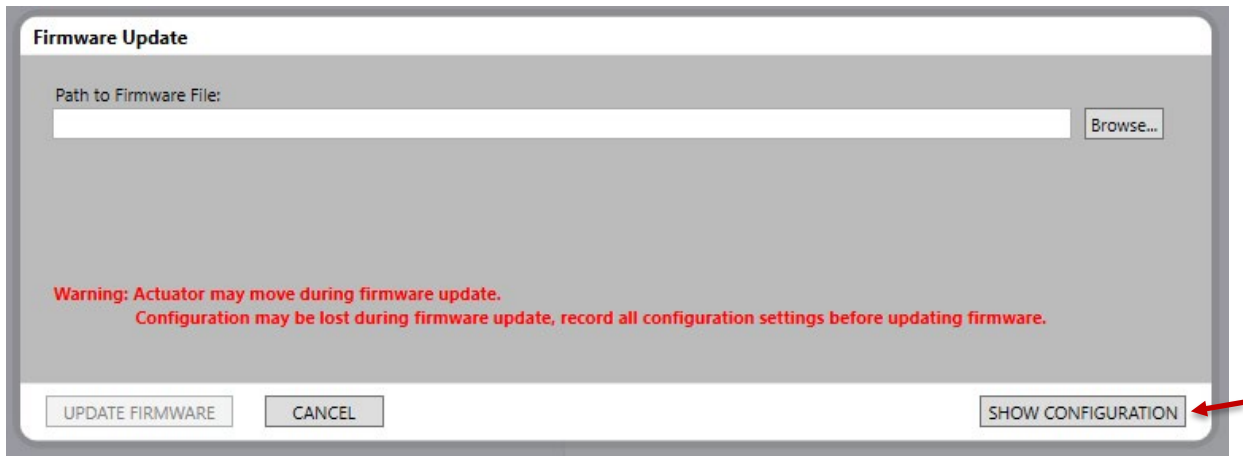


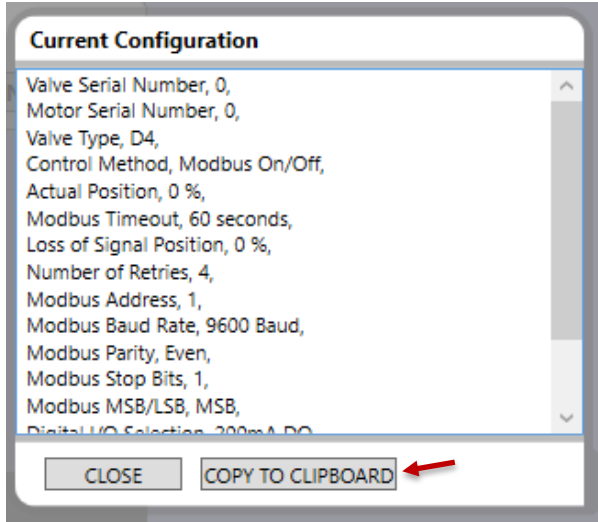
Figure 5 - System Tab

To reach the Configuration Viewer, navigate to the Update Firmware window through the System tab (see Figure 5). In the Update Firmware menu, there will be a button that reads "Show Configuration" that will open the Configuration Viewer when clicked (see Figure 6).



**Figure 6 - Firmware Update window**

When the button is clicked, the Configuration Viewer will be opened to the left of the Firmware Update window. All of the configuration parameters for the easy-Drive's current control method will be displayed in the Configuration Viewer. The user can then copy all of this information and record it in a trustworthy location (see Figure 7). Note that the Configuration Viewer can only be used to view and record the current configuration parameters on the easy-Drive; this viewer will not automatically restore configuration settings if lost.



**Figure 7 - Configuration Viewer**

© 2024 Fisher Controls International Incorporated. All rights reserved.

The contents of this publication are presented for informational purposes only. While every effort has been made to ensure informational accuracy, they are not to be construed as warranties or guarantees, express or implied, regarding the products or services described herein or their use or applicability. Fisher Controls International Incorporated reserves the right to modify or improve the designs or specifications of such products at any time without notice. All sales are governed by Fisher Controls International Incorporated's terms and conditions which are available upon request. Fisher Controls International Incorporated does not assume responsibility for the selection, use or maintenance of any product. Responsibility for proper selection, use and maintenance of any Fisher Controls International Incorporated product remains solely with the purchaser and end-user.