

# Config600™ Configuration Software

The Config600™ Configuration Software Suite (Config600) provides tools that enable you to configure FloBoss™ S600+ Flow Computers. Config600 enables you to transfer an existing FloBoss S600 configuration into a new or upgraded FloBoss S600+ (although some manual configuration changes may be required).

Config600 software consists of the following components and features:

- Windows®-based, easy to use interface.
- Separate configuration and maintenance applications.
- LogiCalc scripting language.
- Password security.
- Common application templates.

Config600 software is designed for ease of use. Dialog boxes help direct selections and data entry. Drop down menus and pre-loaded field values guide you through the process of building configurations.

Three versions of Config600 are available.

- Config600 Pro
- Config600 Lite+
- Config600 Lite

Table 1. Config600 Tools

Feature	Config600 Lite	Config600 Lite+	Config600 Pro
PCSetup Program	X	X	X
Transfer Program	X	X	X
Report Editor	X	X	X
Modbus Editor	X	X	X
Display Editor	X	X	X
Configuration Generator		X	X
System Editor			X
LogiCalc™			X

**Note:** A Pro license is **only** available to those who successfully complete the RA901 Config600 Advanced Training course (formerly Config600 Pro Training).

Config600 Pro enables you to build, send, receive, and edit FloBoss S600+ configurations. Config600 Pro provides a full configuration workbench, and is for users who need to have full control over their application.

Config600 Lite allows you to send, receive and edit existing configurations, and is suggested for users whose configurations have been initially created by their local sales channel, integrator, or the factory.

Config600 Lite+ includes the features of Config600 Lite, and adds the functionality of the Configuration Generator.

The Configuration Generator is included with Config600 Lite+ and Config600 Pro, and allows you to create configurations and specify the number of stations and meter runs, meter run types, and the calculation method.

The PCSetup Program is included with all versions of Config600 software, and allows you to tailor the configuration to the process by adding, deleting, or changing the process parameters. The process parameters include engineering units, I/O parameters, communications port parameters, archiving and reporting parameters, meter constants, calculation initialization modes, totalizer parameters, alarm limits, and security access (password and user names).

The Transfer Program is included with all versions of Config600 software and can download the configuration into the flash memory of a FloBoss S600+. The program can upload the configuration from the device to a PC. It also permits software upgrades in the field.

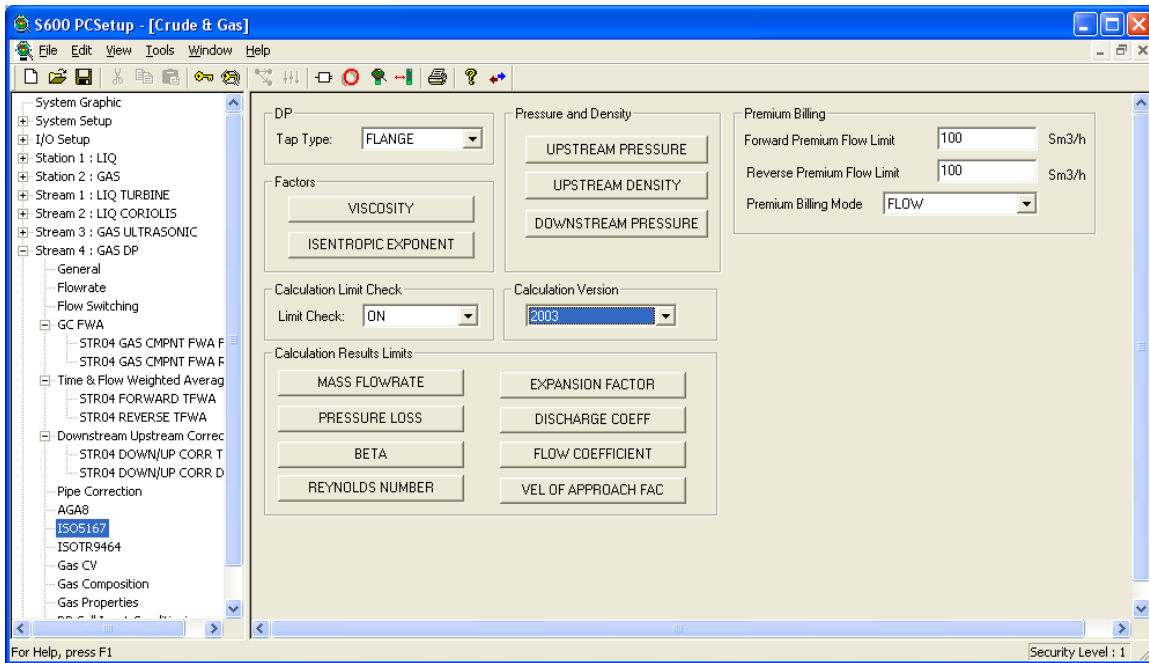
**Note:** A specialized utility program, IPL600, is available to help you send and receive configuration files (and configure related communications settings) and is intended for users who do not require the configuration building, reporting, or editing abilities of Config600.

The Report Editor, Display Editor, and Modbus Editor programs are included with all versions of Config600 software, and allow you to modify the reports, display interfaces, and Modbus mappings created by the Configuration Generator program.

The LogiCalc user language enables you to write and/or edit user programs in a scripting language similar to BASIC. It contains a development tool to help write, test, and debug programs. Testing can be performed on a PC against an actual FloBoss S600+ configuration file, and then conducted in the field on the actual FloBoss S600+ (field testing requires a serial or network connection).

Refer to Config600 Specifications and Requirements (on the following page) for minimum equipment requirements.

Help screens are accessed from the Help menu. This feature makes it easy to learn how to use this software and to access on-line information for any topic. The software and user documentation are supplied on a CD-ROM.



Config600 Example Configuration Screen

## Config600 Specifications and Requirements

### Software Operating Requirements

Operating System	Microsoft® Windows® 7 Professional (32- or 64-bit)
	Microsoft® Windows® 10 (32- or 64-bit)

### Hardware Operating Requirements

CPU	1 GHz or faster processor
Hard Disk Space (recommended)	16 GB (32-bit OS) or 20 GB (64-bit OS)
RAM	1 GB (32-bit) or 2 GB (64-bit)
Display (recommended)	1024 x 768 pixels, SVGA color monitor
Network Port	USB port and/or Ethernet

For customer service and technical support, visit [www.Emerson.com/SupportNet](http://www.Emerson.com/SupportNet).

**Global Headquarters,  
North America, and Latin America:**

Emerson Automation Solutions  
Energy and Transportation Solutions  
6005 Rogerdale Road  
Houston, TX 77072 U.S.A.  
T +1 281 879 2699 | F +1 281 988 4445  
[www.Emerson.com/EnergyandTransportation](http://www.Emerson.com/EnergyandTransportation)

**United Kingdom:**

Emerson Process Management Limited  
Regulatory Compliance Department  
Company No. 00671801  
Meridian East  
Leicester LE19 1UX UK  
T +44 11 6828 23 64  
[ukproductcompliance@emerson.com](mailto:ukproductcompliance@emerson.com)

**Europe:**

Emerson S.R.L  
Regulatory Compliance Shared Services  
Department  
Company No. J12/88/2006  
Emerson 4 Street  
Parcul Industrial Tetarom 11  
Romania  
T +40 374 132 000

**Middle East/Africa:**

Emerson Automation Solutions  
Energy and Transportation Solutions  
Emerson FZE  
P.O. Box 17033  
Jebel Ali Free Zone – South 2  
Dubai U.A.E.  
T +971 4 8118100 | F +971 4 8865465

**Asia-Pacific:**

Emerson Automation Solutions  
Energy and Transportation Solutions  
1 Pandan Crescent  
Singapore 128461  
T +65 6777 8211 | F +65 6777 0947

© 2004 – 2022 Energy and Transportation Solutions, an affiliate of Emerson Electric Co. All rights reserved.

This publication is for informational purposes only. While every effort has been made to ensure accuracy, this publication shall not be read to include any warranty or guarantee, express or implied, including as regards the products or services described or their use or applicability. Energy and Transportation Solution (ETS) reserves the right to modify or improve the designs or specifications of its products at any time without notice. All sales are governed by ETS terms and conditions which are available upon request. ETS accepts no responsibility for proper selection, use or maintenance of any product, which remains solely with the purchaser and/or end-user. Emerson Automation Solutions, Emerson, and the Emerson logo are trademarks and service marks of Emerson Electric Co. All other marks are the property of their respective owners.