

# Bristol® External 2-Position Manual-Automatic Station

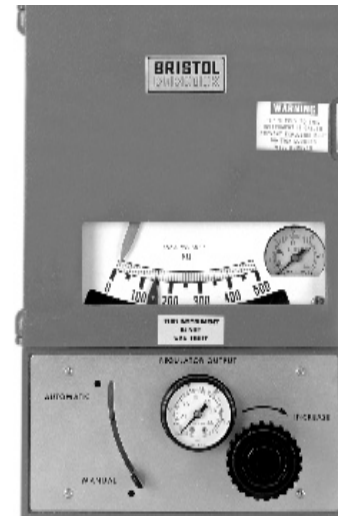
## General

The Bristol® external two-position manual automatic station, from Emerson Process Management, is used for transferring the pneumatic control of a process from either manual operation to automatic operation or automatic operation to manual operation.

This station is designed for use with Bristol Series 5453, Model 624-II indicating controllers.

Solid state pneumatics eliminates all tubing and tubing connections for greater reliability.

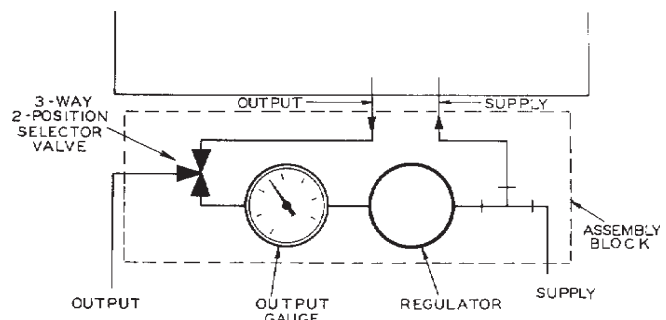
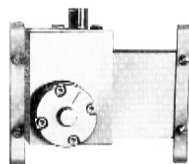
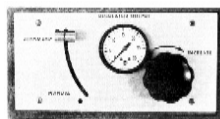
This design insures that only low copper bearing alloys come in contact with process.



Model 624 II

## Features

- Solid state pneumatics – No tubing
- All stainless steel and aluminum – low copper alloys
- Integral or remote mounting
- Easy installation – 2 screws
- Reliable T-bar switch
- Gas vent connection standard



Schematic Piping Diagram

## Specifications

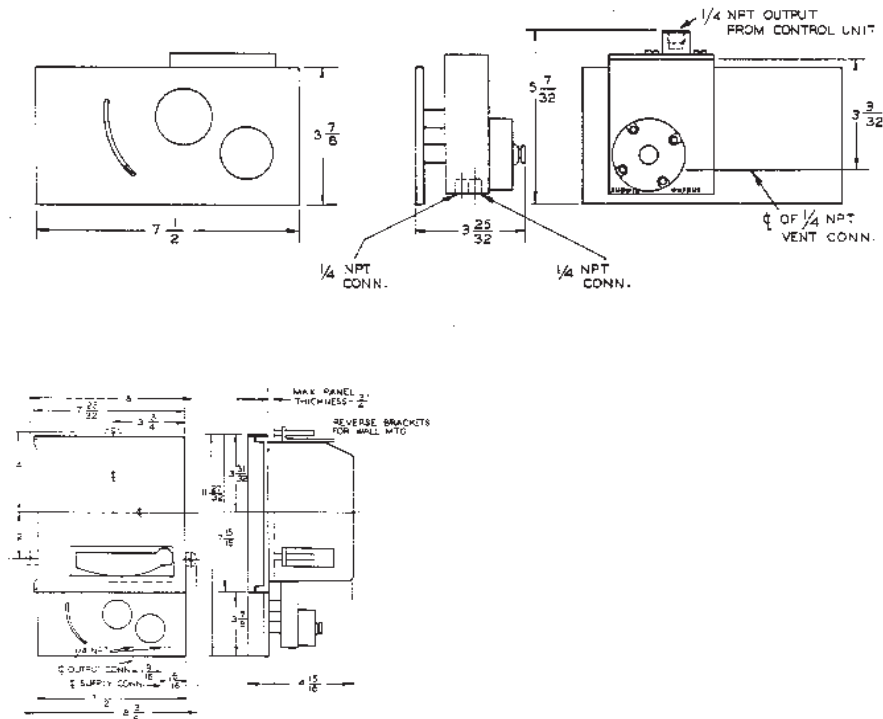
- **Supply Pressure**  
20 psig
- **Regulator Output**  
3-15 psig
- **Weight**  
3 pounds
- **Air Consumption**  
Less than .1 scfm
- **Piping Connection**  
1/4" NPT

## Ordering Information

Can be ordered as part of the model number string when purchasing a new 5453 instrument, or as a stand-alone product.

When ordering for "Direct" mounting to a 5453 series controller, specify **part no. 385276-01-0-KIT**.

When ordering for "Separate" surface or panel cut-out mounting where the end user mounts the unit and then pipes to the controller, specify **part no. 392781-01-8**.



© 2007 Remote Automation Solutions, division of Emerson Process Management. All rights reserved.

Bristol, Inc., Bristol Babcock Ltd, Bristol Canada, BBI SA de CV and the Flow Computer Division, are wholly owned subsidiaries of Emerson Electric Co. doing business as Remote Automation Solutions ("RAS"), a division of Emerson Process Management. FloBoss, ROCLINK, Bristol, Bristol Babcock, ControlWave, TeleFlow and Helicoid are trademarks of RAS. AMS, PlantWeb and the PlantWeb logo are marks of Emerson Electric Co. The Emerson logo is a trademark and service mark of the Emerson Electric Co. All other marks are property of their respective owners.

The contents of this publication are presented for informational purposes only. While every effort has been made to ensure informational accuracy, they are not to be construed as warranties or guarantees, express or implied, regarding the products or services described herein or their use or applicability. RAS reserves the right to modify or improve the designs or specifications of such products at any time without notice. All sales are governed by RAS' terms and conditions which are available upon request. RAS does not assume responsibility for the selection, use or maintenance of any product. Responsibility for proper selection, use and maintenance of any RAS product remains solely with the purchaser and end-user.

### Emerson Process Management Remote Automation Solutions

Watertown, CT 06795 USA  
Mississauga, ON 06795 Canada  
Worcester WR3 8YB UK

T 1 (860) 945-2200  
T 1 (905) 362-0880  
T 44 (1) 905-856950

