

# Effectively Employing AMS Machinery Manager and the CSI 2130 for Rotating Machinery

- *Validate database and capture new baseline for analysis*
- *Set accurate alarm parameters to optimize analysis time*
- *Develop work procedures that include use of CSI 2130*
- *Incorporate work procedures into enterprise asset management system*
- *Ensure management sees financial impact of program*



*Improve operational value from your mechanical assets by optimizing AMS Machinery Manager and the CSI 2130.*

## **Establish or Revitalize Your Machinery Health Reliability Program**

Use the predictive diagnostic capabilities of the CSI 2130 to make informed decisions about your plant's machinery health. By implementing technology into daily work processes, you can direct asset information to the appropriate departments. Fully implementing AMS Machinery Manager and the CSI 2130 Machinery Health Analyzer\* allows you to focus on your most critical assets, saving you time and money.

By partnering with Emerson's PlantWeb Services experts, you can ensure that you are capturing and documenting effective work processes, providing procedure consistency even through staff changes. By prioritizing your mechanical assets and optimizing your alert parameters, your staff will only collect and analyze data and alerts from critical assets. These procedural changes will allow you to increase your maintenance and operational efficiency.

\*Note: These services work for both the CSI 2120 and CSI 2130 models of Machinery Health analyzers.



## Install

INSTALL is designed to establish a valid database and baseline in AMS Machinery Manager. An INSTALL-certified field service technician will perform the following services:

- Establish asset names/ measurement locations
- Install and license software and CSI 2130
- Verify networks and CSI 2130 communication
- Create and validate database
- Set up analysis parameters and alert sets
- Verify CSI 2130 DLP firmware applications
- Review basic software and CSI 2130 functions and navigation with user
- Establish new baseline data and analyze
- Review user's training and mentoring plan
- Back up the database

## Implement

After you have completed the INSTALL module, optimize your alert settings and develop standard operating procedures with IMPLEMENT. A PlantWeb Services engineer will perform the following services:

- Validate field asset information
- Hold awareness training event to establish a common understanding of the process and gain organizational alignment
- Establish benchmarks with 2-3 Key Performance Indicators (KPIs)
- Evaluate work flow processes and recommend industry best practices
- Validate priority of mechanical assets. Create and map a Maintenance Strategy Blueprint
- Re-engineer mechanical maintenance tasks to utilize CSI 2130
- Optimize AMS Machinery Manager database and alert settings
- Review new maintenance tasks and generate load table for CMMS
- Develop path forward considerations and present project report

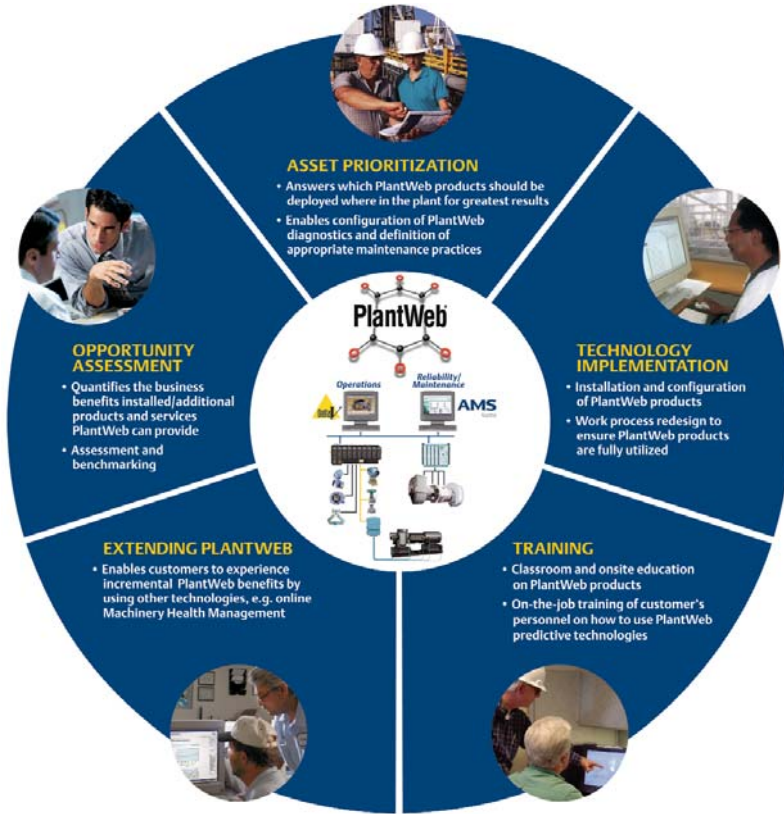
INSTALL is a prerequisite to IMPLEMENT.

## Incorporate

At many facilities, users found that integrating AMS Machinery Manager with their enterprise asset management system allowed for measurement of real improvement. During INCORPORATE, a PlantWeb Services engineer will perform the following services:

- Load re-engineered maintenance tasks into enterprise asset management system
- Provide mentoring and coaching to adopt maintenance tasks as standard operating procedures in CMMS
- Facilitate meetings to gain support for maintenance activities and process changes from various impacted departments
- Schedule a return visit to confirm results, benchmarks, and improvement to plant's bottom line performance

INSTALL and IMPLEMENT are a prerequisite to INCORPORATE.



Emerson's PlantWeb Services for Asset Optimization addresses specific business barriers and helps your plant overcome them, moving you from a reactive plant to a best cost producer.

## How Can PlantWeb Services Improve My Plant's Bottom Line?

Through the expertise of Emerson's PlantWeb Services, the capabilities of AMS Machinery Manager and CSI 2130 can be fully deployed in your facility to drive improved decision-making. We will help you incorporate work practices that streamline daily maintenance, implement predictive maintenance for enhanced performance, and fully optimize your maintenance resources. Document and institutionalize your work practices so that your

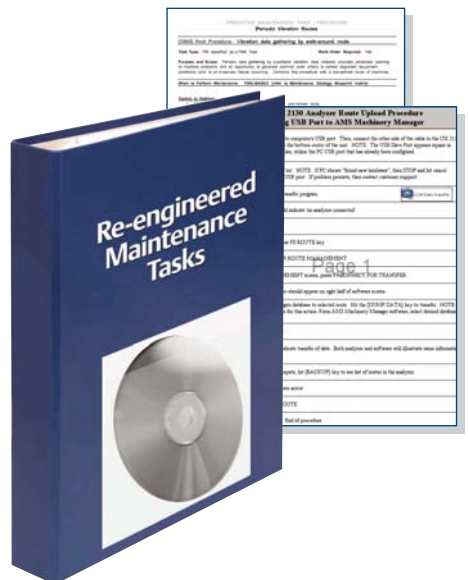
maintenance activities remain consistent, regardless of shift or staff changes.

PlantWeb Services also takes you a step further by re-engineering work tasks in your maintenance management system to establish standard operating procedures across your enterprise. Leverage the power of your predictive field diagnostics with AMS Machinery Manager and the CSI 2130 when your CMMS produces work procedures that maximizes your technology investment. Use these technologies to improve manpower efficiency and become a best cost producer.

## Prioritize Your Assets For Improved Maintenance Practices

Most maintenance programs spend time collecting information on all machines in a facility. By prioritizing your mechanical assets, you can focus your database and reduce the time wasted by collecting and analyzing data on too many machines. The Maintenance Strategy Blueprint, created during IMPLEMENT, matches predictive maintenance technologies to the priority of your assets, providing a tool to more effectively implement your asset maintenance strategy.

After prioritizing your mechanical assets, a PlantWeb Services engineer will optimize the alarm parameters on your critical assets. You will experience heightened efficiency as your maintenance and operations staff will receive accurate alarms, with a focus on the assets that are most critical to your process.



- Strategy blueprint matrix
- Binder with your re-engineered maintenance tasks

### Scalable Modules To Match Your Schedule

PlantWeb Services are offered in scalable modules, allowing you to choose when you and your facility's schedule are ready for the next level of support.

Emerson knows that every facility is unique and has its own maintenance and operations needs. That's why Emerson will design a PlantWeb Service engagement schedule around your facility's specialized needs.

### PlantWeb Services for Rotating Machinery

#### INSTALL

Part Number	Description	
MHM-INST-21XXXX	XXXX = number of tags (online)	75-500 (increments of 25), 500-1,000 (increments of 50), 1,000-4,000 (increments of 500)

#### IMPLEMENT

Part Number	Description	
MHM-IMPL-21XXXX	XXXX = number of tags (online & off-line)	75-500 (increments of 25), 500-1,000 (increments of 50), 1,000-4,000 (increments of 500)

#### INCORPORATE

Part Number	Description	
MHM-INCO-21XXXX	XXXX = number of tags (online & off-line)	75-500 (increments of 25), 500-1,000 (increments of 50), 1,000-4,000 (increments of 500)

#### Emerson Process Management

#### Asset Optimization Division

835 Innovation Drive  
Knoxville, Tennessee 37932  
T (865) 675-2400  
F (865) 218-1401

©2007, Emerson Process Management.

The contents of this publication are presented for informational purposes only, and while every effort has been made to ensure their accuracy, they are not to be construed as warranties or guarantees, express or implied, regarding the products or services described herein or their use or applicability. All sales are governed by our terms and conditions, which are available on request. We reserve the right to modify or improve the designs or specifications of our products at any time without notice.

All rights reserved. AMS, PlantWeb and Machinery Health are marks of one of the Emerson Process Management group of companies. The Emerson logo is a trademark and service mark of Emerson Electric Co. All other marks are the property of their respective owners.



PlantWeb Services for Asset Optimization ensure successful implementation of the AMS Suite and maximize the value realized by users.