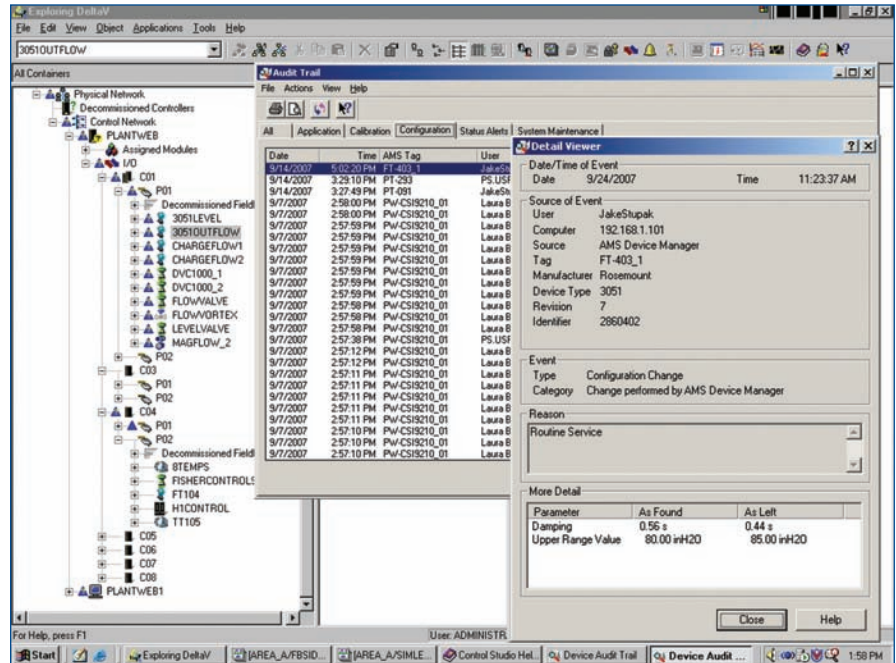


AMS Device Manager Audit Trail

- Reduce costs by consolidating steps
- Save time by viewing device history easily
- Easy access to device status information



The Audit Trail option enables you to contain documentation costs by automating record-keeping.

Reduce Costs by Consolidating Steps

Keeping accurate, on-going records is essential in regulated industries - but it can be costly.

You perform a task, then you must document it. But sometimes documenting a task requires more time than performing it. Save time and money by consolidating those steps through the AMS Device Manager Audit Trail option.

As you perform your tasks, the Audit Trail works in the background to automatically create the necessary documentation trail.

Save Time by Viewing Device History Easily

At a moment's notice, you can determine when and by whom a particular device was reconfigured or tested. You'll find which parameters were changed and for what reason. Sharpen your information searches and investigate specific circumstances by filtering Audit Trail events.

Easy Access to Device Status Information

Find problem areas quickly without sorting through reams of paper. Perform a search and discover relevant field device information that will lead to process improvements.

Product Description

The Audit Trail option for AMS Device Manager provides historical records of device configuration changes and performance.

You can access any record by clicking on the Audit Trail menu that appears adjacent to each device. All records are date- and time-stamped and have a user and PC correlation. To ensure data integrity, historical records cannot be edited.

Each record allows users to look at changes to the device and the reason for change.

Records are tied to a plant location (or tag) and to a specific device. For example, the Audit Trail for a specific tag shows all devices and changes associated with that plant location, creating a seamless record of events.

The tabular format of the Audit Trail allows you to review all configuration changes or focus on a few specific changes. You can also view records for an entire plant or for a single device. With the power to focus your view, you can more easily analyze information.

The Audit Trail categorizes the following information:

- Device configuration records
- Calibration records
- Diagnostic information
- AMS Device Manager maintenance records

Device Configuration Records

Retain device configuration records, including all device identification information such as output range and materials of construction. These records can be used to help meet process safety requirements.

Calibration Activities

For each tag, the Audit Trail records results of as-found/as-left tests. The results are stored in a historical life, providing a documentation trail for international standards organizations or regulatory agencies. By reviewing the historical life, you can determine when a particular device was tested and calibrated. Also, you can determine who conducted the test, the individual test points and errors, the serial number of the test equipment, and any notes taken during the test or calibration.

Diagnostic Information

The Audit Trail stores information about status changes occurring in field devices. In fact, you can choose which status alerts trigger an Audit Trail event and which parameters are included in the Audit Trail record.

You can store field device status data such as analog output saturated condition, communication failure, device malfunction, and process variables that are out of limits.

AMS Device Manager Maintenance Records

When files are backed up, uploaded, or merged from other AMS Device Manager PCs, the Audit Trail automatically records the event. This feature enables you to view instances when the database was backed up and by whom.

User-Defined Events

In addition to automatically creating Audit Trail events, AMS Device Manager allows you to manually enter any activity that is not already tracked. You can document events that may affect your device performance, such as a power outage. Leverage the power of AMS Device Manager and intelligent devices to automate your documentation process with the AMS Device Manager Audit Trail.

Emerson Process Management
Asset Optimization Division
12001 Technology Drive
Eden Prairie, MN 55344 USA
T 1(952)828-3206
F 1(952)828-3033

©2007, Emerson Process Management.

The contents of this publication are presented for informational purposes only, and while every effort has been made to ensure their accuracy, they are not to be construed as warranties or guarantees, express or implied, regarding the products or services described herein or their use or applicability. All sales are governed by our terms and conditions, which are available on request. We reserve the right to modify or improve the designs or specifications of our products at any time without notice.

All rights reserved. AMS and PlantWeb are a marks of one of the Emerson Process Management group of companies. The Emerson logo is a trademark and service mark of Emerson Electric Company. All other marks are the property of their respective owners.



AMS Suite: Intelligent Device Manager powers PlantWeb through predictive and proactive maintenance of intelligent field devices to improve availability and performance.