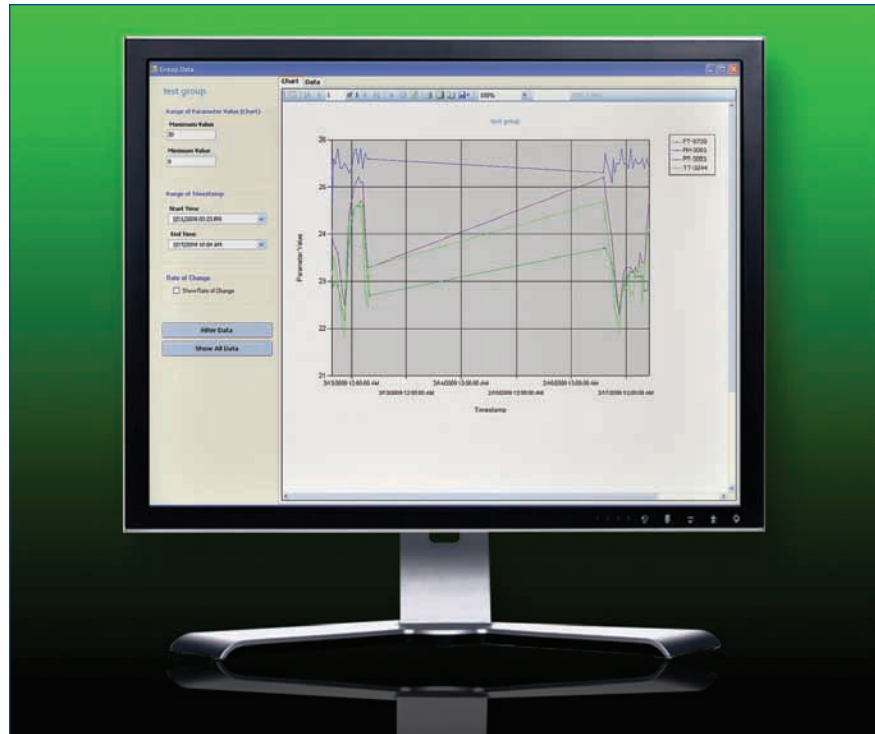


AlertTrack™ SNAP-ON™ Application

- Create device specific alerts
- Prevent unscheduled maintenance downtime
- Enhance overall visibility of operating devices
- Route alerts to your cell phone or mobile device



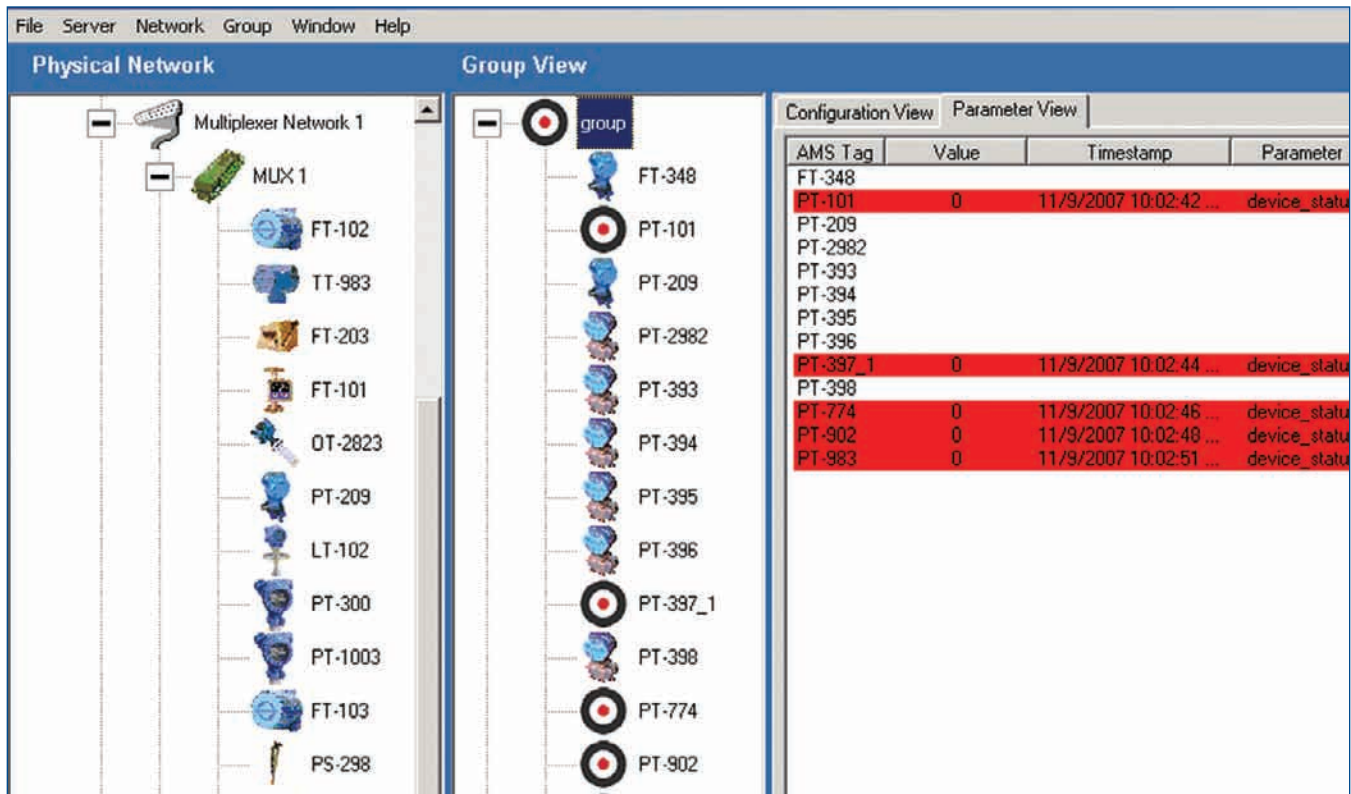
The AlertTrack SNAP-ON application evaluates and reports asset health based on defined alert conditions, while documenting data at a defined user rate.

Overview

AMS Device Manager allows you to track the health of your intelligent devices, sending critical alerts to operations and maintenance to help prevent an interruption in your process. With the AlertTrack SNAP-ON application, you gain visibility to the health of your field devices and documentation of parameter changes. You can also route alerts to your cell phone or mobile device for on-the-go notification of device health or process environment conditions.

The AlertTrack SNAP-ON allows you to:

- Group multiple devices and set parameters to be scanned and documented.
- Analyze trends to identify problem assets.
- Access AlertTrack messages through the AMS Device Manager Alert Monitor and Audit Trail or your mobile device.
- Take corrective action before assets fail or production is interrupted.



The AlertTrack SNAP-ON application allows you to pinpoint trouble spots in your process directly from the control room or from your mobile device. Customize safety alerts to reduce exposure of plant personnel to hazardous conditions in the field.

Clear Picture of Valve Performance

You can assign an hourly, daily, or monthly scan cycle to a group of valves performing similar work. The AlertTrack SNAP-ON application stores valve cycle and travel accumulation data in an SQL database, removing the need for maintenance personnel to manually record and enter it. View data trends in Excel or other SQL-compatible tools to compare performance across valves and identify areas for process improvement.

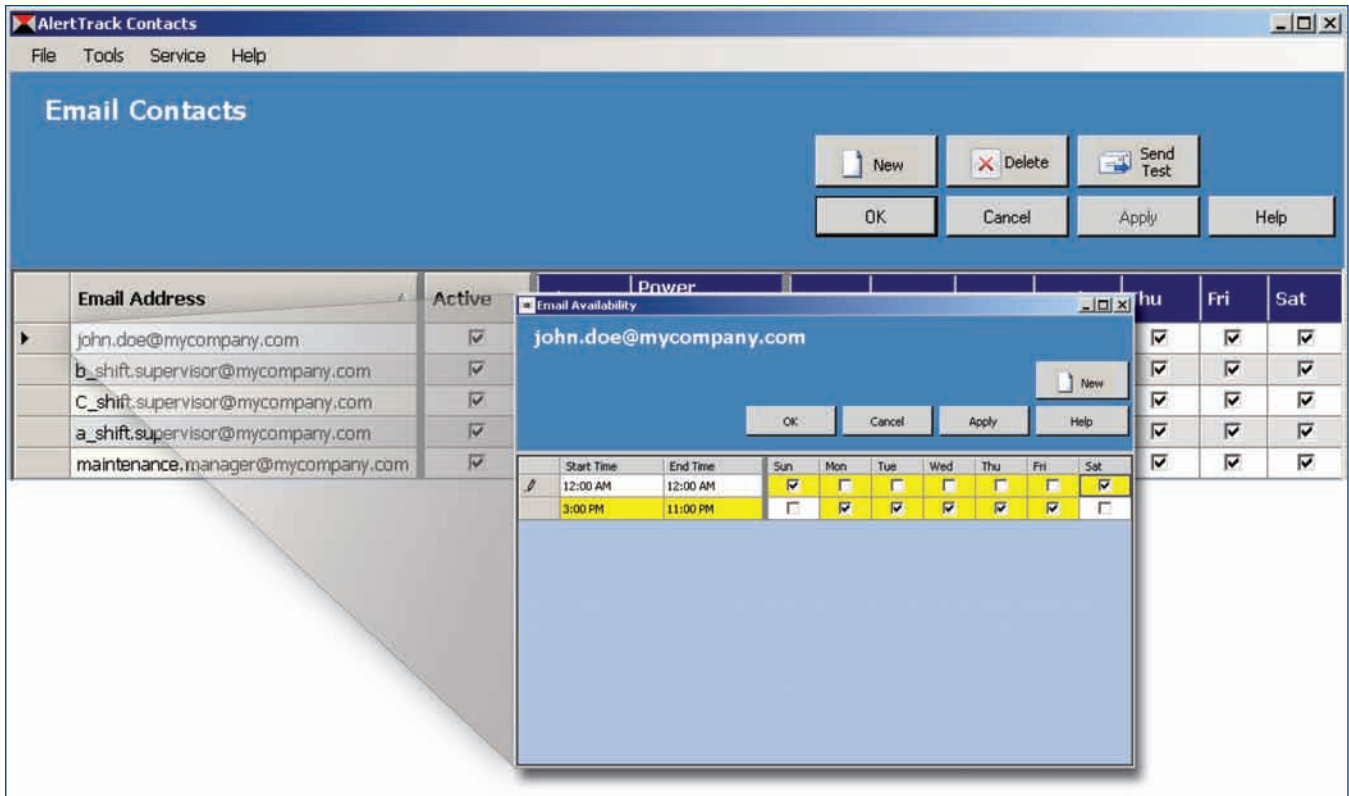
Identify Root Cause and Improve Equipment Life

Imagine a valve in your process begins to cycle more frequently, indicating a process, tuning, or valve assembly problem. The AlertTrack SNAP-ON application will report this excessive rate of change in valve cycles and will help maintenance to determine the root cause.

What happens when you have a heat trace that has tripped leading to a frozen impulse line on your pressure transmitter? The AlertTrack SNAP-ON application will notify you when internal device temperatures fall,

allowing you to save the line before it is frozen. You can keep your device active and accurate, while ensuring that your process keeps running.

Imagine a valve packing leak causes the valve positioner to be exposed to extremely high temperatures. With the AlertTrack SNAP-ON application, this event is automatically documented, evaluated, and reported in the AMS Device Manager Alert Monitor and Audit Trail. An alert is also sent to the technician on duty via cell phone or pager, allowing maintenance to identify and correct the problem before equipment is damaged.



Set alert parameters and route to the right people at the right time.

Routing Alerts

The AlertCast feature in the AlertTrack SNAP-ON application allows you to route alerts by severity level, plant area, and time. You determine who should receive which alerts and when. When a new alert is added to the AMS Device Manager Alert Monitor, AlertCast will determine if the alert conditions (tag name and alert severity level) match your parameters. If the alert matches, an alert message will be distributed to the appropriate contacts.

Prevent Unscheduled Maintenance Downtime

The AlertTrack SNAP-ON application allows you to leverage the advantages of your HART® and FOUNDATION™ fieldbus devices beyond their normal process functions by sending alert messages. AlertCast allows you to send alerts to pre-determined plant personnel via a cell phone, pager, or mobile device for instant notification of device status and process conditions.

With instant access to your critical alerts, you can troubleshoot issues quickly and ensure your process continues with minimal interruption.

The AlertTrack SNAP-ON application is compatible with AMS Device Manager 9.0 and higher. The AlertCast feature is available with AMS Device Manager 10.1 and higher. Please consult the factory for use on AMS Device Manager versions below 9.0.

Emerson Process Management

Asset Optimization Division

12001 Technology Drive
Eden Prairie, MN 55344 USA
T 1(952)832-3206
F 1(952)828-3006

©2009, Emerson Process Management.

The contents of this publication are presented for informational purposes only, and while every effort has been made to ensure their accuracy, they are not to be construed as warranties or guarantees, express or implied, regarding the products or services described herein or their use or applicability. All sales are governed by our terms and conditions, which are available on request. We reserve the right to modify or improve the designs or specifications of our products at any time without notice.

All rights reserved. PlantWeb, AMS, SNAP-ON, and AlertTrack are marks of one of the Emerson Process Management group of companies. The Emerson logo is a trademark and service mark of Emerson Electric Co. All other marks are the property of their respective owners.



AMS Suite: Intelligent Device Manager powers PlantWeb through predictive and proactive maintenance of intelligent field devices to improve availability and performance.