

AMS® Suite: Intelligent Device Manager with DeltaV™

- *Configure, calibrate, and manage your HART®, FOUNDATION™ fieldbus, and WirelssHART™ instruments and valves using a single, integrated application*
- *Seamlessly launch device tasks, methods, and SNAP-ON™ applications*
- *Quickly view enhanced device information*
- *Decrease overall system commissioning and interlock verification time*
- *Achieve system-wide device alerts and automated documentation using Alert Monitor and Audit Trail*

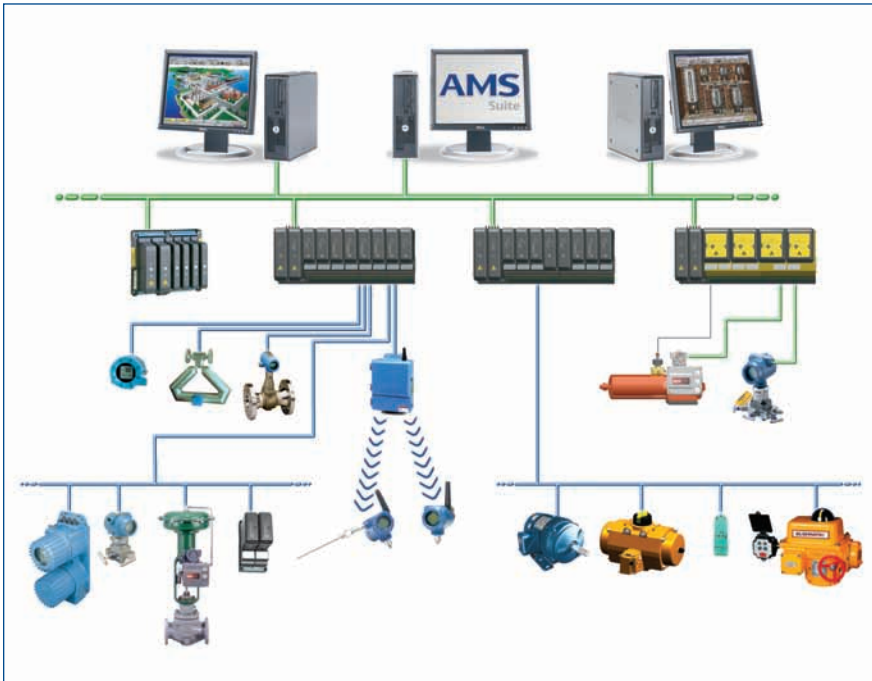


Predict necessary maintenance activities instead of reacting to problems.

Introduction

AMS Device Manager is the premier predictive maintenance software application for instruments and valves available today, providing a single tool for HART, FOUNDATION fieldbus, and WirelessHART device configuration, calibration, documentation, and diagnostics.

AMS Device Manager enables your maintenance team to easily monitor field device health status and resolve potential issues before they become costly problems. When installed onsite, AMS Device Manager and DeltaV work together to deliver a seamless user interface in an integrated operating environment.



Using AMS Device Manager with DeltaV enables you to access important HART, FOUNDATION fieldbus, and WirelessHART device data with no additional cabling or field wiring required!

Benefits

Access the full power of your intelligent field devices.

Using AMS Device Manager with DeltaV, you can configure field devices from the maintenance shop, store device configurations in your plant database, perform device loop tests and calibrations, associate electronic drawings and notes with a particular device, import or export system data, and establish multi-level password security – quickly and easily.

Improve operations and maintenance effectiveness.

AMS Device Manager increases productivity by detecting and diagnosing potential equipment problems before they impact the process, reducing unnecessary and unproductive tasks.

AMS Device Manager's new user interface for supported enhanced EDDL field devices provides engineers and maintenance personnel with a consistent graphical look and feel during device configuration and maintenance.

The enhanced user interface offers operators intuitive graphics to aid in making timely, accurate decisions when abnormal operating conditions occur.

Reduce commissioning time by as much as 50%.

Download configuration information from a single database to a new device using drag-and-drop techniques rather than keying in configuration parameters one at a time.

With FOUNDATION fieldbus devices, device commissioning and replacement is quick and efficient, not requiring interaction with AMS Device Manager.

Improve system availability using Alert Monitor.

AMS Device Manager's Alert Monitor is a powerful diagnostic tool used to observe field devices suspected of periodic or intermittent malfunction – one of the most difficult failure modes to troubleshoot.

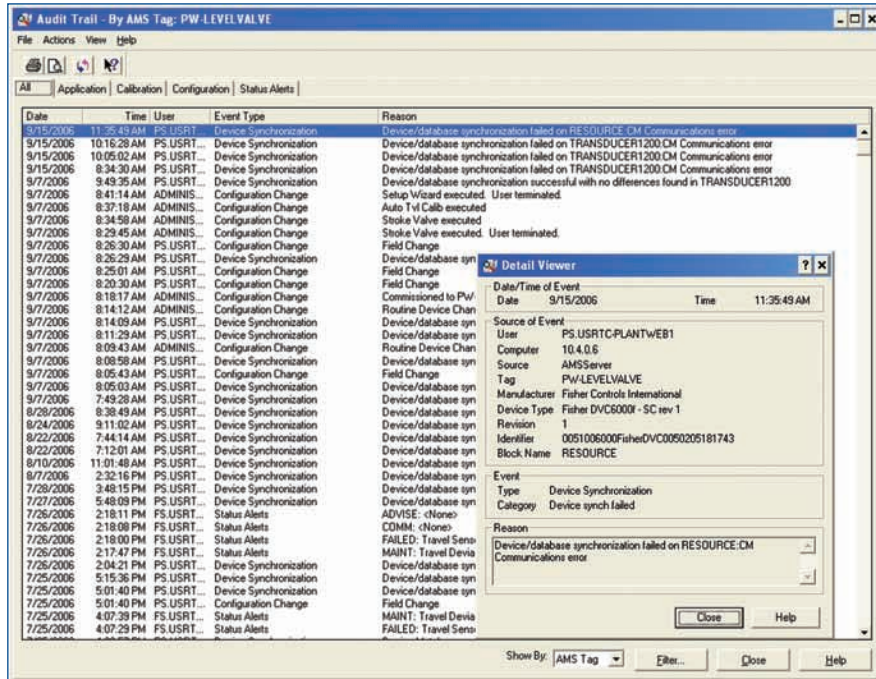
Use Alert Monitor to watch for field device failure patterns and to view device alerts from SNAP-ON applications. The Alert Monitor summary screen provides an overview of all device alerts, regardless of the field device protocol.

Alert Monitor will organize your alerts so you can easily identify new alerts and keep track of existing ones. Filter alerts to quickly find the information you need.

Enhanced smart SIS.

AMS Device Manager is fully compatible with DeltaV workstations as well as the DeltaV SIS Safety Logic Solver. Separate user security is provided for SIS devices that prevents unauthorized "writes" when the logic solver is locked. Faster and safer SIF Proof Tests are delivered, as well as automated documentation for regulatory requirements.

AMS Device Manager with DeltaV



The Audit Trail will capture all system events. Manual entries can also be made if desired.

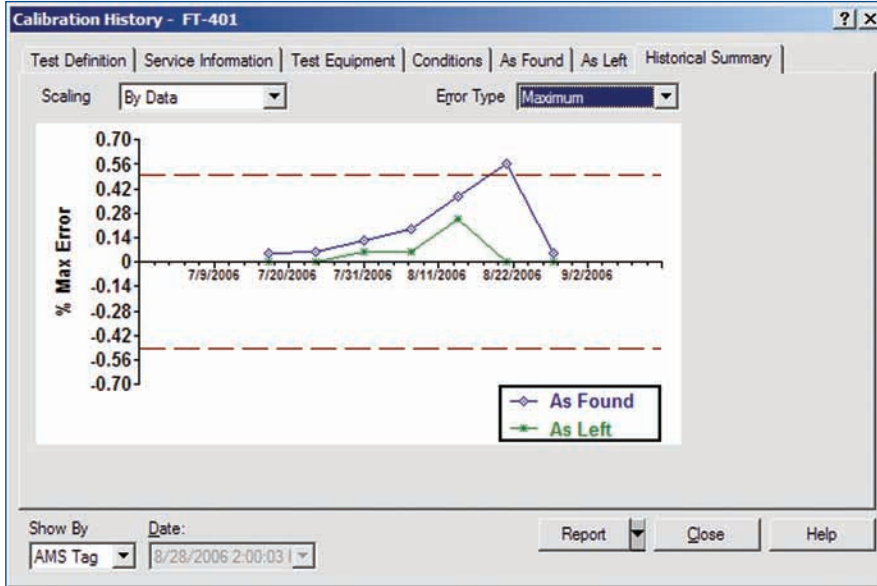
Audit Trail and Handheld Communicator Interface Options

DeltaV users are able to further streamline work practices and gain enhanced diagnostics from AMS Device Manager with the Audit Trail option and the Handheld Communicator Interface Kit.

The Audit Trail automatically generates and saves a historical record in AMS Device Manager for device alerts captured from devices in the scan lists, device configurations, calibration tests, and diagnostics information. All records are date- and time-stamped, and include user and PC correlation. The tabular format of the Audit Trail allows you to

review all configuration changes or focus on a few specific changes. In addition, you can view records for an entire plant or for a single, specific device. To ensure data integrity, historical records cannot be edited.

The Handheld Communicator Interface Kit provides easy download of field device information between Emerson's 375 Field Communicator and AMS Device Manager. You can easily compare HART, FOUNDATION fieldbus, and WirelessHART device configurations, synchronize the database, and delete configurations in a 375 Field Communicator using AMS Device Manager.



Past calibration records for your devices can be reviewed by accessing the Calibration History for each device. This feature can also be used to set the frequency of calibrations for each device.

SNAP-ON Application Options

SNAP-ON applications provide specialized functionality with AMS Device Manager and can be launched directly from DeltaV. Available SNAP-ON applications include:

The **AMS ValveLink® SNAP-ON** application allows you to perform advanced diagnostic tests on Fisher FIELDVUE® HART and FOUNDATION fieldbus digital valve controllers. Supported tests include dynamic error band, drive signal, output signal, step response, and valve signature curve. Test results, performance diagnostics, alert details, and advanced help are also provided.

The **Calibration Assistant SNAP-ON** application supports the use of self-documenting calibrators and allows manual

data entry for standard (non-communicating) field instrumentation. You can set up calibration routes for maintenance activities, track activities, and produce printable calibration reports.

The **QuickCheck™ SNAP-ON** application greatly reduces time to verify interlocks by providing the ability to fix the output of multiple devices for interlock validation. The QuickStep function can be used to create macros for stepping multiple transmitters through validation tests, such as 2oo3 voting logic.

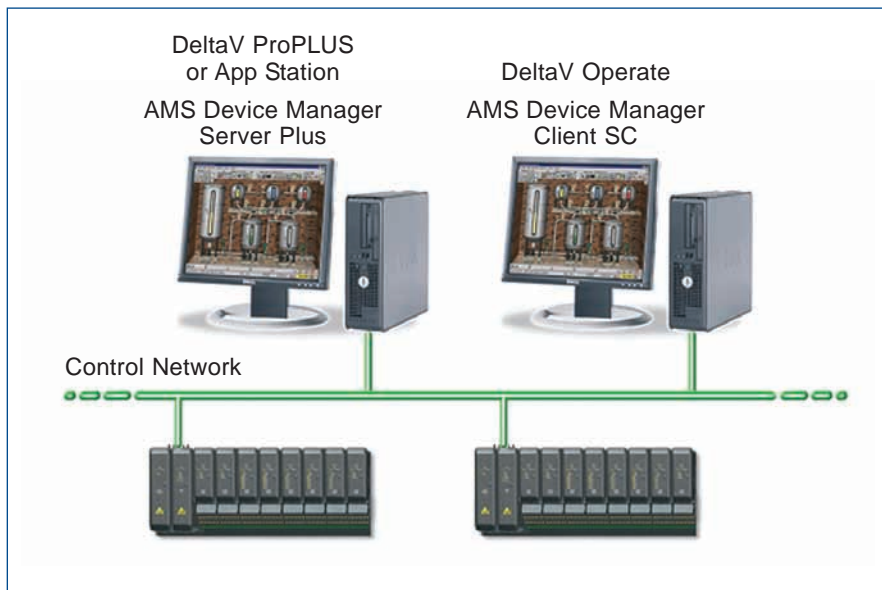
Use the **MV Engineering Assistant SNAP-ON** application to perform extended configuration, maintenance, diagnostics, and testing for Rosemount® HART or FOUNDATION fieldbus MultiVariable transmitters.

The **AlertTrack™ SNAP-ON** application gives you visibility to the health of your field devices and documentation of parameter changes. Group devices and set parameters for testing, then analyze trends to identify problem assets.

The **AMS Wireless SNAP-ON** application gives you more power to manage your wireless networks. Design your network online and validate it against best practices. Once the network is installed, you can graphically view communication paths to easily identify any potential trouble spots.

The **Meter Verification SNAP-ON** application allows you to verify and document the overall health of your Micro Motion® Coriolis mass flowmeters. Schedule meter verification tests in advance to be more proactive in your maintenance efforts.

AMS Device Manager with DeltaV



Use a single, integrated application to manage your instrument and valve assets through AMS Device Manager with DeltaV.

AMS Device Manager Station Types

AMS Device Manager supports two main station types: a Server Plus Station and a Client SC Station.

Each AMS Device Manager system supports a single Server Plus Station and multiple Client SC Stations. The difference between the Server Plus Station and Client SC Stations is that the system database exists on the Server Plus. A Station Configuration utility (available only at the Server Plus Station) configures the distributed system by specifying which Client SC Stations should connect to the Server Plus Station.

Device Access With DeltaV

The DeltaV system simply and quickly passes field device data through the controller to the AMS Device Manager system without the need for extra hardware or wiring. AMS Device Manager stations can be deployed on DeltaV ProfessionalPLUS stations, Application stations, and other compatible DeltaV workstations.

All DeltaV Operator stations have the ability to view FOUNDATION fieldbus device diagnostic status screens when AMS Device Manager has been installed. Full AMS Device Manager capability is provided when an AMS Device Manager Client SC license is included.

AMS Device Manager – DeltaV Compatibility Table

DeltaV	AMS Device Manager						
	6.1	6.2	7.0	8.1	9.0	10.0	
6.3.X	✓	✓	✓ Standalone only, HART only				
6.4.x			✓ Standalone only, HART only				
7.1	✓ Standalone only	✓ Standalone only					
7.2	✓	✓	✓				
7.3		✓	✓	✓ Standalone only	✓ Standalone only		
7.4.x		✓	✓	✓ Standalone only			
8.3			✓				
8.4/8.4.1				✓	✓ Standalone only		
9.3					✓		
10.3						✓	

System Planning and Deployment

Detailed information is available on system planning and deployment options. Please contact your local sales office for specific details to enable deployment of AMS Device Manager with DeltaV.

AMS Suite

AMS Device Manager is part of a family of software applications for predictive diagnostics and performance monitoring on all major industrial plant assets including mechanical equipment, electrical systems, process equipment, instruments and valves. AMS Suite: Asset Portal™ provides a consolidated view of

summary information from the AMS Suite applications and individualized views of prioritized predictive diagnostics for operations, maintenance, and management teams.

Ordering Information

Please contact your local sales office for details on ordering AMS Device Manager.

**Emerson Process Management
Asset Optimization Division**
12001 Technology Drive
Eden Prairie, MN 55344 USA
T 1(952) 828-3206
F 1(952) 828-3006

©2009, Emerson Process Management.

The contents of this publication are presented for informational purposes only, and while every effort has been made to ensure their accuracy, they are not to be construed as warranties or guarantees, express or implied, regarding the products or services described herein or their use or applicability. All sales are governed by our terms and conditions, which are available on request. We reserve the right to modify or improve the designs or specifications of our products at any time without notice. All rights reserved. AMS, DeltaV, Asset Portal, FIELDVUE, Rosemount, Micro Motion, AlertTrack, Asset Portal, QuickCheck, PlantWeb, SNAP-ON, and ValveLink are marks of one of the Emerson Process Management group of companies. The Emerson logo is a trademark and service mark of Emerson Electric Co. All other marks are the property of their respective owners.