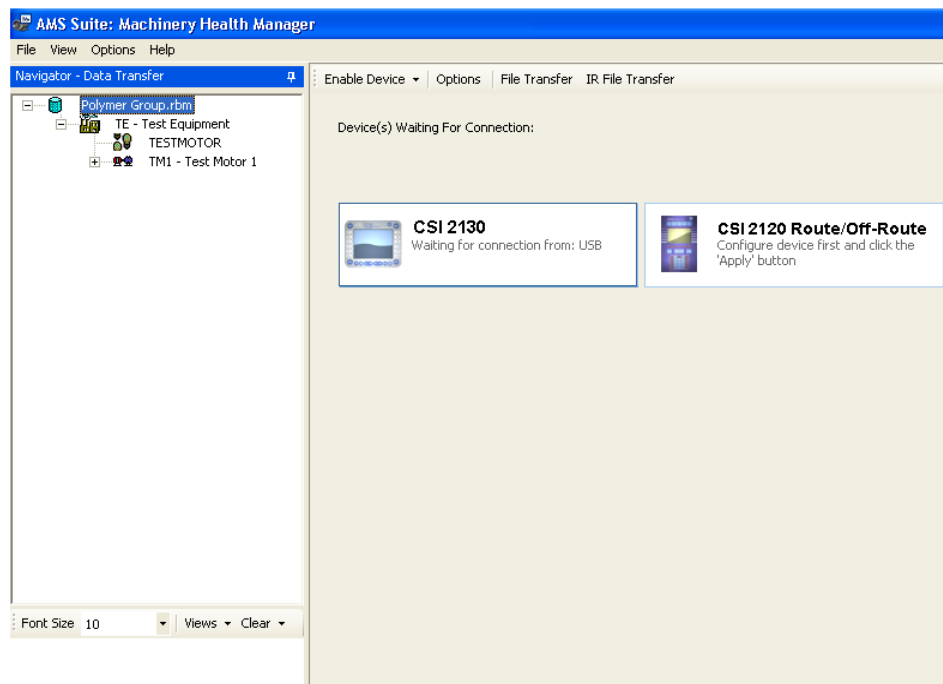


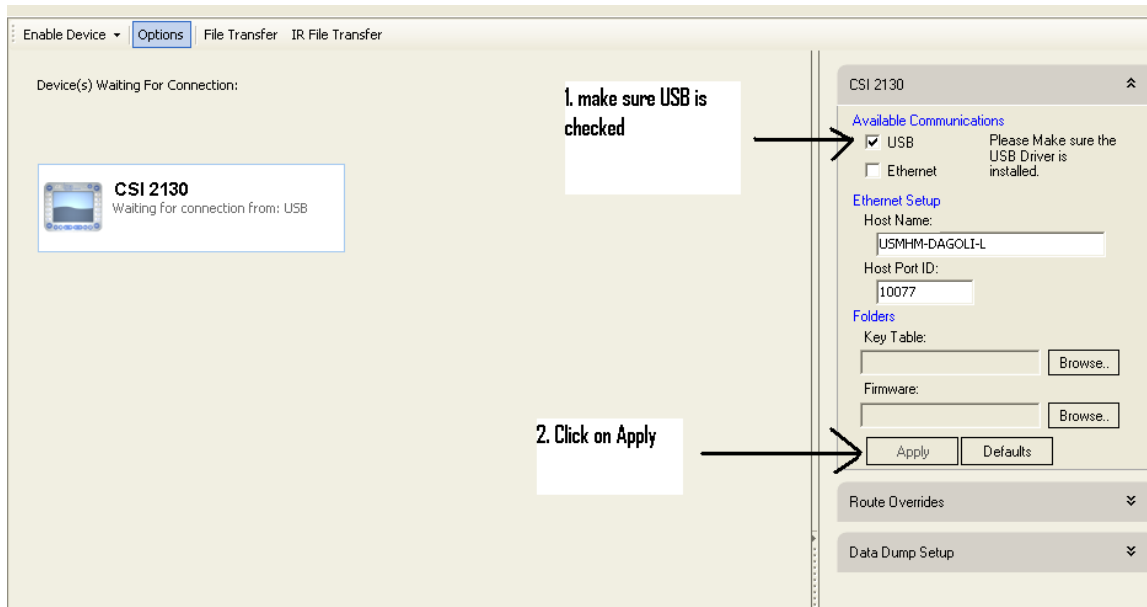
Instructions for Communicating with AMS[®] Suite: Machinery Health Manager 5.0 Using the CSI 2130 Machinery Health[®] Analyzer

1. Download the Internet Data Transfer Client from <http://65.218.164.190/clientinstall/>
2. Right click on Disk1.zip and save it to your desktop.
3. Open the Disk1 folder on your desktop and double-click on setup.exe
4. Follow the instructions on the screen to install the program.
The Internet Data Transfer client will now be installed on your computer.
5. Log in to the Internet Data Transfer client using your user name and password.



6. If there is no .rbm file in the Navigator bar on the left, click File in the upper left corner and then click Add Database. A window will pop up. Click on the database on the right side and then select Add, located in the middle. It will then move to the left side. You should now see the .rbm file in the Navigator window.
7. Open the Navigator bar on the left by clicking on the + signs in front of the database and then Route. You will then see the screen above.

Instructions for Communicating with AMS® Suite: Machinery Health Manager 5.0 Using the CSI 2130 Machinery Health® Analyzer
Page 2

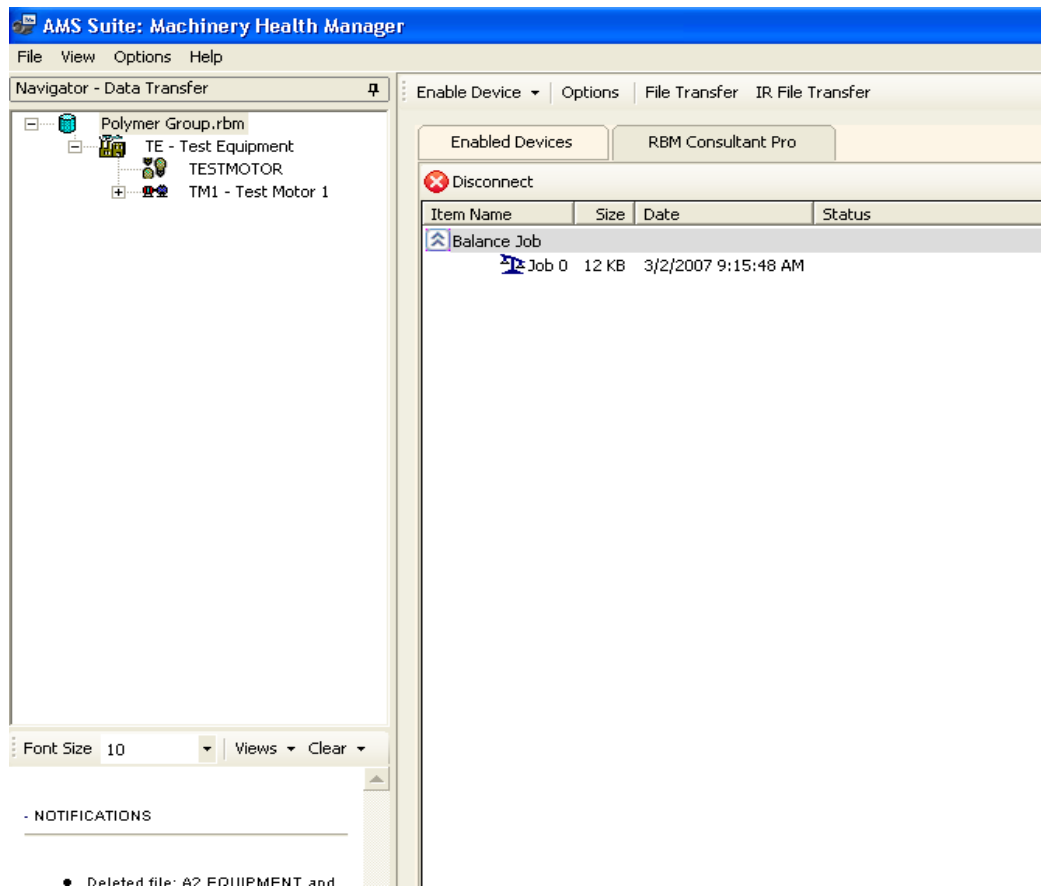


8. The first time you use the Internet Data Transfer client you will need to click the Apply button in the CSI 2130 box located on the right side of the screen. The software defaults to CSI 2130 so CSI 2120 users need to select the Enable Devices tab at the top of the screen and select CSI 2120 to enable it.
9. Connect your CSI 2130 analyzer to your computer using the USB port and connect for transfer. If it does not connect you may need to load the driver located in the program directory. This is normally C: > Program Files > Emerson Process Management > Internet Data Transfer > Drivers

The analyzer will now show up in the right panel of the screen.

Instructions for Communicating with AMS® Suite: Machinery Health Manager 5.0 Using the CSI 2130 Machinery Health® Analyzer

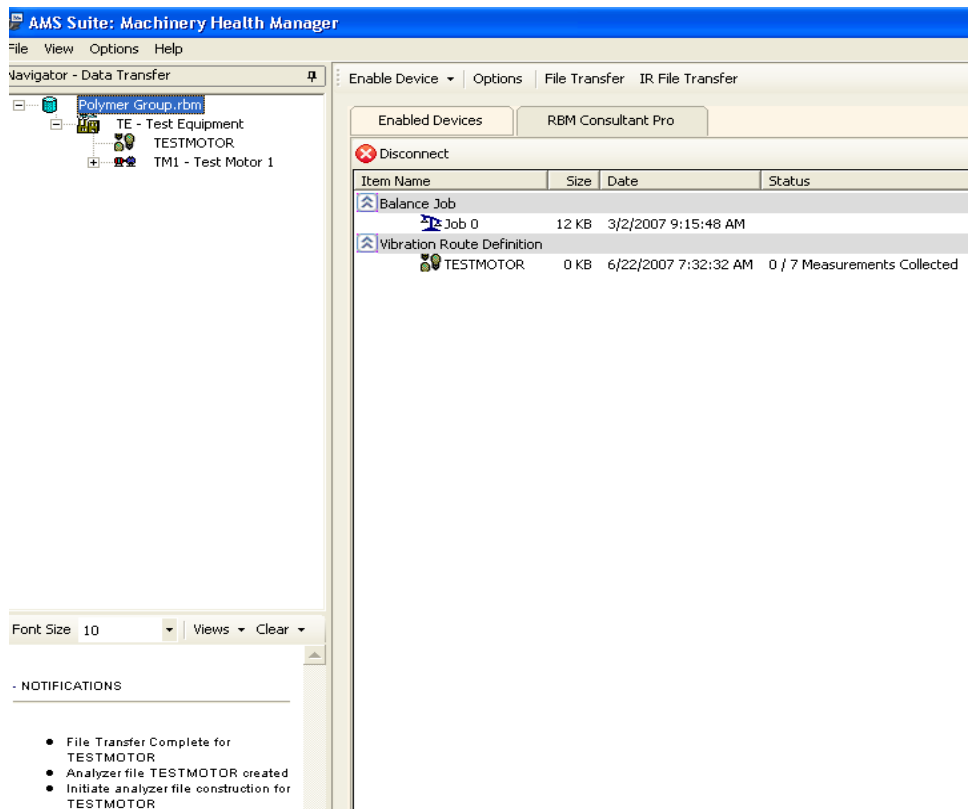
Page 3



10. Select the route that you want to transfer to the meter and drag-and-drop it to the bottom right side of the screen.

Instructions for Communicating with AMS[®] Suite: Machinery Health Manager 5.0 Using the CSI 2130 Machinery Health[®] Analyzer

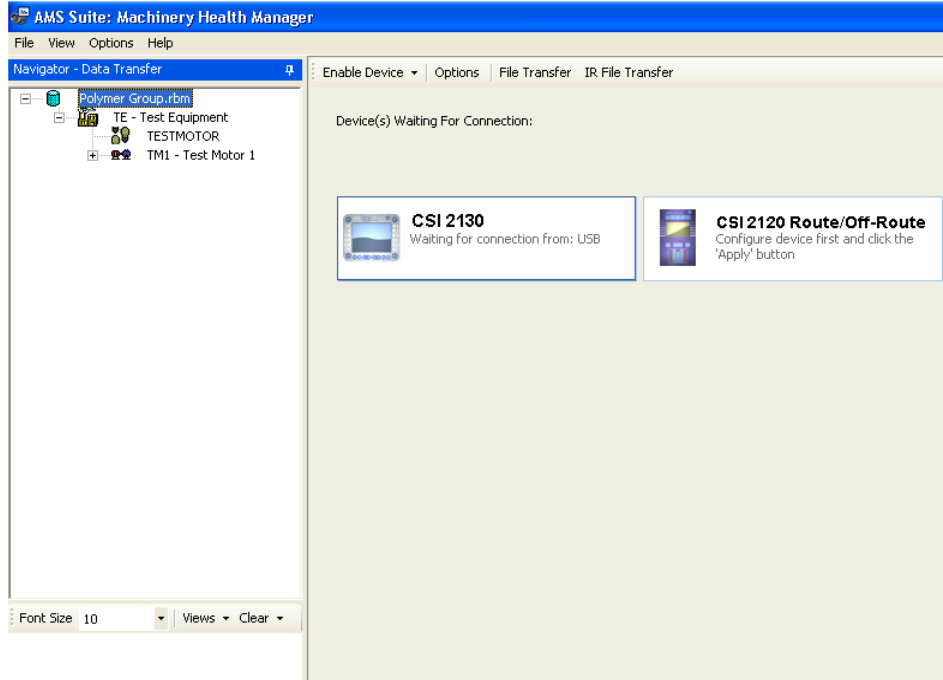
Page 4



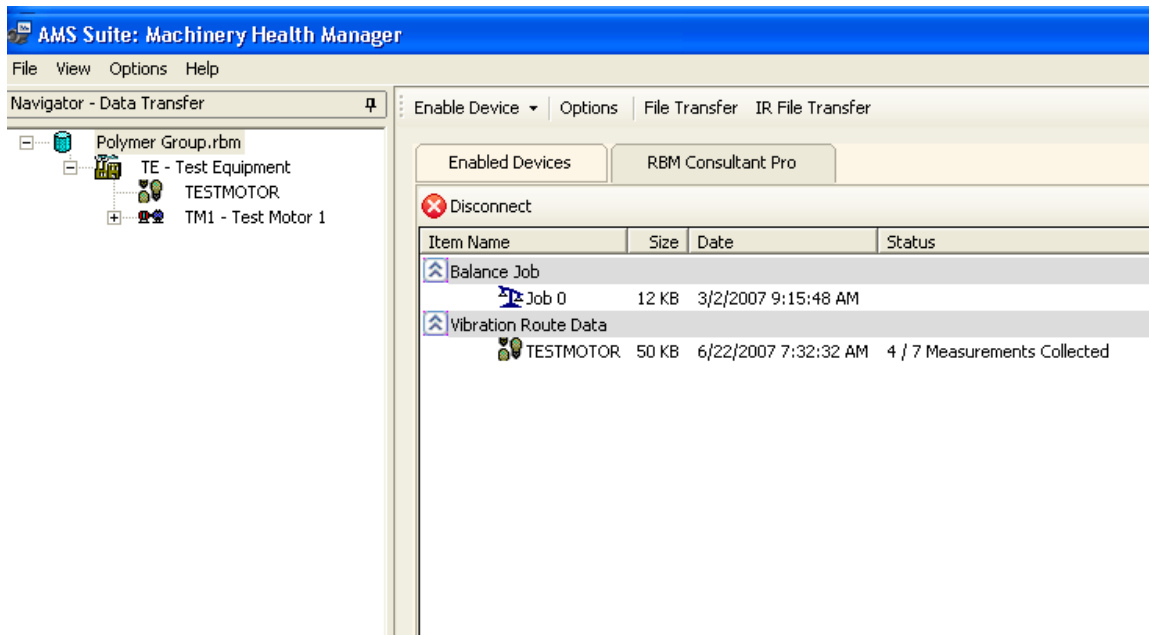
The route file is now loaded to the database located at Emerson Process Management in Knoxville, TN to the meter and shown on the right side of the screen. The bottom left panel on the screen will give a notification showing the action that has been completed.

Collect Data

1. Log in to the Internet Data Transfer client using your user name and password.



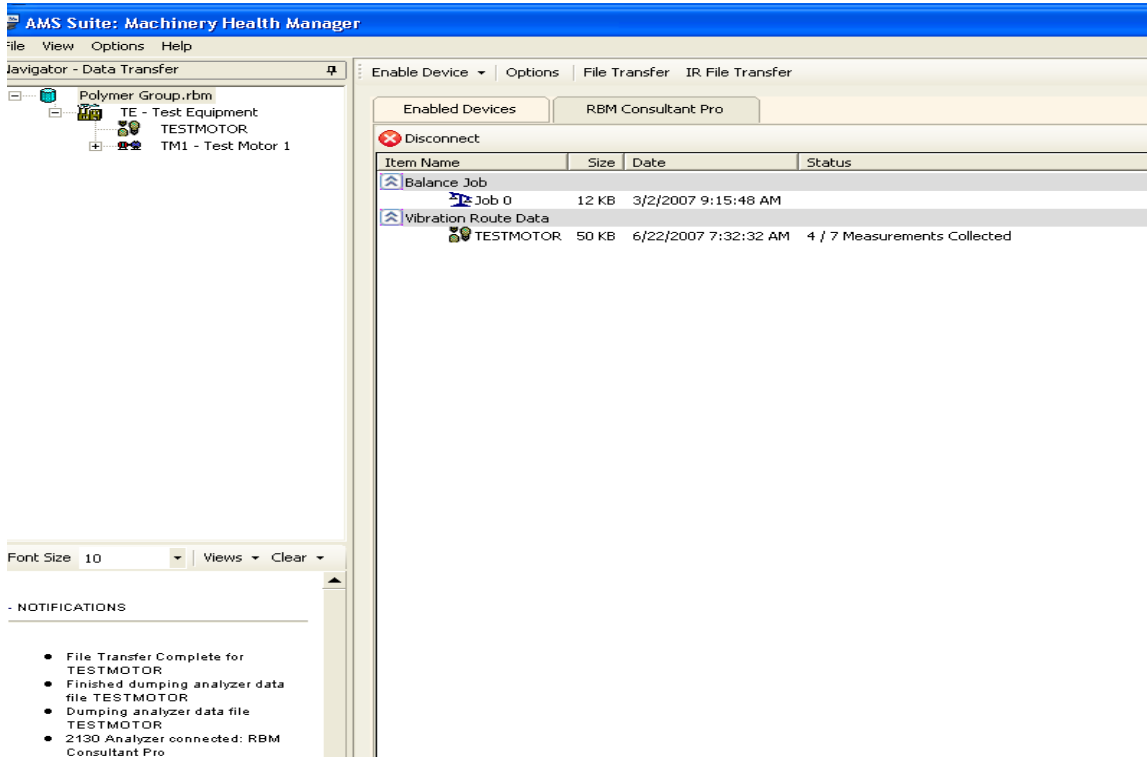
2. Open the Navigator bar on the left by clicking on the + signs in front of the database and then route. This will give you the screen above.
3. Connect your CSI 2130 analyzer to your computer using the USB port and connect for transfer.



Instructions for Communicating with AMS® Suite: Machinery Health Manager 5.0 Using the CSI 2130 Machinery Health® Analyzer
Page 6

The right panel will now show the measurement points collected information next to each route. Select the route on the right panel and drag-and-drop it to the upper left panel where the database and routes are shown.

NOTE: You do not have to place the mouse over a specific route, only over the left Navigator panel.



4. You should see where the file transfer is complete in the lower left panel. The data has now been transferred into the database at Emerson Process Management in Knoxville, TN.

You can now close the Internet Data Transfer client by clicking on the x in the upper right corner of the screen.