

Brooks Service Tool™ for QUANTIM® Coriolis and Delta Class Thermal Mass Flow Products

Description:

The Brooks Service Tool™ and Brooks Service Tool™ Plus are Microsoft® Windows® based applications that provide expanded control for the Brooks QUANTIM® Coriolis and Delta Class thermal mass flow products. The Brooks Service Tool can be used for servicing tasks that include setup, configuration, troubleshooting and tuning. The Brooks Service Tool Plus also provides access to the calibration parameters for Delta Class thermal mass flow products.

Features and Benefits:

- Simple RS-232 connection between a personal computer (PC) and the mass flow device service port for easy plug-and-play installation.
- User-friendly interface running under Microsoft Windows simplifies operation and data capture
- Easy-to-use, menu driven operation with user configurable displays for maximum flexibility
- Automatic recognition and configuration of diagnostic screens appropriate for the connected mass flow device.
- Communicates with all versions of the Brooks QUANTIM Coriolis and Delta Class thermal mass flow products.
- Able to switch control of the mass flow device between the Brooks Service Tool and the process controller for real time on-line diagnostics and tuning.
- Able to capture device log data to comma-delimited (*.CSV) compatible format for easy import into Microsoft Excel®.
- Training by Brooks Technical Service Group is available to quickly bring you up to speed on this or any of the Brooks products.



Figure 1 – Brooks Service Tool™ Running On PC /
QUANTIM Coriolis and Delta Class Mass Flow Products

Brooks® Service Software

STANDARD COMMUNICATION FUNCTIONS:

The Brooks Service Tool can be used to view, control, and modify data such as:

- Flow
- Setpoint
- Alarm Settings
- Analog input/output (I/O) configuration & tuning
- I/O ranging
- Valve tuning
- Diagnostics
- Delta Class Product Flow Calibration Parameters (Brooks Service Tool Plus)

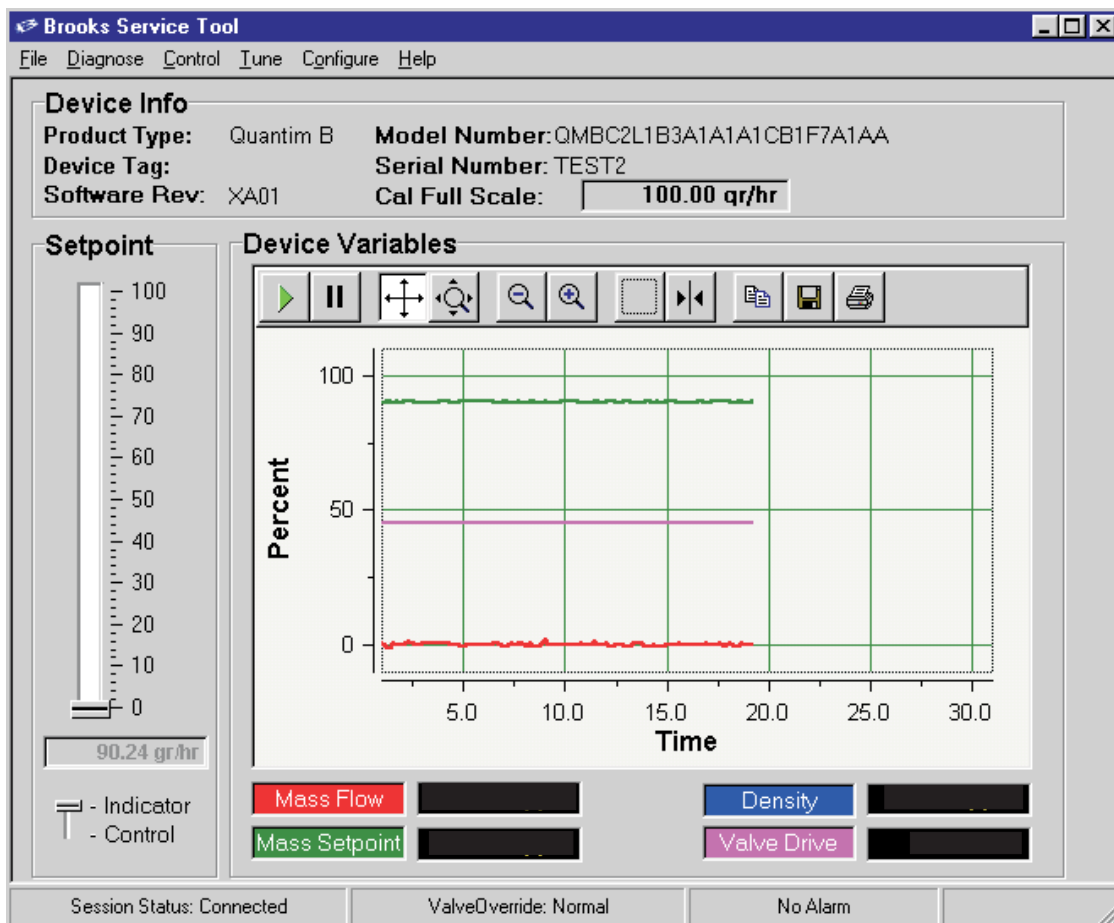


Figure 2 – Main Window

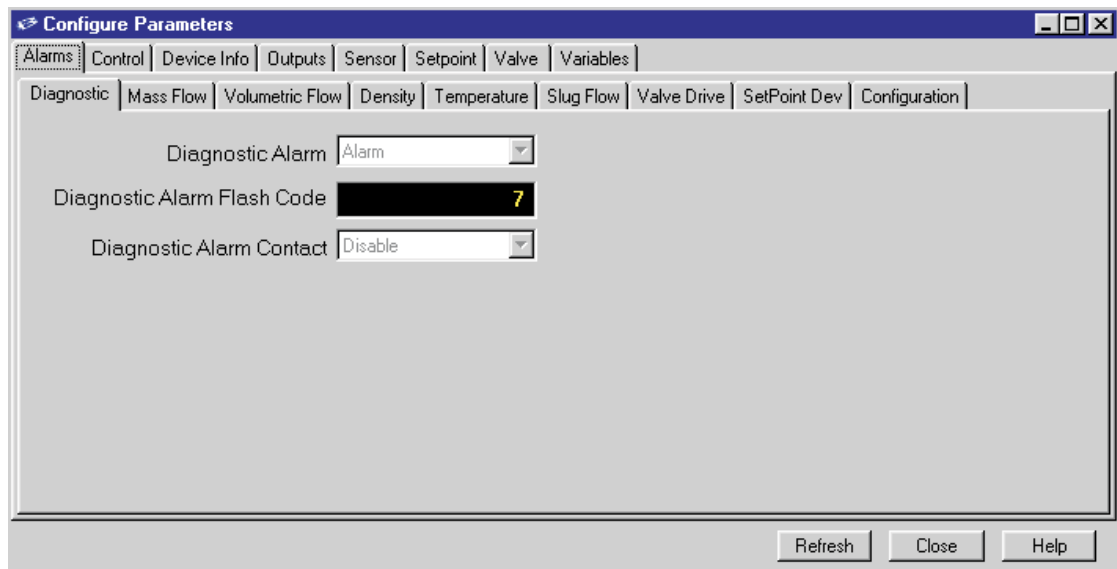


Figure 3 – Configure Parameters Window For Quantim Coriolis Mass Flow Product

SYSTEM REQUIREMENTS:

The Brooks Service Tool application can be installed on a Windows PC under the following requirements:

- Minimum 450 MHz processor speed
- Minimum 64 MB of RAM
- CD-ROM
- Serial Port Or USB Port With USB To Serial Port Adapter
- Windows 95, 98, Me, NT 4, 2000, or XP

INSTALLATION HARDWARE REQUIREMENTS:

The following tools and cables are required to connect the PC serial port to the device service port:

- Communication Cable Kit Part Number S-778-D-023-ZZZ consisting of:
 - RS-232 to TTL communications interface adapter.
 - 3-wire communications cable (between the interface connector and the device service port connector)
 - Standard RS-232 serial cable (required if distance between PC and the device serial port exceeds length of 3-wire communications cable).
- Straight (flat blade) screwdriver
- 3/16-in. nut driver

Brooks® Service Software

BROOKS LOCAL AND WORLDWIDE SUPPORT

Brooks Instrument provides sales and service facilities around the world, ensuring quick delivery from local stock, timely repairs and local based sales and service facilities.

Our dedicated flow experts provide consultation and support, assuring successful applications of the Brooks flow measurement and control products.

Calibration facilities are available in local sales and service offices. The primary standard calibration equipment to calibrate our flow products is certified by our local Weights and Measures Authorities and traceable to the relevant international standards.

START-UP SERVICE AND CALIBRATION

Brooks Instrument can provide start-up service prior to operation when required.

For some process applications, where ISO-9001 Quality Certification is important, it is mandatory to verify and/or (re)calibrate the products periodically. In many cases this service can be provided while replicating actual process conditions, and the results will be traceable to the relevant international quality standards.

CUSTOMER SEMINARS AND TRAINING

Brooks Instrument can provide customer seminars and dedicated training to engineers, end users and maintenance persons. Please contact your nearest sales representative for more details.

HELP DESK

In case you need technical assistance:

Americas ☎ 1-888-554-FLOW
Europe ☎ +(31) 318 549265
Asia ☎ +011-81-3-5633-7105

Due to Brooks Instrument's commitment to continuous improvement of our products, all specifications are subject to change without notice.

TRADEMARKS

Brooks Brooks Instrument Division, Emerson Electric Co.
Brooks Service Tool.. Brooks Instrument Division, Emerson Electric Co.
Emerson Emerson Electric Co.
Excel Microsoft Corporation
Microsoft Microsoft Corporation
QUANTIM Brooks Instrument Division, Emerson Electric Co.
Windows Microsoft Corporation

Specifications subject to change without notice.



**Emerson Process Management
Brooks Instrument**
407 West Vine Street
P.O.Box 903
Hatfield, PA 19440-0903 USA
T (215) 362-3700
F (215) 362-3745
E-Mail BrooksAm@EmersonProcess.com
www.BrooksInstrument.com

**Emerson Process Management
Brooks Instrument B.V.**
Groeneveldselaan 6
P.O. Box 56
3900 AB Veenendaal, Netherlands
T 31-318-549-549
F 31-318-549-559
E-Mail BrooksEu@EmersonProcess.com

**Emerson Japan, Ltd.
Emerson Process Management
Brooks Instrument**
1-4-4 Kitasuna Koto-Ku
Tokyo, 136-0073 Japan
T 011-81-3-5633-7105
F 011-81-3-5633-7124
E-Mail BrooksAs@EmersonProcess.com

