

TopWorx™ 4310 Wireless Position Monitor with On/Off Control Option (Supported Status)

Contents

Introduction	1
Safety Instructions	1
Specifications	2
Inspection and Maintenance Schedules	2
Parts Ordering	2
Installation	3
Operation	4
Maintenance	4
Non-Fisher (OEM) Instruments, Switches, and Accessories	6
Latest Published Instruction Manual	7

Introduction

The product covered in this document is no longer in production. This document, which includes the latest published version of the instruction manual, is made available to provide updates of newer safety procedures. Be sure to follow the safety procedures in this supplement as well as the specific instructions in the included instruction manual.

Part numbers in the included instruction manual should not be relied on to order replacement parts. For replacement parts, contact your [Emerson Process Management sales office](#).



For more than 20 years, Fisher products have been manufactured with asbestos-free components. The included manual might mention asbestos containing parts. Since 1988, any gasket or packing which may have contained some asbestos, has been replaced by a suitable non-asbestos material. Replacement parts in other materials are available from your sales office.

Safety Instructions

Please read these safety warnings, cautions, and instructions carefully before using the product.

These instructions cannot cover every installation and situation. Do not install, operate, or maintain this product without being fully trained and qualified in valve, actuator and accessory installation, operation and maintenance. To avoid personal injury or property damage it is important to carefully read, understand, and follow all of the contents of

this manual, including all safety cautions and warnings. If you have any questions about these instructions, contact your Emerson Process Management sales office before proceeding.

Specifications

This product was intended for a specific range of service conditions--pressure, pressure drop, process and ambient temperature, temperature variations, process fluid, and possibly other specifications. Do not expose the product to service conditions or variables other than those for which the product was intended. If you are not sure what these conditions or variables are, contact your [Emerson Process Management sales office](#) for assistance. Provide the product serial number and all other pertinent information that you have available.

Inspection and Maintenance Schedules

All products must be inspected periodically and maintained as needed. The schedule for inspection can only be determined based on the severity of your service conditions. Your installation might also be subject to inspection schedules set by applicable governmental codes and regulations, industry standards, company standards, or plant standards.

In order to avoid increasing dust explosion risk, periodically clean dust deposits from all equipment.

When equipment is installed in a hazardous area location (potentially explosive atmosphere), prevent sparks by proper tool selection and avoiding other types of impact energy. Control Valve surface temperature is dependent upon process operating conditions.

▲ WARNING

Control valve surface temperature is dependent upon process operating conditions. Personal injury or property damage, caused by fire or explosion, can result if the valve body surface temperature exceeds the acceptable temperature for the hazardous area classification. To avoid an increase of instrumentation and/or accessory surface temperature due to process operating conditions, ensure adequate ventilation, shielding, or insulation of control valve components installed in a potentially hazardous or explosive atmosphere.

Parts Ordering

Whenever ordering parts for older products, always specify the serial number of the product and provide all other pertinent information that you can, such as product size, part material, age of the product, and general service conditions. If you have modified the product since it was originally purchased, include that information with your request.

▲ WARNING

Use only genuine Fisher replacement parts. Components that are not supplied by Emerson Process Management should not, under any circumstances, be used in any Fisher product. Use of components not supplied by Emerson Process Management may void your warranty, might adversely affect the performance of the product and could result in personal injury and property damage.

Installation

⚠ WARNING

Avoid personal injury or property damage from sudden release of process pressure or bursting of parts. Before mounting the product:

- Do not install any system component where service conditions could exceed the limits given in this manual or the limits on the appropriate nameplates. Use pressure-relieving devices as required by government or accepted industry codes and good engineering practices.
- Always wear protective gloves, clothing, and eyewear when performing any installation operations.
- Do not remove the actuator from the valve while the valve is still pressurized.
- Disconnect any operating lines providing air pressure, electric power, or a control signal to the actuator. Be sure the actuator cannot suddenly open or close the valve.
- Use bypass valves or completely shut off the process to isolate the valve from process pressure. Relieve process pressure from both sides of the valve.
- Vent the pneumatic actuator loading pressure and relieve any actuator spring precompression so the actuator is not applying force to the valve stem; this will allow for the safe removal of the stem connector.
- Use lock-out procedures to be sure that the above measures stay in effect while you work on the equipment.
- The valve packing box might contain process fluids that are pressurized, *even when the valve has been removed from the pipeline*. Process fluids might spray out under pressure when removing the packing hardware or packing rings, or when loosening the packing box pipe plug. Cautiously remove parts so that fluid escapes slowly and safely.
- The instrument is capable of supplying full supply pressure to connected equipment. To avoid personal injury and equipment damage, caused by sudden release of process pressure or bursting of parts, make sure the supply pressure never exceeds the maximum safe working pressure of any connected equipment.
- Severe personal injury or property damage may occur from an uncontrolled process if the instrument air supply is not clean, dry and oil-free, or noncorrosive gas. While use and regular maintenance of a filter that removes particles larger than 40 microns will suffice in most applications, check with an Emerson Process Management field office and Industry Instrument air quality standards for use with corrosive gas or if you are unsure about the proper amount or method of air filtration or filter maintenance.
- For corrosive media, make sure the tubing and instrument components that contact the corrosive media are of suitable corrosion-resistant material. The use of unsuitable materials might result in personal injury or property damage due to the uncontrolled release of the corrosive media.
- If natural gas or other flammable or hazardous gas is to be used as the supply pressure medium and preventive measures are not taken, personal injury and property damage could result from fire or explosion of accumulated gas or from contact with hazardous gas. Preventive measures may include, but are not limited to: Remote venting of the unit, re-evaluating the hazardous area classification, ensuring adequate ventilation, and the removal of any ignition sources.
- To avoid personal injury or property damage resulting from the sudden release of process pressure, use a high-pressure regulator system when operating the controller or transmitter from a high-pressure source.

The instrument or instrument/actuator assembly does not form a gas-tight seal, and when the assembly is in an enclosed area, a remote vent line, adequate ventilation, and necessary safety measures should be used. Vent line piping should comply with local and regional codes and should be as short as possible with adequate inside diameter and few bends to reduce case pressure buildup. However, a remote vent pipe alone cannot be relied upon to remove all hazardous gas, and leaks may still occur.

- Personal injury or property damage can result from the discharge of static electricity when flammable or hazardous gases are present. Connect a 14 AWG (2.08 mm²) ground strap between the instrument and earth ground when flammable or hazardous gases are present. Refer to national and local codes and standards for grounding requirements.
- Personal injury or property damage caused by fire or explosion may occur if electrical connections are attempted in an area that contains a potentially explosive atmosphere or has been classified as hazardous. Confirm that area classification and atmosphere conditions permit the safe removal of covers before proceeding.

- For instruments with a hollow liquid level displacer, the displacer might retain process fluid or pressure. Personal injury or property damage due to sudden release of pressure, contact with hazardous fluid, fire, or explosion can be caused by puncturing, heating, or repairing a displacer that is retaining process pressure or fluid. This danger may not be readily apparent when disassembling the sensor or removing the displacer. Before disassembling the sensor or removing the displacer, observe the appropriate warnings provided in the sensor instruction manual.
- Personal injury or property damage, caused by fire or explosion from the leakage of flammable or hazardous gas, can result if a suitable conduit seal is not installed. For explosion-proof applications, install the seal no more than 457 mm (18 inches) from the instrument when required by the nameplate. For ATEX applications use the proper cable gland certified to the required category. Equipment must be installed per local and national electric codes.
- Check with your process or safety engineer for any additional measures that must be taken to protect against process media.
- If installing into an existing application, also refer to the WARNING in the Maintenance section.

Special Instructions for Safe Use and Installations in Hazardous Locations

Certain nameplates may carry more than one approval, and each approval may have unique installation requirements and/or conditions of safe use. Special instructions are listed by agency/approval. To get these instructions, contact [Emerson Process Management sales office](#). Read and understand these special conditions of use before installing.

⚠ WARNING

Failure to follow conditions of safe use could result in personal injury or property damage from fire or explosion, or area re-classification.

Operation

With instruments, switches, and other accessories that are controlling valves or other final control elements, it is possible to lose control of the final control element when you adjust or calibrate the instrument. If it is necessary to take the instrument out of service for calibration or other adjustments, observe the following warning before proceeding.

⚠ WARNING

Avoid personal injury or equipment damage from uncontrolled process. Provide some temporary means of control for the process before taking the instrument out of service.

Maintenance

⚠ WARNING

Before performing any maintenance operations on an actuator-mounted instrument or accessory:

- To avoid personal injury, always wear protective gloves, clothing, and eyewear.
- Provide some temporary measure of control to the process before taking the instrument out of service.
- Provide a means of containing the process fluid before removing any measurement devices from the process.
- Disconnect any operating lines providing air pressure, electric power, or a control signal to the actuator. Be sure the actuator cannot suddenly open or close the valve.
- Use bypass valves or completely shut off the process to isolate the valve from process pressure. Relieve process pressure from both sides of the valve.
- Vent the pneumatic actuator loading pressure and relieve any actuator spring precompression so the actuator is not applying force to the valve stem; this will allow for the safe removal of the stem connector.
- Personal injury or property damage may result from fire or explosion if natural gas or other flammable or hazardous gas is used as the supply medium and preventive measures are not taken. Preventive measures may include, but are not limited to: Remote venting of the unit, re-evaluating the hazardous area classification, ensuring adequate ventilation, and the removal of any ignition sources. For information on remote venting of this instrument, refer to the Installation section.
- Use lock-out procedures to be sure that the above measures stay in effect while you work on the equipment.
- The valve packing box might contain process fluids that are pressurized, *even when the valve has been removed from the pipeline*. Process fluids might spray out under pressure when removing the packing hardware or packing rings, or when loosening the packing box pipe plug. Cautiously remove parts so that fluid escapes slowly and safely.
- Check with your process or safety engineer for any additional measures that must be taken to protect against process media.
- On an explosion-proof instrument, remove the electrical power before removing the instrument covers in a hazardous area. Personal injury or property damage may result from fire and explosion if power is applied to the instrument with the covers removed.

Instruments Mounted on Tank or Cage

⚠ WARNING

For instruments mounted on a tank or displacer cage, release trapped pressure from the tank and lower the liquid level to a point below the connection. This precaution is necessary to avoid personal injury from contact with the process fluid.

Instruments With a Hollow Displacer or Float

⚠ WARNING

For instruments with a hollow liquid level displacer, the displacer might retain process fluid or pressure. Personal injury and property might result from sudden release of this pressure or fluid. Contact with hazardous fluid, fire, or explosion can be caused by puncturing, heating, or repairing a displacer that is retaining process pressure or fluid. This danger may not be readily apparent when disassembling the sensor or removing the displacer. A displacer that has been penetrated by process pressure or fluid might contain:

- pressure as a result of being in a pressurized vessel
- liquid that becomes pressurized due to a change in temperature
- liquid that is flammable, hazardous or corrosive.

Handle the displacer with care. Consider the characteristics of the specific process liquid in use. Before removing the displacer, observe the appropriate warnings provided in the sensor instruction manual.

Non-Fisher (OEM) Instruments, Switches, and Accessories

Installation, Operation, and Maintenance

Refer to the original manufacturer's documentation for Installation, Operation and Maintenance safety information.

Neither Emerson, Emerson Process Management, nor any of their affiliated entities assumes responsibility for the selection, use or maintenance of any product. Responsibility for proper selection, use, and maintenance of any product remains solely with the purchaser and end user.

Fisher is a mark owned by one of the companies in the Emerson Process Management business unit of Emerson Electric Co. Emerson Process Management, Emerson, and the Emerson logo are trademarks and service marks of Emerson Electric Co. All other marks are the property of their respective owners.

The contents of this publication are presented for informational purposes only, and while every effort has been made to ensure their accuracy, they are not to be construed as warranties or guarantees, express or implied, regarding the products or services described herein or their use or applicability. All sales are governed by our terms and conditions, which are available upon request. We reserve the right to modify or improve the designs or specifications of such products at any time without notice.

Emerson Process Management
Marshalltown, Iowa 50158 USA
Sorocaba, 18087 Brazil
Cernay, 68700 France
Dubai, United Arab Emirates
Singapore 128461 Singapore

www.Fisher.com

TopWorx™ 4310 Wireless Position Monitor with On/Off Control Option

This manual applies to

Device Type	E0CE (Hex) 57550 (decimal)
Device Revision	4
Firmware Revision	5
DD Revision	1

Contents

Introduction	2
Scope of Manual	2
Description	2
Terminology	4
Specifications	4
FCC Compliance	4
Educational Services	4
Installation	9
Installing Standard and Extended Life Power Module	10
Installing Unit Supplied with External Power Option	10
Network Setup	12
Using the Field Communicator	12
Using AMS Wireless Configurator or AMS Device Manager	13
Hazardous Area Classifications and Special Instructions for “Safe Use” and Installations in Hazardous Locations	15
Valve / Actuator Mounting	19
Sliding-Stem (Linear) Actuators (e.g. Fisher™ 667)	21
Guidelines for Mounting on Quarter-Turn (Rotary-Shaft) Actuators	22
Pneumatic Hookup Procedure for On/Off Control Option	24
Vent	26
Communication Connections	26
Wireless Communications	26
Basic Setup	28
Using the Local User Interface	28
Identifying Device Revision	29
Language Selection	29
Quick Position	29
Status	30
Power	30

Figure 1. TopWorx 4310 Wireless Position Monitor, with On/Off Control Option



Network	30
Calibrate	31
Using the Field Communicator	33
Overview	33
Configure	35
Service Tools	46
Accessing Features	53
Trip Points and Deadband	53
Diagnostic Features	53
Locate	57
Maintenance	58
Instrument Troubleshooting	59
Replacing the Instrument	60
Instrument Removal	60
Replacing the Magnetic Feedback Assembly	61
Replacing the Power Module	61
Removal	61
Installation	61
Resetting Power Module Variables	62
Component Maintenance—On/Off Control Option	63
Spool Valve and Pneumatic Gasket Removal	63
Spool Valve and Pneumatic Gasket Installation	64
Pneumatic Interface and Gasket Removal	64
Pneumatic Interface and Gasket Installation	65
Filter Replacement	65

Contents (continued)

Parts	66
Repair Kits	66
Replaceable Parts	66

Introduction

Scope of Manual

This instruction manual includes specifications, installation, basic setup and configuration, and maintenance and troubleshooting information for the TopWorx 4310.

This manual describes using the local interface or a Field Communicator to setup and calibrate the instrument.

Do not install, operate, or maintain a TopWorx 4310 without being fully trained and qualified in valve, actuator, and accessory installation, operation, and maintenance. To avoid personal injury or property damage, it is important to carefully read, understand, and follow all of the contents of this manual, including all safety cautions and warnings. If you have any questions about these instructions, contact your [Emerson Process Management sales office](#) before proceeding.

Description

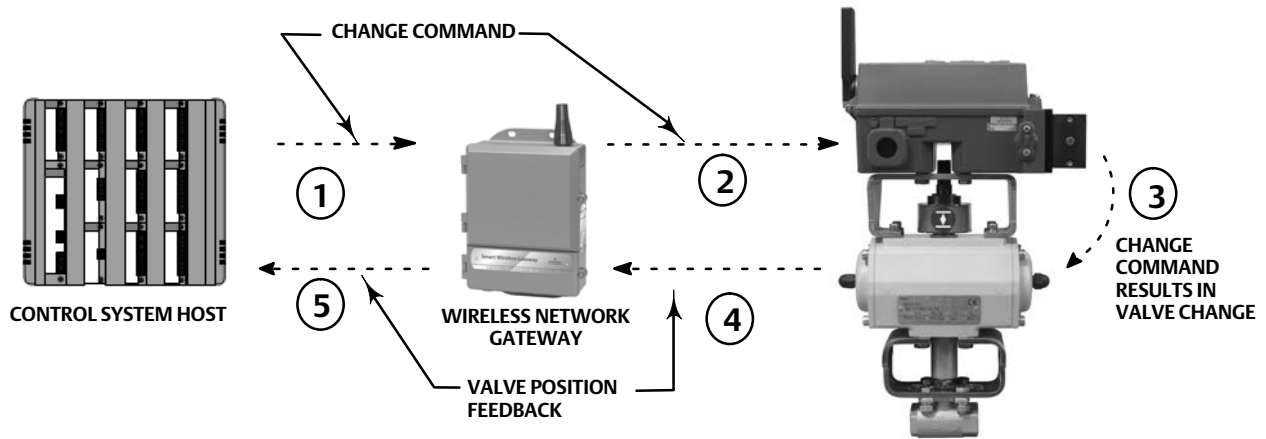
Valve position is sensed through the non-contact, linkage-less feedback sensor. There are no moving linkages and the 4310 is physically separated from the valve stem through the use of a magnetic Hall effect sensor. A magnetic array is mounted to the valve stem and the sensor is embedded in the 4310 housing. The sensor is electrically connected to the printed wiring board to provide a travel feedback signal used in the control algorithm.

On/Off Control Option

The 4310 on/off controller relays a digital set point generated by a control host to deliver a discrete (open/closed) control action to a valve actuator. Valve position feedback provides confirmation of the control action, as shown in figure 2. The valve command is converted to a pneumatic output signal. The pneumatic output is connected to the supply pressure, and depending on set point, will either open or close the valve. The output can be used with either air-to-open or air-to-close and supports both single and double-acting actuators. When a single-acting actuator is used it is necessary to plug one of the output ports on the spool valve.

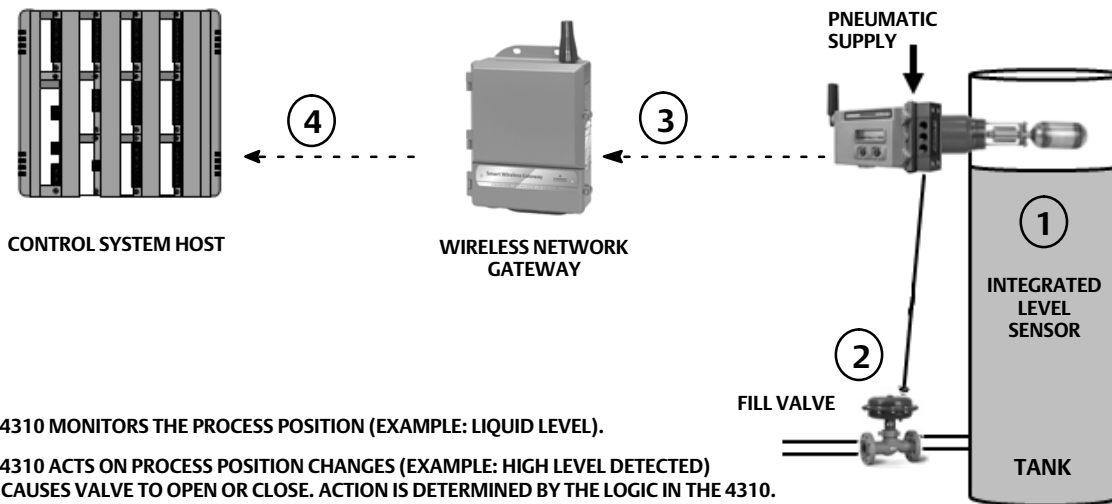
The on/off control device can also be configured as a snap-acting controller. In this configuration, there is no feedback signal for the controlled equipment. The state of the monitored process triggers a command to the controlled valve. The control system is alerted to changes in the process and the valve command, but the control action remains in the field instrument. The 4310 uses the position signal, switch thresholds, and snap-control mode setting to decide when to open or close the valve. For example, in figure 3, when a high level in the storage tank is reached, the 4310 closes the inlet valve. In direct-acting snap, high or open trip on the input causes the controlled valve to open, and low/closed trip on the input causes the controlled valve to close. In reverse-acting snap, high/open trip causes the controlled valve to close, and low/closed trip causes the controlled valve to open.

Figure 2. Control Operation—Wireless Automated Valve



- ① COMMAND TO MAKE A VALVE CHANGE STARTS AT THE CONTROL SYSTEM HOST AND IS SENT TO THE GATEWAY.
- ② THE GATEWAY ROUTES THE VALVE CHANGE COMMAND TO THE 4310.
- ③ THE 4310 ACTS ON THE VALVE COMMAND AND MAKES VALVE CHANGE.
- ④ THE 4310 MONITORS VALVE POSITION AND SENDS UPDATES TO THE GATEWAY.
- ⑤ THE GATEWAY PROVIDES CURRENT VALVE POSITION DATA TO CONTROL SYSTEM HOST. THE VALVE POSITION FEEDBACK IS USED TO CONFIRM THAT THE REQUESTED ACTION “COMMAND” WAS PERFORMED.

Figure 3. Control Operation—Snap-Acting Control



- ① THE 4310 MONITORS THE PROCESS POSITION (EXAMPLE: LIQUID LEVEL).
- ② THE 4310 ACTS ON PROCESS POSITION CHANGES (EXAMPLE: HIGH LEVEL DETECTED) AND CAUSES VALVE TO OPEN OR CLOSE. ACTION IS DETERMINED BY THE LOGIC IN THE 4310.
- ③ THE 4310 SENDS POSITION AND OUTPUT STATE UPDATES TO GATEWAY.
- ④ THE GATEWAY PROVIDES THE CURRENT PROCESS POSITION DATA AND VALVE OUTPUT COMMAND TO THE CONTROL SYSTEM HOST.

Terminology

Local Interface—All 4310's come standard with a Liquid Crystal Display (LCD) and two (2) pushbuttons. The local interface provides the capability to setup and calibrate the monitor.

Magnet Assembly—This is the feedback component that is mounted directly to the valve stem. It supplies a magnetic field that is sensed by the 4310. This component is typically part of most mounting kit assemblies.

Specifications

Specifications for the 4310 are shown in table 1.

FCC Compliance

This equipment has been tested and found to comply with the limits for a Class A digital device, pursuant to part 15 of the FCC Rules. These limits are designed to provide reasonable protection against harmful interference when the equipment is operated in a commercial environment. This equipment generates, uses, and can radiate radio frequency energy and, if not installed and used in accordance with this instruction manual, may cause harmful interference to radio communications. Operation of this equipment in a residential area is likely to cause harmful interference in which case the user will be required to correct the interference at his own expense.

This product is an FCC approved device. Changes or modifications to the 4310 that are not expressly approved by the party responsible for compliance may void your authority to operate the device.

⚠ WARNING

This product is intended for a specific temperature range and other application specifications. Failure to adhere to these specifications could result in the malfunction of the product, property damage, or personal injury.

Educational Services

For information on available courses for the 4310, as well as a variety of other products, contact:

Emerson Process Management
Educational Services, Registration
Phone: +1-641-754-3771 or +1-800-338-8158
e-mail: education@emerson.com
<http://www.emersonprocess.com/education>



Table 1. Specifications

<p>Available Mountings</p> <ul style="list-style-type: none"> ■ Quarter-turn rotary-shaft ■ sliding-stem or ■ linear applications <p>Can also be mounted on other actuators that comply with IEC 60534-6-1, IEC 60534-6-2, VDI/VDE 3845 and NAMUR mounting standards</p> <p>Input Measurement (Valve or Process)</p> <p>Stem Travel (linear movement) <i>Minimum:</i> 2.5 mm (0.10 inch) <i>Maximum:</i> 210 mm (8.25 inches)</p> <p>Shaft Rotation (rotary movement) <i>Minimum:</i> 45° <i>Maximum:</i> 90°</p> <p>Shaft Rotation (rotary movement, arced array) <i>Minimum:</i> 13° <i>Maximum:</i> 30°</p> <p>Measurement Output</p> <p>Discrete: on/off switches (2)</p> <p>On/Off Control</p> <p>Output Signal</p> <p>Pneumatic signal as required by the actuator, up to 95% of supply pressure</p> <p><i>Minimum Span:</i> 3.1 bar (45 psig) <i>Maximum Span:</i> 7 bar (101 psig) Action: Single or Double Acting</p> <p>Supply Pressure</p> <p><i>Minimum:</i> 3.1 bar (45 psig) <i>Maximum:</i> 7 bar (101 psig)</p> <p>Supply Medium</p> <p>Air or Natural Gas</p> <p>Supply medium must be clean, dry, and non-corrosive. The supply air at the device should have a dew point less than -20°C (-4°F). Refer to ATEX and IECEx Special Conditions of Safe Use on page 15 for additional information on use of natural gas as supply medium.</p> <p>Per ISA Standard 7.0.01</p> <p>A maximum 40 micrometer particle size in the air system is acceptable. Further filtration down to 5 micrometer particle size is recommended. Lubricant content is not to exceed 1 ppm weight (w/w) or volume (v/v) basis. Condensation in the air supply should be minimized.</p>	<p>Per ISO 8573-1 <i>Maximum particle density size:</i> Class 7 <i>Oil content:</i> Class 3 <i>Pressure Dew Point:</i> Class 3 or at least 10°C less than the lowest ambient temperature expected</p> <p>Air Consumption⁽¹⁾</p> <p>4310 <i>At 5.5 bar (80 psig) supply pressure:</i> 0.036 m³/hr (1.27 scfh)</p> <p>Pilot Valve Leakage <i>Maximum at 20°C:</i> 8 ml/min (0.0003 scfm/min) <i>Maximum at -20°C:</i> 800 ml/min (0.028 scfm/min)</p> <p>Air Capacity / Flow Rate <i>Supply Pressure:</i> 1.2 Cv</p> <p>Connections (Optional) <i>Supply, Output Pressure, and Vent:</i> 1/4 NPT</p> <p>Wireless Set Point Command IEC 62591 (<i>WirelessHART</i>) 2.4 GHz DSSS</p> <p>Local User Interface</p> <p>Liquid Crystal Display (LCD) Two pushbuttons for navigation, setup, and calibration</p> <p>Communication Protocol</p> <p>HART 7, IEC 62591 (<i>WirelessHART</i>)</p> <p>Maintenance Port Communication Signal</p> <p>Bell 202 Voltage Signaling: 1200 bps binary phase-continuous Frequency-Shift-Keying (1220 Hz mark, 2400 Hz space) superimposed on voltage level</p> <p>Initial Dynamic Variable Assignments (Default)</p> <table border="1"> <thead> <tr> <th rowspan="2">Dynamic Variable Assignment</th> <th colspan="3">DEVICE STRUCTURE</th> </tr> <tr> <th>Control</th> <th>Snap Control</th> <th>Monitor</th> </tr> </thead> <tbody> <tr> <td>Primary (PV)</td> <td>Switch States</td> <td>Switch States</td> <td>Switch States</td> </tr> <tr> <td>Secondary (SV)</td> <td>Set Point</td> <td>Set Point</td> <td>Switch States</td> </tr> <tr> <td>Tertiary (TV)</td> <td>Cycle Counter</td> <td>Cycle Counter</td> <td>Cycle Counter</td> </tr> <tr> <td>Quaternary (QV)</td> <td>Supply Voltage</td> <td>Supply Voltage</td> <td>Supply Voltage</td> </tr> </tbody> </table> <p>Refer to table 4 for a complete list of Device Variables</p> <p>Wireless Communication Signal</p> <p>2.4 GHz, DSSS, IEC 62591 (<i>WirelessHART</i>) Maximum 10 dBm (10 mW) EIRP at 2.46 GHz</p>	Dynamic Variable Assignment	DEVICE STRUCTURE			Control	Snap Control	Monitor	Primary (PV)	Switch States	Switch States	Switch States	Secondary (SV)	Set Point	Set Point	Switch States	Tertiary (TV)	Cycle Counter	Cycle Counter	Cycle Counter	Quaternary (QV)	Supply Voltage	Supply Voltage	Supply Voltage
Dynamic Variable Assignment	DEVICE STRUCTURE																							
	Control	Snap Control	Monitor																					
Primary (PV)	Switch States	Switch States	Switch States																					
Secondary (SV)	Set Point	Set Point	Switch States																					
Tertiary (TV)	Cycle Counter	Cycle Counter	Cycle Counter																					
Quaternary (QV)	Supply Voltage	Supply Voltage	Supply Voltage																					

-continued-

Table 1. Specifications (continued)

<p>Wireless Classifications</p> <p>Class A digital device, complies with part 15 of the FCC Rules Contains FCC ID: LW2RM2510 Contains IC: 2731A-RM2510</p> <p>Electromagnetic Compatibility</p> <p>Meets EN 61326-1:2013 Immunity—Industrial locations per Table 2 of the EN 61326-1 standard. Performance is shown in table 2 below. Emissions—Class A & B. Performance is shown in table 3 below. ISM equipment rating: Group 1, Class A & B</p> <p>Vibration Testing</p> <p>Meets or exceeds vibration levels specified in ANSI/ISA 75.13.01 1996 (2007): 4 mm peak to peak at 5 Hz, 2 g from 15-150 Hz, and 1 g from 150- 2000 Hz</p> <p>European Directive Information</p> <p>This product complies with the following directives: <i>ATEX Directive (94/9/EC)</i> <i>Electro Magnetic Compatibility (EMC) (2004/108/EC)</i> <i>Radio and Telecommunications Terminal Equipment Directive (R&TTE) (1999/5/EC)</i></p> <p>Refer to Safety Instructions (D103022X012) for the Declaration of Conformity</p> <p>Operating Temperature Limits⁽²⁾⁽³⁾</p> <p>Monitoring <i>Battery Power: -40 to 85°C (-40 to 185°F)</i> <i>External Power: -40 to 80°C (-40 to 176°F)</i> LCD may not be readable below -20°C (-4°F)</p> <p>With Pneumatic Output (On/Off Control): -20 to 50°C (-4 to 122°F)</p> <p>Temperature Sensitivity</p> <p>0.06% change per degree C</p>	<p>Storage Temperature Limits⁽²⁾⁽³⁾</p> <p>-40 to 70°C (-40 to 158°F)</p> <p>Humidity Limits</p> <p>10-95% Non-Condensing Relative Humidity</p> <p>Electrical Classification</p> <p>CSA (C/US)— Intrinsicly Safe ATEX— Intrinsicly Safe IECEx— Intrinsicly Safe</p> <p>Refer to Hazardous Area Classifications and Special Instruction for “Safe Use” and Installations in Hazardous locations, starting on page 15, for additional information</p> <p>Other Classifications/Certifications</p> <p>CUTR—Customs Union Technical Regulations (Russia, Kazakhstan, Belarus, and Armenia) INMETRO—National Institute of Metrology, Quality and Technology (Brazil) NEPSI—National Supervision and Inspection Centre for Explosion Protection and Safety of Instrumentation (China) PESO CCOE—Petroleum and Explosives Safety Organization - Chief Controller of Explosives (India) TIIS—Technology Institution of Industrial Safety (Japan)</p> <p>Contact your Emerson Process Management sales office for classification/certification specific information</p> <p>Electrical Housing</p> <p>Type 4X, IP66 & IP67</p> <p>IEC 61010 Compliance</p> <p>Meets Pollution Degree 4</p> <p>Adjustments</p> <p>Zero and Maximum Span through local interface</p> <p>Altitude Rating</p> <p>Up to 2000 meters (6562 feet)</p> <p>Weight</p> <p>Monitoring— 0.57 kg (1.25 lb) On/Off Control— 1.6 kg (3.4 lb)</p>
---	--

-continued-

Table 1. Specifications (continued)

<p>Power Module⁽³⁾ Standard—Lithium, non-rechargeable</p> <p>Power Module Limits⁽⁴⁾ Standard— 5 years at update rate of 16 seconds or longer with 3 additional devices communicating through it Extended-Life— 10 years at update rate of 8 seconds or longer with 3 additional devices communicating through it. Shelf life— 10 years (radio off)</p> <p>External Power (Optional) 12 - 28 volts DC 100 mA maximum operating current Polarity Insensitive Wire Size—14-20 gauge</p>	<p>Update Rates</p> <p>For position feedback, temperature, and power module voltage—selectable from 1 second to 1 hour; 1s, 2s, 4s, 8s, 16s, 32s, 1 to 60 minutes</p> <p>Note: Sample rate for position feedback is normally the same as the update rate. When using Report by Exception reporting refer to Advanced Wireless Reporting, on page 39, for additional information.</p> <p>Construction Material</p> <p>Housing: A03600 low copper aluminum alloy Elastomers: nitrile, fluorosilicone</p>
---	--

1. Normal m3/hour - Normal cubic meters per hour at 0°C and 1.01325 bar, absolute. Scfh - Standard cubic feet per hour at 60°F and 14.7 psia.
 2. The pressure/temperature limits in this manual and any applicable standard or code limitation for valve should not be exceeded.
 3. Due to the combustible nature of the lithium content, the power module has special installation, operation, storage, and/or shipping requirements. Observe all warnings included with the power module before installing, operating, storing, or shipping. Contact your [Emerson Process Management sales office](#) if additional information is needed.
 4. When operating in temperatures between -10°C (14°F) and -20°C (-4°F) it is recommended that you use the extended power module, as power module life is impacted. The life expectancy of an extended life power module used continually in the -10°C (14°F) and -20°C (-4°F) range is 3 years.

Table 2. EMC Summary Results—Immunity

Port	Phenomenon	Basic Standard	Test Level	Performance Criteria ⁽¹⁾
Enclosure	Electrostatic discharge (ESD)	IEC 61000-4-2	6 kV contact 8 kV air	B
	Radiated EM field	IEC 61000-4-3	80 to 1000 MHz @ 10 V/m with 1 kHz AM at 80% 1400 to 2000 MHz @ 10 V/m with 1 kHz AM at 80% 2000 to 2700 MHz @ 3 V/m with 1 kHz AM at 80%	A
	Rated power frequency magnetic field	IEC 61000-4-8	100 A/m @ 50 Hz & 60 Hz	A
DC Power ⁽²⁾	Burst	IEC 61000-4-4	2 kV (5/50 ns, 5 kHz)	B
	Conducted RF	IEC 61000-4-6	10 Vrms (150 kHz to 80 MHz)	A

Performance criteria: +/- 2% of effect
 1. A = No degradation during testing. B = Temporary degradation during testing, but is self-recovering.
 2. Applicable to External Power option only.

Table 3. EMC Summary Results—Emissions

Port	Frequency Range (MHz)	Basic Standard	Emissions Level	Given Rating
Enclosure	30 to 230	EN 55011	Group 1 Class A: 40 dB (µV/m) measured at 10 m distance Group 1 Class B: 30 dB (µV/m) measured at 10 m distance	Class A & B
Enclosure	230 to 1000	EN 55011	Group 1 Class A: 47 dB (µV/m) measured at 10 m distance Group 1 Class B: 37 dB (µV/m) measured at 10 m distance	Class A & B
	1000 to 3000	EN 55022	Group 1 Class B 50 dB (µV/m) measured at 3 m distance, peak limit not to exceed 70 dB (µV/m)	Class A & B
	3000 to 6000		Group 1 Class B 54 dB (µV/m) measured at 3 m distance, peak limit not to exceed 74 dB (µV/m)	Class A & B

NOTES:
 The 4310 is considered as a Group 1 device.
 Industrial, Scientific, and Medical (ISM) radio frequency (RF) equipment is rated according to its Group and Class as follows:
 Group I - Equipment in which there is intentionally generated and/or used conductively coupled radio-frequency energy which is necessary for the internal functioning of the equipment itself.
 Group II - Equipment in which radio-frequency energy is intentionally generated and/or used in the form of electromagnetic radiation for the treatment of material, and EDM and arc welding equipment.
 Class A - Equipment suitable for use in industrial and commercial environments
 Class B - Equipment suitable for use in domestic environments

Table 4. Device Variables

INDEX	DEVICE VARIABLE		DESCRIPTION	
	DD	Published To Gateway ⁽¹⁾		
1	Closed/Low Limit Switch	CLOSED_TRIGGER	Reports Closed/Low condition	(1 = Tripped, 0 = Not Tripped)
2	Opened/High Limit Switch	OPEN_TRIGGER	Reports Opened/High condition	(1 = Tripped, 0 = Not Tripped)
3	Temperature	DEVICE_TEMPERATURE	Electronics Module Temperature	(Degrees C)
4	Supply Voltage	BATTERY_VOLTAGE	Power Supply Output	(Volts DC)
5	Set Point (on/off control only)	SET_POINT	Set Point	(1 = Closed, 2 = Open)
6	Switch States	SWITCH_STATE	Combines information in variables 1 and 2	(0 = Part Open, 1 = Closed, 2 = Opened, 3 = Unknown, 4 = Mid, 5 = High, 6 = Low)
7	Last Close Stroke Time	CLOSE_STROKE_TIME	Time the on/off controller took to previously close the valve	
8	Last Open Stroke Time	OPEN_STROKE_TIME	Time the on/off controller took to previously open the valve	
9	Timestamp 0	MESSAGE_0_TIMESTAMP	Timestamp of burst message 0	
10	Timestamp 1	MESSAGE_1_TIMESTAMP	Timestamp of burst message 1	
11	Timestamp 2	MESSAGE_2_TIMESTAMP	Timestamp of burst message 2	
12	Opened/High Dwell	OPEN_DWELL_TIME	The time the state has been/previously was in the open state.	
13	Closed/Low Dwell	CLOSED_DWELL_TIME	The time the state has been/previously was in the closed state.	
14	Transition Dwell	PARTIALLY_OPEN_DWELL_TIME	The time the state has been/previously was in the partially open state.	
15	Cycle Counter	CYCLE_COUNTS	Cycle counted by the device	
243	Battery Life Remaining	BATTERY_LIFE	Estimated battery life remaining	(days) - meaningless with External Power option
244	PV % Range	PERCENT_RANGE	0	(%)
245	Loop Current	CURRENT	Always Indeterminate (not a number)	(mA)
INDEX	DISCRETE VARIABLES		DESCRIPTION	
	DD	Published To Gateway		
0	Discrete Switch State	DISCRETE_SWITCH_STATE	Current state of the switch variable	(6 = Closed, 17 = Opening, 18 = Closing, 46 = Opened, 48 = Unknown, 52 = Part-Open, 53 = Mid, 54 = High, 55 = Low)
1	Discrete Set Point (On/Off Control only)	DISCRETE_SET_POINT	Target value for the controlled variable	(4 = Close, 5 = Open, 6 = Closed, 46 = Opened)

1. 1410 gateway version 4.4.28 or later or 1420 gateway version 4.4.15 or later is required.

Installation

⚠ WARNING

Before mounting the 4310:

- Always wear protective clothing, gloves, and eyewear when performing any installation procedures to avoid personal injury or property damage.
 - If installing into an existing application, also refer to the WARNING at the beginning of the Maintenance section in this instruction manual.
 - Check with your process or safety engineer for any additional measures that must be taken to protect against process media.
-

⚠ WARNING

The 4310 power module contains two primary lithium-thionyl chloride batteries. Under normal conditions of use, the battery materials are self-contained and are not reactive as long as the batteries and power module integrity are maintained. Care should be taken to prevent mechanical, electrical, or thermal damage. **DO NOT** recharge, short-circuit, disassemble, heat, or expose the power module to water. The batteries contain flammable materials and performing any of the above actions could cause them to become damaged, ignite, or explode, resulting in personal injury or property damage. Observe all warnings included with the power module before installing, operating, storing, or shipping the 4310.

Personal injury and property damage can result from fire or explosion if the power module is subjected to heat above 100°C (212°F). Power modules should be stored in a cool, dry and ventilated area; for maximum life, storage should not exceed 30°C (86°F).

CAUTION

When installing components, proper means of electrostatic discharge protection is required. Failure to use a grounding strap, or other means of electrostatic discharge protection can result in damage to the electronics.

⚠ WARNING

To avoid static discharge do not rub or clean the antenna with solvents.

The 4310 has two available power sources; a battery-sourced power module, or an external power source.

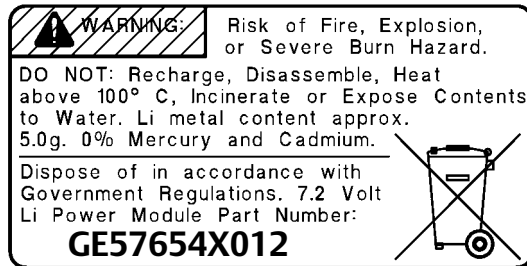
Note

A 4310 powered by a battery-sourced power module cannot be converted to a 4310 powered by an external power source. The housing and electronics are not the same for a 4310 powered by a battery-sourced power module and a 4310 powered by an external power source.

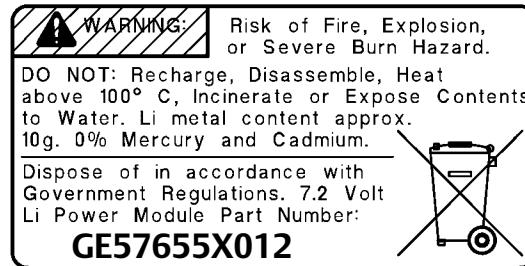
Installing Standard and Extended Life Power Modules

There are two battery-sourced power options, standard life and extended life power modules. Refer to the power module warning labels, shown in figure 4, to determine which power module you have. Refer to figure 5 when installing.

Figure 4. Warning Labels from Power Module



STANDARD LIFE POWER MODULE



EXTENDED LIFE POWER MODULE

Note

Default configuration is for a standard power module. If installing the extended life power module you must change the configuration. Incorrect power module configuration will affect remaining days of life calculations. If using the Field Communicator go to *Configure, Manual Setup, Power Module, Reset Module Data*. In AMS Device Manager go to *Configure, Manual Setup* and select *Reset Power Module Variables* from the Power tab.

To install the power module:

1. Loosen the two instrument screws and open the cover.
2. Align the power module over the four banana plug connectors and insert on the main board.
3. Insert the four self-tapping screws into the corresponding female receptors on the cover/main board assembly and tighten to a torque of 0.282 N•m (2.5 lbf•in) to ensure that the power module is secured properly.
4. If you are replacing the power module see the additional steps to reset the power module remaining life counter, in the *Resetting Power Module Variables* procedure found on page 62.
5. Close the cover and tighten the instrument cover screws to a torque of 5.6 to 6.7 N•m (50 to 60 lbf•in).

Installing Unit Supplied with External Power Option

Refer to figure 6 when installing the wiring.

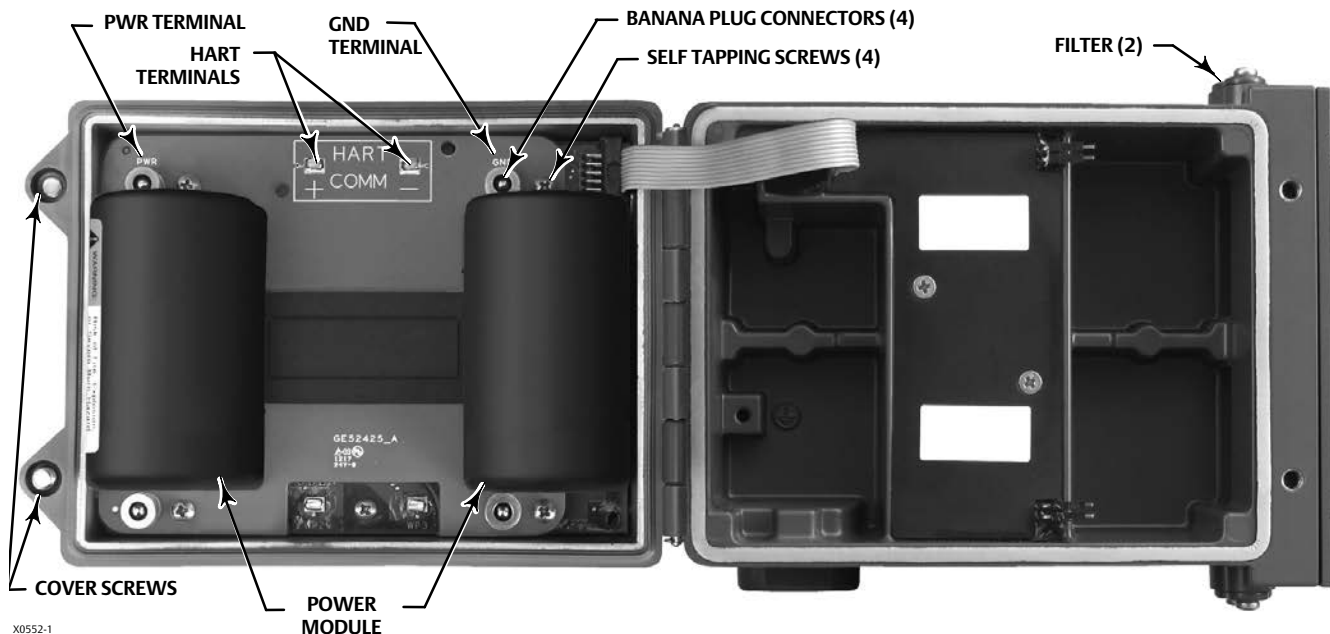
1. Loosen the two instrument screws and open the cover.

▲ WARNING

Select a cable gland that is rated for the environment of use (such as hazardous area, ingress protection and temperature). Failure to use properly rated cable glands can result in personal injury or property damage from fire or explosion.

When installing the cable gland or conduit fitting minimize the amount of wires remaining in the housing cavity so they do not get compressed or damaged when closing the cover in step 7.

Figure 5. TopWorx 4310 with Battery Sourced Power Modules



X0552-1

2. Insert a user-supplied cable gland or conduit fitting into the housing.
3. Insert the wires through the cable gland/conduit fitting.

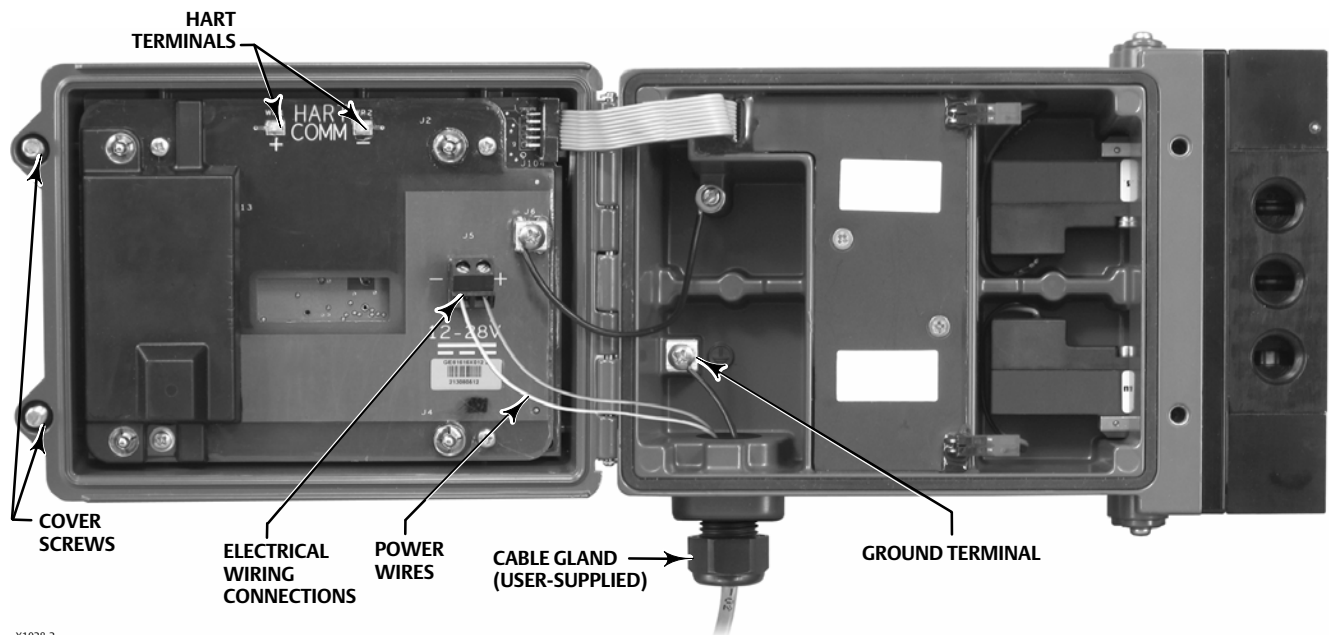
⚠ WARNING

Wiring connected to the External Power terminals should be rated for +100°C (212°F) max.

Failure to use properly rated wiring can result in personal injury or property damage from fire or explosion.

4. Connect the wires to the connections as shown in figure 6. The terminal and electrical connections are polarity-insensitive; i.e., you can connect the positive or negative wire to either terminal screw.
5. As shown in figure 6, a ground terminal is available for connecting a safety ground. Make connections to this terminal following national and local codes and plant standards.
6. Tighten the wiring terminal screws.
7. Close the cover and tighten the instrument cover screws to a torque of 5.6 to 6.7 N • m (50 to 60 lbf • in).

Figure 6. Installing Unit Supplied with External Power Option



X1028-2

Network Setup

The 4310 should have wireless network parameters configured prior to becoming part of a wireless network. All *WirelessHART* devices within a network have two network parameters that are the same; the Network ID and the Join Key.

The 4310 is shipped with a pre-configured Network ID of 1229 and a Join Key which is set to all zeros. Prior to being installed these should be set to match the other devices on the network. These configuration changes can be made using a 475 or 375 Field Communicator, AMS Wireless Configurator, or AMS Device Manager 10.5 and above.

Note

When the Smart Wireless Gateway is configured in an advanced security mode each device is required to have an individual join key.

Using the Field Communicator

1. Verify the Field Communicator has a device description (DD) loaded for the 4310 Device Revision 4 (DD Revision 1 or later).

Note

4310 DD's for the Field Communicator are available for download at:

<http://www2.emersonprocess.com/en-US/brands/fieldcommunicator/475FC/Pages/SysSoftDDs.aspx>

Note that there may be a delay in posting new DD's to this site.

The above link is for the English website. Go to <http://www2.emersonprocess.com/Pages/worldwide.aspx> to access a specific country or regional website.

2. Obtain the Network ID and Join Key from the gateway via web interface. Go to *Setup* and select *Network*. The Network ID will be shown. Select *Yes* to see the Join Key.
 3. Open the cover of the 4310 and attach the Field Communicator leads to the 4310 HART terminals (see figure 5 or 6).
 4. Select *Online, Overview, and Join Device to Network* to enter the network parameter settings (see figure 24 for the Overview menu tree).
 5. Remove the leads from the 4310 and close the cover. Tighten the instrument cover screws to a torque of 5.6 to 6.7 N•m (50 to 60 lbf•in).
 6. Install the 4310 on monitored equipment and/or verify the gateway.
-

Note

1410 gateway version 4.4.28 or later or 1420 gateway version 4.4.15 or later is required.

Using AMS Wireless Configurator or AMS Device Manager (Using a HART Modem)

1. Verify that AMS has a device description (DD) loaded for the 4310 Device Revision 4 (DD Revision 1 or later).
-

Note

4310 DD's for AMS are available for download at:

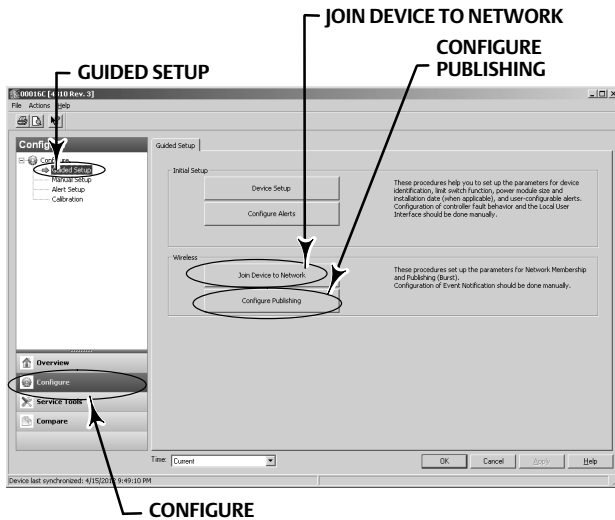
<http://www2.emersonprocess.com/en-US/documentation/deviceinstallkits/Pages/deviceinstallkitsearch.aspx>

Note that there may be a delay in posting new DD's to this site.

The above link is for the English website. Go to <http://www2.emersonprocess.com/Pages/worldwide.aspx> to access a specific country or regional website.

2. Obtain the Network ID and Join Key from the gateway via web interface.
3. Open the cover of the 4310 and attach the HART modem leads to the HART terminals (see figure 5 or 6).
4. In AMS select the device that is connected to the HART modem.
5. Go to *Configure, Guided Setup, Wireless* to configure network membership (see figure 7). Select *Join Device to Network* and enter the network parameter settings.

Figure 7. Wireless Setup



There are three burst messages that can be configured. Each can have its own content, one of 5 trigger modes, and a range of update rates. Burst messages may be set to default values or tailored to your application in Configure Publishing. Refer to Broadcast Information on page 37 for additional information on burst configuration.

6. Remove the leads from the 4310 and close the cover. Tighten the instrument cover screws to a torque of 5.6 to 6.7 N•m (50 to 60 lbf•in).
7. Install the 4310 on monitored equipment and/or verify the gateway.

Note

1410 gateway version 4.4.28 or later or 1420 gateway version 4.4.15 or later is required.

Hazardous Area Classifications and Special Instructions for “Safe Use” and Installations in Hazardous Locations

Certain nameplates may carry more than one approval, and each approval may have unique installation/wiring requirements and/or conditions of “safe use”. These special instructions for “safe use” are in addition to, and may override, the standard installation procedures. Special instructions are listed by approval.

Note

This information supplements the nameplate markings affixed to the product.

Always refer to the nameplate itself to identify the appropriate certification. Contact your [Emerson Process Management sales office](#) for approval/certification information not listed here.

▲ WARNING

Failure to follow these conditions of “safe use” could result in personal injury or property damage from fire or explosion, and area re-classification.

CSA (C/US)

Intrinsically Safe

Monitor Version

Battery Sourced Power Module w/out Pneumatic Output

Ex ia Intrinsically Safe

Class I, Division 1 GP ABCD T3/T4/T5

Ex ia IIC T3/T4/T5

Class I Zone 0 AEx ia IIC T3/T4/T5 Ga

Install per control drawing GE59530 as shown
in figure 8 and 9

Enclosure: Type 4X, IP66 & IP67

T3(Tamb ≤ 85°C), T4(Tamb ≤ 75°C), T5(Tamb ≤ 40°C)

Temperature Range: -40°C to 85°C

External Power w/out Pneumatic Output

Ex ia Intrinsically Safe

Class I, Division 1 GP ABCD T5(Tamb ≤ 80°C)

Ex ia IIC T5 (Tamb ≤ 80°C)

Class I Zone 0 AEx ia IIC T5(Tamb ≤ 80°C) Ga

Install per control drawing GE59530 as shown
in figure 8 and 10

Enclosure: Type 4X, IP66 & IP67

Temperature Range: -40°C to 80°C

Control Version

Battery Sourced Power Module with Pneumatic Output

Ex ia Intrinsically Safe

Class I, Division 1 GP ABCD T4/T5/T6

Ex ia IIC T4/T5/T6

Class I Zone 0 AEx ia IIC T4/T5/T6 Ga

Install per control drawing GE59530 as shown
in figure 8 and 9

Enclosure: Type 4X, IP66 & IP67

T4(Tamb ≤ 50°C), T5(Tamb ≤ 46°C), T6(Tamb ≤ 31°C)

Temperature Range: -20°C to 50°C

External Power with Pneumatic Output

Ex ia Intrinsically Safe

Class I, Division 1 GP ABCD T5

Ex ia IIC T5

Class I Zone 0 AEx ia IIC T5 Ga

Install per control drawing GE59530 as shown
in figure 8 and 10

Enclosure: Type 4X, IP66 & IP67

T5(Tamb ≤ 50°C)

Temperature Range: -20°C to 50°C

ATEX II 1 G IECEX

Intrinsically Safe

Monitor Version

Battery Sourced Power Module w/out Pneumatic Output

Ex ia IIC T3/T4/T5 Ga

Install per control drawing GE59530

as shown in figure 8 and 9

Enclosure: Type 4X, IP66 & IP67

T3(Tamb ≤ 85°C), T4(Tamb ≤ 75°C), T5(Tamb ≤ 40°C)

Temperature Range: -40°C to 85°C

External Power w/out Pneumatic Output

Ex ia IIC T5 Ga

Install per control drawing GE59530

as shown in figure 8 and 10

Enclosure: Type 4X, IP66 & IP67

T5(Tamb ≤ 80°C)

Temperature Range: -40°C to 80°C

Control Version

Battery Sourced Power Module with Pneumatic Output

Ex ia IIC T4/T5/T6 Ga

Install per control drawing GE59530

as shown in figure 8 and 9

Enclosure: Type 4X, IP66 & IP67

T4(Tamb ≤ 50°C), T5(Tamb ≤ 46°C), T6(Tamb ≤ 31°C)

Temperature Range: -20°C to 50°C

External Power with Pneumatic Output

Ex ia IIC T5 Ga

Install per control drawing GE59530

as shown in figure 8 and 10

Enclosure: Type 4X, IP66 & IP67

T5(Tamb ≤ 50°C)

Temperature Range: -20°C to 50°C

ATEX Special Conditions of Use

The apparatus shall not be subjected to mechanical impacts or friction.

The piezo valve can be used with natural gas as control fluid provided that no gas-air mixtures are present in the pressure system.

HART communication terminals (WP1-WP2) must be only connected to certified intrinsic safety equipment and this combination must be compatible regarding intrinsic safety rules.

Battery Sourced Power Module:

The apparatus can only be powered with a module type GE57654X012 or GE57655X012

External Power:

The apparatus may be powered externally via external power module GE61615X012

IECEX Special Conditions of Use

The apparatus shall not be subjected to mechanical impacts or friction.

The piezo valve can be used with natural gas as control fluid provided that no gas-air mixtures are present in the pressure system.

Apparatus connection:

- The HART COMM terminals (WP1-WP2) can be only connected to intrinsically safe certified equipment.
- The external power module (J5) can be only connected to associated intrinsically safe certified equipment.

These combinations must be compatible regarding intrinsic safety rules.

Battery Sourced Power Module:

The apparatus can only be powered with a module type GE57654X012 or GE57655X012

External Power:

The apparatus may be powered externally via external power module GE61615X012

Figure 8. Installation Drawing Notes; See Figure 9 for Battery Module Assembly & Figure 10 for External Power Option

- 1 INSTALLATION MUST BE IN ACCORDANCE WITH THE NATIONAL WIRING PRACTICES OF THE COUNTRY IN USE.
- 2 BARRIERS MUST BE CONNECTED PER MANUFACTURE'S INSTALLATION INSTRUCTIONS.
- 3 INTRINSICALLY SAFE APPARATUS MAY BE CONNECTED TO ASSOCIATED APPARATUS NOT SPECIFICALLY EXAMINED IN SUCH COMBINATION. THE CRITERIA FOR INTERCONNECTION IS THAT THE VOLTAGE (Ui) AND THE CURRENT (Ii) OF THE INTRINSICALLY SAFE APPARATUS MUST BE EQUAL TO OR GREATER THAN THE VOLTAGE (Uo) AND CURRENT (Io) DEFINED BY THE ASSOCIATED APPARATUS. IN ADDITION, THE SUM OF THE MAXIMUM UNPROTECTED CAPACITANCE (Ci) AND INDUCTANCE (Li) OF EACH INTRINSICALLY SAFE APPARATUS, AND THE INTERCONNECTING WIRING, MUST BE LESS THAN THE ALLOWABLE CAPACITANCE (Co) AND INDUCTANCE (Lo) DEFINED BY THE ASSOCIATED APPARATUS. IF THESE CRITERIA ARE MET, THEN THE COMBINATION MAY BE CONNECTED.

FORMULAS

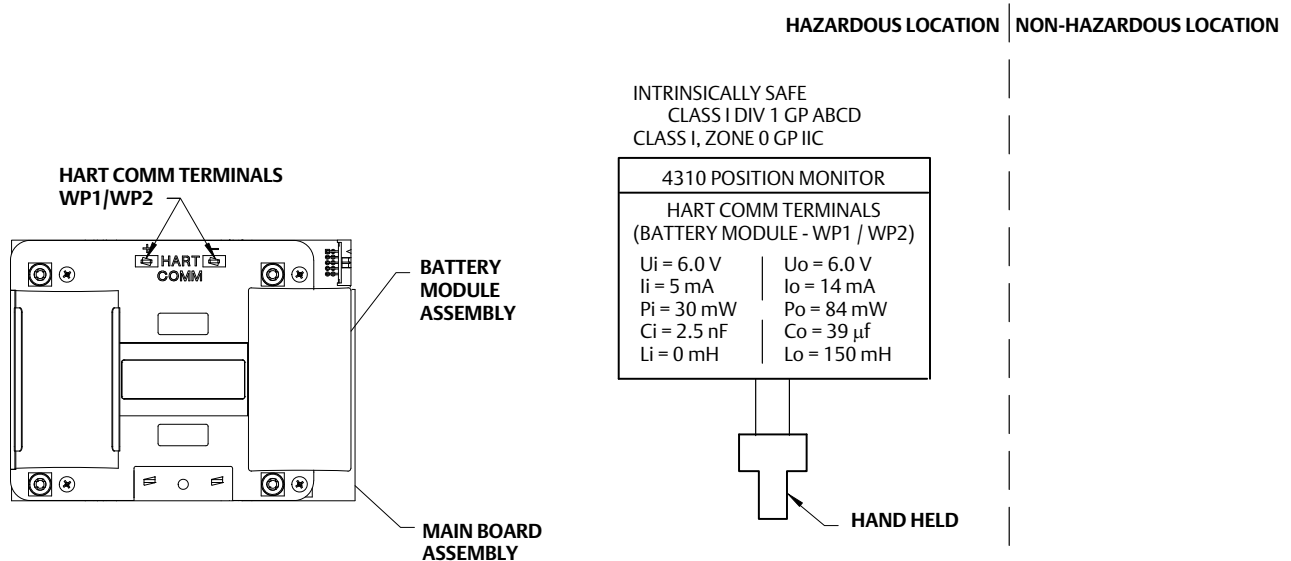
- $U_i > U_o$
- $I_i > I_o$
- $C_i + C_{cable} < C_o$
- $L_i + L_{cable} < L_o$
- $P_i > P_o$

- 4 RESISTANCE BETWEEN BARRIER GROUND AND EARTH GROUND MUST BE LESS THAN ONE OHM.
- 5 IF HAND-HELD COMMUNICATOR OR MULTIPLEXER IS USED, IT MUST BE APPROVED WITH ENTITY PARAMETERS AND INSTALLED PER THE MANUFACTURER'S CONTROL DRAWING.

WARNING
 THE APPARATUS ENCLOSURE CONTAINS ALUMINUM AND IS CONSIDERED TO CONSTITUTE A POTENTIAL RISK OF IGNITION BY IMPACT OR FRICTION. AVOID IMPACT AND FRICTION DURING INSTALLATION AND USE TO PREVENT RISK OF IGNITION.

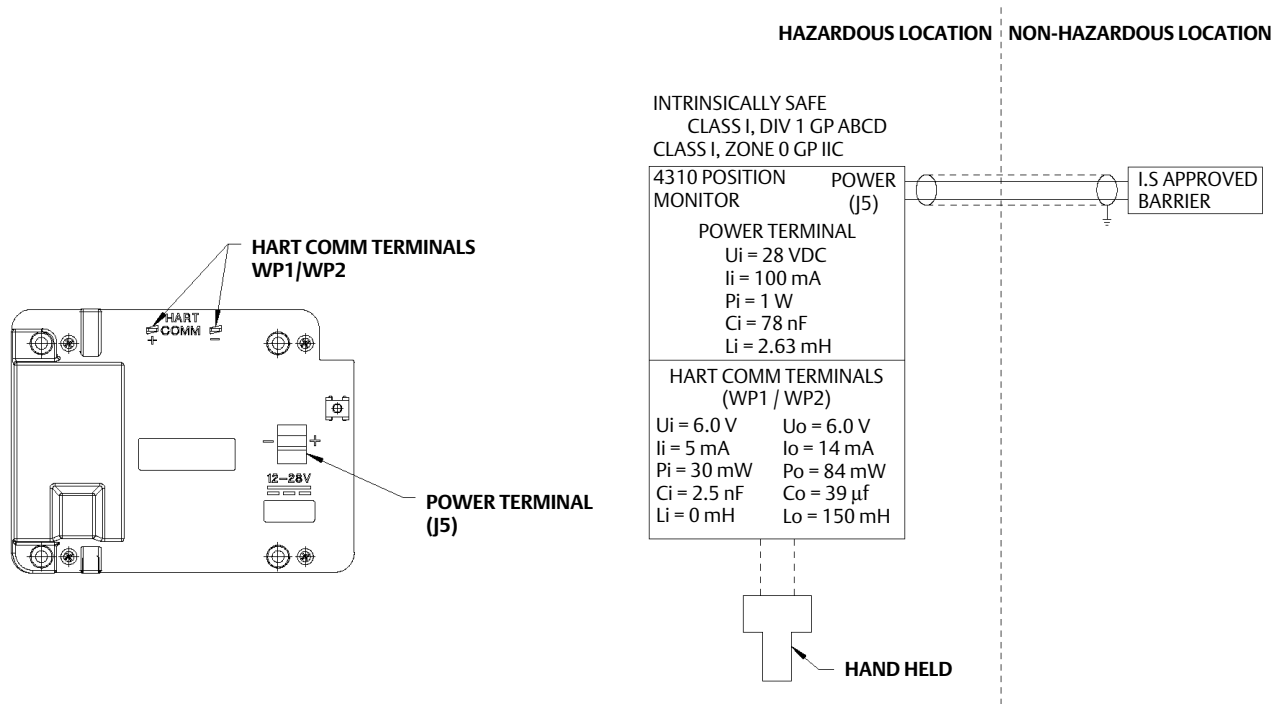
GE59530-8, sheet 1

Figure 9. Installation Drawing for Battery Module Assembly; See Notes in Figure 8



GE59530-8, sheet 1

Figure 10. Installation Drawing for External Power Option; See Notes in Figure 8



GE59530-8, sheet 2

Valve / Actuator Mounting

The following procedures are general guidelines you should consider when mounting the 4310. See the instructions that come with the mounting kit for detailed information on mounting the 4310 to a specific actuator model.

Note

All mounting materials should be non-ferrous. Ferrous materials are magnetic and may affect feedback.

The feedback system for the 4310 utilizes a magnetic field for true linkage-less, non-contacting position measurement. In order to prevent inadvertent stem movement while the instrument is in operation, magnetic tools (such as a magnetic-tipped screwdriver) should not be used.

CAUTION

The magnet material has been specifically chosen to provide a long-term stable magnetic field. However, as with any magnet, care must be taken when handling the magnet assembly. Another high powered magnet placed in close proximity (less than 25 mm) can cause permanent damage. Potential sources of damaging equipment include, but are not limited to: transformers, DC motors, stacking magnet assemblies.

CAUTION

General Guidelines for use of High Power Magnets

Use of high power magnets in close proximity to this instrument should be avoided.

Use of Magnetic Tools

- **Magnetic Tip Screw Drivers** – Magnetic tip screw drivers can be used to work on the 4310. However, they should not be brought in close proximity to the magnet assembly (located at the back of the instrument) during process operations.



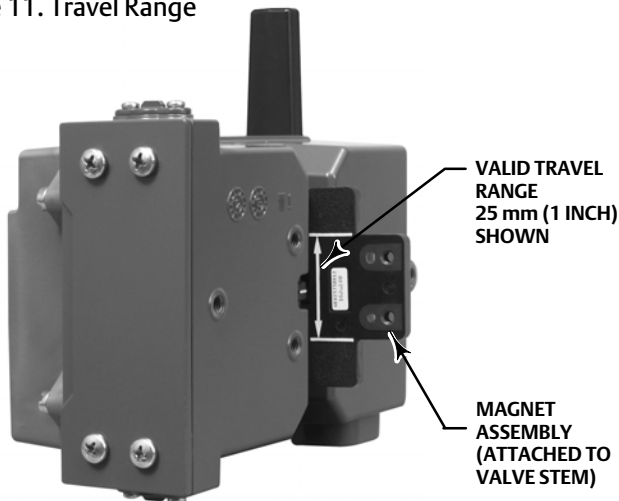
Note

As a general rule, do not use less than 50% of the magnet assembly for full travel measurement. Performance will decrease as the assembly is increasingly subranged.

The linear magnet assemblies have a valid travel range indicated by arrows molded into the piece. This means that the Hall sensor (on the back of the 4310 housing) has to remain within this range throughout the entire valve travel. See figure 11.

The linear magnet assemblies are symmetrical. Either end may be up.

Figure 11. Travel Range



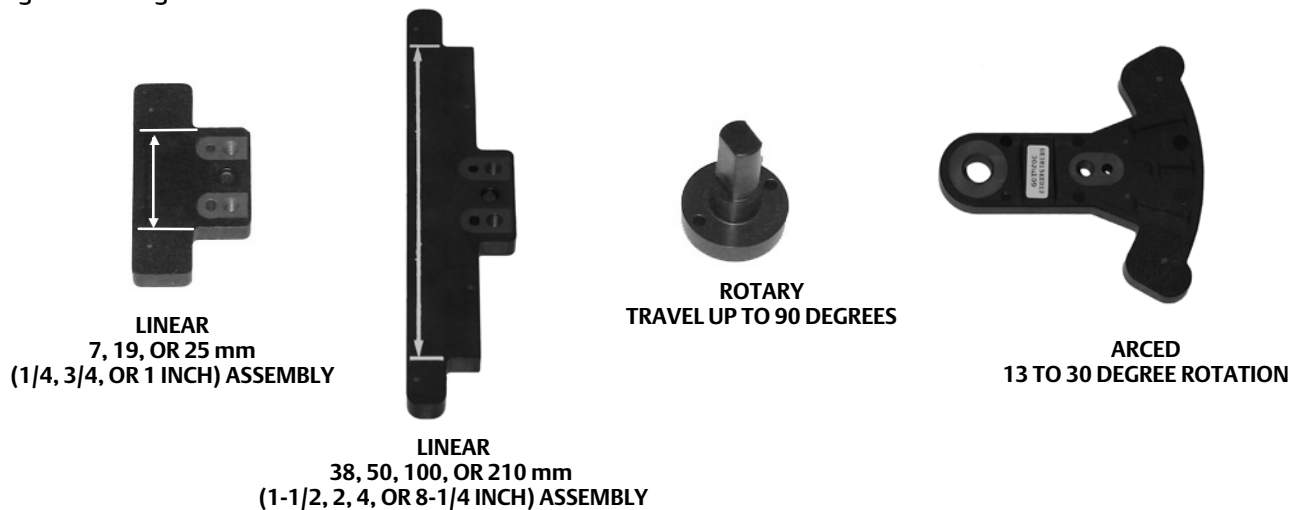
X0543

There are a variety of mounting brackets and kits that are used to mount the 4310 to different actuators. However, despite subtle differences in fasteners, brackets, and connecting linkages, the procedures for mounting can be categorized as follows:

- Linear or sliding-stem actuators with up to 210 mm (8.25 inch) travel
- Rotary actuators with travel up to 90 degrees
- Device-specific applications for rotary actuators requiring 13 to 30 degree rotation

See figure 12 for the different travel feedback magnet assemblies.

Figure 12. Magnet Assemblies



NOTE: VALID TRAVEL RANGE INDICATED BY WHITE ARROWS

Sliding-Stem (Linear) Actuators (e.g. Fisher 667)

Before mounting, verify that linear travel is greater than one-half and not more than the maximum recommended travel of the feedback kit.

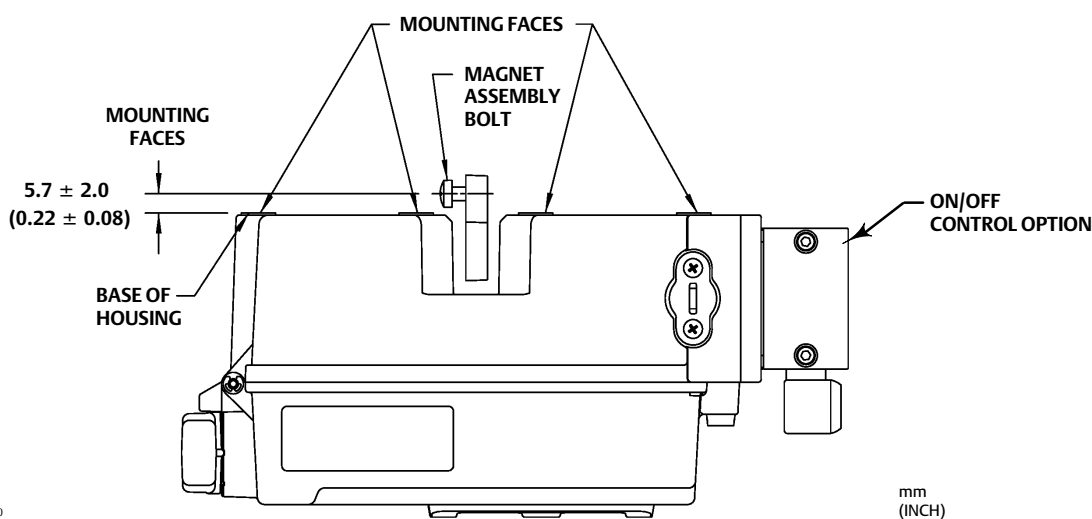
1. Attach the mounting bracket to the actuator.
2. Loosely attach the feedback pieces and magnet assembly to the valve stem connector. Do not tighten the fasteners because fine adjustment is required.

CAUTION

Do not install a magnet assembly that is shorter than the physical travel of the actuator. Loss of control will result from the magnet assembly moving outside the range of the index mark in the feedback slot of the 4310 housing.

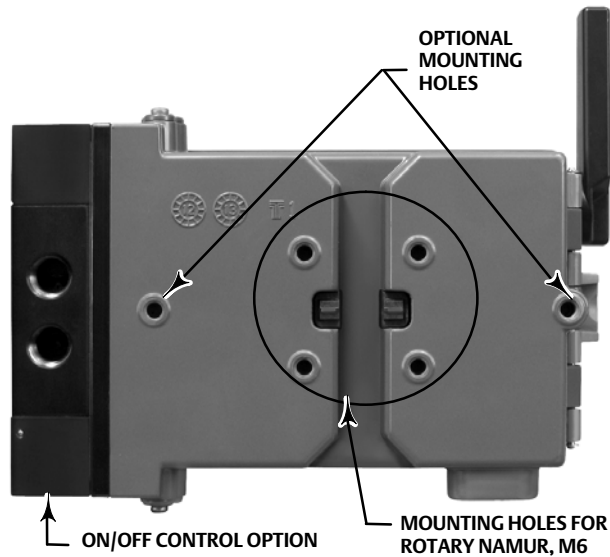
3. Center the magnet assembly inside the retaining slot 5.7 mm (0.22 inch) away from the bottom base of the housing as measured from the center of the assembly bolt holes to the base of the housing (see figure 13).
4. Align the magnet assembly as shown in figure 13.
5. Tighten the fasteners.
6. Mount the 4310 to the mounting bracket, using the mounting bolts. Any of the mounting holes may be used for linear actuators. See figure 14.
7. Once the instrument is mounted perform the local interface calibration procedure, as described on page 31. Verify the magnet assembly position through the entire travel range before putting into service.

Figure 13. Mounting—Sliding-Stem Magnet Assembly



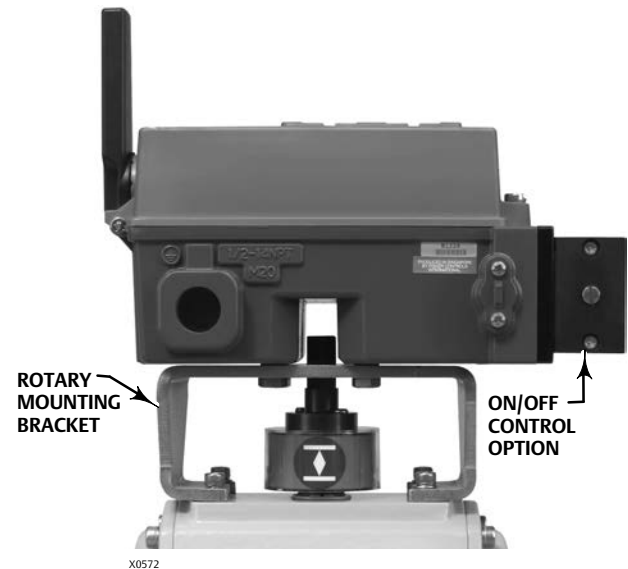
GE59830

Figure 14. Housing and Mounting for Linear and Quarter-Turn Actuators



NOTE: ANY OF THE MOUNTING HOLES
MAY BE USED FOR LINEAR ACTUATORS
X0545

Figure 15. For Rotary-Shaft Actuators (Typical Mounting Bracket)



Guidelines for Mounting on Quarter-Turn (Rotary-Shaft) Actuators

The 4310 can be mounted to any quarter-turn (rotary-shaft) actuator, as well as those that comply with the NAMUR guidelines. A mounting bracket and associated hardware are required. Refer to figure 15.

Before mounting, verify the rotary motion is 45 to 90 degrees of rotation.

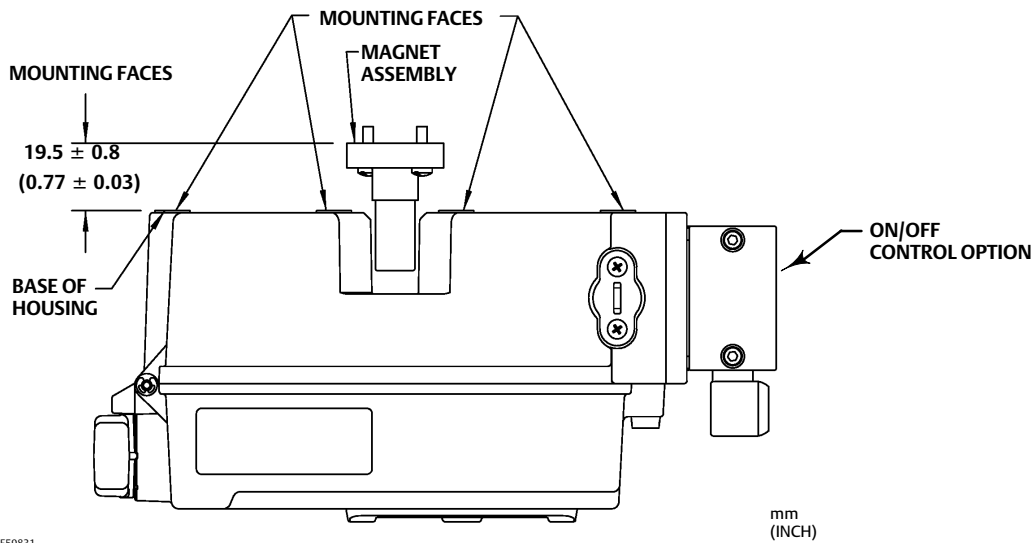
1. Stroke the actuator to one end of its travel.
2. Attach the magnet assembly to the actuator shaft, as shown in figure 16. Position the magnet assembly 19.5 mm (0.77 inch) away from the bottom base of the housing as measured from the base of the assembly to the base of the housing. If the actuator is stroked all the way to the left or counterclockwise, attach the magnet assembly so it points to the antenna (upper left corner of the instrument). If the actuator is stroked all the way to the right or clockwise, attach the magnet assembly so it points to the upper right corner of the instrument. See figure 17.

Note

When the actuator is at its travel limits the magnetic array must always be at a 45 degree angle, regardless of the orientation of the 4310.

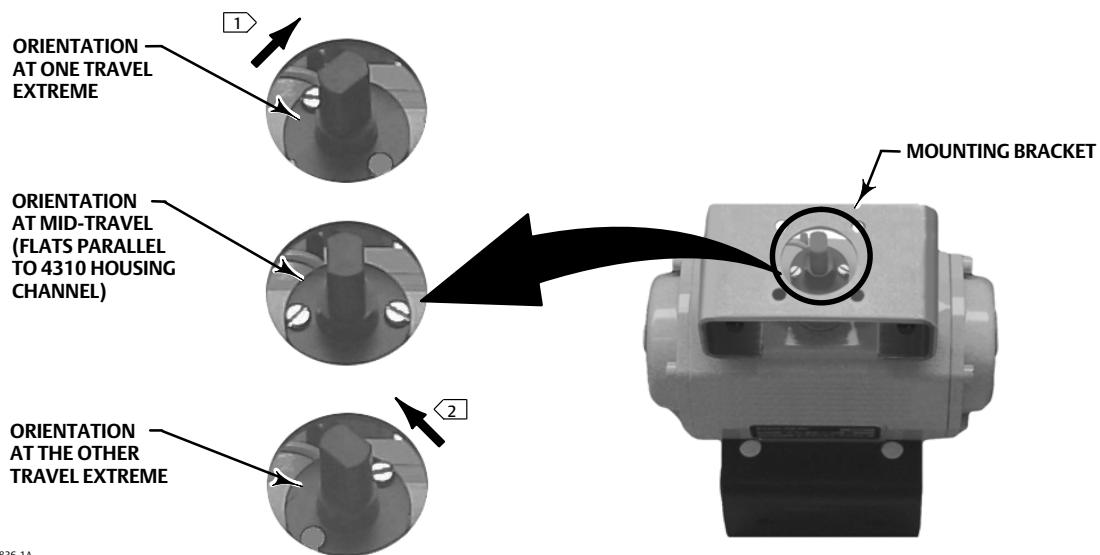
3. Install the mounting bracket on the actuator.
4. Attach the 4310 to the mounting bracket using the 4 mounting bolts, as shown in figure 15.
5. Check for clearance between the magnet assembly and the positioner feedback slot.
6. Stroke the actuator and make sure that the magnet assembly is centered in the slot throughout the entire range of rotation.
7. Once the instrument is mounted perform the local interface calibration procedure, as described on page 31. Verify that the magnet assembly remains centered throughout the entire rotating range.

Figure 16. Mounting—Rotary Magnet Assembly



GE59831

Figure 17. Magnet Assembly Orientation



W8836-1A
W8836-1B

NOTES:

- ① IF THE ACTUATOR IS STROKED ALL THE WAY TO THE RIGHT OR CLOCKWISE, ATTACH THE MAGNET ASSEMBLY SO IT POINTS TO THE UPPER RIGHT CORNER OF THE INSTRUMENT,
- ② IF THE ACTUATOR IS STROKED ALL THE WAY TO THE LEFT OR COUNTERCLOCKWISE, ATTACH THE MAGNET ASSEMBLY SO IT POINTS TO THE ANTENNA (UPPER LEFT CORNER OF THE INSTRUMENT).

Pneumatic Hookup Procedures for On/Off Control Option

⚠ WARNING

To avoid personal injury or property damage resulting from bursting of parts, do not exceed maximum supply pressure.

Personal injury or property damage may result from fire or explosion if natural gas is used as the supply medium and appropriate preventive measures are not taken. Preventive measures may include, but are not limited to, one or more of the following: Remote venting of the unit, re-evaluating the hazardous area classification, ensuring adequate ventilation, and the removal of any ignition sources. For information on remote venting of this controller, refer to page 26.

Severe personal injury or property damage may occur from an uncontrolled process if the instrument supply medium is not clean, dry, oil-free, and noncorrosive. While use and regular maintenance of a filter that removes particles larger than 40 micrometers in diameter will suffice in most applications, check with an Emerson Process Management field office and industry instrument air quality standards for use with corrosive air or if you are unsure about the amount of air filtration or filter maintenance.

⚠ WARNING

When using natural gas as the supply medium the following also applies:

- When disconnecting any of the pneumatic connections or any pressure retaining part, natural gas will seep from the unit and any connected equipment into the surrounding atmosphere. Personal injury or property damage may result if natural gas is used as the supply medium and appropriate preventive measures are not taken. Preventive measures may include, but are not limited to, one or more of the following: ensuring adequate ventilation and the removal of any ignition sources.
- The 4310 does not incorporate explosive fluid and/or process seals. Follow appropriate local, regional, and national codes for installation of these types of products when using natural gas as the supply medium.

Supply pressure medium must be clean, dry, and noncorrosive and meet the requirements of ISA Standard 7.0.01 or ISO 8573-1. A maximum 40 micrometer particle size in the air system is acceptable. Further filtration down to 5 micrometer particle size is recommended. Lubricant content is not to exceed 1 ppm weight (w/w) or volume (v/v) basis. Condensation in the supply medium should be minimized.

Use of a 67CFR filter regulator with standard 5 micrometer filter, or equivalent, to filter and regulate supply air should suffice in most applications. Supply connections are 1/4 NPT.

Prior to connecting the supply air to the spool valve, flush the system to remove any debris or contaminants.

4-Way Spool Valves

The spool valve is a 5 port, 4-way valve driven by an internally mounted pilot. Refer to figure 18 for spool valve supply and work port locations and installation options.

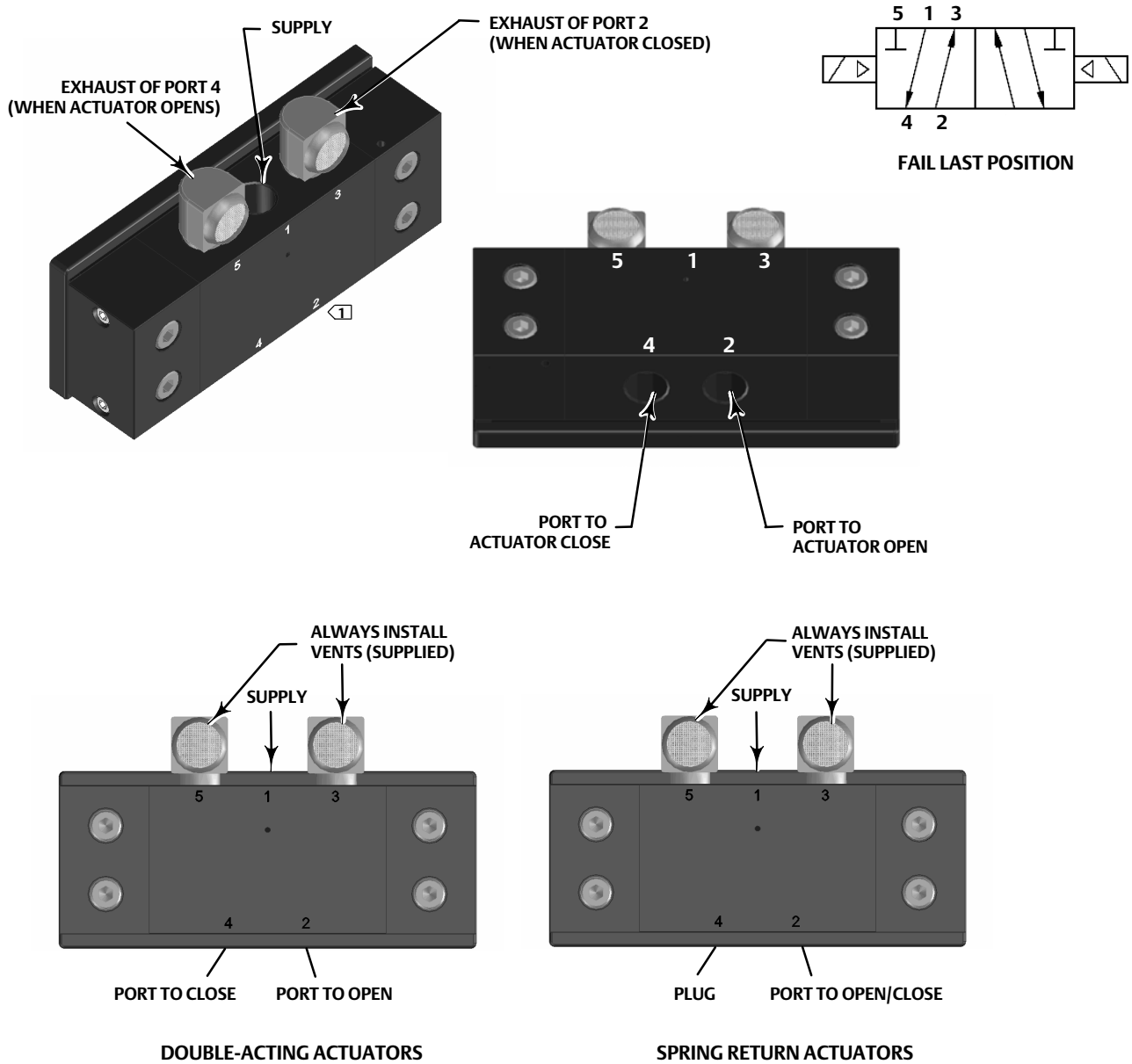
CAUTION

Failure to install the supplied vents in the exhaust ports (ports 3 and 5) can result in damage to the seals.

Never plug, block or restrict port 5 as any blockage or restriction may cause an internal pressure build-up inside the enclosure, resulting in damage to the housing gasket.

Install the supplied vents in the exhaust ports (ports 3 and 5) to prevent debris from falling into the spool valve. Apply a general purpose instant sealant to pipe threads and fittings. A flow control, such as a needle valve, may be used in Port 3, but should never be used in Port 5. To achieve IP67 protection remote venting of ports 3 and 5 is required.

Figure 18. 4-Way Spool Valve Installation



NOTE:
 [1] THE DD POINTS TO THE PILOT VALVE PORTS AND NOT SPECIFICALLY TO THE SPOOL VALVE PORTS.

Vent

⚠ WARNING

Personal injury or property damage can occur from cover failure due to overpressure. Ensure that the housing vent opening is open and free of debris to prevent pressure buildup under the cover.

⚠ WARNING

This unit vents the supply medium into the surrounding atmosphere. When installing this unit in a non-hazardous (non-classified) location in a confined area, with natural gas as the supply medium, you must remotely vent this unit to a safe location. Failure to do so could result in personal injury or property damage from fire or explosion, and area re-classification.

When installing this unit in a hazardous (classified) location remote venting of the unit may be required, depending upon the area classification, and as specified by the requirements of local, regional, and federal codes, rules and regulations. Failure to do so when necessary could result in personal injury or property damage from fire or explosion, and area re-classification.

Vent line piping should comply with local and regional codes and should be as short as possible with a minimum inside diameter of 12.7 mm (1/2-inch) and few bends to reduce case pressure buildup.

To remotely vent the exhaust or to achieve IP67 protection, connect tubing and 1/4 NPT fittings to spool valve ports 3 and 5. Connect tubing and 1/2NPT fitting to case vent port.

Communication Connections

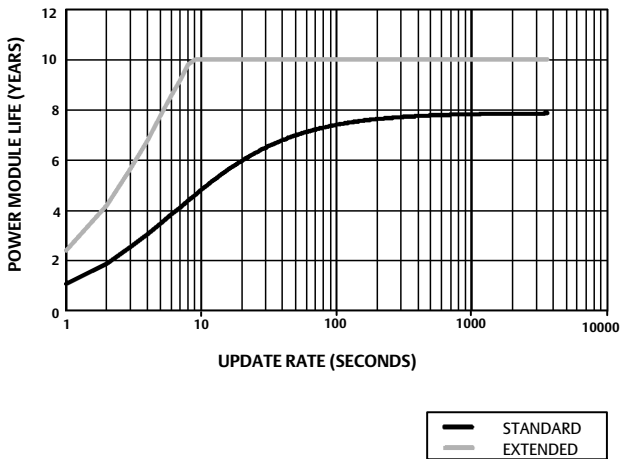
Convenient termination points are located inside the front cover, as shown in figure 5. The polarity-insensitive connection pins provide access to the Maintenance Port defined in the *WirelessHART* specifications.

Wireless Communications

Devices in a *WirelessHART* network are time synchronized and send their data to the gateway at selectable update rates. The update rates of the device have an effect on the number of devices that the gateway can service. For example, if each device sent an update once per minute the gateway could support 100 devices.

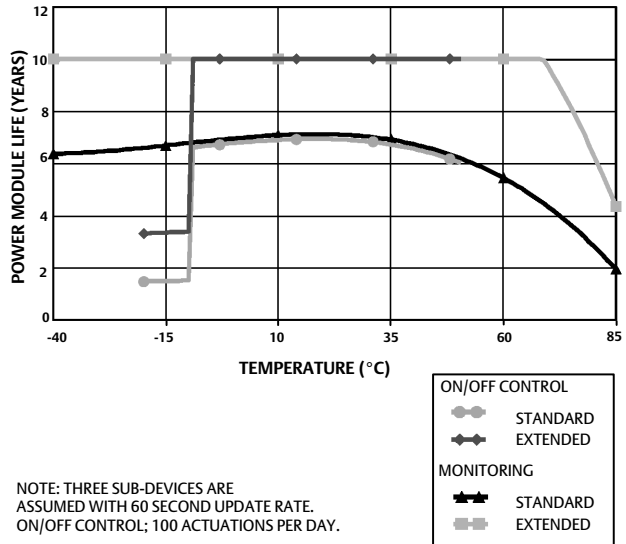
Battery powered devices conserve energy by only sensing and transmitting data at the selectable update rate. The faster the update rate the shorter the life span of a power module. Figures 19, 20, 21, and 22 show the correlation between power module life and update/sample rate, the number of sub-devices, temperature, and actuations, respectively.

Figure 19. Update Rate Impact on Power Module Life; On/Off Control and Monitoring



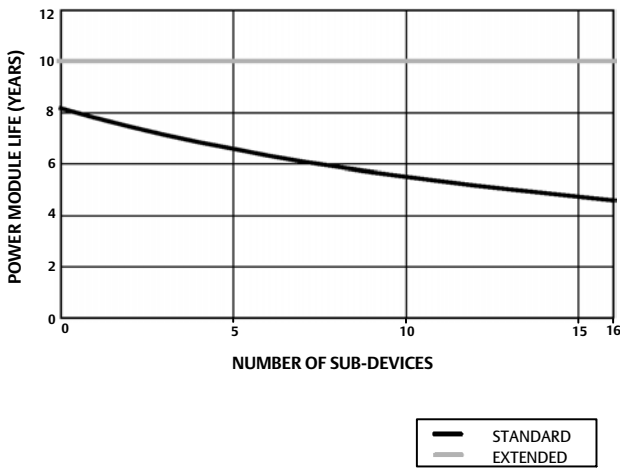
NOTE: THREE SUB-DEVICES ARE ASSUMED, CONSTANT TEMPERATURE OF 22°C (72°F).

Figure 21. Temperature Effects on Power Module Life; On/Off Control and Monitoring



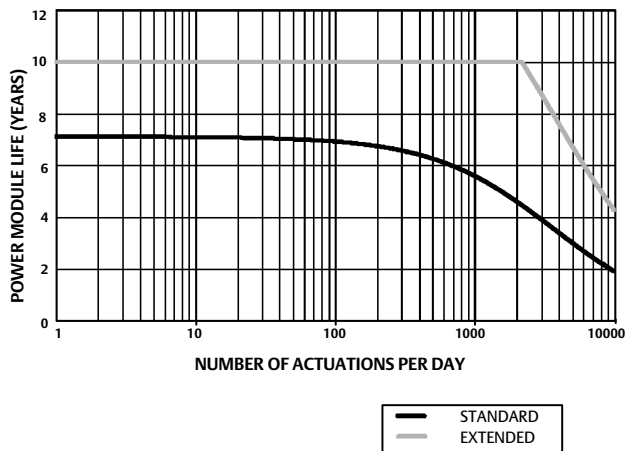
NOTE: THREE SUB-DEVICES ARE ASSUMED WITH 60 SECOND UPDATE RATE. ON/OFF CONTROL; 100 ACTUATIONS PER DAY.

Figure 20. Number of Sub-Devices Impact on Power Module Life; Monitoring



NOTE: 60 SECOND UPDATE RATE, CONSTANT TEMPERATURE OF 22°C (72°F).

Figure 22. Effect of Actuations on Power Module Life; On/Off Control



NOTE: THREE SUB-DEVICES ARE ASSUMED, 60 SECOND UPDATE RATE, CONSTANT TEMPERATURE OF 22°C (72°F).

Continuous updates is the default communication method for the selected device variable; the device sends the data to the gateway at every update period, whether the data has changed or not. However, the 4310 can also be configured to allow position feedback sampling at faster than the default update rate and to send data only when the measured variable has changed. This is useful in certain applications; for example, when used with relief valve

monitoring. When using the standard and extended life battery sourced power modules, sample rates can be set to as fast as 0.5 second sampling. When using the external power option, the sampling rate is set to approximately 20 times per second.

Note

Faster than publish rate sampling can only be configured when at least one of the three burst messages is being triggered.

Refer to Advanced Wireless Reporting (Report By Exception and Delayed Trigger Reporting) on page 39 for additional information on faster sampling.

Consult the Emerson Smart Wireless Gateway information for details on network size, available at <http://www2.emersonprocess.com/en-US/brands/rosemount/Wireless/Wireless-Gateways/Pages/index.aspx>

Basic Setup

Using the Local User Interface

CAUTION

When accessing the pushbuttons or terminals proper means of electrostatic discharge protection is required. Failure to provide appropriate protection can cause the device to malfunction.

The primary function of the local user interface is for calibration. However, information for checking the status of the device, as well as the connected equipment or valve, is also available through the local user interface.

Note

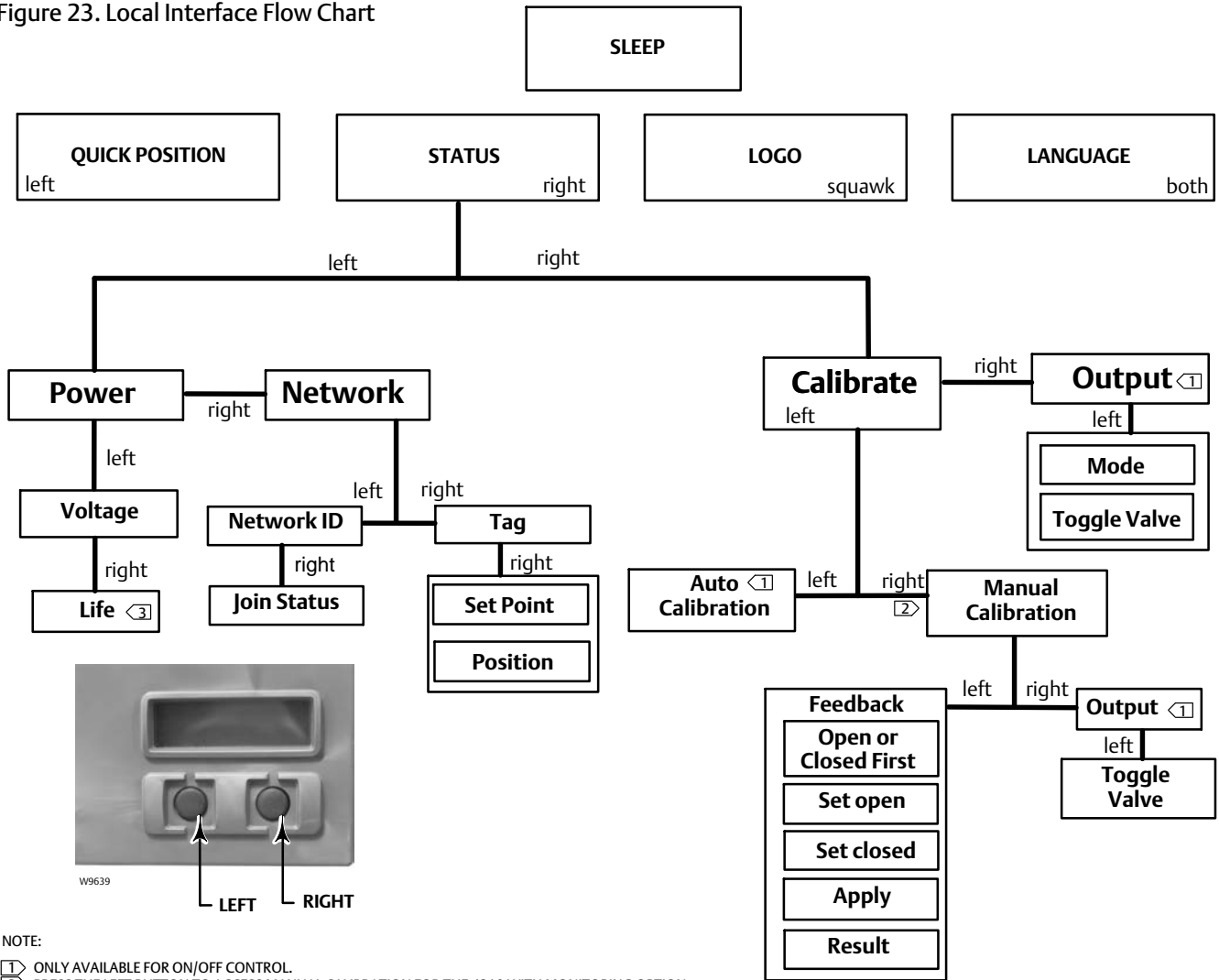
The valve must move from open to closed, or vice versa, in order for the 4310 to be calibrated. Attempting to calibrate the device without moving the valve will result in the action being discarded. The operation of the device will be unchanged.

The calibration function of the local user interface can be locked out from the HART master for security purposes.

The two buttons on the LCD display (see figure 23) are used to activate the display when the LCD is in the sleep state (blank or off). The buttons can be pressed alone or simultaneously. The Emerson logo will display when the LCD is activated from a HART “squawk” command. Refer to Locate on page 57 for additional information.

When navigating the interface the left button is generally used to “SELECT” or take an action, the right button is used to go to the “NEXT” option. Refer to figure 23 for the local interface flow chart.

Figure 23. Local Interface Flow Chart



Identifying Firmware Revision

To identify the firmware revision when the device is in the sleep state, press the right button.

Language Selection

Pressing both buttons activates the language selection menu. Press the right button “NEXT” to scroll to the desired language, then press the left button to “SELECT” the language.

Quick Position

Pressing the left button only when the screen is in the sleep state activates the QUICK POSITION display. The position of the valve (OPEN, PARTIALLY OPEN, and CLOSED) is shown. The display will turn off automatically after 4 seconds.

Status

Pressing the right button only activates the STATUS menu. The STATUS menu contains information about the device, including the status of the power module, network operating parameters, including Set Point for on/off control, and the state of the network interface. It also allows device calibration.

Power

The power status menu is entered from the STATUS menu by pressing SELECT. Press SELECT to see the voltage of the power module. Press NEXT to display the estimated remaining life of the power module.

Note

The remaining life value of the power module is an estimate. The life span of the power module is affected by many operating conditions, including: Power module type. The update or burst rate of the 4310. The number of devices operating through this device to the gateway and their update or burst rates. Network changes causing more or less traffic through the device; for example, a failure in another wireless device in the mesh network, resulting in re-routing, forcing more traffic through the device. Temperature extremes (both high and low) will also affect the life span of the power module.

The *Life* menu is not available when the External Power option is installed.

From the power module life display, press NEXT to go back to the Power menu. Press NEXT to enter the Network menu.

Network

Access the Network screen by pressing the right button (STATUS), the left button (SELECT), and then the right button (NEXT) again.

Press SELECT to display the NETWORK ID configured in the device. Press NEXT to show the current network operational state:

SEARCHING—the device is waiting to detect the presence of a wireless network with the same Network ID and join key.

NEGOTIATING—the presence of a wireless network with the same network parameters has been detected and the device is attempting to join the network.

CONNECTED—the device has detected the presence of a wireless network with the same network parameters and has successfully joined the network.

OPERATIONAL—the device is operating within a wireless network.

DISCONNECTED—the device has become disconnected from the wireless network.

IDLE—the device has been instructed by a HART command not to attempt to participate in a wireless network.

Press NEXT to return to the Network menu.

Press the NEXT in the Network menu to see the TAG of the device. Press NEXT to view the Set Point for devices with the on/off control option. Press the right button to view the current position of the valve or monitored equipment.

Press the right button to return to the STATUS menu.

Press NEXT while in the STATUS menu to access the CALIBRATE menu.

Calibrate

To access the Calibration menu with on/off control press the right button to access the STATUS menu, then the left button (NEXT), then the right button (SELECT). Press the right button from the STATUS menu to access the Calibration menu when using the monitoring option.

▲ WARNING

During calibration the valve will move full stroke. To avoid personal injury and property damage caused by the release of pressure or process fluid, isolate the valve from the process and equalize pressure on both sides of the valve or bleed off the process fluid.

Note

You cannot change the valve set point (i.e. open to closed) when the instrument is in snap-acting mode. This is because the position signal from the monitored equipment is used to change the state of a different valve. Refer to figure 3 on page 3. Manual calibration of the output is required when in snap-acting mode.

Auto Calibration (On/Off Control)

Press the left button to access AUTO calibration. This is used with On/Off Control to calibrate the pneumatic output. Press the right button (OK) when prompted to move the valve. This will set the pneumatic output. The next display instructs you to select the current state; push the left button to select open and the right button to select closed. When prompted press NEXT to return to the CALIBRATE menu.

Note

If it takes longer than 5 minutes to move the valve in each direction during Auto Calibration, Manual Calibration will need to be performed. A normal auto calibration moves from Open > Closed > Open > Closed, and may take up to 20 minutes.

Manual Calibration

Press the right button to access MANUAL calibration with on/off control. Press the left button to access MANUAL calibration with monitoring option.

Feedback— For on/off control press the left button for FEEDBACK calibration. For monitoring press SELECT.

This will allow you to select the first calibration point to be used, either open or closed. Push the left button to select open and the right button to select closed. For monitoring only, the next display instructs you to set the valve or monitored piece of equipment in either the open or closed location, depending on the first calibration point chosen. Once set in position, use the left button to toggle the recording position to MARKED. MARKED indicates that the location has been recorded; UNMARKED indicates that position has not been recorded. After the first position has been MARKED press NEXT to select the second calibration point (it will be the opposite of the first calibration point). Use the left button to toggle the recording position to MARKED. Press NEXT to enter the APPLY menu. Select YES to apply the changes. When prompted press NEXT to return to the CALIBRATE menu.

Note

During the manual calibration procedure, the valve is moved to one position and MARKED. The valve is then moved to other end of travel or rotation and the second position is recorded (MARKED). Earlier calibration points can be used or discarded.

Applying calibration points without changing the valve position will result in the calibration attempt being unused or discarded.

Output (On/Off Control)

Press the right button to access OUTPUT calibration. Press the left button (OK) when prompted to move the valve. This will set the pneumatic output action to the valve movement direction. The next display instructs you to select the current state; push the left button to select open and the right button to select closed. When prompted press NEXT to return to the CALIBRATE menu.

When calibration is complete, the calibration status will be displayed:

SUCCESS—indicates that the calibration procedure was successful.

SPAN HI—indicates that a problem with the high end of travel or rotation was observed. Check the mounting and magnet assembly placement and re-attempt calibration.

SPAN LO—indicates that a problem with the low end of travel or rotation was observed. Check the mounting and magnet assembly placement and re-attempt calibration.

ERROR SPAN— indicates that the distance between the two marked endpoints was too small to provide a reliable calibration. See table 5 on page 60 for troubleshooting help.

- Check the mounting and magnet assembly placement and re-attempt calibration.
- When using the rotary magnet assembly ensure that the magnet does not go perpendicular to the positioner feedback slot.

FAILED— indicates that Auto Calibration failed, most likely because the valve failed to move or did not settle in time; settle time for each position is 5 minutes.

Press the right button to exit the calibration attempt, the display will show UNCHANGED.

Press NEXT to return to the CALIBRATE menu.

From the CALIBRATE display press NEXT to enter the OUTPUT menu (on/off control only), or to display the EXIT menu.

Output (On/Off Control)

Access the Output menu by pressing the right button to access the STATUS menu, the left button (NEXT), and then NEXT again.

In the OUTPUT menu you can view/change the device mode. Press SELECT to view the current device mode. Press the left button to toggle the mode from OUT OF SERVICE to IN SERVICE or vice versa. Select NEXT when done. The next display asks if you would like to toggle the valve. Push the left button (YES) to toggle the valve, press the right button (NO) to return to the OUTPUT menu. Press SELECT to exit the local user interface. Press NEXT to return to the STATUS menu.

Note

The valve set point can be toggled from the LUI only when the device is Out of Service.

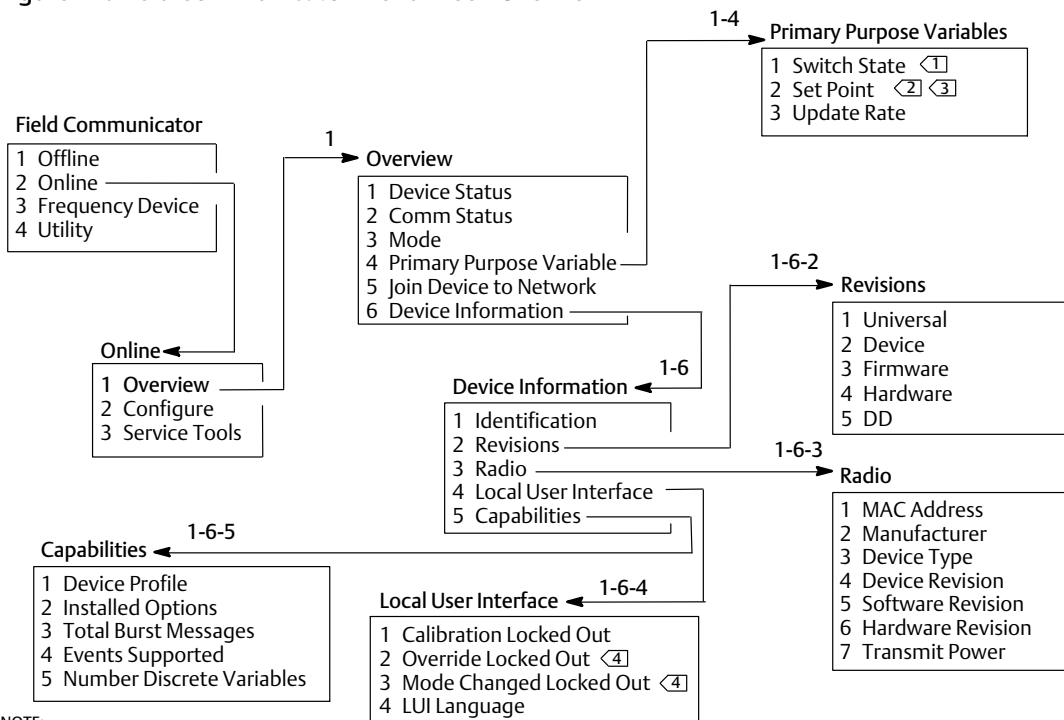
The LUI may have a Clear Latch screen if the latch is enabled and active in the device.

Using the Field Communicator

Overview

Refer to figure 24 for the Overview menu tree.

Figure 24. Field Communicator Menu Tree—Overview



NOTE:

- ① ITEM LABEL IS LATCHING SWITCH (INSTEAD OF SWITCH STATE) WHEN OPERATING MODE IS LATCHING (MONITORING OR SNAP-ACTING MODE ONLY).
- ② SET POINT IS NOT VISIBLE WITH MONITORING OPTION.
- ③ ITEM LABEL IS SNAP COMMAND (INSTEAD OF SET POINT) FOR SNAP-ACTING MODE.
- ④ OVERRIDE LOCKED OUT AND MODE CHANGED LOCKED OUT ARE NOT VISIBLE WITH MONITORING OPTION.

Device Status shows device status. If the status is other than Good, the menu item may be expanded to display a list of active alerts, together with their PlantWeb Alert categories, description, recommended actions, and (where applicable) helpful troubleshooting procedures, images, or variable values.

Comm Status shows communications status; Limited Bandwidth, Connected, Joining, or Not Connected.

Open to view additional communications status information. If Status is *Connected*, *Wireless Mode* and *Disconnect* are displayed. When Comm Status is other than 'Connected', the menu items *Join Mode* and *Advanced* are added between items *Wireless Mode* and *Disconnect*. When *Comm Status* is 'Not Connected', the menu item *Disconnect* is replaced by *Rejoin Network*. Refer to the Service Tools > Communications > Network (3-3-1) menu, discussed on page 49, for additional information.

Mode shows the device control mode; In Service, Not in Service, or In Fault State. Open to change the mode or troubleshoot a Fault State.

Primary Purpose Variables

Switch State / Latching Switch—indicates the current state of the switch variable, based on calibrated sensor position and configuration of thresholds, deadband, and latch. Possible states are Open, Closed, Part-Open, Low, Mid, or High.

Set Point / Snap Command—indicates the target value for the controlled variable. Values are Open, Close, or Opened, Closed.

Select *Switch State / Latching Switch* or *Set Point / Snap Command* to view the value, latching mode (when applicable), and overall process data quality of the item. Values are Good, Degraded, Bad, or Manual/Fixed. A simulated flag indicates the variable is being simulated by a user command.

Update Rate—indicates the effective update rate for each of the variables displayed in the Primary Purpose Variables menu.

Join Device to Network allows you to enter the Network ID (up to 5-digits) and the Join Key (4 sets of 8 hexadecimal digits). The Join Key is used for encrypting the data on the wireless network. The Network ID and the Join Key are the same for all devices connected to a gateway.

Note

The Network ID is shipped with a default value of 1229 and the Join Key with a default value of all zeros. These must be changed prior to use.

When the gateway is configured in an advanced security mode each device is required to have an individual join key.

Device Information

Identification—general device and functional assignment information, including instrument manufacturer, device tags, model, unique ID, description, message, polling address, serial numbers, and commissioning date.

Revisions—device revision information, including *Universal*, *Device*, *Firmware*, *Hardware*, and *DD*.

Radio—radio information, including *MAC Address*, *Manufacturer*, *Device Type*, *Device Revision*, *Software Revision*, *Hardware Revision*, and *Transmit Power*.

Local User Interface—allows you to edit or view *Calibration Locked Out*, *Override Locked Out*, and *Mode Change Locked Out*, and *LUI Language* (view only).

Note

Override Locked Out and *Mode Changed Locked Out* are not visible with the monitoring option.

Capabilities—allows you to view technical information about the device, including *Device Profile*, which identifies the type of commands that are supported by the device, *Installed Options*, *Total Burst Messages*, *Events Supported*, and the *Number of Discrete Variables*.

Configure

Refer to figure 25 for the Configure menu tree.

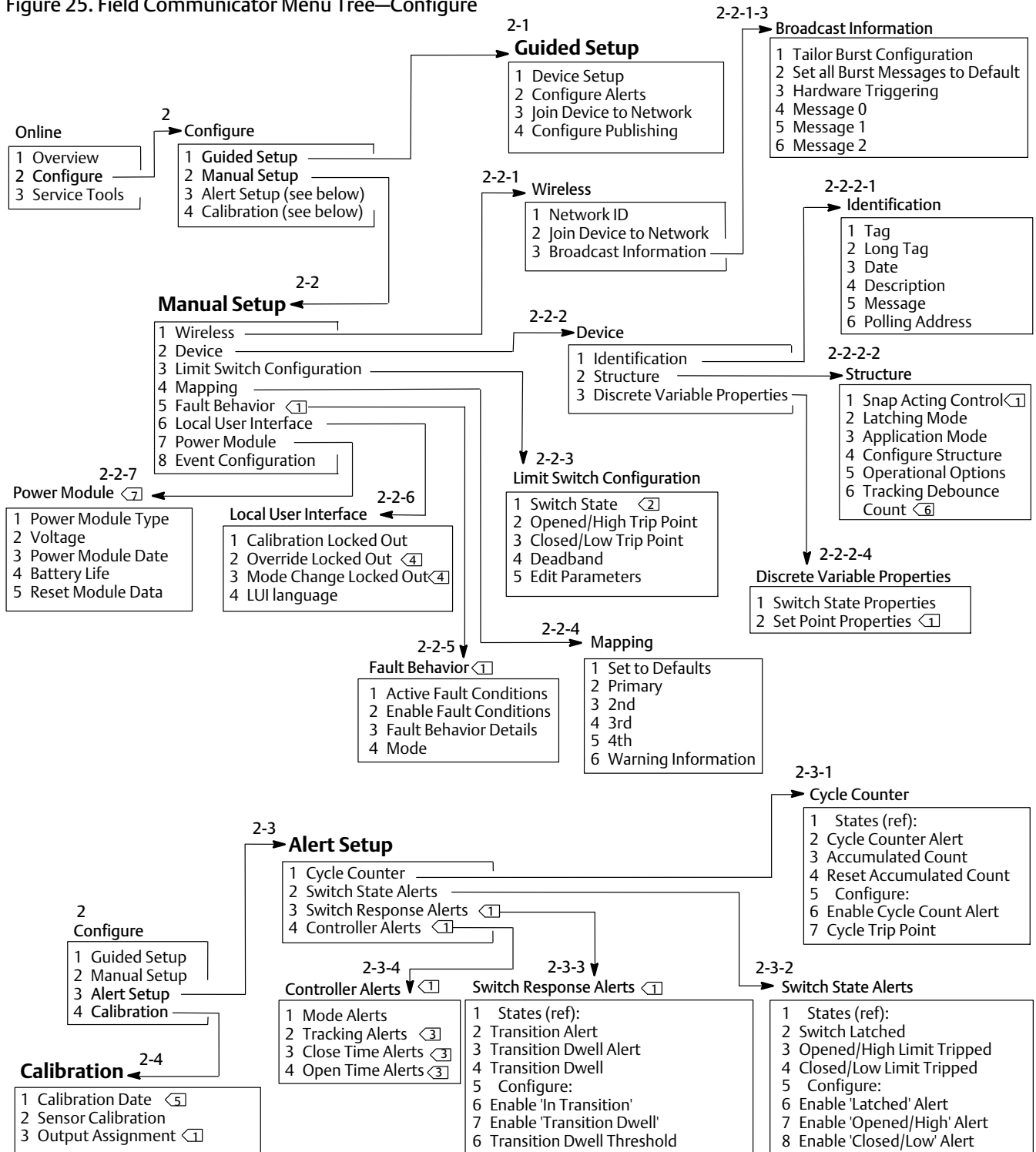
Device configuration activities involve access to and the modification of information in the instrument that is not published by the device, and therefore not cached in the gateway. When configuration is performed by using a host that talks to the device via the proxy (gateway), additional traffic is generated over the wireless network.

The Field Communicator or other portable host may be connected directly to the wired maintenance communication port. All communications for configuration are then handled directly via the device's internal HART modem, bypassing the device radio and the wireless network.

Guided Setup

Follow the prompts on the Field Communicator to view or edit *Device Setup*, *Configure Alerts*, *Join Device to Network*, and *Configure Publishing*.

Figure 25. Field Communicator Menu Tree—Configure



NOTES:

- 1 ON/OFF CONTROL ONLY.
- 2 ITEM LABEL IS LATCHING SWITCH (INSTEAD OF SWITCH STATE) WHEN OPERATING MODE IS LATCHING (MONITORING OR SNAP-ACTING MODE ONLY).
- 3 NOT AVAILABLE IN SNAP-ACTING MODE.
- 4 OVERRIDE LOCKED OUT AND MODE CHANGED LOCKED OUT ARE NOT VISIBLE WITH MONITORING OPTION.
- 5 WHEN ACTIVE THE 'NOT CALIBRATED ALERT' REPLACES CALIBRATION DATE.
- 6 MONITOR ONLY.
- 7 THE POWER MODULE MENU DOES NOT APPEAR WHEN THE EXTERNAL POWER OPTION IS INSTALLED.

Manual Setup

Follow the prompts on the Field Communicator to view or edit *Wireless*, *Device*, *Limit Switch Configuration*, *Mapping*, *Fault Behavior*, *Local User Interface*, *Power Module*, and *Event Configuration*.

- **Wireless**

Network ID (dec)—displays the current Network ID setting.

Join Device to Network—enter the Network ID (up to 5-digits) and the Join Key (4 sets of 8 hexadecimal digits). The Join Key is used for encrypting the data on the wireless network. The Network ID and the Join Key are the same for all devices connected to a gateway.

Note

The Network ID is shipped with a default value of 1229 and the Join Key with a default value of all zeros. These must be changed prior to use.

When the gateway is configured in an advanced security mode each device is required to have an individual join key.

- **Broadcast Information**

Tailor Burst Configuration—automatically selects an appropriate burst configuration for your application based on your input.

Note

Configure the Device Structure (Configure > Manual Setup > Device > Structure) prior to running Tailor Burst Configuration for best burst configuration results.

Set all Burst Messages to Default—select *Set all Burst Messages to Default* to automatically configure all burst messages to default values, as shown below. The Dynamic Variable defaults to a setting that is consistent with the published variables. This is recommended for initial configuration, and to recover from a bad configuration.

On/Off Control

- Message 0:** Selected Device Variables - On, Windowed, 8 second triggered update, 1 minute default
- Message 1:** Additional Device Status - On, On-Change, 1 minute triggered update, 1 hour default, Delayed Triggering
- Message 2:** Discrete Variables - On, On-Change, 8 second triggered update, 1 minute default
- Sensor Sample Rate:** 8 seconds for a battery powered device. (50 milliseconds for external power)

Snap-Acting Control

Message 0:	Selected Device Variables	- On, Windowed, 16 second triggered update, 1 minute default
Message 1:	Additional Device Status	- On, On-Change, 1 minute triggered update, 1 hour default, Delayed Triggering
Message 2:	Discrete Variables	- On, On-Change, 1 minute triggered update, 10 minute default
Sensor Sample Rate:	1 second for a battery powered device. (50 milliseconds for external power)	

Monitor Only

Message 0:	Selected Device Variables	- On, Windowed, 4 second triggered update, 1 minute default
Message 1:	Additional Device Status	- On, On-Change, 1 minute triggered update, 1 hour default, Delayed Triggering
Message 2:	Discrete Variables	- On, On-Change, 1 minute triggered update, 10 minute default
Sensor Sample Rate:	1 second for a battery powered device. (50 milliseconds for external power)	

Hardware Triggering— enable/disable the device hardware circuit that checks for position sensor input changes while the firmware is asleep, and issues a wake-up call if a change occurs.

Message 0

Message 1

Message 2

To configure a burst message manually select *Message 0*, *Message 1*, or *Message 2*. Open to view the current burst configuration. Select *Configure* and follow the prompts on the Field Communicator to configure *Message 0*, *1*, or *2*; review and choose to accept the changes or to continue to modify the configuration. Once accepted the information is sent to the device. The device processes the information, providing feedback about any errors that may have resulted.

Enabling burst mode provides periodic publication of the configured messages to the gateway. The gateway maintains a cache of this published information. It then acts as a proxy for all wireless devices by fulfilling routine host requests using the latest data in its cache.

Note

It is recommended that you set burst mode to defaults during initial setup, and make any detailed adjustments to burst configuration after the device is connected to an operating wireless network.

Burst mode is only supported over the wireless link. No burst transmissions are made over the wired Maintenance Port connection.

To select the basic message content, choose from *Primary Variable*, *PV % Range and Loop Current*, *Dynamic Variables and Current*, *Selected Device Variables*, *Additional Status*, *Emerson Specific*, and *Discrete Variables*.

If *Dynamic Variables and Current*, *Selected Device Variables*, or *Emerson Specific* are chosen for basic content, you can configure individual device variables in the message slots. Select variables from the available drop-down or selection list that are relevant for your application.

Note

Variables marked with an asterisk (*) are not calculated by the device under the current installed options and/or structure configuration. They should not be assigned for publication unless your host will not function correctly without them.

If an Emerson Gateway is in use, the 'Emerson-Specific' choice can be used. It combines the four Dynamic Variables and the Additional Status in one message. However, it does not include the Loop Current or PV % Range variables. If the control system requires PV % Range and Loop Current, make sure that these two variables are included in a message configured for 'Selected Device Variables'.

Advanced Wireless Reporting (Report By Exception and Delayed Triggering)

Report By Exception (RBX) or Triggered Burst Mode allow you transmit data only when a change occurs. When a triggered burst mode is enabled, a “trigger” variable is identified, and the data is sampled and published at a fast rate when there is a significant change in the monitored trigger variable. A slower “default” rate is used when the trigger conditions are not met. This feature results in lower energy consumption by the device, as there are fewer data transmissions. You can define what is a “significant” change, as well as the values of the fast and default update rates.

To use this feature, configure one of the triggered burst modes. The “triggered” burst modes include: Windowed, Rising, Falling, and On-Change trigger modes.

- **Windowed**— allows you to define a +/- boundary around the last sampled of the trigger variable. The trigger variable must change by more than that “window” to trigger the fast update rate.
- **Rising**— the faster updates begin when the value of the trigger variable rises above the trigger level you select.
- **Falling**— the faster updates begin when the value of the trigger variable falls below the trigger level you select.
- **On-Change**— the whole burst message content is monitored for the slightest change. Any change initiates the fast update rate.

Note

On-Change trigger mode is used for messages that contain discrete data. It should not be used on messages that contain floating point data that dithers as a result of system noise or resolution limitations, such as the temperature variable.

The trigger variable varies with the selected message content. When “Selected Device Variables” is the general burst message content, the variable that you assign to slot 0 in the Detailed Message Contents is the one monitored against the trigger conditions. In most cases the assigned trigger variable is one of the process-related variables, i.e., one of the 3 switch state signals. In other configurations of general message content, the trigger variable is predefined and can be determined by viewing the configuration data.

Sensor Sample Rate—If any burst message is being triggered (is not in Continuous mode) a common sensor sample rate is used for all data acquisition. For battery-powered devices, select a value between 0.5 seconds and the Triggered Update Rate, in increments of 0.5 seconds.

Normally, the device wakes up to sample the data for a burst message in preparation for each scheduled publishing event. In some applications it is possible to miss transitions that occur between the update intervals. Delayed Triggering reduces the possibility of this occurring by defining a faster sample rate for monitoring. The sample rate should be faster than the published rate. When a trigger condition is detected by the Delayed Triggering mechanism, the time stamp and data are captured immediately. Publishing of the message is scheduled for the next available publishing slot. For example; if you have the default update rate set for 1 minute, and the fast update rate set to 8 seconds, enabling Delayed Triggering with a 1/2 second sample rate allows you to detect a trigger event almost as soon as it occurs. Without Delayed Triggering, transient events that occur *during* the 8 seconds interval are not detected.

- Device

Identification

Tag—enter the HART tag for the instrument (up to 8 characters). The HART tag is the easiest way to distinguish between instruments in a multi-instrument environment. Use the HART tag to label instruments electronically according to the requirements of your application. The tag you assign is automatically displayed when the Field Communicator establishes contact with the 4310 at power-up.

Long Tag—enter the HART Long Tag information (up to 32 characters).

Date—enter a date (mm/dd/yyyy) associated with configuration, commissioning, or maintenance history.

Description—enter a descriptor for the application with up to 16 characters. The descriptor provides a longer user-defined electronic label to assist with more specific instrument identification than is available with the HART tag.

Message—enter any message with up to 32 characters. Message provides the most specific user-defined means for identifying individual instruments in multi-instrument environments.

Polling Address—used by the Host to identify a field device on the wired maintenance port (valid range is 0 through 63). It has no significance on the wireless network and can only be edited at the maintenance port.

Structure

Snap Acting Control—when enabled, control valve action is derived from the position feedback or position being monitored. The controlled valve is separate from the position being monitored by the device. (There is no feedback signal for the controlled equipment.) The state of the switch monitoring the sensor generates the command to the controlled equipment.

Direct-Acting Snap—high or open trip on the input causes the controlled valve to open. Low or closed trip on the input causes the controlled valve to close.

Reverse-Acting Snap—high or open trip causes the controlled valve to close. Low or closed trip causes the controlled valve to open.

Adjust switch thresholds and deadband for additional refinement of this behavior. If the device is a controller and not in snap-acting mode, it may not report the Process state or use a latching switch mode.

When snap-acting mode is disabled, the device is in normal feedback control mode.

Note

Snap Acting Control is only available for units equipped with the on/off control option.

Latching Mode—when enabled, any change to the specified switch state (either opened/high or closed/low) will be latched (or locked) in that condition until the latch mode is manually reset. Latching mode is disabled when in snap-acting mode.

Note

Latching Mode can only be used in monitoring and snap-acting control applications. It is disabled in normal feedback control mode.

Application Mode—indicates sensor reporting mode: process feedback or valve travel feedback. A device with the controller option installed must report valve travel when not in snap-acting mode.

Configure Structure—select whether the control mode is snap-acting, whether the switch state will latch when tripped, and whether the position variable is labeled for valve or process reporting.

Operational Options

Valve Retry Enabled - when enabled, the device will automatically attempt to drive the controlled equipment back to the set point 3 times before tripping the Valve Drift monitor. (On/off control only)

Dwell Tracking - when enabled provides increased resolution for dwell time measurements in monitor devices by increasing the internal position-sampling rate to about 11 samples per second when a position change is detected. (monitoring only)

Fast sampling ends when position changes remain below 1% for the Tracking Debounce Count. Enhanced Dwell Tracking will work best when Hardware Triggering is also enabled.

When Dwell Tracking appears as an Operational Option, an additional menu item appears below it:

Tracking Debounce Count - the number of samples during which position change must be less than 1% of span before terminating fast sampling for the enhanced dwell-time measurement.

Note

Operational Options is not available when the device is in snap acting mode.

Discrete Variable Properties

Switch State Properties and *Set Point Properties*—includes type, class, and connection information.

Note

Set Point Properties is only available for units equipped with the on/off control option.

● **Limit Switch Configuration**

Switch State / Latching Switch—indicates the position of the monitored equipment (e.g. valve) as a discrete value; Opened, Closed, Part-Open, Low, Mid, High, or Unknown (displayed for reference).

Opened/High Trip Point and *Closed/Low Trip Point*—user-defined threshold that determines when the monitored condition is declared tripped.

Deadband—the amount of return travel inside the threshold that must occur before a tripped state is reset. Valid values are from 0% to 20%. Default value is 5%.

Edit Parameters—sets the trip points and the deadband for the limit switches under procedural control to prevent selections that could lead to indeterminate switch states.

● **Mapping**—allows configuration of the dynamic variable array. Select *Set to Defaults* to reset to the default values.

Warning Information— If your control system polls devices by using HART Command 3, either 'Dynamic Variables + Current' must be configured as the content of one of the burst messages, or the Loop Current and the Device Variables that you have mapped to Dynamic Variables must be included in the data being published. The 'Delayed Response' mechanism will be used to acquire variables that are not being published, and your host may interpret that as a communications failure.

- **Fault Behavior (On/Off Control)**

The device can be configured to enter a Fault State that attempts to drive the pneumatic output to the configured "fault state".

Note

When a fault condition is enabled and is active (i.e., in the fault state), the device does not act on the set point from the host. The device controls the valve using the set point defined during configuration.

All Fault Conditions are disabled by default.

Active Fault Conditions (reference)

Enable Fault Conditions

Select On to enable the follow fault conditions.

- **Start Up**— initiate the 'Fault State' whenever the device is powered up or reset. This allows forcing output to a specified state on start-up. In Automatic Recovery Mode, this fault state will clear upon receipt of a fresh discrete set point from the control host.
- **Movement Failure**— initiate the fault state if the valve has failed to move to the set point in before the Valve Timeout has expired. (Does not appear in snap-acting mode).
- **Temperature Out of Range**— initiate the fault state if the temperature is outside of its operating range.
- **Sensor Board Failure**— initiate the fault state if the device loses communications with the sensor board.
- **Low Voltage**— initiate the fault state if the supply voltage reaches the critically low level.
- **Network Loss**— initiate the fault state if disconnected from the network.

Fault Behavior Details

- **Fault Mode**— select a fault mode: Disabled, Fail to Specific State, or Hold Last Value. Default is Disabled.
- **Fault Shed Time**— set the amount of time the condition is in effect before the fault behavior is initiated.
- **Fault State**— select the fault state that the device is commanded to when the fault occurs. The Fault State value is ignored unless Fault Mode is 'Specific State'.
- **Recovery Mode**— select Automatic or Acknowledge. Automatic causes the device to return to normal operation once the fault conditions clear. If Acknowledge is selected, you must manually acknowledge the fault after clearing it before the device can be returned to service.

Mode—In Service, Not in Service, or In Fault State. Used to troubleshoot when the device is In Fault State, or to take the device out of service and put back in service.

- **Local User Interface**

Allows you to edit or view *Calibration Locked Out*, *Override Locked Out*, and *Mode Change Locked Out*, and *LUI Language*.

Note

Override Locked Out and *Mode Changed Locked Out* are not visible with the monitoring option.

- **Power Module**

Allows you to edit or view *Power Module Type*, *Voltage*, *Power Module Date*, *Battery Life*, and *Reset Module Data*.

Note

The Power Module menu is only available for a battery-powered device. Power Module will not be displayed if the External Power option is installed.

Contact your [Emerson Process Management sales office](#) if a replacement power module is required. Do not re-use power modules from other units.

Alert Setup

Alert Setup allows you to select which user-configurable diagnostic monitors report the various device conditions as alerts to the host. The current states of the associated alerts are displayed for reference. The menu structure varies with device structure and installed options. Only those device monitors that are actually available in the given system state are presented for editing. Follow the prompts on the Field Communicator to view or edit *Cycle Counter*, *Switch State Alerts*, *Switch Response Alerts*, and *Controller Alerts*.

- **Cycle Counter**

Cycle Counter Alert—indicates the current status of the cycle count alert. If the accumulated cycles exceed the trip point the alert will be set to True.

Accumulated Count—indicates the number of accumulated cycles.

Reset Accumulated Count—select Yes to reset the accumulated count to 0 (zero). This is typically done when maintenance to valve and/or actuator has been performed. Select No to retain the current cycle count.

Enable Cycle Count Alert

Cycle Trip Point—used to adjust the trip point.

- **Switch State Alerts**—select the switch state monitors that report their outputs as status alerts.

Switch Latched—condition of the optional latch for the switch state variable.

Opened/High Limit Tripped—indicates the input signal meets the user-specified requirements for the opened or high limit.

Closed/Low Limit Tripped—indicates the input signal meets the user-specified requirements for the closed or low limit.

Enable 'Latched' Alert—enables the alert reporting that the switch state is latched. If latching mode is active, this alert must be enabled.

Enable 'Opened/High' Alert—enables the alert reporting that the valve is opened, or the PV is above the high trip point.

Enable 'Closed/Low' Alert—enables the alert reporting that the valve is closed, or the PV is below the low trip point.

- **Switch Response Alerts**

Note

Switch Response alerts are not available in snap-acting mode.

Transition Alert—when enabled indicates the process state is in transition (i.e. between limits).

Transition Dwell Alert—when enabled indicates that the input signal has been in the transition state for longer than the specified time window.

Transition Dwell—indicates the length of time in the current state.

Enable 'In Transition'—enables the alert reporting that the position signal is between trip points.

Enable 'Transition Dwell'—enables the alert reporting that the output has spent excessive time between trip points.

Transition Dwell Threshold—indicates the length of time the monitored signal must remain in the transition state before the Transition Dwell alert is set.

- **Controller Alerts (On/Off Control)**

Note

Controller Alerts are disabled by default.

Mode Alerts

Device Not in Service—indicates the Set Point is not being applied to the process.

Output Fault State—indicates that the control output has been driven to the configured fault state.

Enable 'Out of Service'

Enable 'Fault State' Alert

Tracking Alerts

Note

Tracking Alerts are not available in snap-acting mode.

Valve Movement Fail—indicates the position feedback from the controlled equipment has not responded to the set point command.

Valve Drift—indicates the valve has deviated from the set point.

Enable 'Movement Fail' Alert

Valve Timeout—defines the time allotted for achieving the set point before declaring a valve movement failure.

Enable 'Valve Drift'

Close Time Alerts

Note

Close Time Alerts are not available in snap-acting mode.

Close Stroke Time Alert—indicates that the last close action fell outside the time limits allowed by the configuration.

Close Stroke (Cal)—indicates the time required to complete close stroke during Auto Calibration.

Last Close Stroke—indicates the time required to complete the most recent stroke from opened to closed position.

Enable 'Close Stroke'

High Trip Point

Low Trip Point

Open Time Alerts

Note

Open Time Alerts are not available in snap-acting mode.

Open Stroke Time Alert—indicates that the last open stroke time fell outside the time limits allowed by the configuration.

Open Stroke (Cal)—indicates the time required to complete open stroke during Auto Calibration.

Last Open Stroke—indicates the time required to complete the most recent stroke from closed to opened position.

Enable 'Open Stroke'

High Trip Point

Low Trip Point

Calibration

⚠ WARNING

During calibration the valve will move full stroke. To avoid personal injury and property damage caused by the release of pressure or process fluid, isolate the valve from the process and equalize pressure on both sides of the valve or bleed off the process fluid.

Note

You cannot change the valve set point (i.e. open to closed) when the instrument is in snap-acting mode. This is because the position signal from the monitored equipment is used to change the state of a different valve. Refer to figure 3 on page 3. Manual calibration of the output is required when in snap-acting mode.

Calibration Date—indicates when the instrument was last calibrated.

Note

The Not Calibrated Alert replaces *Calibration Date* when it is active.

Sensor Calibration—allows you to run a calibration on the instrument. Follow the prompts on the Field Communicator to run Auto or Manual Calibration.

Note

If it takes longer than 5 minutes to move the valve in each direction during Auto Calibration, Manual Calibration will need to be performed. A normal auto calibration moves from Open > Closed > Open > Closed, and may take up to 20 minutes.

Output Assignment—allows you to associate the output ports with a stroke direction (open or close) by observing the action during a stroke. This procedure is used to complete a controller calibration process if Manual Calibration was used for the sensor, and is the only way to assign output sense in snap-acting mode.

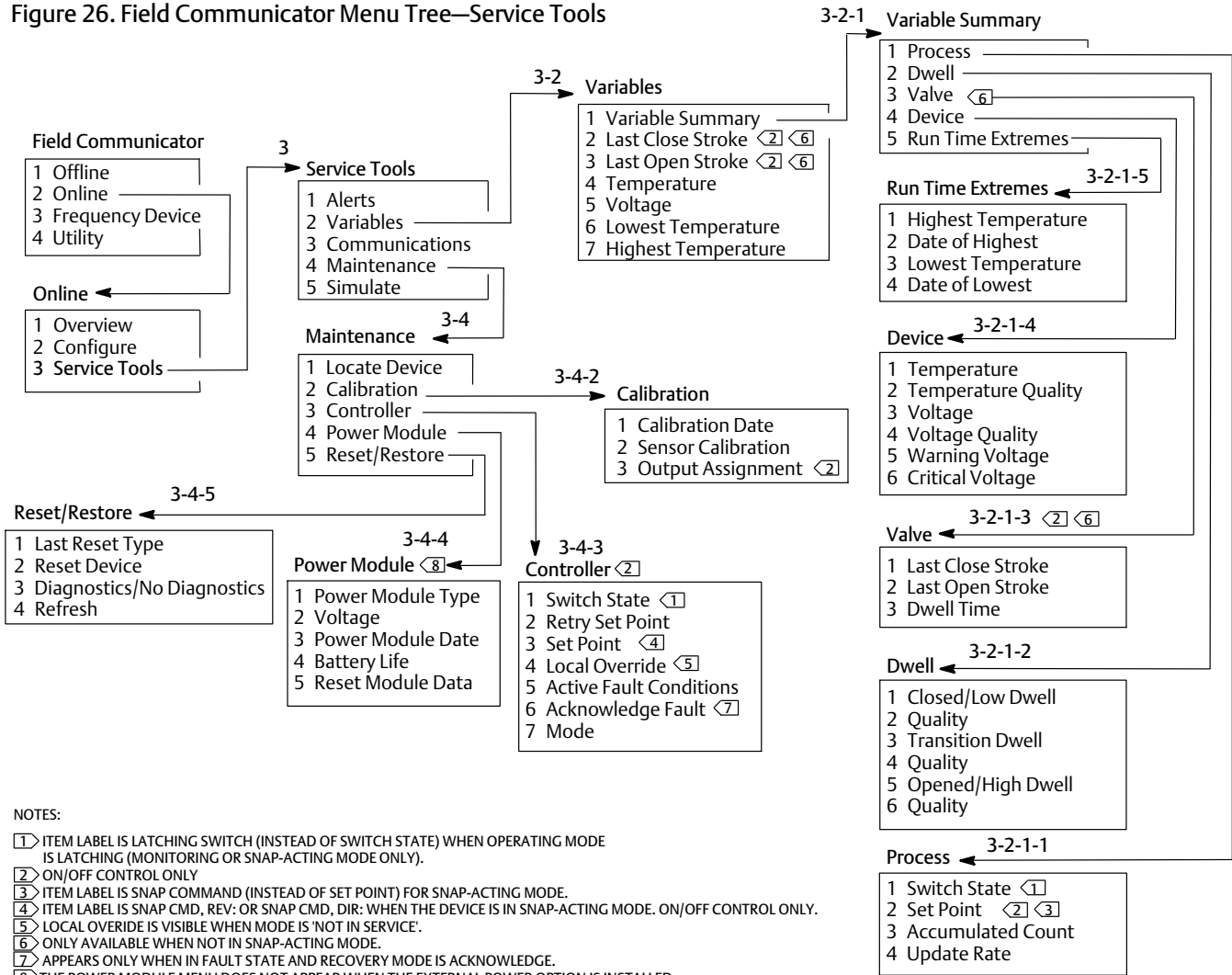
Note

Output Assignment is only available for units equipped with the on/off control option.

Service Tools

Refer to figure 26 for the Service Tools menu tree.

Figure 26. Field Communicator Menu Tree—Service Tools



Alerts

Indicates active alerts, and displays: Plant Web Alert category, description, recommended actions, and any applicable variable values, images, or procedures that may help to resolve the alert conditions.

Variables

Select *Variable Summary* to review the *Process*, *Dwell*, *Valve*, *Device*, and *Run Time Extreme* variables contained in the device. Select *Last Close Stroke*, *Last Open Stroke*, *Temperature*, *Voltage*, *Lowest Temperature*, and *Highest Temperature* to view gauge-style presentations of the variables.

- Variable Summary

Process

Switch State—dictates the position of the monitored equipment (e.g. valve) as a discrete value.

Set Point— indicates the target value for the controlled variable.

Note

This menu item (*Set Point*) is *Snap Command* when the device is in snap-acting mode.

Open *Position*, *Switch*, or *Set Point* to view the overall process data quality of the item. Values are Good, Degraded, Bad, or Manual/Fixed.

Accumulated Count—the number of cycles that have accumulated since the last time the counter was reset to zero.

Update Rate—indicates the effective update rate for each of the variables displayed in the Process menu.

Dwell

Closed/Low Dwell—the time elapsed since the switch state last entered the Closed/Low region (freezes when state leaves that region).

Transition Dwell—the time elapsed since the switch state entered the Transition region (freezes when state leaves that region).

Opened/High Dwell—the time elapsed since the switch state entered the Opened/High region (freezes when state leaves that region).

Quality variables below *Closed/Low Dwell*, *Transition Dwell*, and *Opened/High Dwell* indicate the overall process data quality of the item. Values are Good, Degraded, Bad, or Manual/Fixed.

Valve (On/Off Control)

Note

Valve variables are only available when not in snap-acting mode.

Last Close Stroke—the time needed to complete the most recent stroke from opened to closed.

Last Open Stroke—the time needed to complete the most recent stroke from closed to opened.

Quality variables below *Last Close Stroke* and *Last Open Stroke* indicate the overall process data quality of the item. Values are Good, Degraded, Bad, or Manual/Fixed.

Dwell Time—the length of time that the Switch States variable has spent in the current state.

Device

Temperature—indicates the temperature of the electronics.

Voltage—indicates the power module voltage.

Quality variables below *Temperature* and *Voltage* indicate the overall process data quality of the item. Values are Good, Degraded, Bad, or Manual/Fixed.

Note

Power module warnings generally only apply to the standard and extended life power modules.

An external power sourced 4310 will provide the supply voltage levels from the output of the external power assembly, not the voltage of the supply source.

Warning Voltage—the threshold for the power module low-voltage warning.

Critical Voltage—the threshold for the power module critical-voltage warning. Device configuration changes are prohibited below this voltage.

Run Time Extremes—includes *Highest Temperature*, *Date of Highest*, *Lowest Temperature*, and *Date of Lowest*.

Select *Last Close Stroke*, *Last Open Stroke*, *Temperature*, *Voltage*, *Lowest Temperature*, *Highest Temperature* to view dynamic gauge displays.

Note

Last Close Stroke and Last Open Stroke gauges only appear with the on/off control option and not in snap-acting mode.

Communications

Contains Network and Burst information. Follow the Field Communicator prompts to access *Network*, *Review Burst Message*, *Hardware Triggering*, and *Review Event Configuration*.

Network

Wireless Mode—indicates the current mode; Idle, Disconnected, Searching, Connected, or Operational

Join Mode—gives instructions to the device with regard to joining the *WirelessHART* network.

Advanced— contains technical information about communications, such as the number of neighbors recognized by the instrument on the wireless network, the number of Advertisement packets received, and the number of Join Attempts. This menu also displays the Transmit Power setting and the Change Power procedure, which adjusts the effective radiated power of the device radio module.

Note

Too many Join Attempts will result in the device considering the join failed; review network configuration.

Note

Advanced network diagnostics are only available in AMS Wireless Configurator or AMS Device Manager when talking to the device over the maintenance port.

Rejoin Network—reconnect to network with existing credentials.

Disconnect—drop off the network. This should only be done if recommissioning or performing a service procedure that interferes with network operation.

Review Burst Message

Burst shows diagnostics for each burst message.

The message Bandwidth Status shows:

- whether a given message is enabled in the device
- whether it is still waiting for bandwidth allocation from the network for its requested update rate
- whether it has been assigned bandwidth but at a lower rate than requested
- whether it is actively publishing
- whether it is in Delayed Publishing mode (Using Delayed Trigger mechanism).

The configured Message Content, Trigger Mode, and active Update Rate are displayed next.

If the message is enabled, you can view a snapshot of the values that would be published in the message, based on the current device states.

Hardware Triggering

Details associated with the device hardware circuit that checks for position sensor input changes while the firmware is asleep, and issues a wake-up call if a change occurs. An estimate of the sensitivity and a count of the number of times the circuit has tripped since the counter was last cleared is provided; this may be used to help balance triggering response, battery life, and traffic on the wireless network.

Detection Count—indicates the number of times the hardware position change interrupt has tripped since the last reset.

Clear Change Detection Count—resets the count of change detection trips to zero.

Sensitivity— Active Sensitivity, Low Temperature, Room Temperature, High Temperature

Change Detection—enables/disables the hardware change detection circuit that wakes up the device when a measurable change occurs at the sensor.

Review Event— includes *Events Logged*, *Bandwidth Status*, *Retry Rate*, *Allocated Retry Rate*, and *Event Status*.

Maintenance

Follow the Field Communicator prompts to access *Locate Device*, *Calibration*, *Controller*, *Power Module*, *Reset/Restore*.

- **Locate Device** —select Locate Device to command the device to display the Emerson logo to assist a technician in locating it. Specify the number of repeats at approximate 5 minutes each.

Note

Locate Device is unavailable when the temperature is too low for a usable display, or if the LUI is currently in use for a local function.

- Calibration—used to set travel or rotation end points.

⚠ WARNING

During calibration the valve will move full stroke. To avoid personal injury and property damage caused by the release of pressure or process fluid, isolate the valve from the process and equalize pressure on both sides of the valve or bleed off the process fluid.

Note

You cannot change the valve set point (i.e. open to closed) when the instrument is in snap-acting mode. This is because the position signal from the monitored equipment is used to change the state of a different valve. Refer to figure 3 on page 3. Manual calibration of the output is required when in snap-acting mode.

Calibration Date—indicates when the instrument was last calibrated.

Sensor Calibration—allows you to run a calibration on the instrument. Follow the prompts on the Field Communicator to run Auto or Manual Calibration.

Note

If it takes longer than 5 minutes to move the valve in each direction during Auto Calibration, Manual Calibration will need to be performed. A normal auto calibration moves from Open > Closed > Open > Closed, and may take up to 20 minutes.

Output Assignment—allows you to associate the output ports with a stroke direction (open or close) by observing the action during a stroke. This procedure is used to complete a controller calibration process if Manual Calibration was used for the sensor, and is the only way to assign output sense in snap-acting mode.

Note

Output Assignment is only available for units equipped with the on/off control option.

- **Controller (On/Off Control)**

Follow the Field Communicator prompts to view or edit the following:

Switch State—indicates the position of the monitored equipment (e.g. valve) as a discrete value.

Retry Set Point— this procedure will try to move the valve to the set point to help clear a movement failure.

Set Point—indicates the target value for the controlled variable.

Note

This menu item (*Set Point*) is *Snap Command* when the device is in snap-acting mode.

Local Override (available when mode is Not in Service)—allows you to command the device output state from the configuration interface, for maintenance purposes. The Set Point being received from the control host is maintained in memory and restored when the device is returned to service.

Active Fault Conditions—displays which fault conditions have initiated the fault state.

Acknowledge Fault State—used to clear a Fault State after all active Fault Conditions have been corrected.

Note

Acknowledge Fault State only appears when in fault state and Recovery Mode is ACKNOWLEDGE.

Mode—displays the device control mode; In Service, Not in Service, or In Fault State. Open to change the mode or troubleshoot a Fault State.

- **Power Module**

Note

The Power Module menu is only available for a battery-powered device. Power Module will not be displayed if the External Power option is installed.

Follow the Field Communicator prompts to view the following:

Power Module Type, Voltage,

Power Module Date—the date when the power module variables were reset; this should coincide with the power module installation date.

Battery Life—estimate of the number of days of operation remaining, based on the current state of charge and power usage.

Reset Module Data

- **Reset/Restore**

Last Reset Type—indicates the reason for the most recent device reset; used for troubleshooting.

Reset Device—the equivalent of a power cycle, and will cause the device to drop off the wireless network, affecting communications for any neighbor devices that are passing packets through it. Only recommended when instructed by service personnel.

Diagnostics / No Diagnostics—used by service personnel for troubleshooting.

Refresh—select to obtain the current values of *Diagnostics* and *Last Reset Type*.

Accessing Features

Trip Points and Deadband

The 4310 is shipped with a factory default setting of 10% for the Open Trip Point and 90% for the Closed Trip Point. The Deadband is set at 5%.

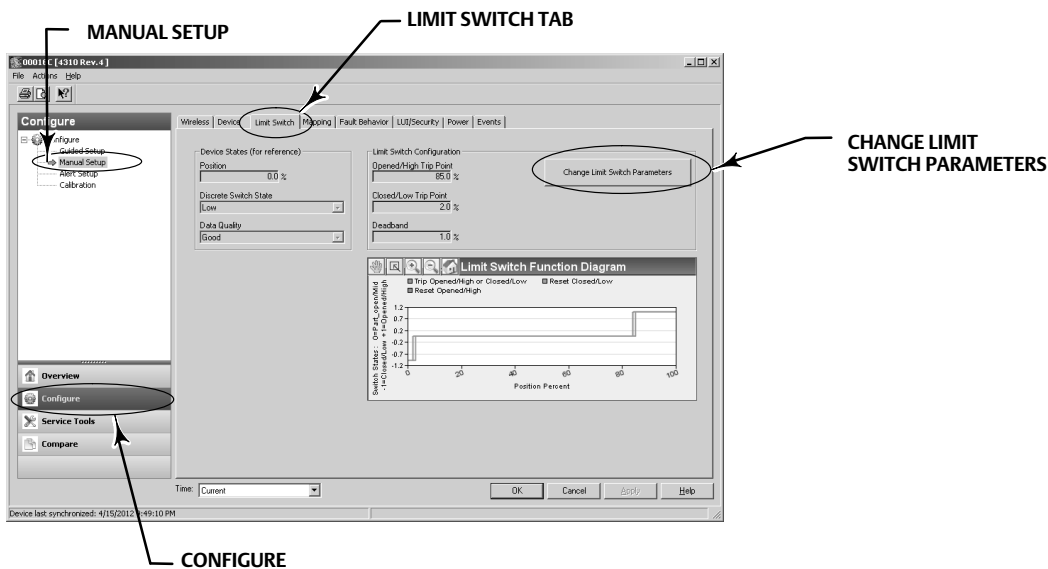
Field Communicator

Select *Online*, *Configure*, *Manual Setup*, then *Limit Switch Configuration* to verify or make changes to the trip point settings. Refer to the Configure menu tree shown in figure 25.

AMS Wireless Configurator or AMS Device Manager

Go to *Configure*, *Manual Setup*, then select *Change Limit Switch Parameters* from the Limit Switch tab to make changes to the trip point settings. See figure 27.

Figure 27. Setting Trip Point in AMS Wireless Configurator and AMS Device Manager



Diagnostic Features

The 4310 includes the following diagnostics which can be accessed using the Field Communicator, AMS Wireless Configurator, or AMS Device Manager.

- Cycle counter is shipped from factory with a high value. This alert is used with valves that have service recommendations based on number of actuation cycles. *Reset Accumulated Count* is used to clear the accumulated count value. This is typically done when maintenance to valve and/or actuator has been performed. Refer to page 43 for additional information on Cycle Counter.

Refer to figure 25 and 26 for the Field Communicator menu trees.

In AMS Wireless Configurator or AMS Device Manager go to *Configure, Alert Set-up*. Enter the Cycle Trip Point value on the Cycle Counter tab to set the cycle counter. When the value turns yellow (indicating that a change has been made) select *Apply*. Refer to figure 28.

To clear the accumulated cycle value select *Reset Accumulated Count*.

- Power status indicates the status of the power module voltage.

Refer to figure 25 and 26 for the Field Communicator menu trees.

In AMS Wireless Configurator or AMS Device Manager go to *Service Tools, Variables*, then select the Device tab to view the power module voltage status. Refer to figure 29.

Figure 28. Resetting the Accumulated Count in AMS Wireless Configurator and AMS Device Manager

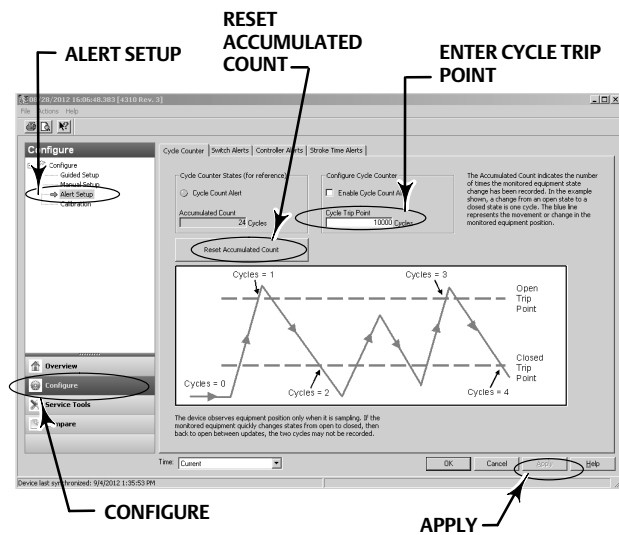
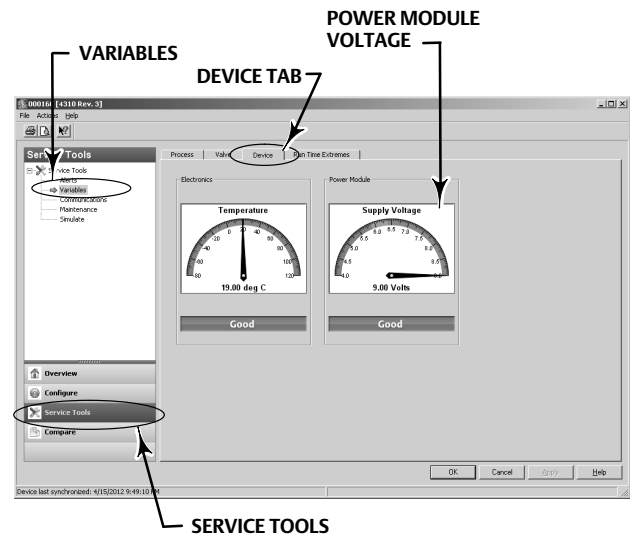


Figure 29. Power Status in AMS Wireless Configurator and AMS Device Manager



Note

The 4310 also includes a power module voltage warning and a critical power failure alert. These can be viewed through the gateway web interface. Look under *Monitor* then *Point Data* and select your device from the available HART tags.

There are two fields (true or false) that can be mapped into Modbus, OPC, or DeltaV:

- TAG.BATTERY_WARNING_GETTING_LOW and
- TAG.CRITICAL_POWER_FAILURE

BATTERY_WARNING_GETTING_LOW occurs at approximately 6.5 volts, at room temperature, and should be used to indicate that maintenance should be performed or scheduled soon.

CRITICAL_POWER_FAILURE occurs at approximately 6 volts, at room temperature, and should be used to indicate that maintenance should be performed or scheduled immediately.

For information on using Modbus or OPC with the 4310 refer to [4310/4320 Wireless Position Monitor OPC System Integration Guide \(D103530X012\)](#) or [4310/4320 Wireless Position Monitor Modbus System Integration Guide \(D103529X012\)](#), available from your [Emerson Process Management sales office](#) or at www.emersonprocess.com.

- **Open or close stroke time** indicates how long the on/off controller took to previously open or close the valve (not available in snap-acting mode). Increased stroke time could suggest increased packing or bearing friction, loss of motive-force, or trim clogging. Decreased stroke time could indicate the loss of process pressure or separated linkage.

Refer to figure 25 and 26 for the Field Communicator menu trees.

In AMS Wireless Configurator or AMS Device Manager go to *Service Tools, Variables*, then select the Valve tab to view **Last Close Stroke Time** or **Last Open Stroke Time** and the **Dwell Time** in the current state, as shown in figure 30.

- **Opened/high or closed/low dwell time** indicates how much time has elapsed since the switch state last entered opened/high or closed/low region. This can be used to determine when the valve last moved.

Transition Dwell provides the total elapsed time the valve was in the transition state - between limits. This was initially implemented for safety relief valve monitoring applications to eliminate the need of calculating the difference of timestamps sent to the control system host. This refers to the time the valve was not closed. In order for this feature to report correctly you must first map to the Transition Dwell as a published variable. Go to *Configure, Manual Setup* and click on the Wireless tab. Select View/Configure Message 0 (or whichever message is publishing *Selected Device Variable*). Click on Modify, then set Transition Dwell as one of the published variables. Click on Accept.

Refer to *Dwell Tracking* and *Tracking Debounce* under Operational Options on page 41 to enable and refine the Dwell Tracking feature.

Refer to figure 25 and 26 for the Field Communicator menu trees.

In AMS Wireless Configurator or AMS Device Manager go to *Service Tools, Variables*, select the Dwell tab and *Read Device Variables* to view **opened/high or closed/low dwell** and **transition dwell times**, as shown in figure 31. If communicating at the maintenance port, the *Read Dwell Variables* button does not appear, the Dwell Times are directly available on the Dwell tab.

Note

The screen shot in figure 31 is for a wireless connection.

Figure 30. Viewing Last Open and Close Stroke Time in AMS Wireless Configurator and AMS Device Manager

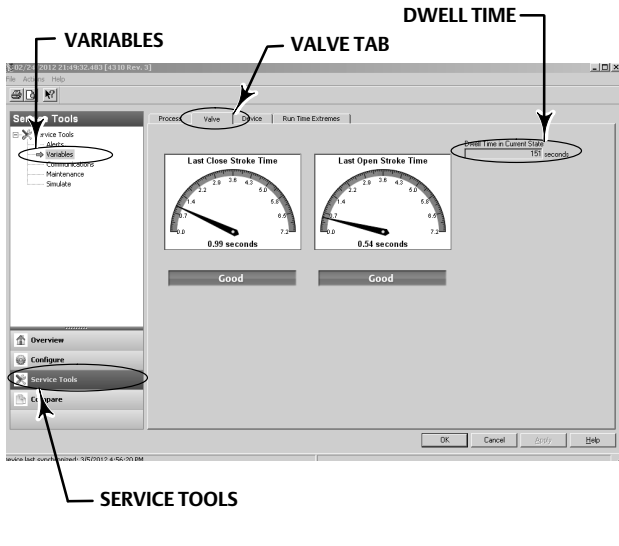
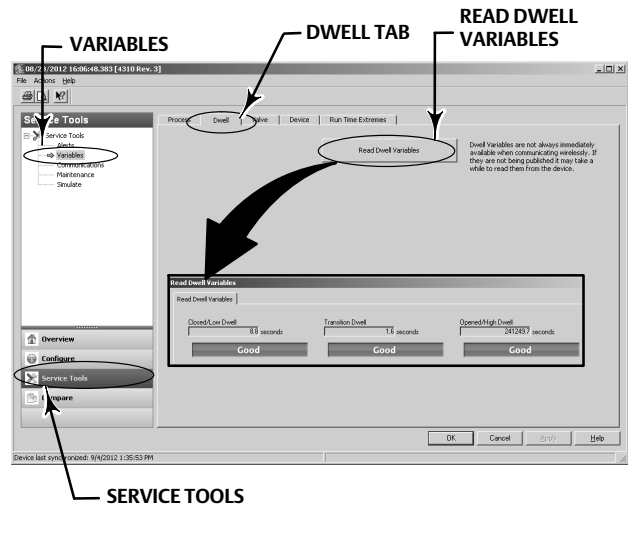


Figure 31. Viewing Dwell and Transition Dwell Times in AMS Wireless Configurator and AMS Device Manager

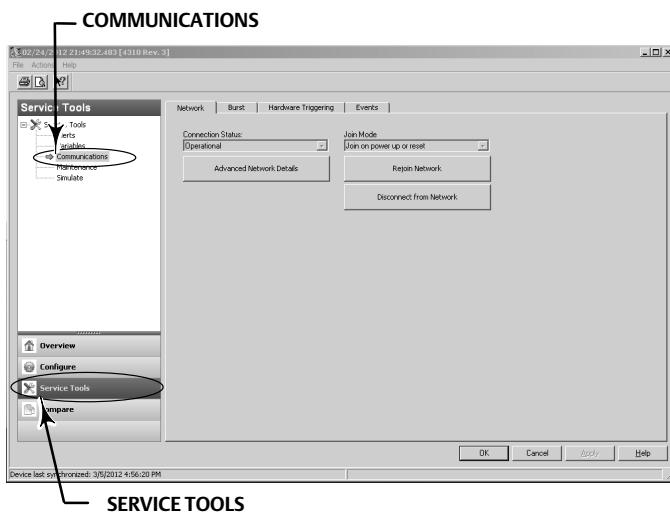


- Communications diagnostics allows you to review Network, Burst, Hardware Triggering, and Events information. Refer to page 49 for additional information on communications diagnostics.

Refer to figure 25 and 26 for the Field Communicator menu trees.

In AMS Wireless Configurator or AMS Device Manager go to *Service Tools*, *Communications* to access communications diagnostics. Refer to figure 32.

Figure 32. Accessing Communications Diagnostics in AMS Wireless Configurator and AMS Device Manager



- **Temperature extremes** indicate the highest and lowest temperatures experienced by the device since it has been placed in service.

Refer to figure 25 and 26 for the Field Communicator menu trees.

In AMS Wireless Configurator or AMS Device Manager go to *Service Tools*, *Variables*, then select the Run Time Extremes tab to view the temperature extremes, as shown in figure 33.

- **Active Fault Conditions** indicate which fault conditions have initiated the fault state (On/Off Control only).

Refer to figure 25 and 26 for the Field Communicator menu trees.

In AMS Wireless Configurator or AMS Device Manager go to *Service Tools*, *Maintenance*, then select the Controller tab to view the Active Fault Conditions, as shown in figure 34.

Figure 33. Viewing Run Time Extremes in AMS Wireless Configurator and AMS Device Manager

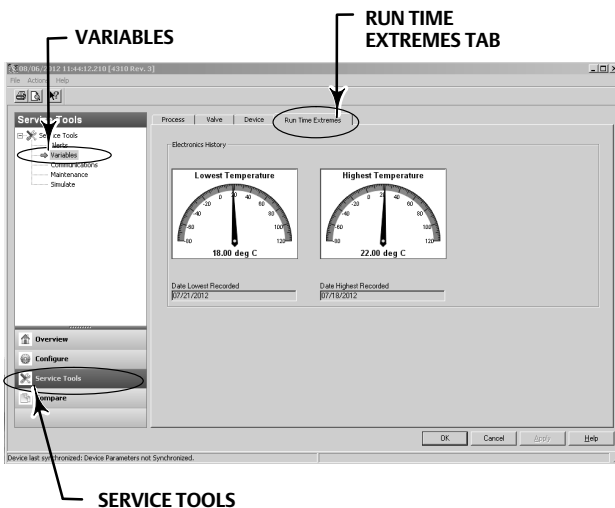
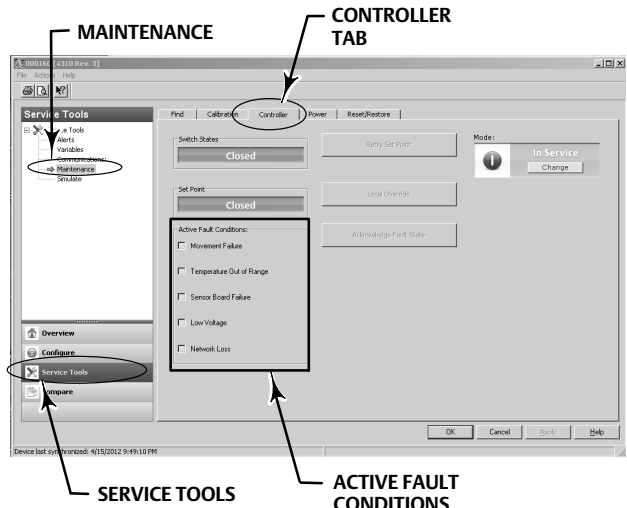


Figure 34. Viewing Active Fault Conditions in AMS Wireless Configurator and AMS Device Manager



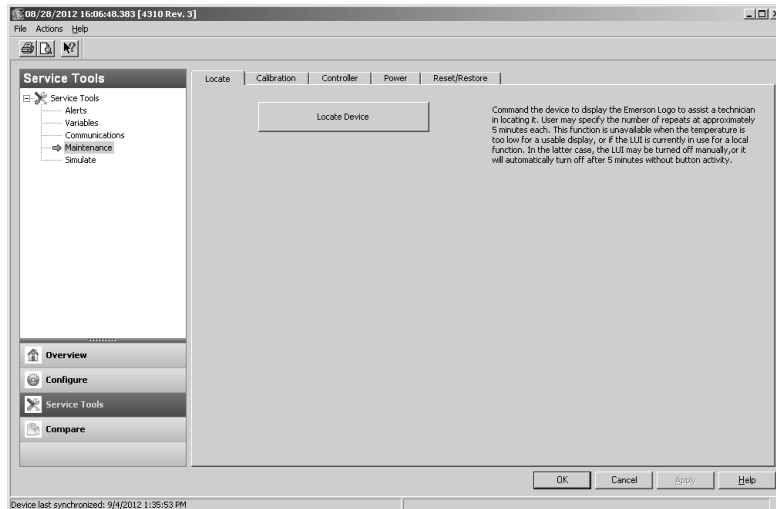
Locate

AMS Wireless Configurator or AMS Device Manager

Select *Online*, *Service Tools*, *Maintenance*, then *Locate Device* from the Locate tab to access Locate, as shown in figure 35. *Locate Device* displays the Emerson Logo steadily for 5 minutes on the local display of the device. You may select how many times the squawk is repeated at 5 minutes per request. This function is not available if the local display is too cold to work properly, or if the LCD screen is already being used locally by a technician. When the technician is finished they can manually turn off the screen. If the screen is left unattended for 5 minutes it will turn off automatically.

If the unit has been located before the squawk counts have been exhausted, the function can be cancelled at the DD screen. At the device's local screen, a technician can interrupt the Locate Device logo display by pressing any button.

Figure 35. Locate Device



Maintenance

⚠ WARNING

Always wear protective clothing, gloves, and eyewear when performing any maintenance procedures to avoid personal injury or property damage.

Do not remove the actuator from the valve while the valve is still pressurized.

Disconnect any operating lines providing air pressure, electric power, or a control signal to the actuator. Be sure the actuator cannot suddenly open or close the valve.

Use bypass valves or completely shut off the process to isolate the valve from process pressure. Relieve process pressure on both sides of the valve.

Use lock-out procedures to be sure that the above measures stay in effect while you work on the equipment.

Check with your process or safety engineer for any additional measures that must be taken to protect against process media.

⚠ WARNING

When using natural gas as the supply medium the following also applies:

- When disconnecting any of the pneumatic connections or any pressure retaining part, natural gas will seep from the unit and any connected equipment into the surrounding atmosphere. Personal injury or property damage may result if natural gas is used as the supply medium and appropriate preventive measures are not taken. Preventive measures may include, but are not limited to, one or more of the following: ensuring adequate ventilation and the removal of any ignition sources.
-

CAUTION

When replacing components, use only components specified by the factory. Always use proper component replacement techniques, as presented in this manual. Improper techniques or component selection may invalidate the product specifications, as indicated in table 1. Improper replacement techniques or component selection may also impair operations and the intended function of the device.

CAUTION

When replacing components, proper means of electrostatic discharge protection is required. Failure to use a grounding strap, or other means of electrostatic discharge protection can result in damage to the electronics.

Note

When operating in temperatures -20°C (-4°F) and below the LCD display will not operate and the push buttons will be disabled. If maintenance is needed and the use of the wired HART port is required, remove power from the 4310 and re-apply. The wired HART port will be usable for one hour.

Instrument Troubleshooting

As an aid to troubleshooting, table 5 lists some common operating faults, their probable causes, and suggests corrective actions.

Table 5. Instrument Troubleshooting

Symptom	Possible Cause	Action
1. Actuator does not move	1a. No (or low) supply air pressure	1a. Check supply air pressure
	1b. Air connections are incorrect for actuator type	1b. Correct air connections
2. Display shows "Span Error" when performing a manual calibration	2a. Rotary feedback magnet is off 90°	2a. Rotate feedback magnet 90° in either direction
	2b. Linear or arched array travels outside of marked range, as indicated by the white end marks on the array and the mid point on the back of the 4310 housing. See page 20.	2b. Adjust array and travel to fall within range of array end marks. See page 20.
3. Actuator moves once during automatic calibration and then stops	3a. Rotary feedback magnet is off 90°	3a. Rotate feedback magnet 90° in either direction
	3b. Linear or arched array travels outside of marked range, as indicated by the white end marks on the array and the mid point on the back of the 4310 housing. See page 20.	3b. Adjust array and travel to fall within range of array end marks. See page 20.
	3c. Actuator not reaching stable position	3c. Adjust supply pressure to ensure that actuator reaches end-stops
4. No response / excessive calibration time when performing Automatic Calibration	4a. Rotary feedback magnet is off 90°	4a. Rotate feedback magnet 90° in either direction
	4b. Linear or arched array travels outside of marked range, as indicated by the white end marks on the array and the mid point on the back of the 4310 housing. See page 20.	4b. Adjust array and travel to fall within range of array end marks. See page 20.
	4c. Actuator not reaching stable position	4c. Adjust supply pressure to ensure that actuator reaches end-stops

Replacing the instrument

To replace an instrument that has been previously mounted to a control valve, perform the following basic steps:

Instrument Removal

Remove the bolts connecting the 4310 housing to the mounting bracket.

Note

The magnet assembly may remain on the valve stem (or shaft).

When replacing the instrument, be sure to follow the appropriate mounting procedure. Once the instrument is mounted, perform the calibration routine before putting back in to service.

▲ WARNING

During calibration the valve will move full stroke. To avoid personal injury and property damage caused by the release of pressure or process fluid, isolate the valve from the process and equalize pressure on both sides of the valve or bleed off the process fluid.

Replacing the Magnetic Feedback Assembly

To remove the magnet assembly from the actuator stem, perform the following basic steps.

1. Remove the 4310 from the actuator.
2. Remove the screws holding the magnet assembly to the connector arm.

Install the new magnet assembly per the appropriate Installation/Mounting procedure. Once the instrument is mounted, perform the calibration routine before putting back in to service.

Replacing the Power Module

⚠ WARNING

Personal injury and property damage can result from fire or explosion if the power module, which contains two lithium-thionyl chloride (Li-SOCl₂) batteries, is subjected to heat above 100°C (212°F). Power modules should be stored in a cool, dry and ventilated area; for maximum life, storage should not exceed 30°C (86°F).

Note

The batteries contained in the field replaceable power module are not rechargeable. Contact your [Emerson Process Management sales office](#) if a replacement power module is required.

When operating in temperatures between -10°C (14°F) and -20°C (-4°F) it is recommended that you use the extended power module, as power module life is impacted. The life expectancy of an extended life power module used continually in the -10°C (14°F) and -20°C (-4°F) range is 3 years.

Note

Proper disposal of used power modules, which contain two lithium-thionyl chloride (Li-SOCl₂) batteries, is required. Disposal should be done in accordance with applicable local rules and regulations.

For additional information refer to the manufactures guidelines for disposal of lithium batteries:

http://www.tadiranbat.com/pdf.php?id=0111_-_Guidelines_for_Disposal_of_Lithium_Cells_and_Batteries (available at www.tadiranbat.com).

Removal

Refer to figure 5.

1. Loosen the two instrument cover screws and open the cover.
2. Remove the four screws providing the mechanical connection to the housing.
3. Disengage the power module from the banana plug connectors on the main board.
4. Remove the power module.

Installation

Refer to Installing Standard and Extended Life Power Modules on page 10. Recalibrate the instrument before putting it back into service.

Resetting Power Module Variables

When power modules are replaced, you must reset Battery Life Remaining (shown in figure 36), which can be used for scheduling maintenance of the power module. The counter can be reset using a Field Communicator or AMS Device Manager. Resetting this value will also change the Power Module Date.

Field Communicator

Select *Online, Configure, Manual Setup, Power Module*, then *Reset Module Data* to reset Battery Life. Refer to the Configure menu tree shown in figure 25.

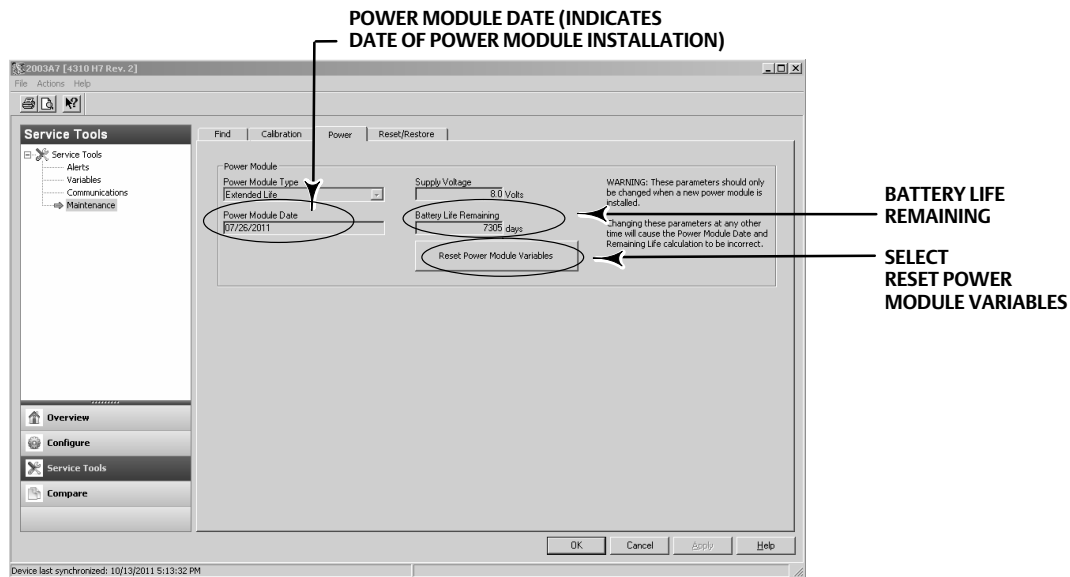
Note

Reset Module Date can also be accessed by selecting *Service Tools, Maintenance, and Power Module*.

AMS Wireless Configurator or AMS Device Manager

In AMS Device Manager select *Configure, Manual Setup*, then select *Reset Power Module Variables* from the Power tab, as shown in figure 36, to reset the power module variables.

Figure 36. Resetting Power Module Variables



1. A warning will be displayed, noting this should only be done when a new power module is installed. Select Next if you have replaced the power module. Select Cancel if the power module has not been replaced.
2. Select Yes when asked if you want to continue.
3. Press Next on the status screen displayed.

4. Select the installed power module type, Standard or Extended. Refer to figure 4 to identify the power module type. Select Next to continue.
5. Select Next on the Power Module Date status screen to continue.

Note

When the device initially joins the network and the Power Module Date has not been updated, the first date captured will be captured and stored. The power module date will be updated once the device is on the wireless network.

6. Select Next to complete the Resetting Power Module Variables procedure.

Component Maintenance—On/Off Control Option

Note

There are no replaceable components on the 4310 with the monitoring option.

Components are subject to normal wear and must be inspected and replaced as necessary. The frequency of inspection and replacement depends upon the severity of service conditions. Conditions that may affect component life include, but are not limited to: excessive water in the air line, freezing, or dirty air.

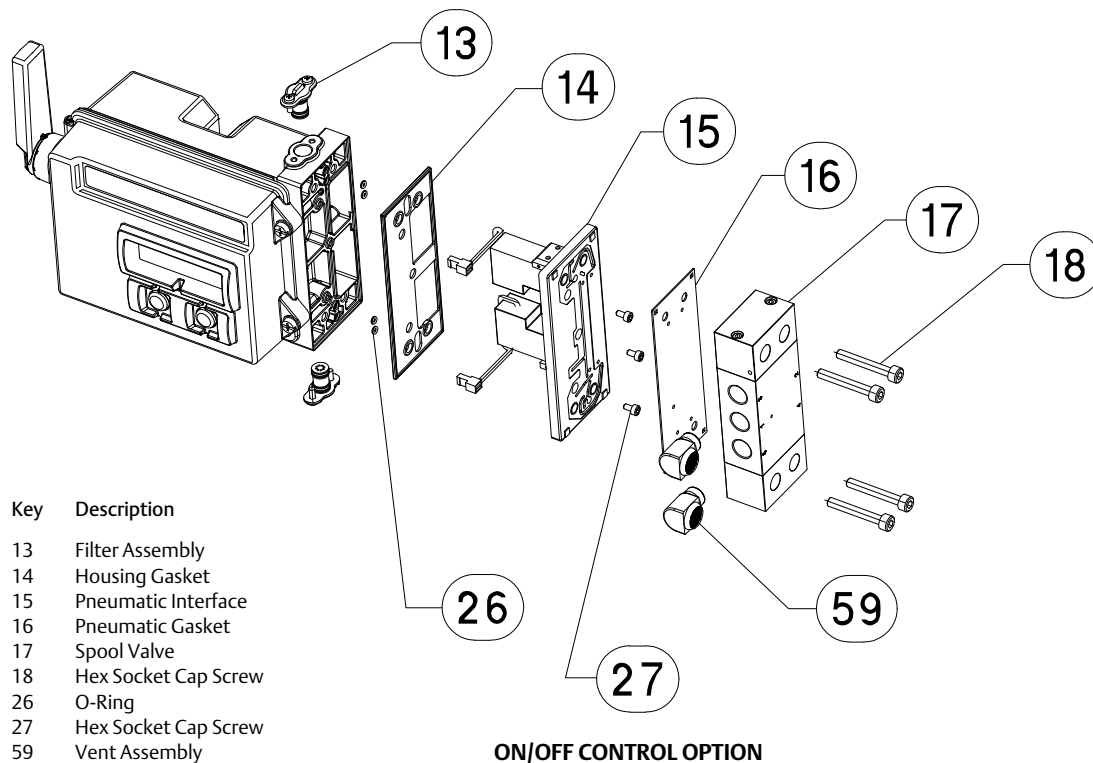
This section describes removing and replacing the spool valve and pneumatic gasket, the pneumatic interface and housing gasket, and the filter assembly.

Key numbers are shown in figure 37 unless otherwise indicated.

Spool Valve and Pneumatic Gasket Removal

1. Remove the four hex socket cap screws (key 18).
2. Carefully remove the spool valve (key 17). If needed, gentle prying can be used at the corners to assist in separating the spool valve from the 4310.
3. Remove the pneumatic gasket (key 16) from the device. Care is needed as the gasket may stick to the spool valve or the outside face of the pneumatic interface.
4. Follow the instructions below to install a new spool valve and gasket.

Figure 37. TopWorx 4310 Assembly



GE53345-C

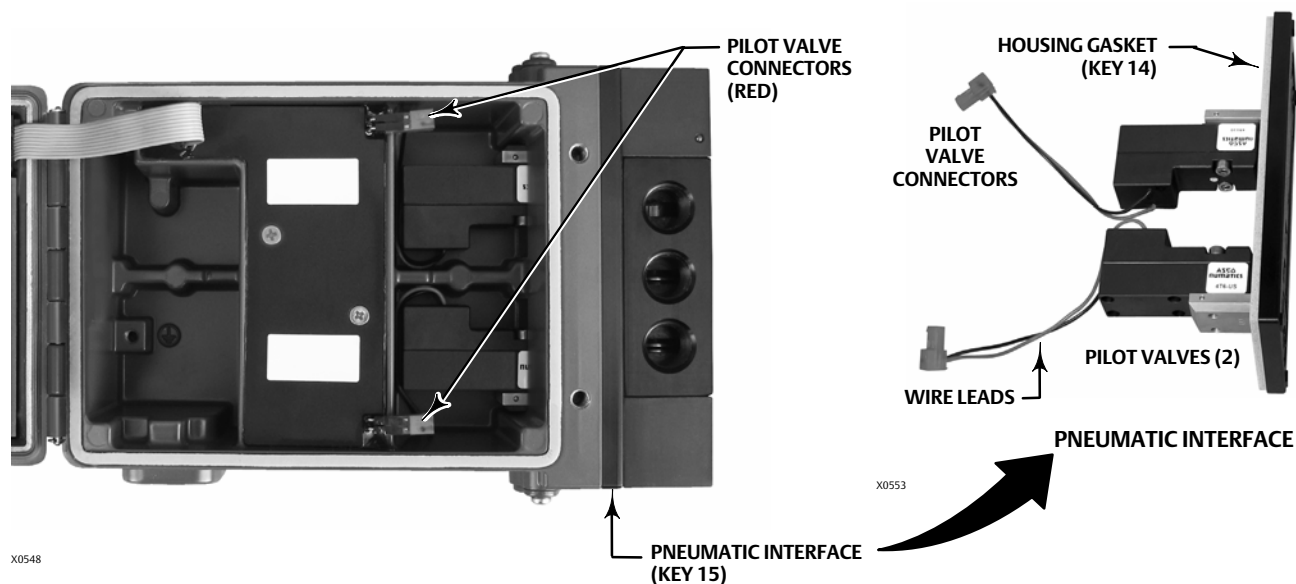
Spool Valve and Pneumatic Gasket Installation

1. Align the five small holes on the gasket (key 16) with the five small holes on the spool valve (key 17). Inserting two or more of the hex socket cap screws (key 18) through the spool can help to align the gasket with the spool.
2. Install the spool onto the housing, making sure that the side of the spool with three 1/4 NPT fittings is visible from the front of the device.
3. Replace the remaining hex socket cap screws (key 18); tighten to a torque of 4.5 N • m (40 lbf • in).

Pneumatic Interface and Gasket Removal

1. Follow the above instructions to remove the Spool Valve and Pneumatic Gasket
2. Open the 4310 and carefully unplug the two red pilot valves connectors, shown in figure 38, from the sensor board.

Figure 38. Pneumatic Interface



3. Remove the three hex socket cap screws (key 27) from the pneumatic interface (key 15).
4. Remove the pneumatic interface by pulling it straight out of the housing.
5. Carefully remove the housing gasket (key 14). It may be attached to the back of the pneumatic interface.
6. Remove the four O-rings (key 26).
7. Follow the procedure below to install a new pneumatic interface and gasket.

Pneumatic Interface and Gasket Installation

1. Install the four new o-rings (key 26) into the housing.
2. Install the new housing gasket (key 14), making sure it is completely seated into the housing.
3. Align the wire leads from the pilot valve into the appropriate openings in the housing and carefully slide the pneumatic interface into the housing until the two connectors can be plugged in.
4. Insert the pneumatic interface into the housing.
5. Install the three hex socket cap screws (key 27) and tighten to 1.13 N•m (10 lbf•in).
6. Close the 4310 cover and tighten the instrument cover screws to a torque of 5.6 to 6.7 N•m (50 to 60 lbf•in).
7. Follow the instructions on page 64 to install the spool valve and pneumatic gasket.

Filter Replacement

1. Remove the two screws holding the filter assembly (key 13) in place.
2. Remove the filter assembly from the housing (it is okay to twist the filter to aid in removal).
3. Insert the new filter into the housing, making sure that the holes line up with the screw holes in the housing.
4. Replace the two screws holding the filter assembly in place and tighten to 1.13 N•m (10 lbf•in).
5. Repeat the above steps for the second filter.

Parts

⚠ WARNING

Use only genuine Emerson replacement parts. Components that are not supplied by Emerson Process Management should not, under any circumstances, be used in any TopWorx instrument. Use of components not supplied by Emerson Process Management may void your warranty, might adversely affect the performance of the instrument and could cause personal injury or property damage.

Repair Kits

Note

Parts Kits are only available for the 4310 with on/off control.

Kit	Description	Part Number
1	Complete Repair Kit Kit contains Filter Assembly, qty. 2 (key 13); Housing Gasket (key 14); Pneumatic Interface (key 15); Pneumatic Gasket (key 16); Spool Valve (key 17); Hex Socket Cap Screw, qty. 4 (key 18); O-Ring, qty. 4 (key 26); Hex Socket Cap Screw, qty. 3 (key 27); and Vent Assembly, qty. 2 (key 59)	R4300X0RK12
2	Pilot Valve Repair Kit Kit contains key Housing Gasket (key 14); Pneumatic Interface (key 15); Pneumatic Gasket (key 16) Hex Socket Cap Screw, qty. 4 (key 18); O-Ring, qty. 4 (key 26); and Hex Socket Cap Screw, qty. 3 (key 27)	R4300X0PV12
3	Spool Valve Repair Kit Kit contains Pneumatic Gasket (key 16); Spool Valve (key 17); Hex Socket Cap Screw, qty. 4 (key 18); and Vent Assembly, qty. 2 (key 59)	R4300X0SV12
4	Soft Seal Kit Kit contains Housing Gasket (key 14); Pneumatic Gasket (key 16); and O-Ring, qty. 4 (key 26)	R4300X0SS12
5	Filter Repair Kit Kit contains Filter Assembly qty. 2 (key 13)	R4300X00F12

Replaceable Parts

Note

Contact your [Emerson Process Management sales office](#) for Part Ordering information.

Description

Standard Power Module
Extended Life Power Module

Mounting Kit

Magnet Assembly (typically included with Mounting Kit)



For additional information on the 4310 scan or click the QR code

TopWorx Global Support Offices:

North America
3300 Fern Valley Road
Louisville, Kentucky 40213 USA
+1 502 969 8000
info.topworx@emerson.com

Middle East
P.O. Box 17033
Jebel Ali Free Zone
Dubai 17033
United Arab Emirates
+9714 8118283
info.topworx@emerson.com

Asia-Pacific
1 Pandan Crescent
Singapore 128461
+65 6891 7550
info.topworx@emerson.com

Europe
Horsfield Way
Bredbury Industrial Estate
Stockport SK6 2SU
England
+44 0 161 406 5155
info.topworx@emerson.com

Africa
24 Angus Crescent
Longmeadow Business Estate East
Modderfontein
Gauteng RSA
+27 11 451 3700
info.topworx@emerson.com

Neither Emerson, Emerson Process Management, nor any of their affiliated entities assumes responsibility for the selection, use or maintenance of any product. Responsibility for proper selection, use, and maintenance of any product remains solely with the purchaser and end user.

TopWorx™ and Fisher are marks owned by one of the companies in the Emerson Process Management business unit of Emerson Electric Co. Emerson Process Management, Emerson, and the Emerson logo are trademarks and service marks of Emerson Electric Co. HART and WirelessHART are registered trademarks of FieldComm Group. All other marks are the property of their respective owners.

The contents of this publication are presented for informational purposes only, and while every effort has been made to ensure their accuracy, they are not to be construed as warranties or guarantees, express or implied, regarding the products or services described herein or their use or applicability. All sales are governed by our terms and conditions, which are available upon request. We reserve the right to modify or improve the designs or specifications of such products at any time without notice.

INMETRO Hazardous Area Approvals for TopWorx™ 4310 Wireless Position Monitor with On/Off Control Option

This supplement provides INMETRO Hazardous Area Approval information for the 4310 Wireless Position Monitor with On/Off Control Option instruction manual. Use this in conjunction with information provided in the 4310 Wireless Position Monitor with On/Off Control Option instruction manual (D103622X012).

National Institute of Metrology, Quality and Technology. INMETRO approval is accepted in Brazil.

Certain nameplates may carry more than one approval, and each approval may have unique installation/wiring requirements and/or conditions of “safe use”. These special instructions for “safe use” are in addition to, and may override, the standard installation procedures. Special instructions are listed by approval. Refer to the instruction manual for all other information regarding the 4310 wireless position monitor.

Note

This information supplements the nameplate markings affixed to the product.

Always refer to the nameplate itself to identify the appropriate certification.

WARNING

Failure to follow these conditions of “safe use” could result in personal injury or property damage from fire or explosion, and area re-classification.

Certification Number

IEx 13.0238X

Standards Used for Certification

ABNT NBR IEC 60079-0:2013

ABNT NBR IEC 60079-11:2013

Intrinsically Safe

Battery Sourced Power Module w/out Pneumatic Output

Ex ia IIC T3/T4/T5 Ga

Battery Sourced Power Module with Pneumatic Output

Ex ia IIC T4/T5/T6 Ga



External Power Option w/out Pneumatic Output

Ex ia IIC T5 Ga

External Power Option with Pneumatic Output

Ex ia IIC T5 Ga

Enclosure:

Type 4X, IP66W, IP67W

External Power Terminal J5: $U_i = 28\text{ V}$, $I_i = 100\text{ mA}$, $P_i = 1\text{ W}$, $C_i = 78\text{ nF}$, $L_i = 2.63\text{ mH}$ **HART Communication Terminals WP1/WP2:** $U_i = 6\text{ VDC}$, $I_i = 5\text{ mA}$, $P_i = 30\text{ mW}$, $C_i = 2.5\text{ nF}$, $L_i = 0\text{ mH}$ $U_o = 6\text{ VDC}$, $I_o = 14\text{ mA}$, $P_o = 84\text{ mW}$, $C_o = 39\text{ }\mu\text{F}$, $L_o = 150\text{ mH}$ **Temperature classification:****Battery Sourced Power Module w/out Pneumatic Output** $T_5 = -40^\circ\text{C} \leq T_{\text{amb}} \leq +40^\circ\text{C}$; $T_4 = -40^\circ\text{C} \leq T_{\text{amb}} \leq +75^\circ\text{C}$; $T_3 = -40^\circ\text{C} \leq T_{\text{amb}} \leq +85^\circ\text{C}$ **Battery Sourced Power Module with Pneumatic Output** $T_6 = -20^\circ\text{C} \leq T_{\text{amb}} \leq +31^\circ\text{C}$; $T_5 = -20^\circ\text{C} \leq T_{\text{amb}} \leq +46^\circ\text{C}$; $T_4 = -20^\circ\text{C} \leq T_{\text{amb}} \leq +50^\circ\text{C}$ **External Power Option w/out Pneumatic Output** $T_5 = -40^\circ\text{C} \leq T_{\text{amb}} \leq +80^\circ\text{C}$ **External Power Option with Pneumatic Output** $T_5 = -20^\circ\text{C} \leq T_{\text{amb}} \leq +50^\circ\text{C}$ **Special Conditions of Use****Equipment with a Battery Sourced Power Module:**

- The HART (WP1-WP2) connections can only be connected to intrinsically safe certified equipment and in accordance with the instructions of the manufacturer. This combination must be compatible regarding intrinsic safety rules.
- The equipment should not be subjected to mechanical impacts or friction.
- Products that are operated by battery can only use power module GE57654X012 or GE57655X012.
- The piezo valve shall be used for control of non-flammable medium only.

Equipment with External Power:

- The apparatus may be powered externally via external power module GE61615X012.

Neither Emerson, Emerson Process Management, nor any of their affiliated entities assumes responsibility for the selection, use or maintenance of any product. Responsibility for proper selection, use, and maintenance of any product remains solely with the purchaser and end user.

TopWorx is a mark owned by one of the companies in the Emerson Process Management business unit of Emerson Electric Co. Emerson Process Management, Emerson, and the Emerson logo are trademarks and service marks of Emerson Electric Co. All other marks are the property of their respective owners.

The contents of this publication are presented for informational purposes only, and while every effort has been made to ensure their accuracy, they are not to be construed as warranties or guarantees, express or implied, regarding the products or services described herein or their use or applicability. All sales are governed by our terms and conditions, which are available upon request. We reserve the right to modify or improve the designs or specifications of such products at any time without notice.

www.topworx.com

NEPSI Hazardous Area Approvals for TopWorx™ 4310 Wireless Position Monitor with On/Off Control Option

This supplement provides NEPSI Hazardous Area Approval information for the 4310 Wireless Position Monitor with On/Off Control Option. Use this in conjunction with information provided in the 4310 Wireless Position Monitor with On/Off Control Option instruction manual (D103622X012).

NEPSI—National Supervision and Inspection Centre for Explosion Protection and Safety of Instrumentation. NEPSI approval is accepted in China.

Certain nameplates may carry more than one approval, and each approval may have unique installation/wiring requirements and/or conditions of “safe use”. These special instructions for “safe use” are in addition to, and may override, the standard installation procedures. Special instructions are listed by approval. Refer to the instruction manual for all other information regarding the 4310 wireless position monitor.

Note

This information supplements the nameplate markings affixed to the product.

Always refer to the nameplate itself to identify the appropriate certification.

⚠ WARNING

Failure to follow these conditions of “safe use” could result in personal injury or property damage from fire or explosion, and area re-classification.

Standards Used for Certification

IEC 60079-0:2011	GB 3836.1-2010
IEC 60079-11:2011	GB 3836.4-2010
IEC 60079-26:2006	GB 3836.20-2010

Intrinsically Safe

Ex ia IIC T3/T4/T5 Ga (battery powered, without pneumatic output)

Ex ia IIC T4/T5/T6 Ga (battery powered, with pneumatic output)

Ex ia IIC T5 Ga (external powered, with or without pneumatic output)



Special Conditions for Safe Use

The suffix “X” placed after the certificate number indicates that this product is subject to special conditions for safe use, that is:

1. To avoid an ignition hazard due to mechanical impact or friction when the product is installed in zone 0.
2. The apparatus can only be powered with one of power supply model GE57654X012 or GE57655X012.
3. The piezo valve shall be used for control non-flammable medium only.
4. The apparatus may be powered externally via External Power module GE61615X012.

Conditions for Safe Use

1. The relationship between temperature class and ambient temperature range is shown as following:

Battery Powered, versions without pneumatic output

Temperature Class	T5	T4	T3
Ambient Temperature Range	-40°C ~ +40°C	-40°C ~ +75°C	-40°C ~ +85°C

Battery Powered, versions with pneumatic output

Temperature Class	T5	T4	T3
Ambient Temperature Range	-20°C ~ +31°C	-20°C ~ +46°C	-20°C ~ +50°C

External Powered, version without pneumatic output: -40°C ~ +80°C

External Powered, version with pneumatic output: -20°C ~ +50°C

2. Certified intrinsically safe handheld HART communication equipment can be connected to terminal WP1/WP2, its parameters are shown as following:

Ui = 6 V, Ii = 5 mA, Pi = 30 mW, Ci = 2.5 nF, Li ≈ 0
 Uo = 6 V, Io = 14 mA, Po = 84 mW, Co = 39 μF, Lo = 150 mH

- 2.1 External power terminal (J5) parameters:
 Ui=28 V, Ii=100 mA, Pi=1 W, Ci=78nF, Li=2.63 mH

3. The user shall not change the configuration in order to maintain/ensure the explosion protection performance of this product. Any change may impair safety.
4. For installation, use and maintenance of this product, the end user should observe the instruction manual and the following standards:

GB50257-1996: “Code for construction and acceptance of electric device for explosion atmospheres and fire hazard electrical equipment installation engineering”.

GB3836.13-1997 “Electrical apparatus for explosive gas atmospheres Part 13: Repair and overhaul for apparatus used in explosive gas atmospheres”.

GB3836.15-2000: “Electrical apparatus for explosive gas atmospheres Part 15: Electrical installation in hazardous area (other than mines)”.

GB3836.16-2006: “Electrical apparatus for explosive gas atmospheres Part 16: Inspection and maintenance of electrical installation (other than mines)”.

GB3836.18-2010: “Explosive atmospheres Part 18: Intrinsically safe system”.

Neither Emerson, Emerson Process Management, nor any of their affiliated entities assumes responsibility for the selection, use or maintenance of any product. Responsibility for proper selection, use, and maintenance of any product remains solely with the purchaser and end user.

TopWorx is a mark owned by one of the companies in the Emerson Process Management business unit of Emerson Electric Co. Emerson Process Management, Emerson, and the Emerson logo are trademarks and service marks of Emerson Electric Co. All other marks are the property of their respective owners.

The contents of this publication are presented for informational purposes only, and while every effort has been made to ensure their accuracy, they are not to be construed as warranties or guarantees, express or implied, regarding the products or services described herein or their use or applicability. All sales are governed by our terms and conditions, which are available upon request. We reserve the right to modify or improve the designs or specifications of such products at any time without notice.

www.topworx.com

