

Replacement Parts Sheet

MCK-1153
March 2010

Types C403, C404, C413, & C414

Type C403, C404, C413 & C414 3-Inch Single and Double Flanged Internal Valve Parts Sheet

Parts List

Disc Guide Kit for C403: T13201T0012
Includes key numbers 13, 39 (2 required), 40 (2 required), 47, and Loctite Compound

Replacement Parts Kit--Packing Assembly
Includes Key Numbers 7, 11, 15B, 15F, 15G, 15H, 15K, 19, 23, 43, 44, 54 and both upper gaskets (valve to tank) for pre 1990 and post 1990 constructions
C403 and C413 RC40324T012
C404 and C414 RC40424T012

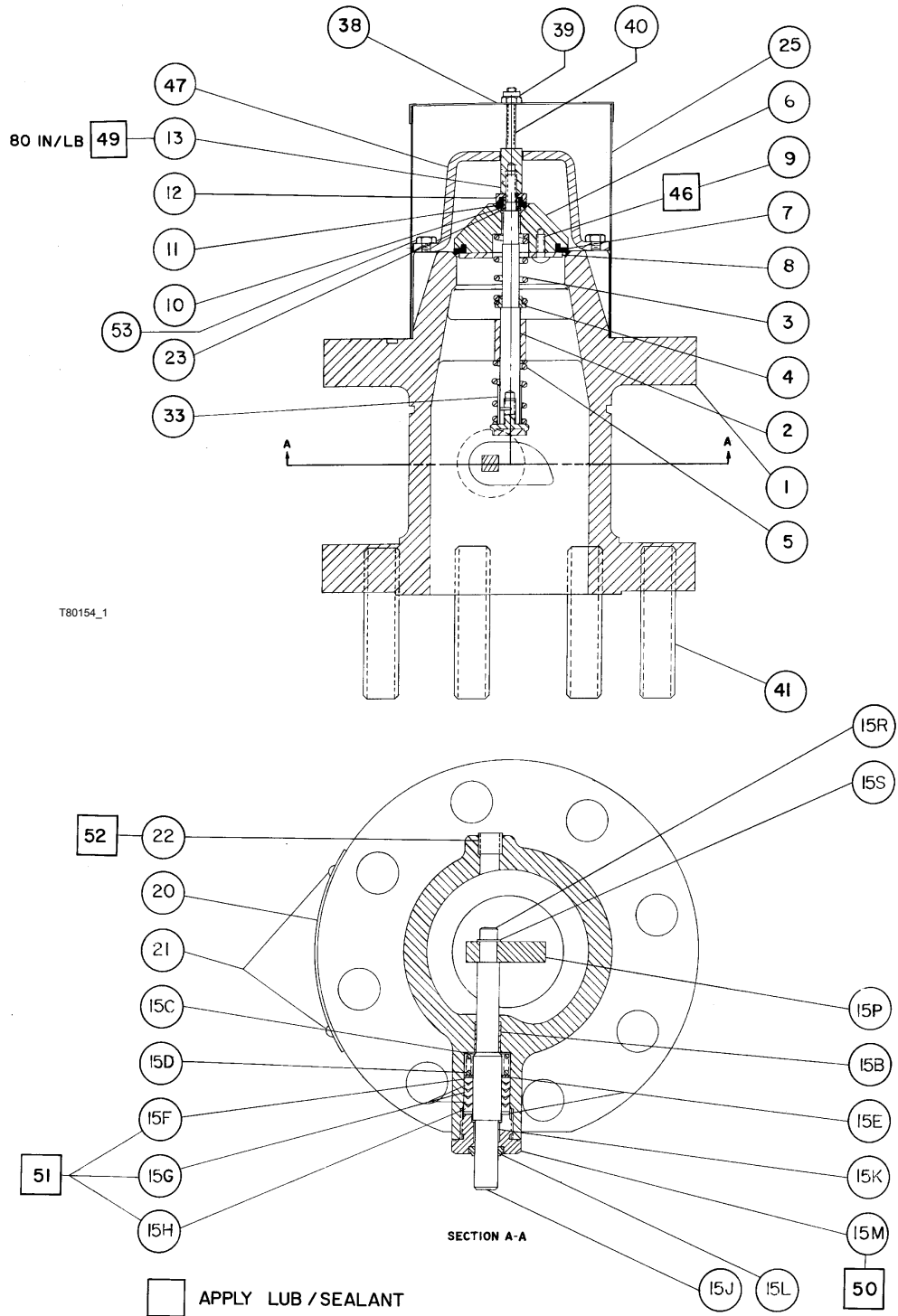
Key	Description	Part Number
1	Body C403 and C413 C404 and C414	T8013922012 T8015322012
2	Stem Assembly C403 and C413 C404 and C414	T11887000A2 T12766T00A2
2A	Stem C403 and C413 C404 and C414	T1177235032 T12763T0012
2B	Follower Assembly Plug Holder Wear Plug	T11880000A2 T1187135132 T1187201012
2C	Groove Pin	1J1560T0012
3	Excess Flow Spring Closing Flow -- GPM Propane (Yellow) 150 (Orange) 200 (Pink) 250 (Black) 400 (Cadmium) 500	T1192537022 T1192437022 T1215237022 T1177337022 T1226237022
4	Spring Seat C403 and C413 C404 and C414	T1153624102 T12764T0012
5	Closing Spring	T1153737022
6	Disc Holder	T2042924102
7*	Main Disc	T1177403032
8	Disc Retainer	T1177525072
9	Screw (3 required)	1A954828992
10	Disc Retainer	T1154224102
11*	Bleed Disc	T11543T0012
12	Disc Holder	T1154424102
13	Nut C403 and C413 C404 and C414	T13200T0012 T12765T0012
15B	Liner Bushing C403 and C413 C404 and C414	T1154506992 T12762T0012
15C	Washer	T1154625072

Key	Description	Part Number
15D	Spring	T1154737022
15E	Washer (2 required)	T1154825072
15F*	Male Adaptor	T1154901012
15G*	Packing Ring (3 required)	T1155001012
15H*	Female Adaptor	1H941601012
15J	Stub Shaft	T2043135072
15K*	Liner Bushing	T1155106992
15L	Rod Wiper	T1155206992
15M	Bonnet	T1155324102
15P	Cam	T1155521992
15R	Cap Screw C403 and C413 C404 and C414	T12576T0012 1B848024052 1C225628982
15S	Washer	T1155919312
18	Lever	1H837128982
19*	Cotter Pin	Not Orderable
20	Nameplate	1A368228982
21	Drive Screw (2 required)	T13718T0012
22	Pipe Plug (C403 and C413 only)	T1188228982
23*	Washer	T12317T0012
25	Strainer	T12775T0012
29	Cap Screw (C404 and C414 only) (4 required)	1J157443992
30	Fusible Link	T1240838072
33	Travel Stop (C403 and C413 only)	T12767T0012
35	Bushing (C404 and C414 only)	T40298T0012
37	Cage	T12318T0012
38	Strainer Cap C403 C404	T13473T0012 1J719228982
39	Nut (C403 Only) (2 required)	T1127235132
40	Bolt C403 (2 required) C404 (2 required) C413 (2 required)	T12776T0012 1D617032992
41	Stud Bolt C403 and C413 (16 required) C404 and C414 (8 required)	1N946228982 1P790832982
42	Nut (16 required)	1A368124112
43	Gasket, Upper (Valve to Tank) Post 1990 Construction Pre 1990 Construction	T13603T0012 1P877799152
44	Gasket, Lower (Valve to Pump) C403 and C413 C404 and C414	T1056138992 1P877699152
45	Lubricant	Dow Corning 111
46	Seal 5	Loctite 242
47	Guide Bracket (C403 and C413 Only)	T20798T0012
49	Seal 11	Loctite 277
50	Lube 5	Never Seize
51	Lube 9	Magnalube G
52	Seal 12	PipeThread Tape
53	Cap Screw (C403 and C413 Only) (2 required)	T12776T0012
54	Instruction Manual	D450034T012

* Recommended Spare Part



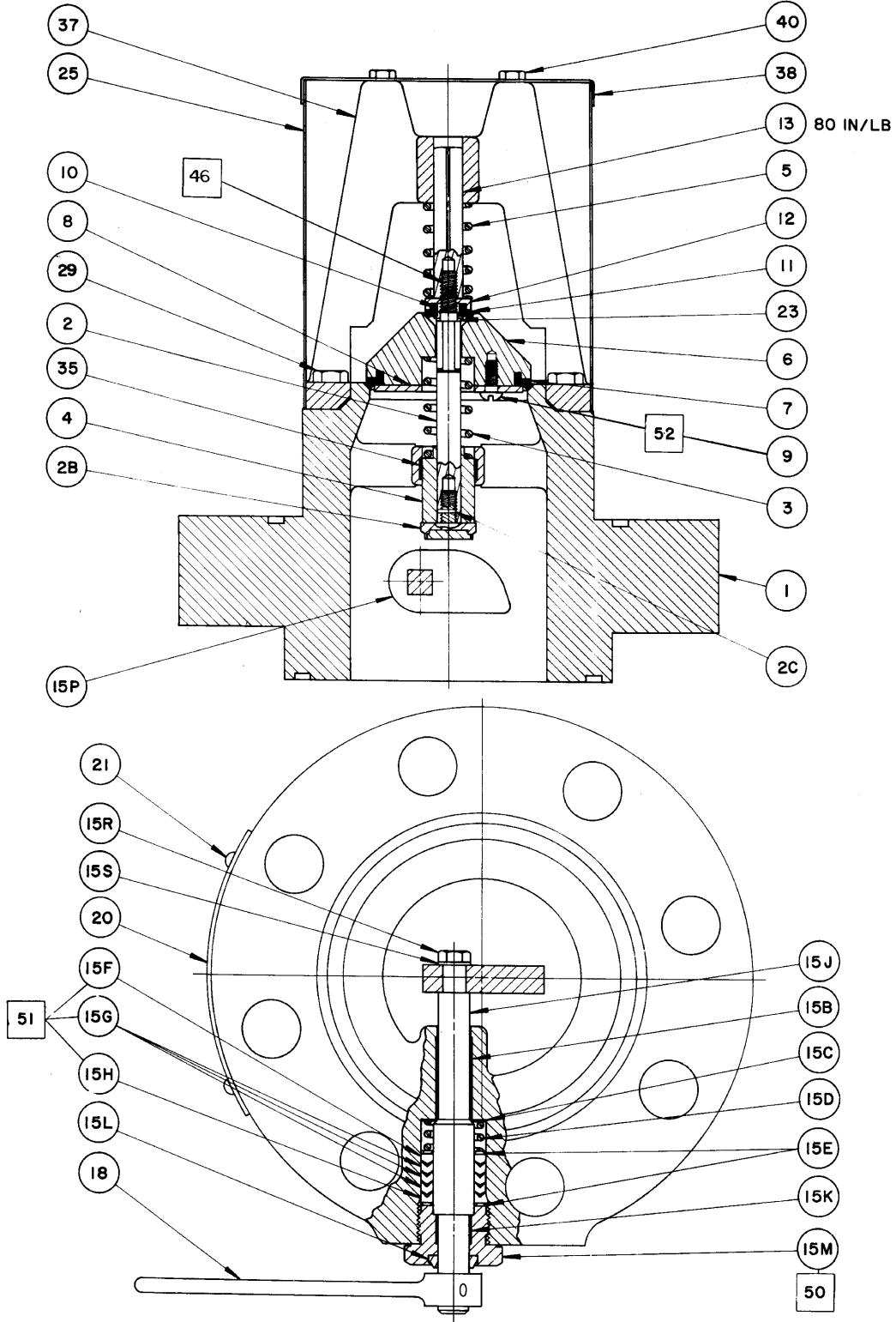
Types C403, C404, C413, & C414



KEYS 18, 19, 24, 30, 42, 43, 44, 45 NOT SHOWN

Figure 1. C403-24 and C413-24 Assembly

Types C403, C404, C413, & C414



T40326

Figure 2. C404-24 and C414-24 Assembly

Types C403, C404, C413, & C414

LP-Gas Equipment

Emerson Process Management Regulator Technologies, Inc.

USA - Headquarters
McKinney, Texas 75069-1872 USA
Telephone: 1 (800) 558-5853
Telephone: 1 (972) 548-3574

For further information visit www.fisherregulators.com/lp

The Emerson logo is a trademark and service mark of Emerson Electric Co. All other marks are the property of their prospective owners. Fisher is a mark owned by Fisher Controls, Inc., a business of Emerson Process Management.

The contents of this publication are presented for informational purposes only, and while every effort has been made to ensure their accuracy, they are not to be construed as warranties or guarantees, express or implied, regarding the products or services described herein or their use or applicability. We reserve the right to modify or improve the designs or specifications of such products at any time without notice.

Emerson Process Management does not assume responsibility for the selection, use or maintenance of any product. Responsibility for proper selection, use and maintenance of any Emerson Process Management product remains solely with the purchaser.

